



# KENTUCKY INJURY INDICATORS

## 2004-2008



INTEGRATED CORE INJURY PREVENTION AND CONTROL (ICIPC) PROJECT  
COOPERATIVE AGREEMENT NO: 3U17CE424761-05S1  
KENTUCKY INJURY PREVENTION AND RESEARCH CENTER  
DECEMBER 2010



## **ACKNOWLEDGEMENTS**

This report is funded through Integrated Core Injury Prevention and Control Project (ICIPC) by National Center on Injury Prevention and Control (NCIPC), Centers for Disease Control and Prevention (CDC), Agreement No 3U17CE424761-05S1.

### **Prepared by**

**Svetla Slavova**

**Michael Singleton**

### **Released by**

Kentucky Injury Prevention and Research Center (KIPRC)  
University of Kentucky College of Public Health  
333 Waller Avenue, Suite 242  
Lexington, Kentucky 40504

### **Director**

**Terry Bunn**

For more information contact

Svetla Slavova  
Phone: (859) 323-7873  
E-mail: [ssslav2@email.uky.edu](mailto:ssslav2@email.uky.edu)

or

Michael Singleton  
Phone: (859) 257-5809  
E-mail: [msingle@email.uky.edu](mailto:msingle@email.uky.edu)

## TABLE OF CONTENTS

Executive Summary .....	v
Data Sources and Methods .....	vi
<b>Leading Causes of Injury by Age Group</b>	
Fatalities .....	1
Hospitalizations .....	2
<b>Injury Indicators</b>	
Unintentional Drowning Fatalities .....	3
Unintentional Near Drowning Hospitalizations .....	5
Unintentional Falls Fatalities .....	7
Unintentional Falls Hospitalizations .....	9
Unintentional Fire-Burns Fatalities .....	11
Unintentional Fire-Burns Hospitalizations .....	13
Interpersonal Violence- Homicide .....	15
Interpersonal Violence-Assault Hospitalizations .....	17
Motor Vehicle Traffic Crashes Fatalities .....	19
Motor Vehicle Traffic Crashes Hospitalizations .....	21
Natural/Environmental Related Fatalities .....	23
Natural/Environmental Related Hospitalizations .....	25
Motor Vehicle Nontraffic Fatalities .....	27
Motor Vehicle Nontraffic Hospitalizations .....	29
Overexertion Hospitalizations .....	31
Unintentional Poisoning Fatalities .....	33
Unintentional Poisoning Hospitalizations .....	35
Self-Directed Violence – Suicide .....	37
Self-Directed Violence – Suicide Attempt Hospitalizations .....	39
Unintentional Suffocation Fatalities .....	41
Unintentional Suffocation Hospitalizations .....	43

## **Executive Summary**

### ***Fatalities:***

The annual average number of fatal injuries to Kentucky residents within the state border between 2004 and 2008 was 2,950, approximately 8 per day. Most of the fatal injuries were unintentional (72%). Suicides outnumbered homicides more than 2.8 to 1 (2,831 suicides to 993 homicides). Males accounted for the majority of both homicides (724 or 73%) and suicides (2,312 or 82%). Most homicides (64%) happened to persons between the ages of 15 and 44. The majority of suicides occurred between the ages of 35 and 64 (57.6%).

The leading causes of fatal injuries were motor vehicle traffic crashes (3,740 deaths\*, 25% of all injury fatalities), poisoning (3,473 or 24%) and firearms (2,627 or 18%). The majority of deaths due to motor vehicle crashes (100%) and poisoning (82%) were unintentional, whereas the majority of fatal firearm injuries were suicides (70%).

Fatal motor vehicle traffic crashes (MVC) were most frequent among persons aged 15 to 44 (2,159 or 58%). Males accounted for 2,551 (68%) MVC fatalities. The age groups at highest risk in terms of age-adjusted fatalities rates were 75 and older and 15 to 24 years.

Fatalities in this report include only deaths that occurred within the state border.

### ***Hospitalizations:***

The annual average number of hospitalizations, with a principal diagnosis of injury, involving Kentucky residents between 2004 and 2008 was 24,846, approximately 68 per day. For about 19,866 of these discharges, the mechanism and manner of injury was specified. As with fatalities, most of the injury hospitalizations were unintentional (84%). Self-inflicted injuries outnumbered assaults 3.6 to 1 (10,534 to 2,927). Most self-inflicted injuries were poisonings (93%). The leading causes of injury hospitalizations were falls (46%), poisoning (18%), and MVC's (17%). These three causes together accounted for 4 out of every 5 injury hospitalizations.

Hospitalizations due to unintentional falls were most frequent among persons aged 65 and older (71%). Females accounted for 31,000 cases (68%). Persons 85 and older had greatly increased risk in terms of age-adjusted rates.

Hospitalizations due to MVC's were most frequent among young drivers aged 15 to 24, and they had the highest rates as well. Males accounted for 59% of MVC inpatients (9,818 of 16,513). Older drivers also showed high rates, but accounted for a low percentage of total cases.

\* This number is based on Kentucky state death certificates, and will not match with the counts from state police crash data, which include out-of-state residents killed in crashes in KY and do not include KY residents killed in out-of-state crashes.

## **Data Sources and Methods**

### ***Data sources:***

Four data sources were used:

1. For population: National Center for Health Statistics (NCHS), National Vital Statistics System, bridged-race vintage postcensal population estimates for July 1, 2004 - July 1, 2008, by year, county, single-year of age, bridged-race, Hispanic origin, and sex.
2. For Fatalities: Kentucky Department for Public Health, Vital Statistics Branch, State Death Certificate Database, 2004-2008.
3. For Hospitalizations: Kentucky Cabinet for Health and Family Services, Office of Health Policy, State Hospital Discharge Database, 2004-2008.
4. For U.S. fatality rates: CDC Web-based Injury Statistics and Reporting System. Data for 2008 were not available at the time this report was created.

### ***Methods:***

#### ***Case Definition:***

##### **Injury Hospitalizations**

The definitions for hospitalized injury used in this report correspond to the CDC's "State Injury Indicators: Instruction for Preparing 2004 Data." Specifically, case selection is limited to discharges of Kentucky residents from nonfederal, acute care, or inpatient facilities. Readmissions, transfers, and deaths occurring in the hospital are included.

An injury subset was created by selecting discharges having a principal diagnosis code in the following ranges: 800–909.2, 909.4, 909.9, 910–994.9, 995.5–995.59, 995.80–995.85.

##### **Injury Fatalities**

Injury fatalities included in this report consider Kentucky residents who died inside Kentucky's borders only. The underlying cause of death field in the Kentucky Death Certificate Data is used to identify the mechanisms and manners of fatal injuries.

#### ***Calculation of Rates***

Two types of rates were used in the report. Age specific rates from 2004 to 2008 were calculated by dividing the mean quantity for a given age group over the five years by the number of Kentucky residents in that age group in 2006, and multiplying by 100,000. Age adjusted rates were adjusted to the year 2000 standard population.

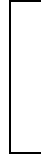
#### ***Abbreviations***

ADD:	Area Development District
HSPT:	Hospitalizations
MV Traffic:	Motor Vehicle Traffic
MV Nontraffic:	Motor Vehicle Nontraffic
Natural/Envior:	Natural/Environmental Related
NEC:	Not Elsewhere Classified
YPLL:	Years of Potential Life Lost

### Leading mechanisms of injury-related death within state border of KY residents by age group (2004-2008)

Age group													
Rank	<1	1-4	5-14	15-24	25-34	35-44	45-54	55-64	65-74	75-84	85+	Total	
1	Suffocation	MV Traffic	MV Traffic	MV Traffic	MV Traffic	Poisoning	Poisoning	MV Traffic	MV Traffic	Fall	Not Spec	MV Traffic	
2	Fire/Burns	Fire/Burns	MV Nontraffic	Poisoning	Poisoning	MV Traffic	MV Traffic	Firearm	Firearm	Not Spec	Fall	Poisoning	
3	MV Traffic	Drowning	Fire/Burns	Firearm	Firearm	Firearm	Firearm	Poisoning	Fall	MV Traffic	Suffocation	Firearm	
4	Not Spec	Not Spec	Drowning	Firearm	Firearm	Firearm	Poisoning	Fall	Not Spec	Firearm	MV Traffic	Fall	
5	Other Spec	Suffocation	Suffocation	Suffocation	Suffocation	Suffocation	Firearm	Poisoning	Suffocation	Suffocation	Firearm	Not Spec	
6	Suffocation	Other Spec	Not Spec	Drowning	Poisoning	Poisoning	Suffocation	Fire/Burns	Poisoning	Fire/Burns	Poisoning	Firearm	
7		Non Traffic	Firearm	MV Nontraffic	Poisoning	Poisoning	Fall	Suffocation	Fire/Burns	Poisoning	Fire/Burns	Suffocation	
8		6	8	49	57	81	82	42	38	35	17	593	
9			Suffocation	Poisoning	MV Nontraffic	MV Nontraffic	Poisoning	Firearm	MV Nontraffic	Other Spec	Other Spec	Suffocation	
10			Poisoning	Suffocation	Suffocation	Fire/Burns	Fire/Burns	Not Spec	Poisoning	Natural/Envir	Natural/Envir	Poisoning	
			6	21	33	44	63	41	18	16	12	365	
		Firearm	Firearm	Cut/Pierce	Drowning	Fall	MV Nontraffic	MV Nontraffic	Firearm	MV Nontraffic	MV Nontraffic	Fire/Burns	
		5	5	19	32	41	50	38	17	14	6	341	

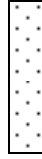
#### Legend:



Unintentional



Homicide



Undetermined

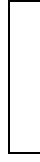


Suicide

# Leading mechanisms of injury-related discharges of KY residents from acute-care hospitals by age group (2004-2008)

	Age group												
Rank	<1	1-4	5-14	15-24	25-34	35-44	45-54	55-64	65-74	75-84	85+	Total	
1	Falls 138	Falls 338	Falls 837	MV Traffic 3,912	MV Traffic 2,798	MV Traffic 2,677	Falls 3,539	Falls 4,763	Falls 7,416	Falls 13,388	Falls 11,243	Falls 45,710	
2	Fire/Burns 38	Poisoning 232	MV Nontraffic 672	Poisoning 1,959	Poisoning 2,346	Poisoning 2,639	MV Traffic 2,446	MV Traffic 1,607	MV Traffic 1,039	MV Traffic 866	MV Traffic 290	MV Traffic 16,513	
3	MV Traffic 31	Fire/Burns 187	MV Traffic 666	MV Nontraffic 847	Falls 1,251	Falls 1,970	Poisoning 1,840	Poisoning 663	Poisoning 475	Poisoning 401	Poisoning 149	Poisoning 9,755	
4	Poisoning 25	MV Traffic 181	Struck 228	Falls 827	Poisoning 895	Poisoning 960	Poisoning 1,099	Poisoning 574	MV Nontraffic 207	Not Spec 213	Not Spec 124	Poisoning 5,590	
5	Other Spec 21	Natural/Envir 86	Poisoning 164	Poisoning 614	MV Nontraffic 571	MV Nontraffic 689	MV Nontraffic 603	MV Nontraffic 368	Other Spec 154	Other Spec 165	Other Spec 98	MV Nontraffic 4,176	
6	Not Spec 18	MV Nontraffic 67	Natural/Envir 133	Poisoning 455	Poisoning 558	Poisoning 597	Poisoning 518	Poisoning 238	Poisoning 151	Overexertion 149	Struck 77	Poisoning 2,558	
7	Struck 18	Other Spec 57	Fire/Burns 130	Struck 329	Struck 249	Natural/Envir 266	Natural/Envir 286	Struck 197	Overexertion 150	Struck 123	Overexertion 72	Struck 1,916	
8	Not Spec 16	Struck 49	Other Spec 128	Firearm 229	Struck 239	Struck 258	Struck 265	Natural/Envir 196	Not Spec. 145	Natural/Envir 118	Natural/Envir 60	Other Spec 1,644	
9	Not Spec 15	Suffocation 29	Poisoning 77	Struck 228	Other Spec 237	Struck 247	Other Spec 235	Other Spec 166	Struck 133	MV Nontraffic 108	MV Nontraffic 43	Natural/Envir 1,635	
10	Suffocation 10	Cut/Pierce 27	Cut/Pierce 63	Other Spec 177	Natural/Envir 232	Fire/Burns 244	Fire/Burns 231	Fire/Burns 154	Natural/Envir 119	Poisoning 86	Fire/Burns 21	Fire/Burns 1,556	

## Legend:



Unintentional



Assault



Undetermined



Self inflict



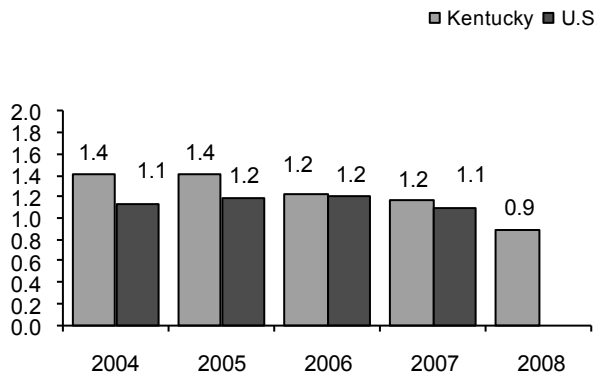
# Unintentional Drowning



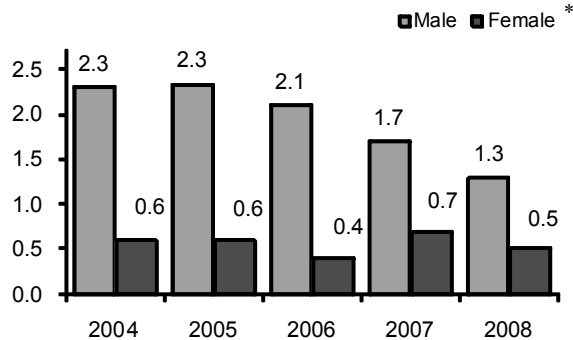
**Goals and Objectives:** According to the Mid-Decade Review of Healthy Kentuckians 2010, the objective is to reduce unintentional drowning to no more than 1.1 per 100,000 residents.

**Definition of Unintentional Drowning:** ICD10-code: W65-W74, V90, V92

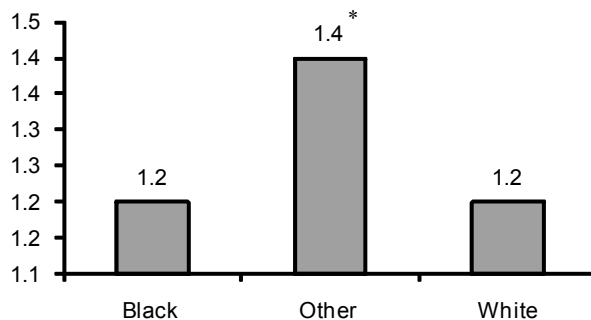
**Age adjusted drowning rate, KY vs US**



**Age adjusted drowning rate by sex, KY**



**Age adjusted drowning rate by race, KY, 2004-2008**



**Number of drownings, KY**

Year 2004	58
Year 2005	59
Year 2006	51
Year 2007	48
Year 2008	38

**Number of drownings by sex, KY**

	Male	Female
Year 2004	45	13
Year 2005	47	12
Year 2006	43	8
Year 2007	34	14
Year 2008	28	10

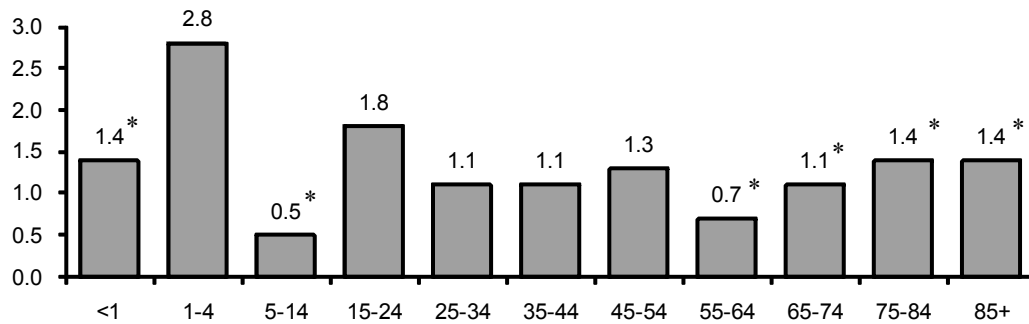
**Number of drownings by race, KY**

	White	Black	Other
Non Hispanic			
Year 2004	46	8	1
Year 2005	53	5	1
Year 2006	48	3	0
Year 2007	42	3	1
Year 2008	31	1	0
Hispanic			
Year 2004	3	0	0
Year 2005	0	0	0
Year 2006	0	0	0
Year 2007	1	0	1
Year 2008	6	0	0

**Total YPLL due to drownings**

Year 2004	2,445
Year 2005	2,374
Year 2006	2,074
Year 2007	1,872
Year 2008	1,592

### Age specific drowning rate. 2004-2008



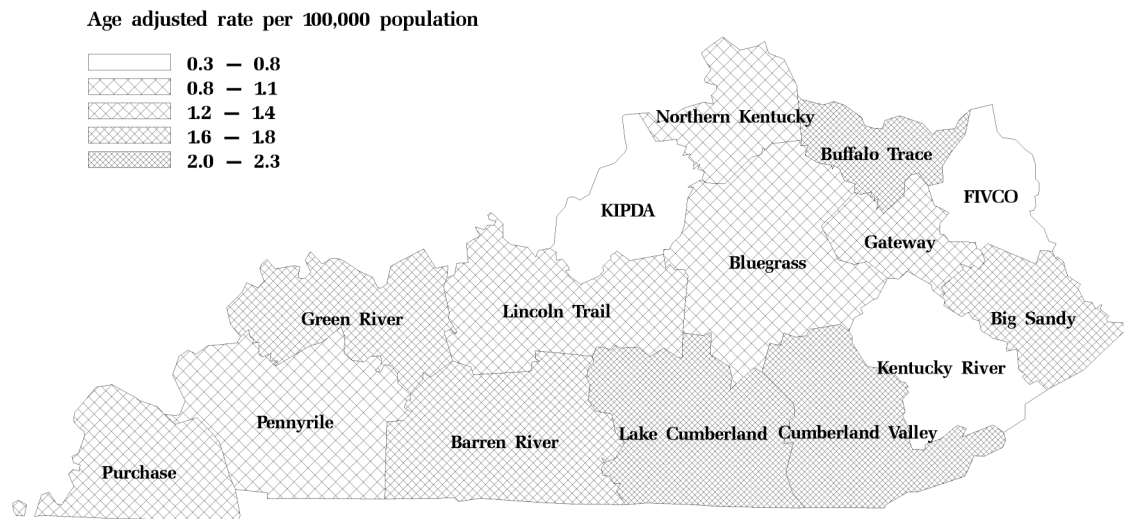
### Number of drownings by age group (2004-2008)

	<1	1-4	5-14	15-24	25-34	35-44	45-54	55-64	65-74	75-84	85+
2004	2	7	3	13	8	6	9	3	4	1	2
2005	1	9	4	8	4	10	9	8	3	2	1
2006	0	7	1	10	10	6	8	1	3	5	0
2007	0	6	1	10	5	10	7	2	2	4	1
2008	1	2	0	9	5	1	6	2	4	1	1

### Detailed breakdown of external cause (2004-2008)

	Frequency	Percent
Unspecified drowning	78	30.71
Drowning in natural water	86	33.86
Drowning following fall into natural water	33	12.99
Drowning while in swimming pool	14	5.51
Drowning while in bath tub	14	5.51
Other	29	11.42

### Drowning fatality rate by ADD for Kentucky residents, 2004–08



\* Rates are based on cases less than 20.

# Unintentional Near Drowning: Hospitalizations



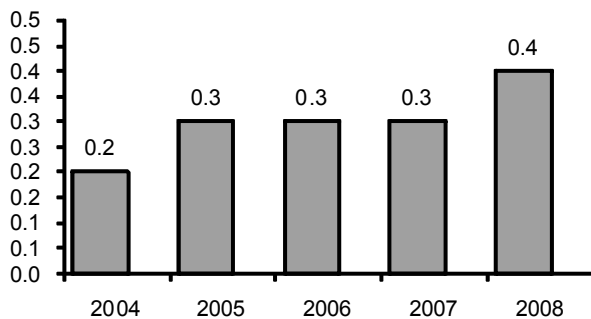
## Goals and Objectives:

There is no specified objective to reduce unintentional near-drowning according to the Mid-Decade Review of Healthy Kentuckians 2010.

## Definition of Unintentional Near Drowning:

E-code: 830, 832, 910 or Diagnosis code: 9941

Age adjusted near drowning hspt rate, KY \*



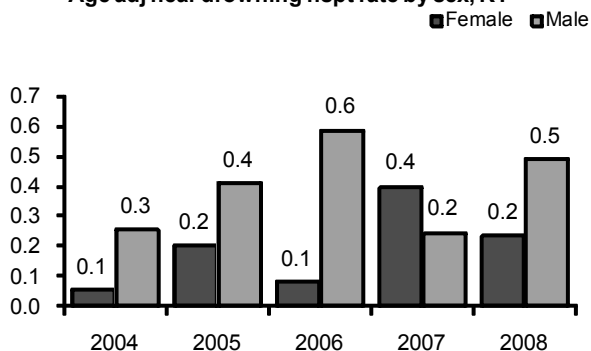
Number of hospitalizations, KY

Year 2004	6
Year 2005	12
Year 2006	14
Year 2007	13
Year 2008	15

Number of hospitalizations by sex, KY

	Male	Female
Year 2004	5	***
Year 2005	8	***
Year 2006	12	***
Year 2007	5	8
Year 2008	10	5

Age adj near drowning hspt rate by sex, KY \*



Hospitalizations charges

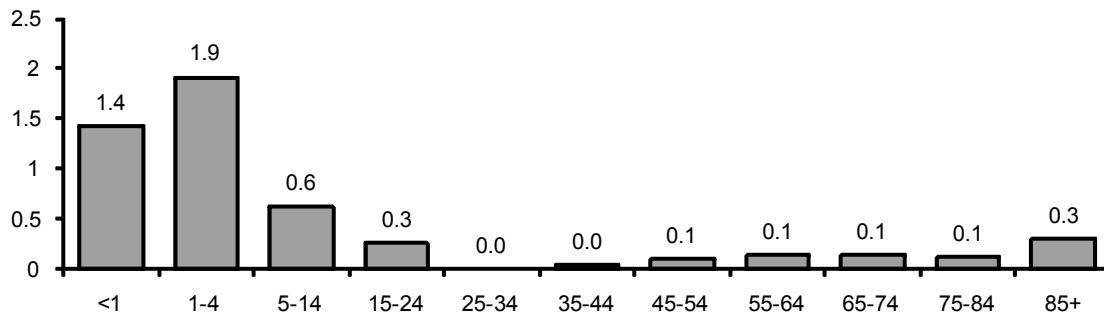
	Total	Per Dis.
Year 2004	\$88,753	\$14,792
Year 2005	\$302,629	\$25,219
Year 2006	\$297,816	\$21,273
Year 2007	\$267,154	\$20,550
Year 2008	\$639,724	\$42,648

Length of stay (days)

	Total	Per Dis.
Year 2004	10	1.7
Year 2005	39	3.3
Year 2006	93	6.6
Year 2007	47	3.6
Year 2008	80	5.3

Breakdown by top discharge status ( 2004-2008 )		
	Freq	Percent
Routine discharge	43	71.67
Expired/did not recover	11	18.33
Skilled nursing facility	3	5.00
Other	3	5.00

**Age specific near drowning hspt rate. 2004-2008\***

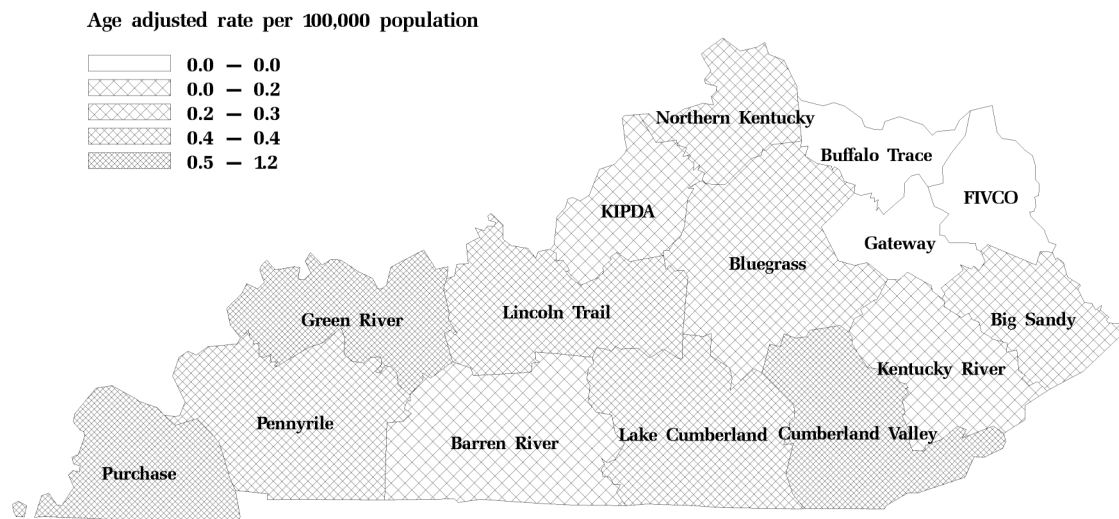


Number of near drowning hospitalizations by age group (2004- 2008)											
	<1	1-4	5-14	15-24	25-34	35-44	45-54	55-64	65-74	75-84	85+
2004	0	***	***	0	0	0	0	0	0	0	0
2005	***	***	6	0	0	***	0	***	0	0	0
2006	0	7	***	***	0	0	0	***	0	0	***
2007	***	***	***	***	0	0	***	0	***	0	0
2008	***	***	***	***	0	0	***	***	***	***	0

**Detailed breakdown of external cause (2004-2008)**

	Frequency	Percent
Drowning in quenching tank, swimming pool	27	47.37
Drowning while engaged in other sports without diving equipment	6	10.53
Drowning in bathtub	6	10.63
Drowning while swimming or diving for purposes other than recreation or sport	7	12.28
Other	11	19.30

**Near drowning hospitalization rate by ADD for KY residents, 2004-08**



\* Rates are based on cases less than 20. \*\*\* All cells less than 5 are suppressed.

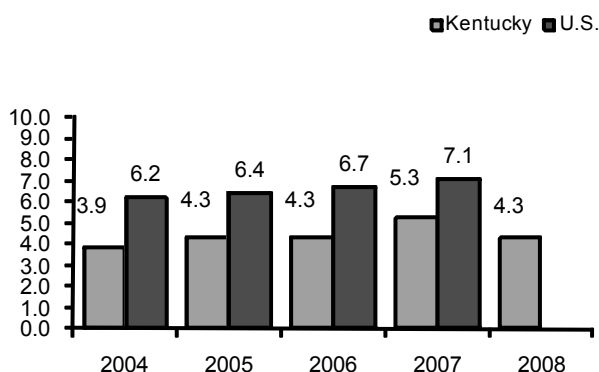
# Unintentional Falls: Fatalities



**Goals and Objectives:** According to the Mid-Decade Review of Healthy Kentuckians 2010, the objective is to reduce death from falls to no more than 3.7 per 100,000 residents.

**Definition of Unintentional Fatal Falls:** ICD10-code: W00-W19

**Age adj falls fatality rate, KY vs U.S.**



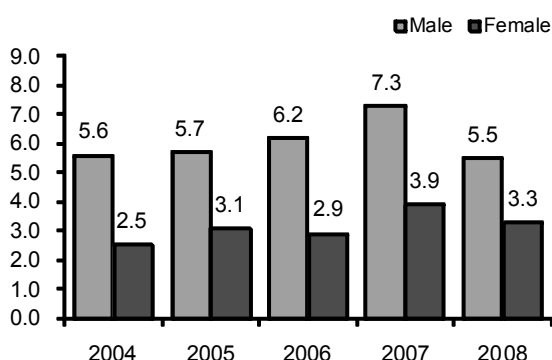
**Number of falls fatalities, KY**

Year 2004	161
Year 2005	180
Year 2006	187
Year 2007	236
Year 2008	196

**Number of falls fatalities by sex, KY**

	Male	Female
Year 2004	96	65
Year 2005	100	80
Year 2006	109	78
Year 2007	130	106
Year 2008	102	94

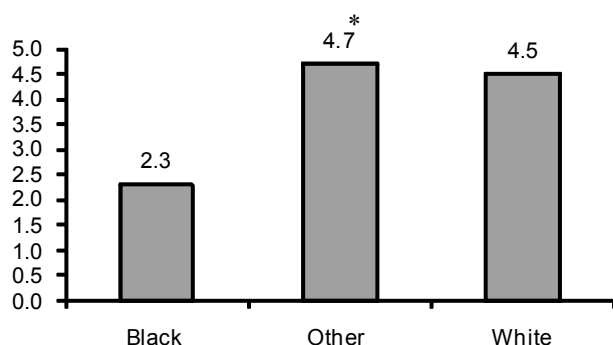
**Age adjusted falls fatality rate, KY**



**Number of falls fatalities by race, KY**

	White	Black	Other
<b>Non Hispanic</b>			
Year 2004	157	3	1
Year 2005	173	5	0
Year 2006	176	8	1
Year 2007	222	9	1
Year 2008	187	3	3
<b>Hispanic</b>			
Year 2004	0	0	0
Year 2005	2	0	0
Year 2006	2	0	0
Year 2007	4	0	0
Year 2008	2	1	0

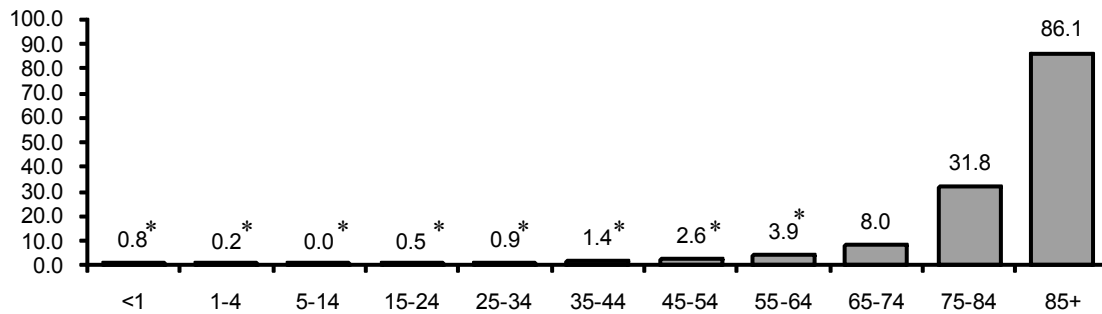
**Age adjusted falls fatality rate by race, KY, 2004-2008**



**Total YPLL due to falls**

Year 2004	1,547
Year 2005	1,471
Year 2006	1,457
Year 2007	1,696
Year 2008	1,309

### Age specific falls fatality rate. 2004-2008



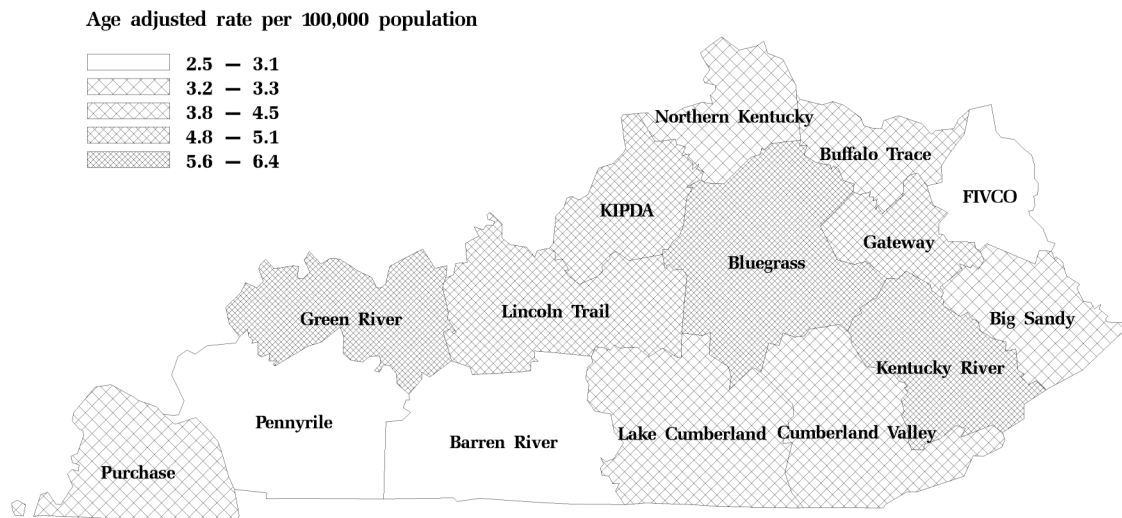
### Number of falls fatalities by age group (2004-2008)

	<1	1-4	5-14	15-24	25-34	35-44	45-54	55-64	65-74	75-84	85+
2004	0	1	1	2	3	10	23	11	18	45	47
2005	0	1	0	4	1	10	16	22	19	54	53
2006	0	0	0	3	5	7	16	20	22	57	57
2007	0	0	0	3	9	8	16	17	38	72	73
2008	0	0	0	2	7	6	11	22	18	61	69

### Detailed breakdown of external cause (2004-2008)

	Frequency	Percent
Unspecified falls	492	51.25
Other falls on same level	170	17.71
Falls on and from stairs / steps	100	10.42
Other falls from one level to another (bed, chair, building etc.)	54	5.63
Other	144	15.00

### Falls fatality rate by ADD for Kentucky residents, 2004-08



\* Rates are based on cases less than 20.

# Unintentional Falls: Hospitalizations



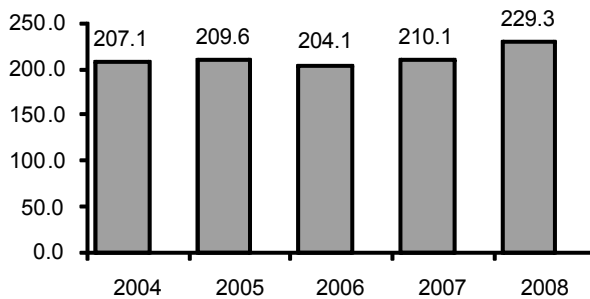
## Goals and Objectives:

There is no specified objective to reduce unintentional falls related hospitalizations according to the Mid-Decade Review of Healthy Kentuckians 2010.

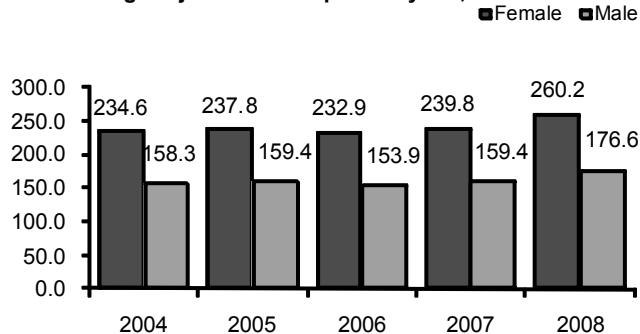
## Definition of Unintentional Falls Related Hospitalizations:

E-code: 880, 881, 882, 883, 884, 885, 886, 888

Age adjusted falls hspt rate by year, KY



Age adjusted falls hspt rate by sex, KY



Number of hospitalizations, KY

Year 2004	8,492
Year 2005	8,705
Year 2006	8,842
Year 2007	9,302
Year 2008	10,374

Number of hospitalizations by sex, KY

	Male	Female
Year 2004	2,744	5,748
Year 2005	2,799	5,906
Year 2006	2,813	6,029
Year 2007	2,990	6,312
Year 2008	3,382	6,992

Hospitalizations charges

	Total	Per Dis.
Year 2004	\$157,350,002	\$18,529
Year 2005	\$175,144,211	\$20,127
Year 2006	\$200,861,075	\$22,717
Year 2007	\$230,158,004	\$24,743
Year 2008	\$281,727,737	\$27,162

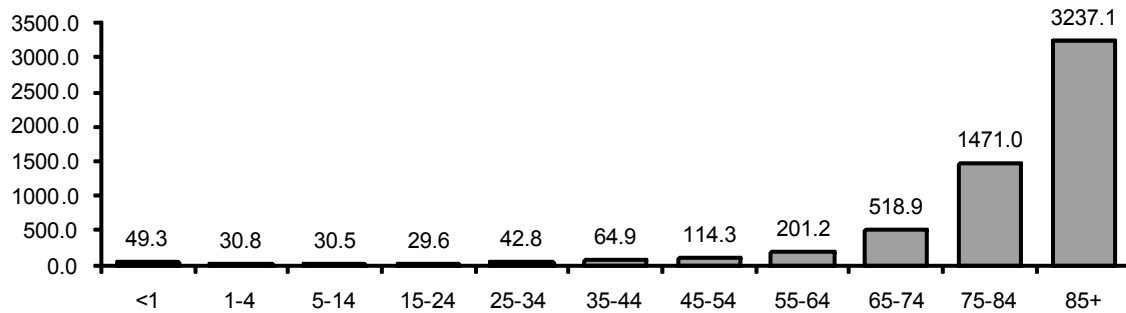
Length of stay (days)

	Total	Per Dis.
Year 2004	42,527	5.01
Year 2005	43,247	4.97
Year 2006	44,410	5.02
Year 2007	47,397	5.10
Year 2008	53,025	5.11

Breakdown by top discharge status ( 2004-2008 )

	Freq	Percent
Routine discharge	14,108	30.86
Skilled nursing facility	15,892	34.77
Home health	4,714	10.31
Inpatient-other type facility	389	0.85
Inpatient-other short-term hospital	1,039	2.27
Expired/did not recover	1,167	2.55
Transfer to rehab facility	5,827	12.75
Transfer w/in institution to Medicare swing bed	1,419	3.10
Other	1,155	2.53

### Age specific falls hspt rate. 2004-2008



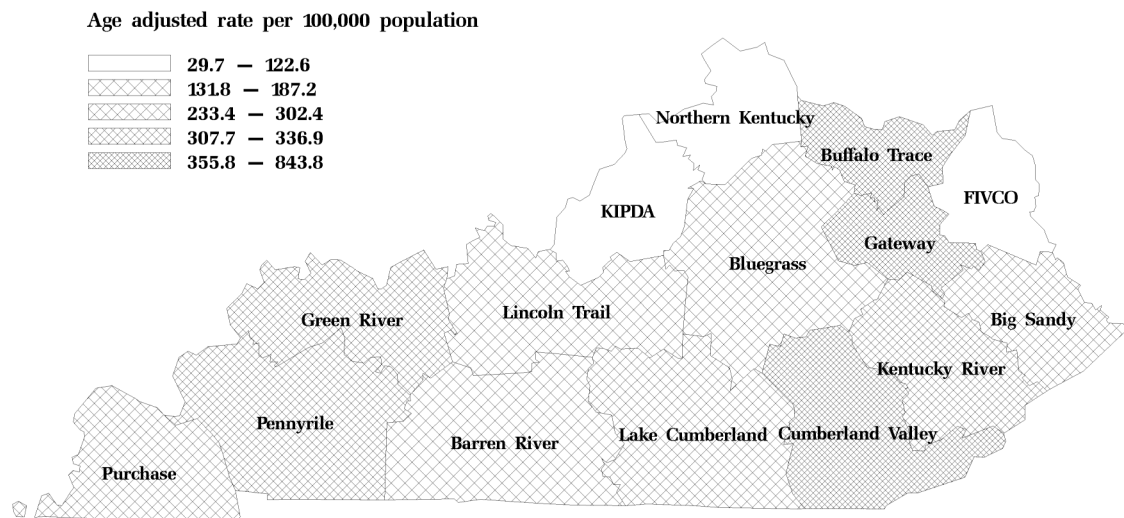
### Number of falls hospitalizations by age group (2004-2008)

	<1	1-4	5-14	15-24	25-34	35-44	45-54	55-64	65-74	75-84	85+
2004	24	66	185	173	277	411	646	844	1,380	2,501	1,985
2005	26	76	149	150	232	415	693	864	1,362	2,616	2,117
2006	24	58	193	161	225	364	695	854	1,408	2,625	2,235
2007	30	65	148	164	257	384	739	1,035	1,522	2,653	2,305
2008	34	73	162	179	260	396	766	1,166	1,744	2,993	2,601

### Detailed breakdown of external cause (2004-2008)

	Frequency	Percent
Unspecified falls	23,124	50.58
Falls on same level	12,157	26.59
Falls on or from stairs or steps	3,151	6.89
Falls from ladder or scaffolding	1,437	3.15
Other falls from one level to another (holes, building etc.)	4,993	10.92

### Falls hospitalization rate by ADD for KY residents, 2004-08



\* Rates are based on cases less than 20.



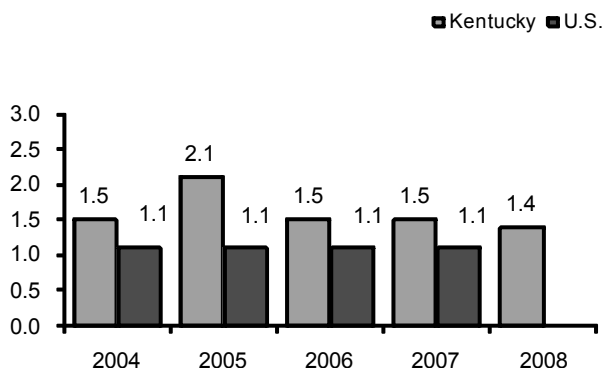
# Unintentional Fire-Burns: Fatalities



**Goals and Objectives:** According to the Mid-Decade Review of Healthy Kentuckians 2010, the objective is to reduce fire related death to no more than 1.9 per 100,000 residents.

**Definition of Unintentional Fire Burns Related Death:** ICD10-code: X00-X09, X10-X19

**Age adj fire burns fatality rate, KY vs US**



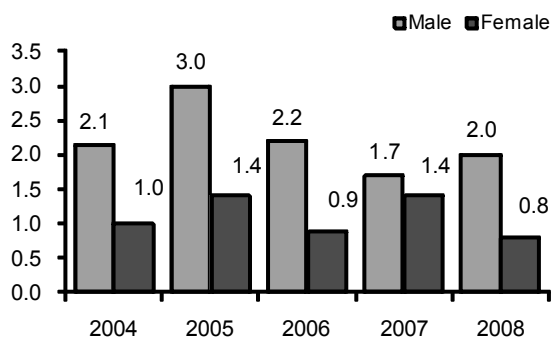
**Number of fire burns fatalities, KY**

Year 2004	64
Year 2005	88
Year 2006	62
Year 2007	67
Year 2008	60

**Number of fire burns fatalities by sex, KY**

	Male	Female
Year 2004	41	23
Year 2005	57	31
Year 2006	44	18
Year 2007	35	32
Year 2008	42	18

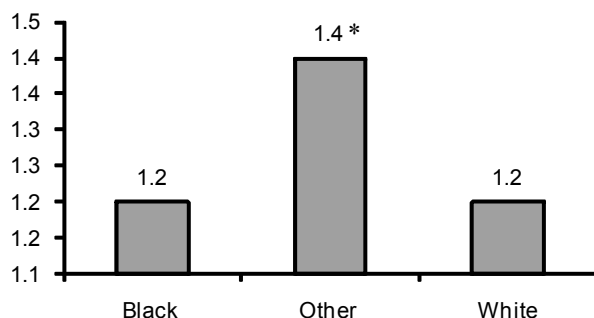
**Age adj fire burns fatality rate by sex, KY**



**Number of fire burns fatalities by race, KY**

	White	Black	Other
<b>Non Hispanic</b>			
Year 2004	54	8	0
Year 2005	68	13	1
Year 2006	59	3	0
Year 2007	53	13	0
Year 2008	57	3	0
<b>Hispanic</b>			
Year 2004	2	0	0
Year 2005	4	0	2
Year 2006	0	0	0
Year 2007	1	0	0
Year 2008	0	0	0

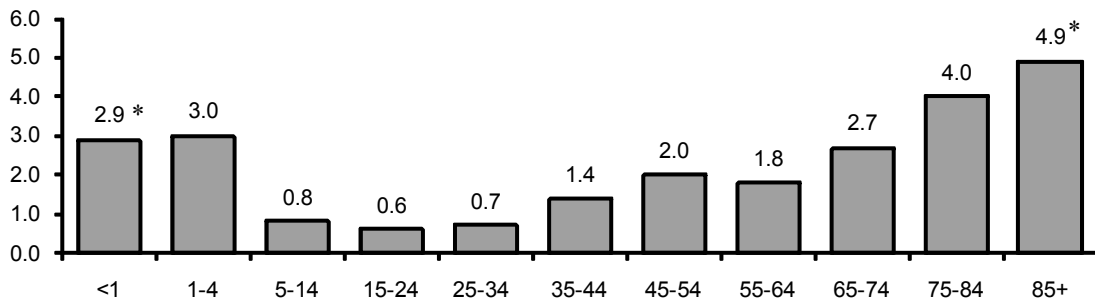
**Age adj fire burns fatality rate by race, KY, 2004-2008**



**Total YPLL due to fire burns fatalities**

Year 2004	2,070
Year 2005	2,463
Year 2006	2,180
Year 2007	2,004
Year 2008	1,587

### Age specific fire burns related fatality rate. 2004-2008



### Number of fire burns fatalities by age group (2004-2008)

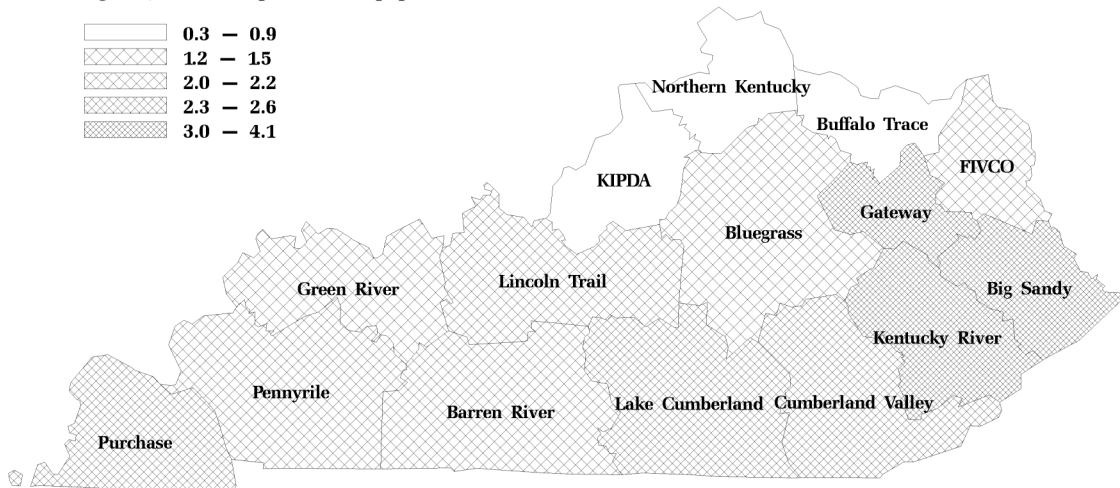
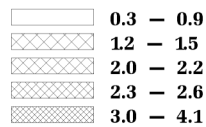
	<1	1-4	5-14	15-24	25-34	35-44	45-54	55-64	65-74	75-84	85+
2004	3	7	4	4	5	8	7	10	7	4	5
2005	5	10	5	3	2	8	13	8	11	16	7
2006	0	6	3	5	7	13	14	7	3	3	1
2007	0	7	5	2	5	9	13	10	8	6	2
2008	0	3	5	2	2	6	16	8	9	7	2

### Detailed breakdown of external cause (2004-2008)

	Frequency	Percent
Exposure to uncontrolled fire in building or structure	295	86.51
Other burns by fires or flames	20	5.87
Exposure to ignition or melting of other clothing and apparel	8	2.35
Other	18	5.28

### Fire burns related fatality rate by ADD for Kentucky residents, 2004–08

Age adjusted rate per 100,000 population



\* Rates are based on cases less than 20.

# Unintentional Fire-Burns: Hospitalizations



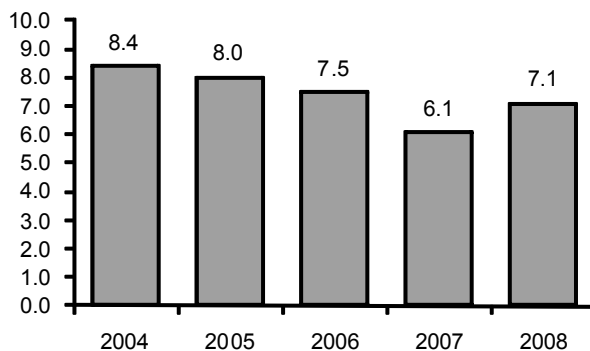
## Goals and Objectives:

There is no specified objective to reduce non-fatal unintentional fire and burns related injuries according to the Mid-Decade Review of Healthy Kentuckians 2010.

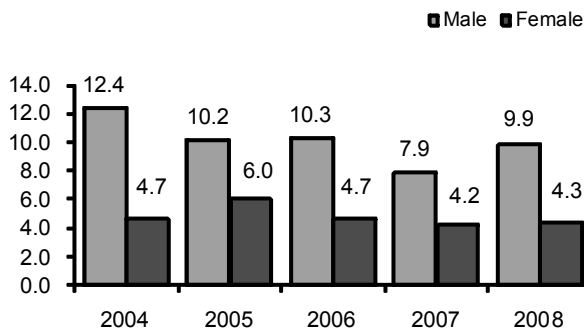
## Definition of Unintentional Fire Burns Related Hospitalizations:

E-code: 890-899, 924

Age adj fire burns related hspt rate, KY



Age adj fire burns hspt rate by sex, KY



Breakdown by top discharge status ( 2004-2008 )		
	Freq	Percent
Routine discharge	893	57.39
Home health	448	28.74
Skilled nursing facility	48	3.08
Expired/did not recover	44	2.83
Inpatient-other short-term hospital	39	2.51
Transfer to rehab facility	21	1.35
Left-discontinued care AMA	17	1.09
Inpatient-other type facility	16	1.03
Other	30	1.98

Number of hospitalizations, KY

Year 2004	346
Year 2005	334
Year 2006	313
Year 2007	261
Year 2008	302

Number of hospitalizations by sex , KY

	Male	Female
Year 2004	250	96
Year 2005	209	125
Year 2006	213	100
Year 2007	167	94
Year 2008	208	94

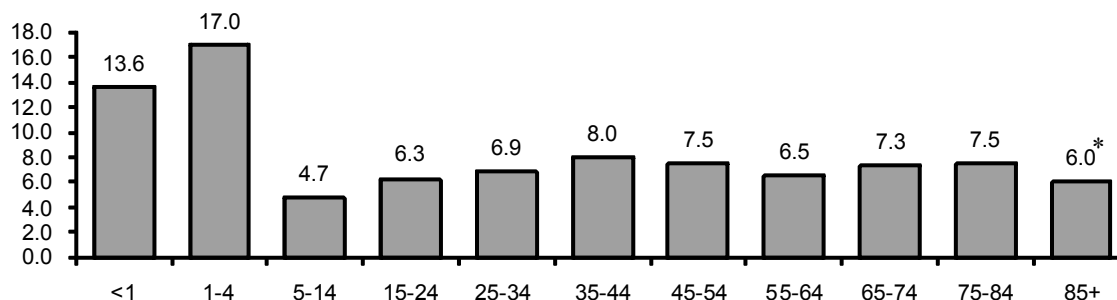
Hospitalizations charges

	Total	Per Dis.
Year 2004	\$9,840,693	\$28,441
Year 2005	\$13,286,530	\$39,780
Year 2006	\$10,461,588	\$33,424
Year 2007	\$7,023,439	\$26,910
Year 2008	\$10,865,523	\$35,979

Length of stay (days)

	Total	Per Dis.
Year 2004	2,252	6.51
Year 2005	2,453	7.34
Year 2006	1,924	6.15
Year 2007	1,595	6.11
Year 2008	1,965	6.51

### Age specific fire burns related hspt rate. 2004-2008



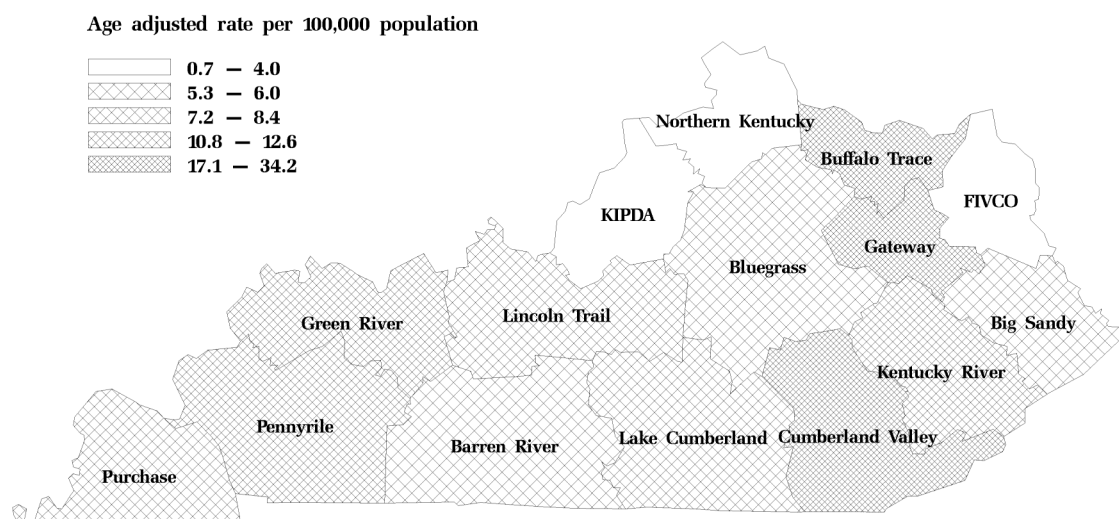
### Number of fire burns related hospitalizations by age group (2004- 2008)

	<1	1-4	5-14	15-24	25-34	35-44	45-54	55-64	65-74	75-84	85+
2004	6	36	32	42	42	77	44	29	22	13	***
2005	8	31	33	44	50	47	50	31	17	18	5
2006	6	45	22	39	41	44	46	31	20	15	***
2007	6	34	22	18	38	33	40	34	23	8	5
2008	12	41	21	34	31	43	51	29	22	14	***

### Detailed breakdown of external cause (2004-2008)

	Frequency	Percent
Ignition of highly inflammable materials	322	20.69
Ignition of clothing	124	7.98
Conflagration in private dwelling	143	9.19
Other burns by hot substance or objects	767	49.30
Other	200	12.85

### Fire burns related hospitalization rate by ADD for KY residents, 2004–08



\* Rates are based on cases less than 20. \*\*\* All cells less than 5 are suppressed.

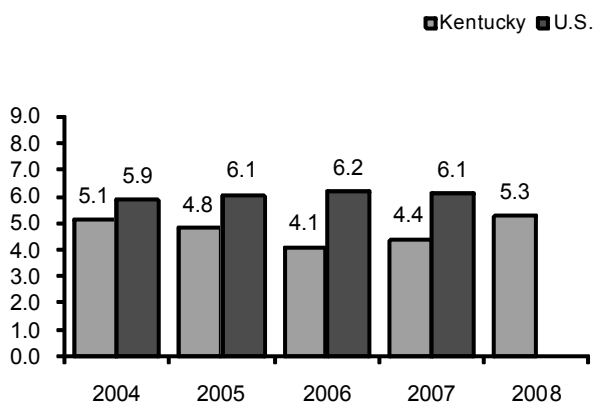
# Interpersonal Violence Homicide



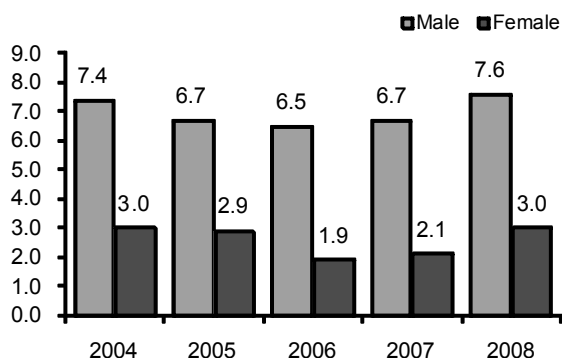
**Goals and Objectives:** According to the Mid-Decade Review of Healthy Kentuckians 2010, the objective is to reduce homicides to less than 4.2 per 100,000 residents.

**Definition of Homicide:** ICD10-code: X85-Y09, Y871

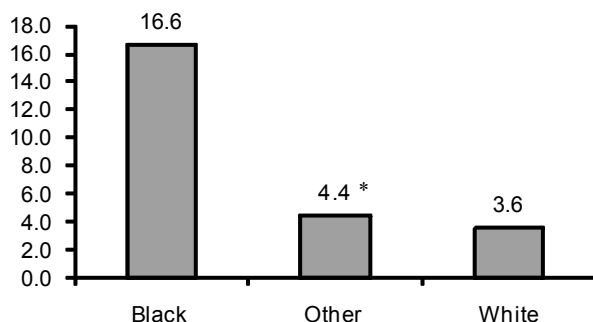
**Age adjusted homicide rate, KY vs US**



**Age adjusted homicide rate by sex, KY**



**Age adjusted homicide rate by race, KY, 2004-2008**



**Number of homicides , KY**

Year 2004	212
Year 2005	201
Year 2006	172
Year 2007	186
Year 2008	222

**Number of homicides by sex, KY**

	Male	Female
Year 2004	151	61
Year 2005	141	60
Year 2006	132	40
Year 2007	142	44
Year 2008	158	64

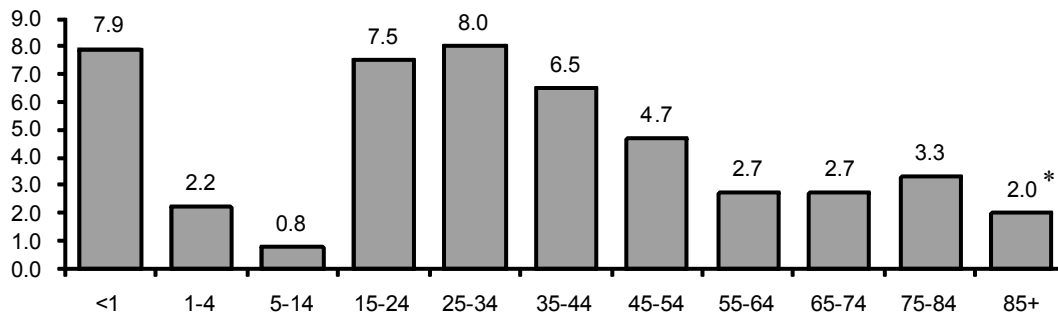
**Number of homicides by race, KY**

	White	Black	Other
<b>Non Hispanic</b>			
Year 2004	141	63	1
Year 2005	127	59	5
Year 2006	118	48	1
Year 2007	113	66	1
Year 2008	154	56	2
<b>Hispanic</b>			
Year 2004	7	0	0
Year 2005	9	0	1
Year 2006	3	1	1
Year 2007	4	0	2
Year 2008	10	0	0

**Total YPLL due to homicides**

Year 2004	8,475
Year 2005	8,166
Year 2006	6,755
Year 2007	7,140
Year 2008	8,576

### Age specific homicide rate. 2004-2008



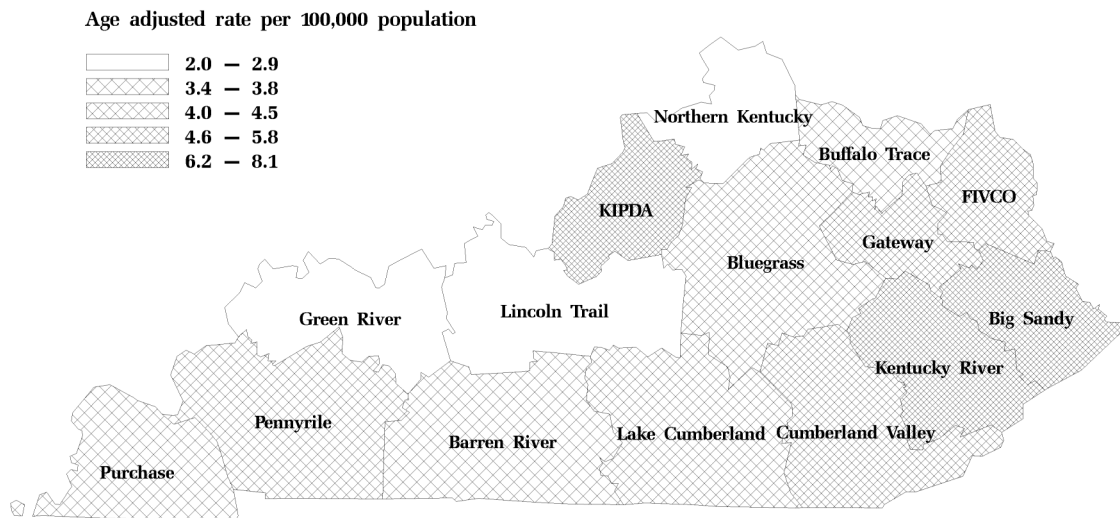
### Number of homicides by age group (2004- 2008)

	<1	1-4	5-14	15-24	25-34	35-44	45-54	55-64	65-74	75-84	85+
2004	3	7	2	53	49	42	26	13	9	6	2
2005	7	4	1	52	44	44	24	12	9	3	1
2006	4	6	6	37	40	34	13	12	9	10	1
2007	3	2	5	34	45	32	42	14	7	2	0
2008	5	5	9	34	55	44	39	14	5	9	3

### Detailed breakdown of external cause (2004-2008)

	Frequency	Percent
Assault by handgun, rifle, shotgun, large firearm discharge	89	8.97
Assault by sharp object	107	10.78
Assault by other and unspecified firearm discharge	572	57.60
Assault by unspecified means	134	13.49
Other	91	9.16

### Homicide rate by ADD for KY residents, 2004–08



\* Rates are based on cases less than 20.

# Interpersonal Violence: Assault Hospitalizations



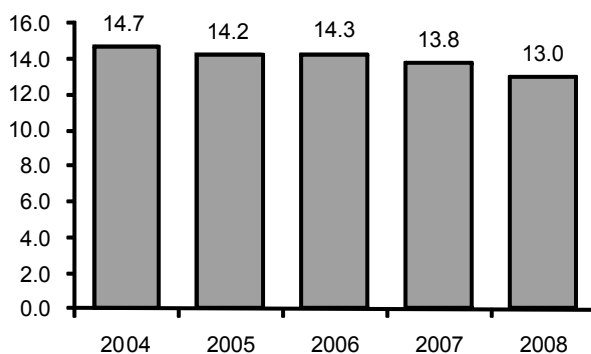
## Goals and Objectives:

There is no specified objective to reduce assault related hospitalizations according to the Mid-Decade Review of Healthy Kentuckians 2010.

## Definition of Assault:

E-code: 960-969

Age adj assault hspt rate, KY



Age adj assault hspt rate by sex, KY



Breakdown by top discharge status ( 2004-2008 )

	Freq	Percent
Routine discharge	2,356	80.49
Home health	204	6.97
Left-discontinued care AMA	79	2.70
To rehab facility	78	2.66
Expired/did not recover	65	2.22
Inpatient-other type facility	51	1.74
Skilled nursing facility	47	1.61
Other	47	1.61

Number of hospitalizations, KY

Year 2004	614
Year 2005	592
Year 2006	598
Year 2007	579
Year 2008	544

Number of hospitalizations by sex , KY

	Male	Female
Year 2004	533	81
Year 2005	490	102
Year 2006	503	94
Year 2007	493	86
Year 2008	447	97

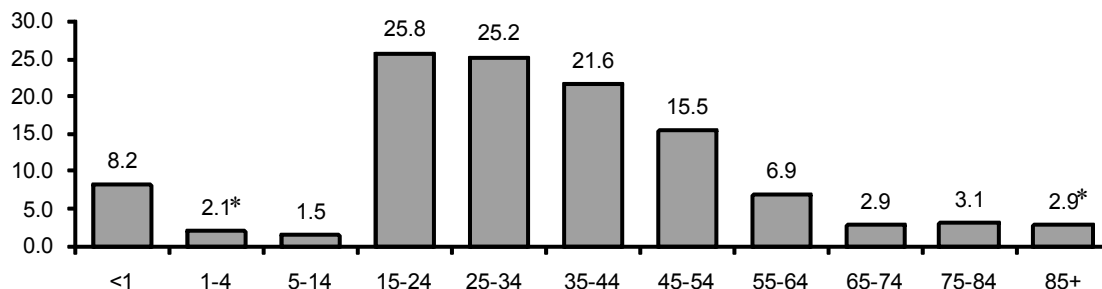
Hospitalizations charges

	Total	Per Dis.
Year 2004	\$19,806,731	\$32,259
Year 2005	\$21,956,639	\$37,089
Year 2006	\$23,630,500	\$39,516
Year 2007	\$22,525,548	\$38,904
Year 2008	\$28,464,072	\$52,517

Length of stay (days)

	Total	Per Dis.
Year 2004	3,132	5.10
Year 2005	3,102	5.24
Year 2006	3,019	5.05
Year 2007	3,059	5.28
Year 2008	3,245	5.97

### Age specific assault injury hspt rate. 2004-2008



### Number of hospitalizations due to assault by age group (2004- 2008)

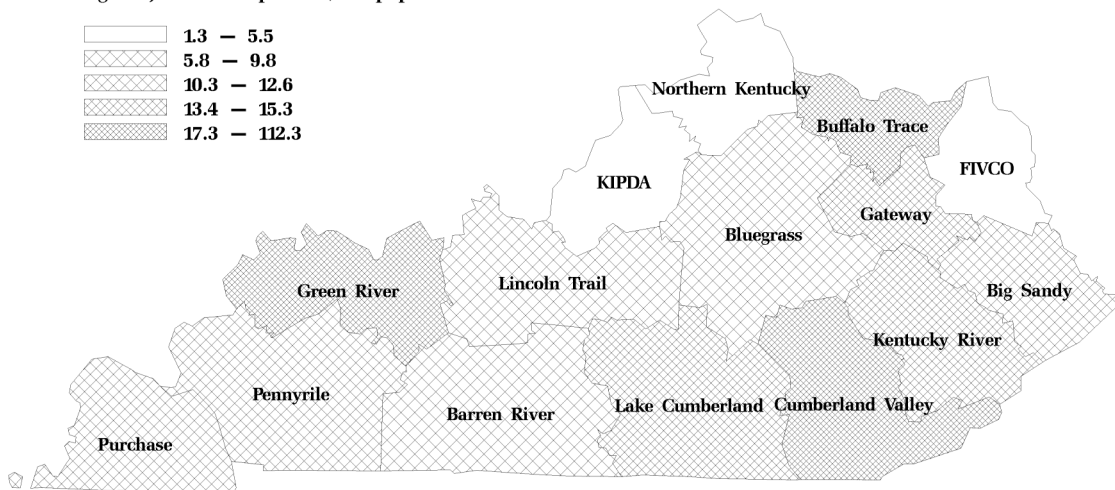
	<1	1-4	5-14	15-24	25-34	35-44	45-54	55-64	65-74	75-84	85+
2004	***	5	6	162	160	138	88	39	5	6	***
2005	5	***	15	132	149	135	107	35	5	***	***
2006	9	***	8	154	154	129	88	35	10	6	***
2007	***	5	6	140	157	127	100	26	10	***	***
2008	***	5	6	134	118	127	98	29	11	9	5

### Detailed breakdown of external cause (2004-2008)

	Frequency	Percent
Fight, brawl, rape	630	21.52
Assault by firearms and explosives	640	21.85
Assault by cutting and piercing instrument	576	19.68
Unspecified means	1,015	34.68
Other	66	2.25

### Assault hospitalization rate by ADD for KY residents, 2004–08

Age adjusted rate per 100,000 population



\* Rates are based on cases less than 20. \*\*\* All cells less than 5 are suppressed.



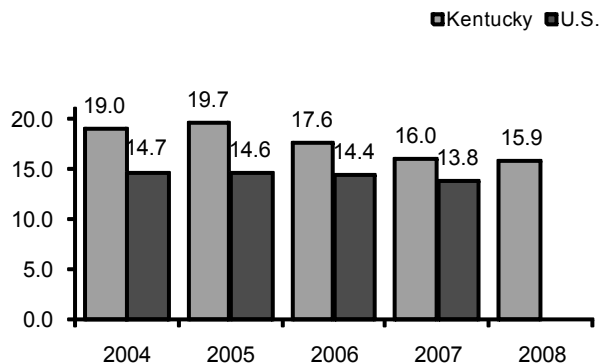
# Motor Vehicle Traffic Crashes: Fatalities



**Goals and Objectives:** According to the Mid-Decade Review of Healthy Kentuckians 2010, the objective is to reduce death caused by motor vehicle crashes to no more than 12 per 100,000 residents and 1 per 100 million vehicle miles by the end of 2010.

**Definition of Fatal MV Traffic:** ICD10-code: V30-79 (.4-.9) or V20-28 (.3-.9), V29 (.4-.9) or V80 (.3-.5) or V12-14 (.3-.9) V19 (.4-.9) or V02-04 (.1, .9) V09.2 or V86 (.0-.3) or V83-85 (.0-.3), V81.1, V82.1 or V87 (.0-.8), V89.2

Age adjusted MV traffic fatality rate by year



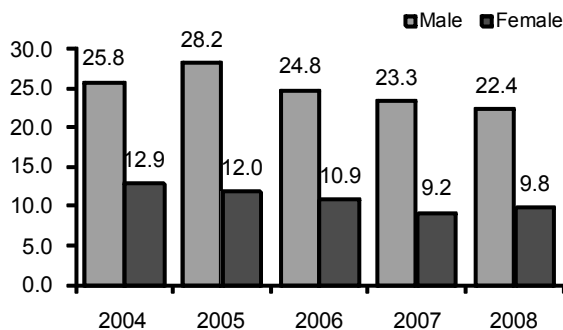
Number of MV traffic fatalities , KY

Year 2004	796
Year 2005	834
Year 2006	743
Year 2007	681
Year 2008	686

Number of MV traffic fatalities by sex, KY

	Male	Female
Year 2004	523	273
Year 2005	574	260
Year 2006	509	234
Year 2007	479	202
Year 2008	466	219

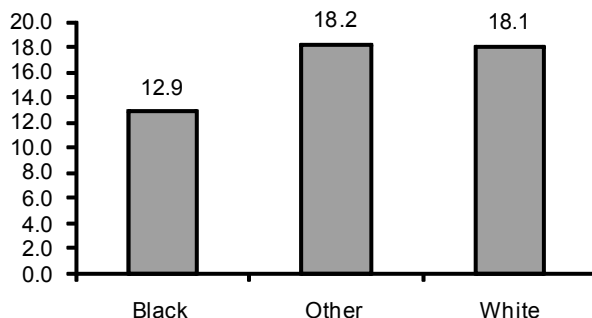
Age adj. MV traffic fatality rate by sex, KY



Number of MV traffic fatalities by race, KY

	White	Black	Other
Non Hispanic			
Year 2004	714	43	6
Year 2005	744	45	10
Year 2006	673	41	4
Year 2007	635	33	5
Year 2008	619	47	3
Hispanic			
Year 2004	31	2	2
Year 2005	24	9	9
Year 2006	18	6	3
Year 2007	7	1	2
Year 2008	16	1	9

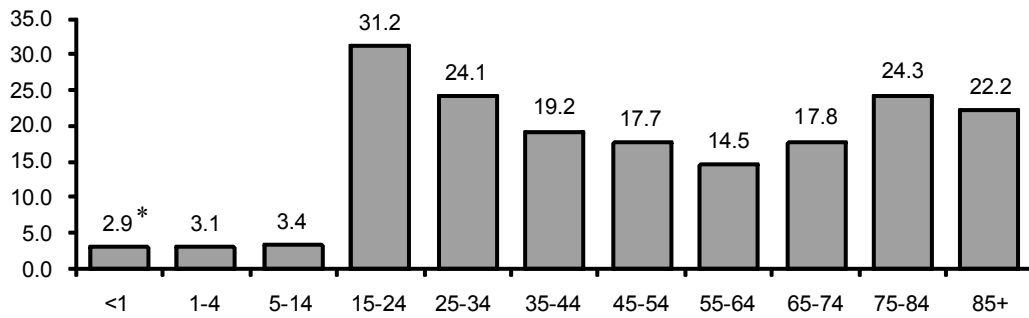
Age adj. MV traffic fatality rate by race, KY, 2004-2008



Total YPLL due to MV traffic fatalities

Year 2004	30,115
Year 2005	28,598
Year 2006	26,155
Year 2007	23,211
Year 2008	23,283

### Age specific MV traffic fatality rate. 2004-2008



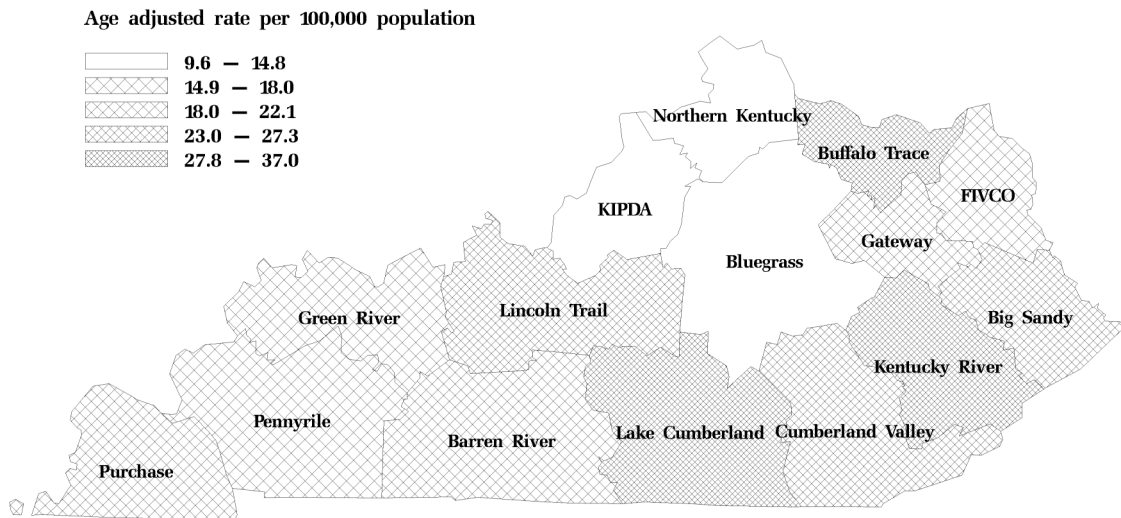
Number of MV traffic fatalities by age group (2004- 2008)

	<1	1-4	5-14	15-24	25-34	35-44	45-54	55-64	65-74	75-84	85+
2004	3	7	24	215	161	120	111	60	42	39	14
2005	2	7	26	190	150	114	122	86	56	58	23
2006	0	11	20	181	131	114	107	62	54	52	11
2007	1	2	12	148	133	124	88	61	57	40	15
2008	2	7	11	139	129	110	121	75	46	32	14

Detailed breakdown of Injured persons (2004-2008)

	Frequency	Percent
Motor vehicle occupants	1,547	41.36
Motorcyclist	324	8.66
Pedestrian	219	5.86
Pedal cyclist	22	0.59
Other or unspecified	1,628	43.53

### Traffic MVC fatality rate by ADD for Kentucky residents, 2004-08



\* Rates are based on cases less than 20.

# Motor Vehicle Traffic Crashes: Hospitalizations



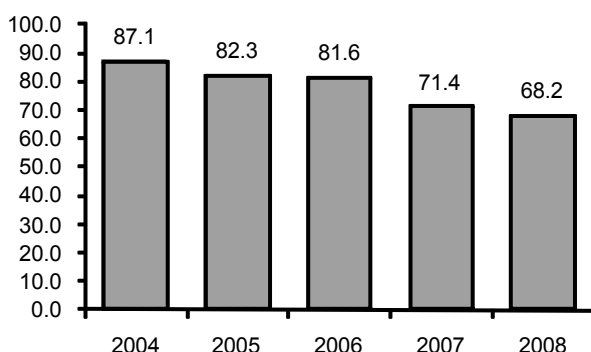
## Goals and Objectives:

According to the Mid-Decade Review of Healthy Kentuckians 2010, the objective is to reduce hospitalizations for nonfatal injuries caused by motor vehicle crashes to 72 per 100,000 residents by the end of 2010.

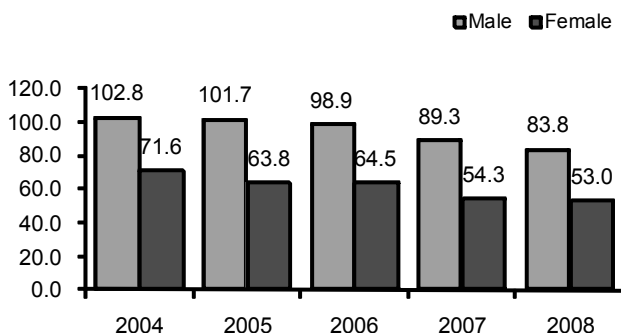
## Definition of MV Traffic Crashes Hospitalizations:

E-code: 810 - 819

Age adj MV traffic hspt rate, KY



Age adj MV traffic hspt rate by sex, KY



Breakdown by top discharge status ( 2004-2008 )		
	Freq	Percent
Routine discharge	11,682	70.74
Home health	1,773	10.74
Rehab facility	1,134	6.87
Skilled Nursing facility	726	4.40
Expired/did not recover	453	2.74
Inpatient-other short-term hospital	284	1.72
Inpatient-other type facility	155	0.94
Left-discontinued care AMA	124	0.75
Other	182	1.10

Number of hospitalizations, KY

Year 2004	3,649
Year 2005	3,463
Year 2006	3,426
Year 2007	3,045
Year 2008	2,931

Number of hospitalizations by sex , KY

	Male	Female
Year 2004	2,102	1,545
Year 2005	2,085	1,378
Year 2006	2,025	1,401
Year 2007	1,853	1,192
Year 2008	1,753	1,178

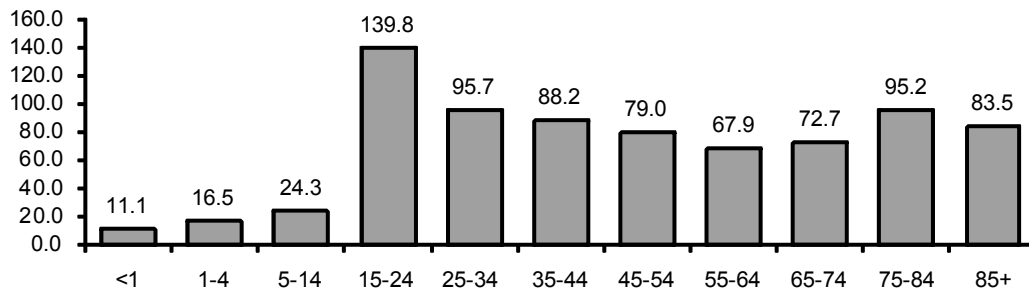
Hospitalizations charges

	Total	Per Dis.
Year 2004	\$134,165,759	\$36,768
Year 2005	\$142,006,508	\$41,007
Year 2006	\$158,888,350	\$52,180
Year 2007	\$169,811,672	\$57,936
Year 2008	\$134,165,759	\$36,768

Length of stay (days)

	Total	Per Dis.
Year 2004	20,982	5.75
Year 2005	19,925	5.75
Year 2006	19,158	6.29
Year 2007	19,076	6.51
Year 2008	20,982	5.75

### Age specific MV traffic injury hspt rate. 2004-2008



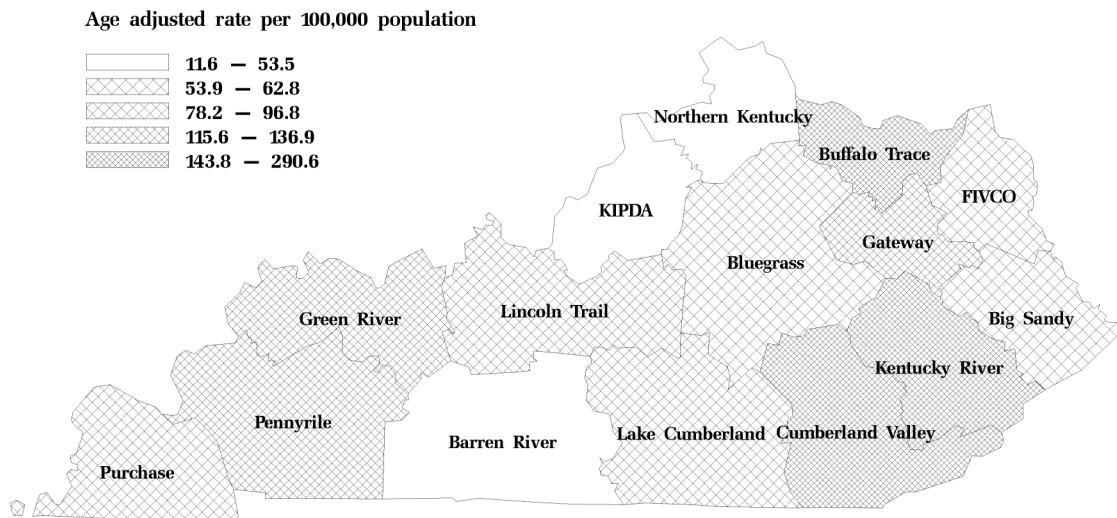
### Number of MV traffic injury hospitalizations by age group (2004-2008)

	<1	1-4	5-14	15-24	25-34	35-44	45-54	55-64	65-74	75-84	85+
2004	5	43	159	883	624	583	503	354	229	203	63
2005	10	40	136	825	571	581	521	313	205	206	54
2006	6	34	156	846	592	579	483	286	214	162	68
2007	5	22	105	722	521	481	469	313	185	162	60
2008	5	42	110	636	490	453	470	341	206	133	45

### Detailed breakdown of injured person (2004-2008)

	Frequency	Percent
Motor vehicle occupants	12,296	74.46
Motorcyclist or passenger on motorcycle	2,089	12.65
Pedestrian	850	5.15
Pedal cyclist	188	1.14
Unspecified	1,000	6.06
Other	90	0.54

### Traffic MVC injury hspt rate by ADD for KY residents, 2004-08



\* Rates are based on cases less than 20. \*\*\* All cells less than 5 are suppressed.

# Natural/environmental Related Fatalities

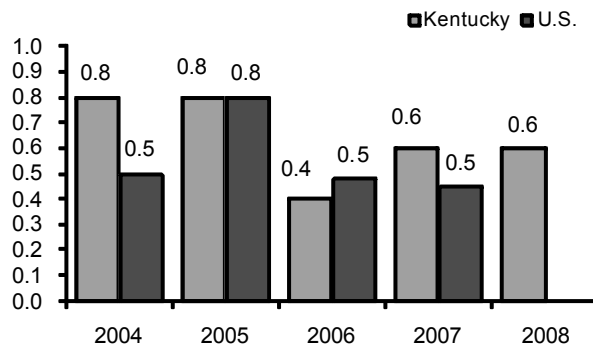


## Goals and Objectives

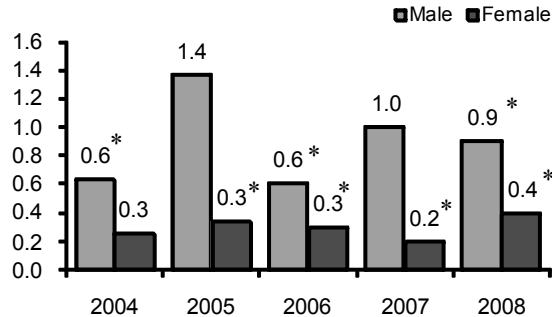
There is no specified objective to reduce fatal injuries due to natural/environmental according to the Mid-Decade Review of Healthy Kentuckians 2010.

**Definition of Natural/environmental Related Death:** ICD10-code: W92-W99, W42-W43, W53-W64, X20-X39, X51-X57

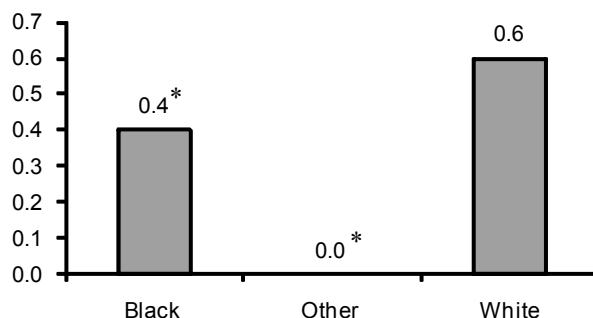
Age adjusted fatality rate, KY vs US



Age adjusted fatality rate by sex, KY



Age adjusted fatality rate by race, KY, 2004-2008



Number of fatalities , KY

Year 2004	19
Year 2005	33
Year 2006	18
Year 2007	25
Year 2008	28

Number of fatalities by sex, KY

	Male	Female
Year 2004	13	6
Year 2005	25	8
Year 2006	11	7
Year 2007	20	5
Year 2008	19	9

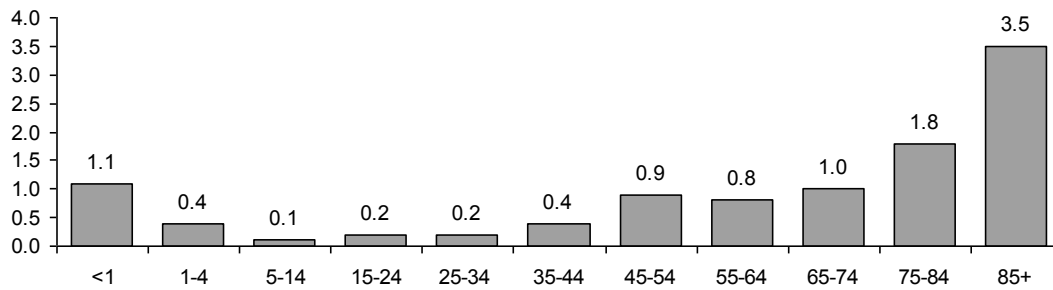
Number of fatalities by race, KY

	White	Black	Other
Non Hispanic			
Year 2004	18	1	0
Year 2005	31	2	0
Year 2006	18	0	0
Year 2007	24	1	0
Year 2008	26	1	0
Hispanic			
Year 2004	0	0	0
Year 2005	0	0	0
Year 2006	0	0	0
Year 2007	0	0	0
Year 2008	1	0	0

Total YPLL due to fatalities

Year 2004	523
Year 2005	619
Year 2006	299
Year 2007	574
Year 2008	738

### Age specific natural environmental related fatality rate\*. 2004-2008



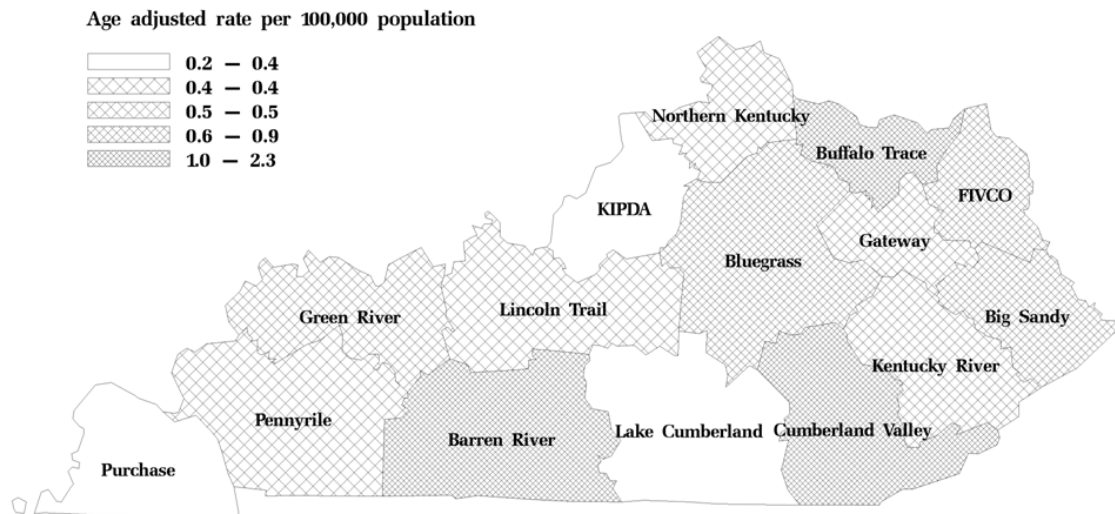
Number of fatalities by age group (2004- 2008)

	<1	1-4	5-14	15-24	25-34	35-44	45-54	55-64	65-74	75-84	85+
2004	1	1	0	4	1	0	2	4	1	3	2
2005	0	1	0	1	3	3	7	4	3	4	7
2006	0	0	0	0	0	2	6	3	3	2	2
2007	0	0	2	0	1	4	8	3	4	3	0
2008	2	2	0	1	1	4	4	6	3	4	1

Detailed breakdown of external cause (2004-2008)

	Frequency	Percent
Exposure to excessive cold	59	47.97
Exposure to excessive natural heat	25	20.33
Bitten or struck by dogs or other mammals	14	11.38
Contact with venomous animals and plants	7	5.69
Exposure to other forces of nature	18	14.63

### Fatality rate due to environmental factors by ADD for Kentucky residents, 2004–08



\* Rates are based on cases less than 20.

## Natural Environmental Related: Hospitalizations



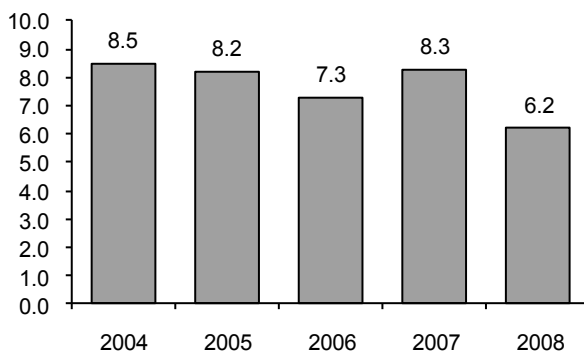
### Goals and Objectives:

There is no specified objective to reduce natural environmental related hospitalizations according to the Mid-Decade Review of Healthy Kentuckians 2010.

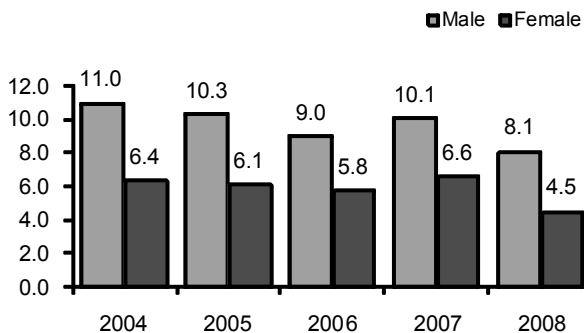
### Definition of Natural Environmental Related Hospitalizations:

E-code: 900-909, 9280, 9281, 9282

Age adjusted hspt rate, KY



Age adjusted hspt rate by sex, KY



Number of hospitalizations, KY

Year 2004	354
Year 2005	343
Year 2006	312
Year 2007	358
Year 2008	269

Number of hospitalizations by sex, KY

	Male	Female
Year 2004	218	136
Year 2005	211	132
Year 2006	183	129
Year 2007	205	153
Year 2008	166	103

Hospitalizations charges

	Total	Per Dis.
Year 2004	\$3,819,091	\$10,819
Year 2005	\$4,304,808	\$12,550
Year 2006	\$3,971,398	\$12,729
Year 2007	\$5,214,039	\$14,564
Year 2008	\$5,596,470	\$20,805

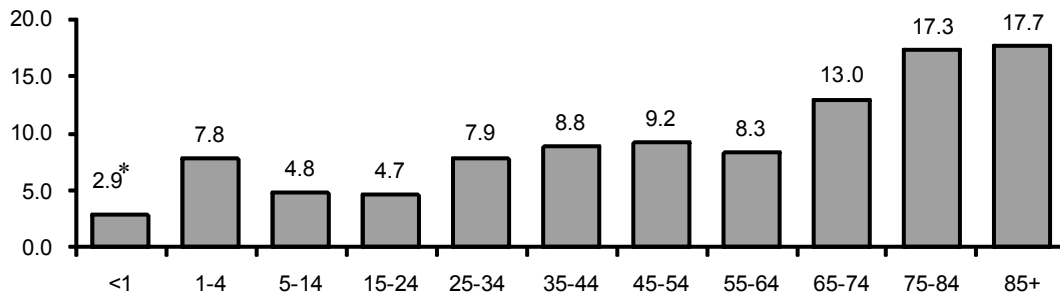
Breakdown by top discharge status ( 2004-2008 )

	Freq	Percent
Routine discharge	1,337	81.77
Home health	129	7.89
Skilled Nursing Facility	51	3.12
Inpatient-other short term hospitals	23	1.41
Rehab facility	19	1.16
Left-discontinued care AMA	17	1.04
Expired/did not recover	17	1.04
Other	42	2.57

Length of stay (days)

	Total	Per Dis.
Year 2004	1,125	3.2
Year 2005	1,273	3.7
Year 2006	1,031	3.3
Year 2007	1,091	3.0
Year 2008	1,091	3.1

### Age specific natural/environment related hspt rate. 2004-2008



Number of hospitalizations by age group (2004- 2008)

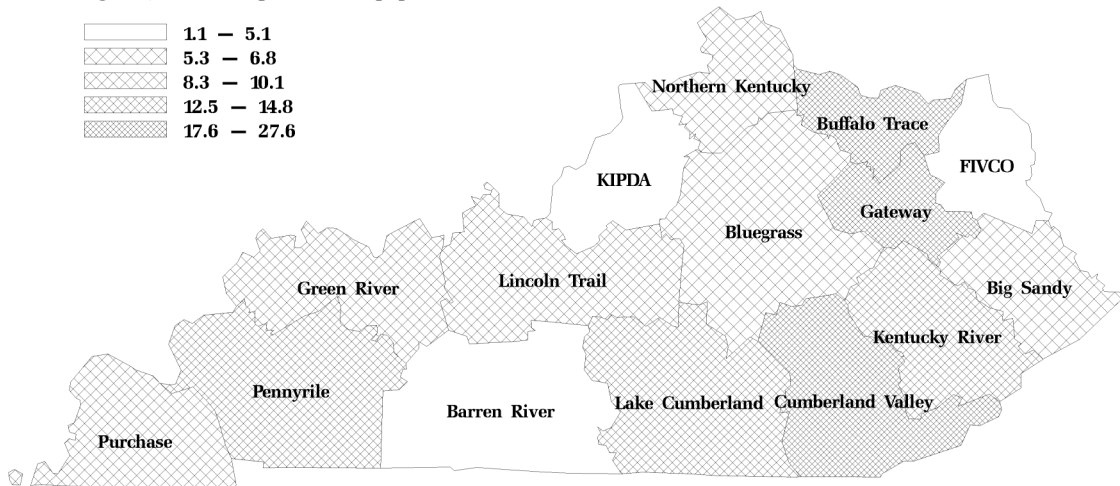
	<1	1-4	5-14	15-24	25-34	35-44	45-54	55-64	65-74	75-84	85+
2004	0	24	30	32	59	58	56	36	24	25	9
2005	***	21	31	24	49	57	59	43	21	26	11
2006	***	8	24	31	42	52	62	40	23	18	8
2007	***	18	24	27	47	66	62	49	26	23	15
2008	***	15	24	17	35	33	47	28	25	26	17

### Detailed breakdown of external cause (2004-2008)

	Frequency	Percent
Other injury caused by animals	723	44.22
Venomous animals and plants as the cause of poisoning and toxic reactions	560	34.25
Excessive heat	182	11.14
Excessive cold	112	6.85
Other	59	3.55

### Hospitalization rate due to environmental factors by ADD for KY residents, 2004–08

Age adjusted rate per 100,000 population



\* Rates are based on cases less than 20. \*\*\* All cells less than 5 are suppressed.



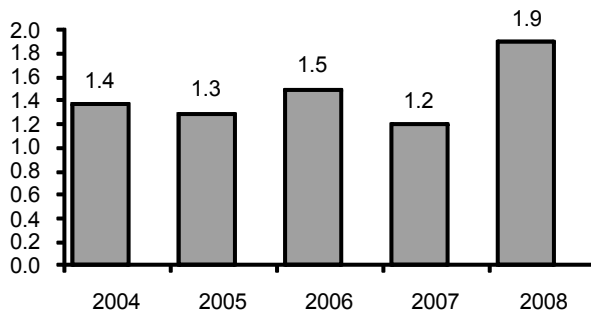
# Motor Vehicle Nontraffic Injuries Fatalities



**Goals and Objectives:** There is no specified objective to reduce fatal injuries due to nontraffic crashes according to the Mid-Decade Review of Healthy Kentuckians 2010.

**Definition of Fatal MV Nontraffic:** ICD10-code: V30-79 (.0-.3) or V20-28 (.0-.2), V29 (.0-.3) or V80 (.0-.2, .6-.9) or V10-11, V12-14 (.0-.2), V15-18, V19 (.0-.3, .8, .9) or V01, V02-04 (.0), V05, V06, V09 (.0, .1, .3, .9) or V86 (.4-.9) or V83-85 (.4-.9), V81-82 (.0, .2 -.9) or V87.9, V89 (.0, .1, .3, .9)

Age adj. MV nontraffic fatality rate, KY



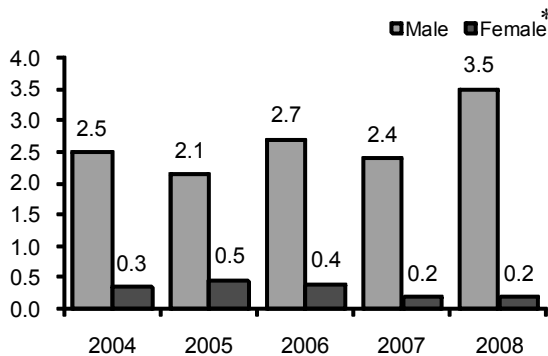
Number of MV nontraffic fatalities , KY

Year 2004	57
Year 2005	56
Year 2006	64
Year 2007	52
Year 2008	79

Number of MV nontraffic fatalities by sex, KY

	Male	Female
Year 2004	50	7
Year 2005	46	10
Year 2006	55	9
Year 2007	48	4
Year 2008	74	5

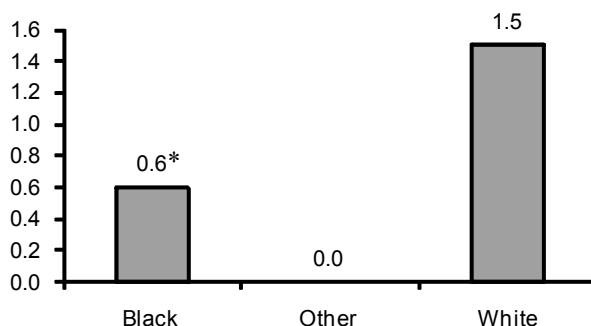
Age adj. MV nontraffic fatality rate, KY



Number of MV nontraffic fatalities by race, KY

	White	Black	Other
Non Hispanic			
Year 2004	55	2	0
Year 2005	54	1	0
Year 2006	60	2	0
Year 2007	50	1	0
Year 2008	75	3	0
Hispanic			
Year 2004	0	0	0
Year 2005	1	0	0
Year 2006	2	0	0
Year 2007	1	0	0
Year 2008	1	0	0

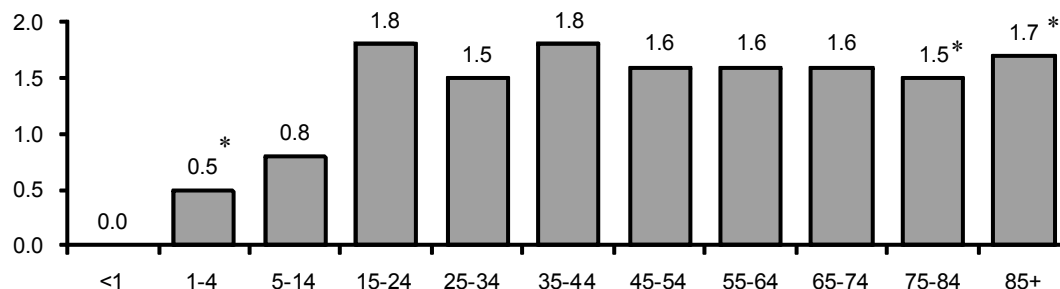
Age adj. MV nontraffic fatality rate, KY,  
2001-2005



Total YPLL due to MV nontraffic fatalities

Year 2004	2,218
Year 2005	1,813
Year 2006	1,968
Year 2007	1,625
Year 2008	2,996

### Age specific MV nontraffic fatality rate. 2004-2008



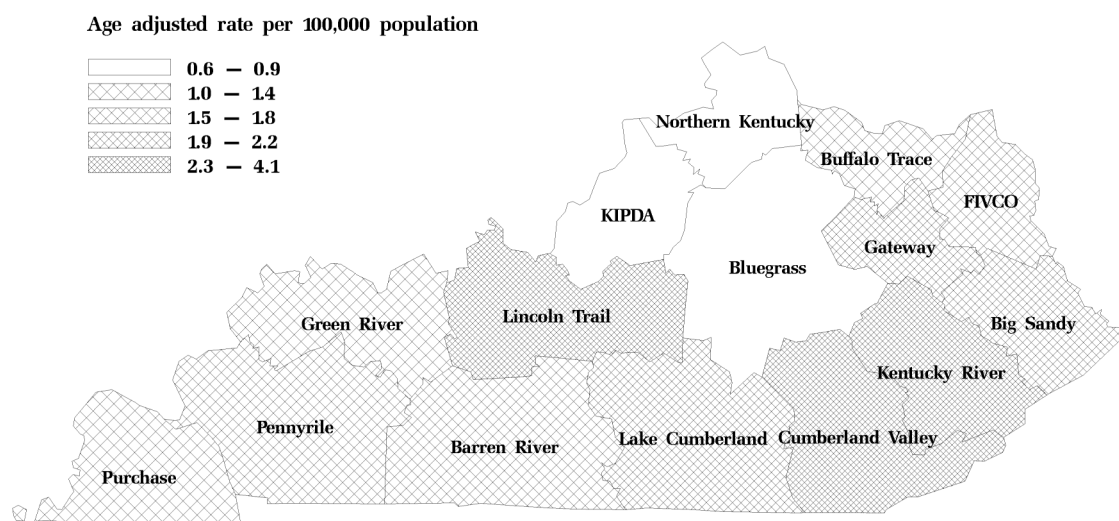
### Number of MV nontraffic fatalities by age group (2004- 2008)

	<1	1-4	5-14	15-24	25-34	35-44	45-54	55-64	65-74	75-84	85+
2004	0	2	8	9	6	12	9	8	0	1	2
2005	0	2	2	6	8	9	12	9	8	0	0
2006	0	0	4	8	9	13	10	8	4	6	2
2007	0	1	4	9	5	6	9	5	6	5	2
2008	0	1	4	17	17	15	10	8	5	2	0

### Detailed breakdown of Injured persons (2004-2008)

	Frequency	Percent
Occupants of ATV or other motor vehicle designated primarily for off-road use	198	64.29
Pedestrian	73	23.70
Motor vehicle occupants	14	4.55
Motorcyclist	5	1.62
Pedal cyclist	18	5.84

### Nontraffic injury fatality rate by ADD for Kentucky residents, 2004–08



\* Rates are based on cases less than 20.

# Motor Vehicle Nontraffic Injuries: Hospitalizations



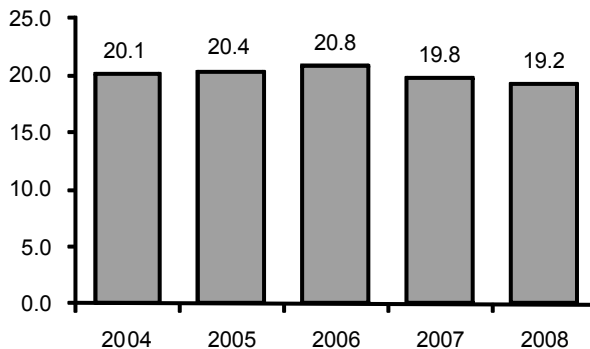
## Goals and Objectives:

There is no specified objective to reduce MV nontraffic crash hospitalizations according to the Mid-Decade Review of Healthy Kentuckians 2010.

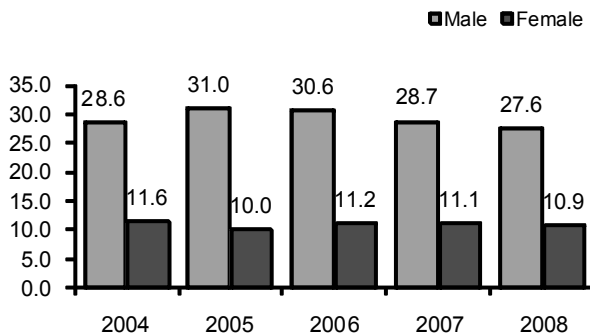
## Definition of MV Nontraffic Hospitalizations:

E-code: 800-807 (.2, .3, .9), 820-825, 826-829

Age adj MV nontraffic hspt rate, KY



Age adj MV nontraffic hspt rate by sex, KY



Breakdown by top discharge status ( 2004-2008 )		
	Freq	Percent
Routine discharge	3,455	82.73
Home health	305	7.30
Skilled Nursing facility	109	2.61
Rehab facility	142	3.40
Inpatient-other short-term hospital	65	1.56
Expired/did not recover	36	0.86
Left-discontinued care AMA	20	.48
Other	44	1.05

Number of hospitalizations, KY

Year 2004	828
Year 2005	840
Year 2006	865
Year 2007	830
Year 2008	813

Number of hospitalizations by sex , KY

	Male	Female
Year 2004	584	244
Year 2005	634	206
Year 2006	632	233
Year 2007	597	233
Year 2008	575	238

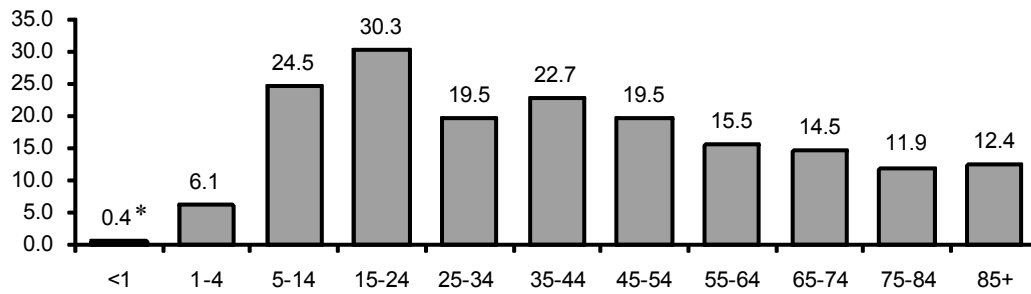
Hospitalizations charges

	Total	Per Dis.
Year 2004	\$17,462,055	\$21,089
Year 2005	\$21,193,599	\$25,230
Year 2006	\$23,413,897	\$27,068
Year 2007	\$24,779,092	\$29,854
Year 2008	\$27,740,676	\$34,163

Length of stay (days)

	Total	Per Dis.
Year 2004	3,323	4.01
Year 2005	3,390	4.04
Year 2006	3,664	4.23
Year 2007	3,521	4.24
Year 2008	3,618	4.45

### Age specific MV nontraffic hspt rate. 2004-2008



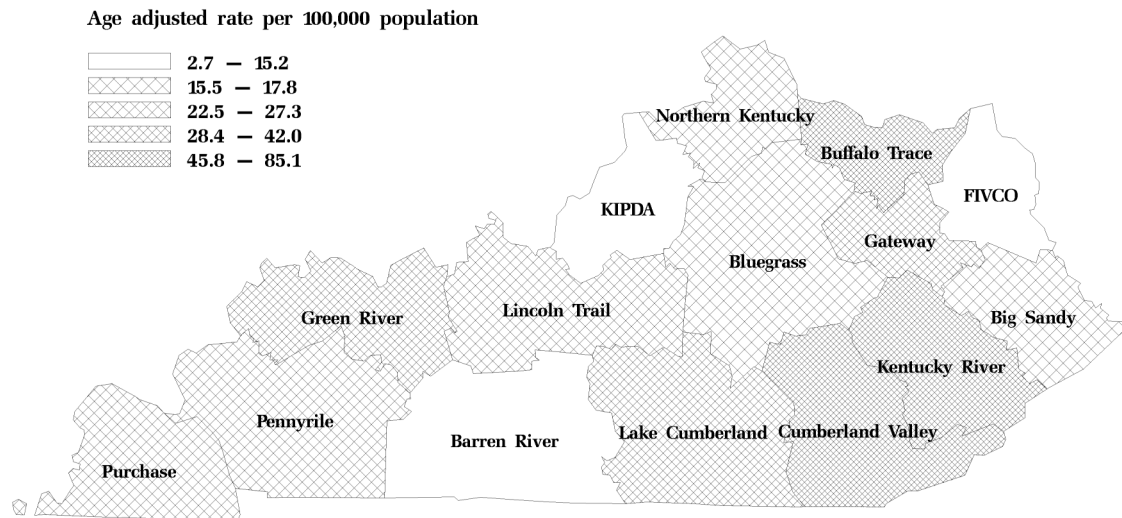
### Number of MV nontraffic hospitalizations by age group (2004- 2008)

	<1	1-4	5-14	15-24	25-34	35-44	45-54	55-64	65-74	75-84	85+
2004	0	18	143	181	117	125	107	59	43	26	9
2005	0	20	137	170	115	148	104	70	42	25	9
2006	***	8	150	179	103	140	130	74	48	23	9
2007	0	11	129	155	120	156	127	82	30	13	7
2008	0	10	113	162	116	120	135	83	44	21	9

### Detailed breakdown of injured person (2004-2008)

	Frequency	Percent
Motor vehicle occupants	1,909	45.71
Rider of animal; occupant of animal-drawn vehicle	759	18.18
Pedal cyclist	530	12.69
Motorcyclist	194	4.65
Pedestrian	139	3.33
Other or unspecified	645	15.44

### Nontraffic injury hspt rate by ADD for KY residents, 2004—08



\* Rates are based on cases less than 20. \*\*\* All cells less than 5 are suppressed.

# Overexertion: Hospitalizations



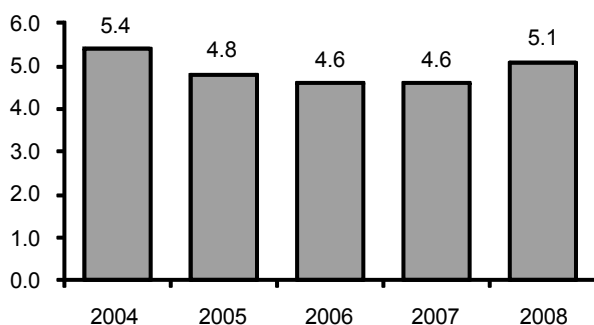
## Goals and Objectives:

There is no specified objective to reduce non-fatal overexertion related hospitalizations according to the Mid-Decade Review of Healthy Kentuckians 2010.

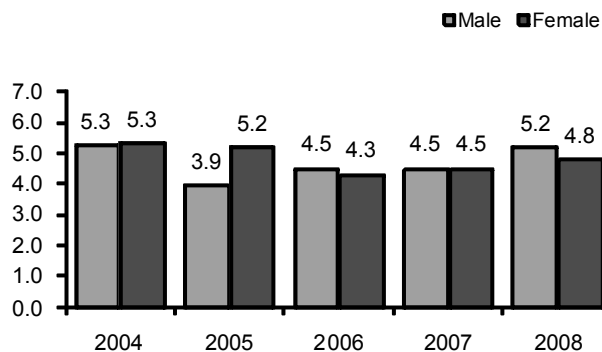
## Definition of Overexertion Related Hospitalizations:

E-code: 927

Age adjusted hspt rate, KY



Age adjusted hspt rate by sex, KY



Number of hospitalizations, KY

Year 2004	228
Year 2005	201
Year 2006	213
Year 2007	200
Year 2008	224

Number of hospitalizations by sex, KY

	Male	Female
Year 2004	105	123
Year 2005	80	121
Year 2006	94	105
Year 2007	92	108
Year 2008	108	116

Hospitalizations charges

	Total	Per Dis.
Year 2004	\$3,036,307	\$13,317
Year 2005	\$2,865,491	\$14,256
Year 2006	\$3,017,258	\$15,162
Year 2007	\$3,025,160	\$15,126
Year 2008	\$4,396,758	\$19,628

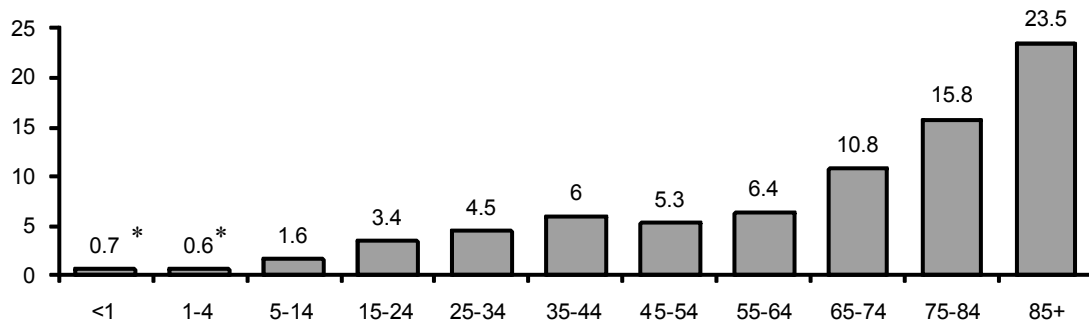
Breakdown by top discharge status ( 2004-2008 )

	Freq	Percent
Routine discharge	718	68.25
Skilled nursing facility	121	11.50
Home health	104	9.89
Rehab facility	52	4.94
Short-term facility	15	1.43
Other	42	4.00

Length of stay (days)

	Total	Per Dis.
Year 2004	785	3.44
Year 2005	675	3.36
Year 2006	623	3.13
Year 2007	562	2.81
Year 2008	706	3.15

### Age specific overexertion-related hspt rate. 2004-2008



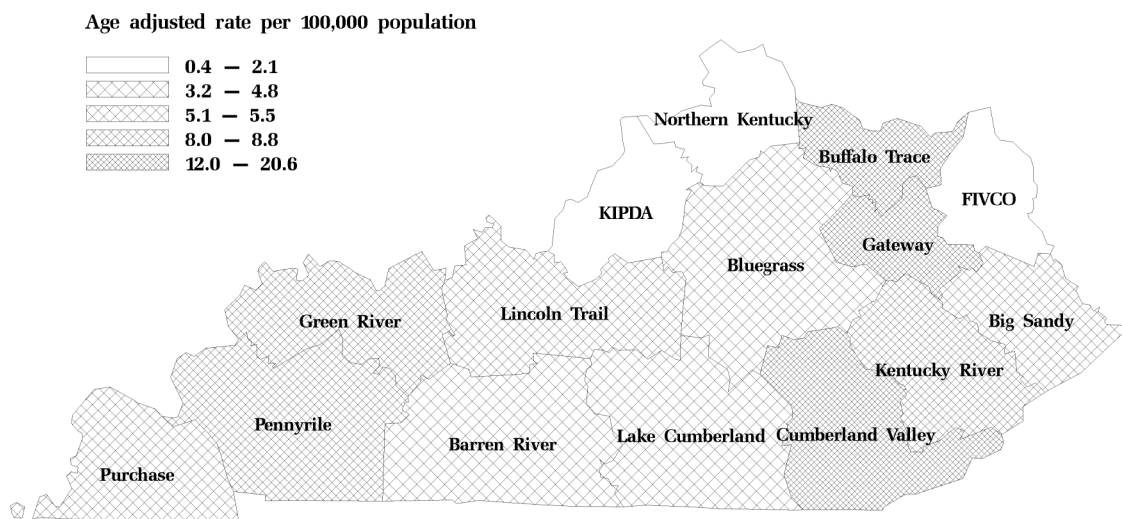
### Number of hospitalizations by age group (2004- 2008)

	<1	1-4	5-14	15-24	25-34	35-44	45-54	55-64	65-74	75-84	85+
2004	0	0	10	18	20	35	41	34	28	29	13
2005	***	***	9	14	20	23	27	22	36	34	14
2006	0	0	9	12	15	25	40	25	31	27	15
2007	***	***	6	20	27	27	25	27	24	28	13
2008	***	***	10	22	24	24	31	32	31	31	17

### Detailed breakdown of external cause (2004-2008)

Overexertion	Frequency	Percent
	1,052	100%

### Hospitalization rate due to overexertion by ADD for KY residents, 2004–08



\* Rates are based on cases less than 20. \*\*\* All cells less than 5 are suppressed.

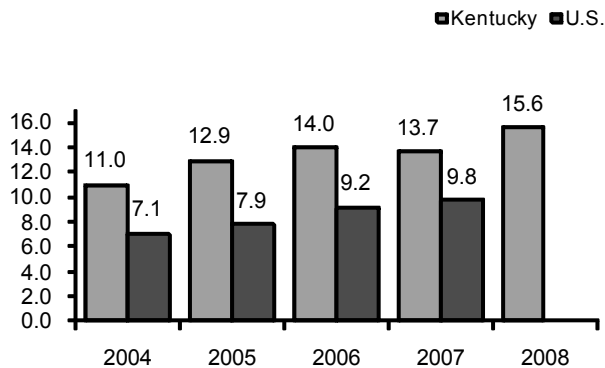
# Unintentional Poisoning: Fatalities



**Goals and Objectives:** According to the Mid-Decade Review of Healthy Kentuckians 2010, the objective is to reduce death caused by poisoning to no more than 6.0 per 100,000 residents.

**Definition of Unintentional Fatal Poisonings:** ICD10-code: X40-X49

**Age adj poisoning fatality rate, KY vs U.S.**



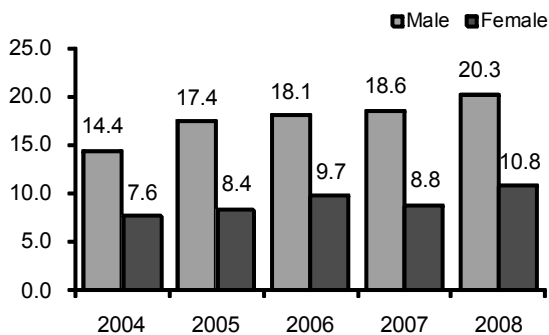
**Number of poisoning fatalities , KY**

Year 2004	455
Year 2005	544
Year 2006	588
Year 2007	586
Year 2008	663

**Number of poisoning fatalities by sex, KY**

	Male	Female
Year 2004	294	161
Year 2005	363	180
Year 2006	377	210
Year 2007	393	193
Year 2008	423	240

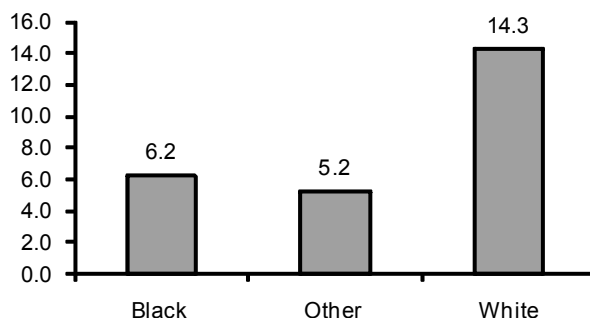
**Age adjusted poisoning fatality rate, KY**



**Number of poisoning fatalities by race, KY**

	White	Black	Other
<b>Non Hispanic</b>			
Year 2004	433	17	0
Year 2005	521	17	4
Year 2006	558	27	1
Year 2007	560	18	4
Year 2008	642	17	2
<b>Hispanic</b>			
Year 2004	5	0	0
Year 2005	2	0	0
Year 2006	2	0	0
Year 2007	3	0	1
Year 2008	1	0	1

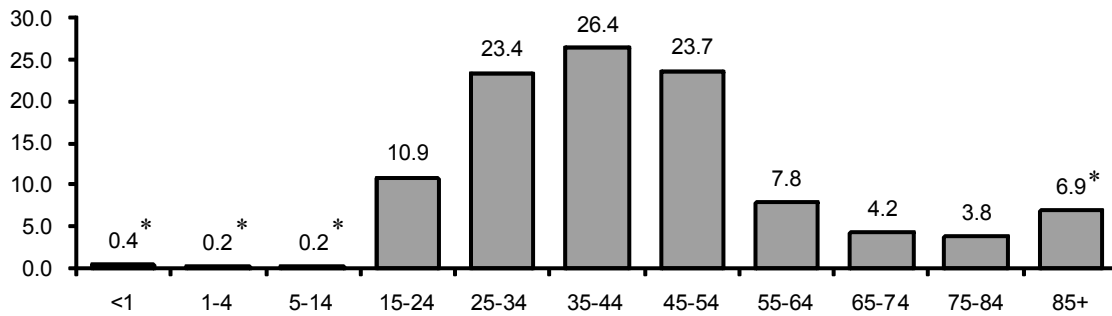
**Age adjusted poisoning fatality by race, KY, 2004-2008**



**Total YPLL due to poisoning**

Year 2004	16,190
Year 2005	19,233
Year 2006	20,838
Year 2007	20,375
Year 2008	22,246

### Age specific poisoning fatality rate. 2004-2008



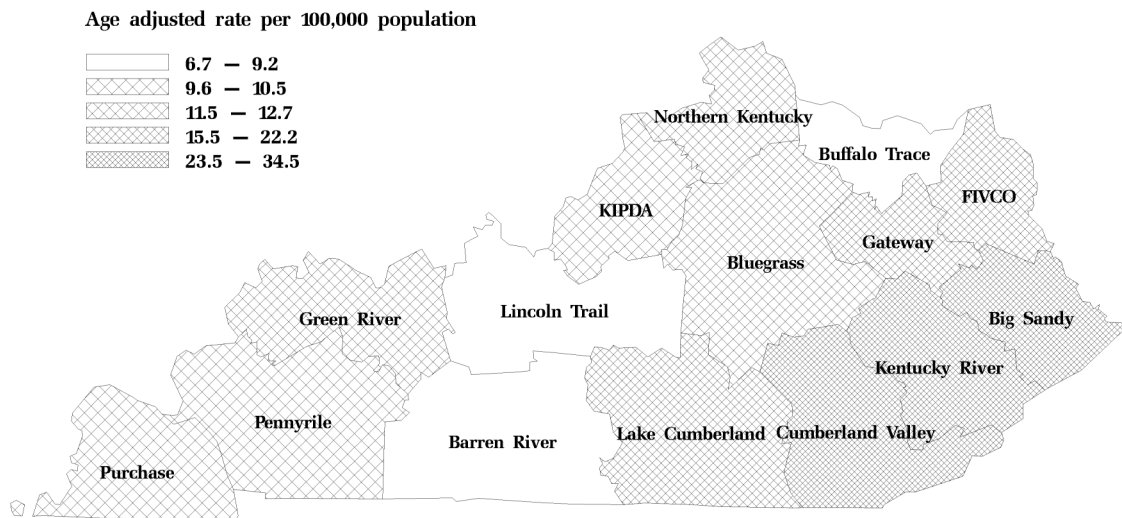
### Number of poisoning fatalities by age group (2004-2008)

	<1	1-4	5-14	15-24	25-34	35-44	45-54	55-64	65-74	75-84	85+
2004	0	1	5	53	102	146	110	16	9	8	5
2005	0	1	1	63	125	156	154	29	6	7	2
2006	0	0	0	69	159	167	123	42	15	8	5
2007	0	0	0	67	149	148	147	51	15	6	3
2008	1	0	0	53	148	186	199	46	15	6	9

### Detailed breakdown of external cause (2004-2008)

	Frequency	Percent
Poisoning by and exposure to other and unspecified drugs, medications and biological subst	1,769	62.38
Poisoning by and exposure to narcotics and psychodysleptics not elsewhere classified	766	27.01
Poisoning by antiepileptic sedative, antiparkinsonism and psychotropic drugs	74	2.61
Poisoning by and exposure to alcohol	73	2.57
Other	154	5.43

### Poisoning fatality rate by ADD for Kentucky residents, 2004–08



\* Rates are based on cases less than 20.



# Unintentional Poisoning: Hospitalizations



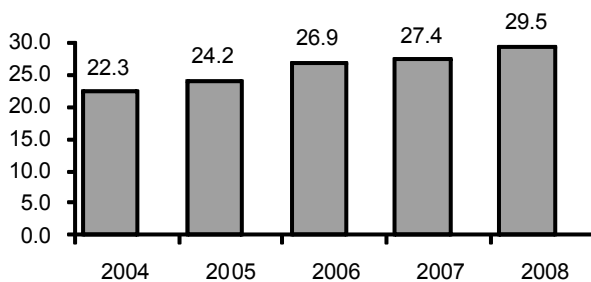
## Goals and Objectives:

There is no specified objective to reduce unintentional poisoning hospitalizations according to the Mid-Decade Review of Healthy Kentuckians 2010.

## Definition of Unintentional Poisoning Hospitalizations:

E-code: 850-858 or 860-869

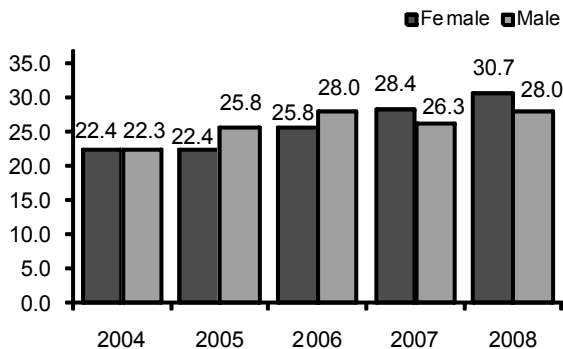
Age adjusted poisoning hspt rate, KY



Number of hospitalizations, KY

Year 2004	934
Year 2005	1,027
Year 2006	1,150
Year 2007	1,183
Year 2008	1,296

Age adjusted poisoning hspt rate by sex, KY



Number of hospitalizations by sex, KY

	Male	Female
Year 2004	447	487
Year 2005	529	498
Year 2006	575	575
Year 2007	546	637
Year 2008	586	710

Hospitalizations charges

	Total	Per Dis.
Year 2004	\$10,017,381	\$10,725
Year 2005	\$11,359,992	\$11,061
Year 2006	\$14,839,740	\$12,904
Year 2007	\$16,363,637	\$13,832
Year 2008	\$18,849,464	\$14,544

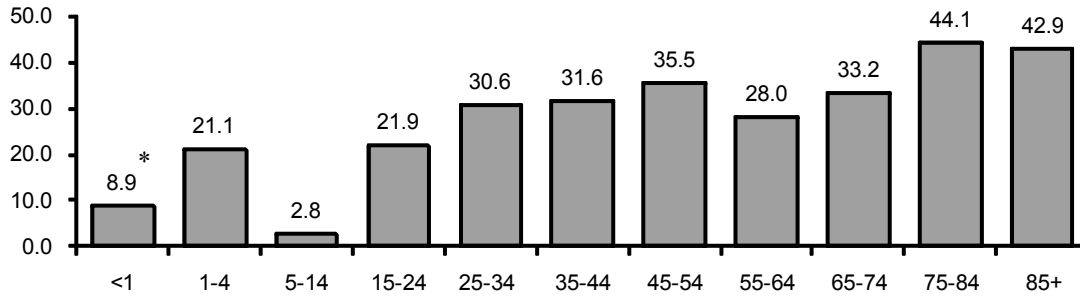
Breakdown by top discharge status ( 2004-2008 )

	Freq	Percent
Routine discharge	4,164	74.49
Home health	333	5.96
Inpatient-other type facility	170	3.04
Left-discontinued cares AMA	241	4.31
Skilled nursing facility	180	3.22
Inpatient-other short-term hospital	102	1.82
Expired/did not recover	46	0.82
Psych hospital/unit	222	3.97
Other	132	2.36

Length of stay (days)

	Total	Per Dis.
Year 2004	2,610	2.79
Year 2005	2,803	2.73
Year 2006	3,399	2.95
Year 2007	3,779	3.19
Year 2008	3,841	2.96

### Age specific poisoning hspt rate. 2004-2008



### Number of poisoning hospitalizations by age group (2004- 2008)

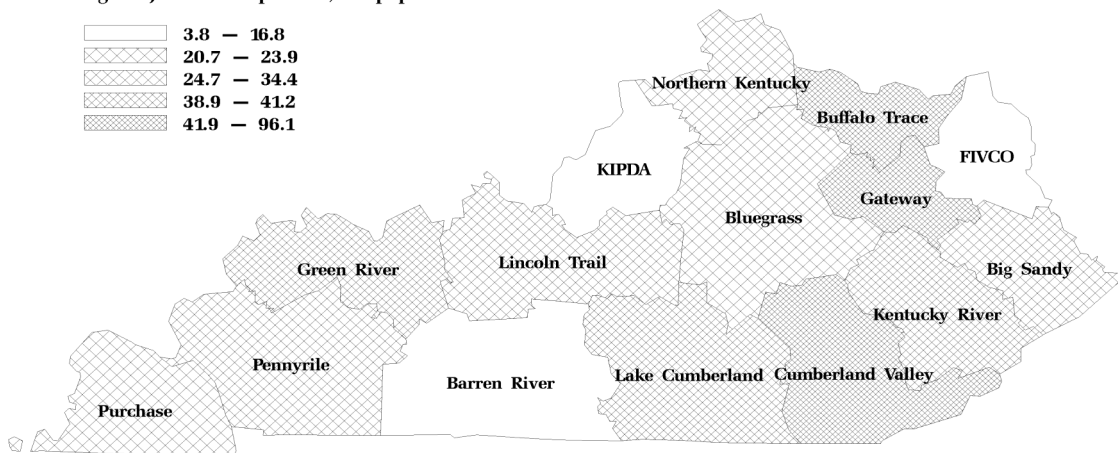
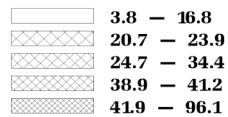
	<1	1-4	5-14	15-24	25-34	35-44	45-54	55-64	65-74	75-84	85+
2004	6	44	17	108	161	178	165	93	68	68	26
2005	5	39	16	119	176	181	203	122	74	61	31
2006	***	51	17	133	188	191	213	139	98	87	30
2007	***	50	15	140	184	202	227	137	117	81	26
2008	7	48	12	114	186	208	291	172	118	104	36

### Detailed breakdown of external cause (2004-2008)

	Frequency	Percent
By analgesics, antipyretics and antirheumatics	1,578	28.24
By tranquilizers	1,024	18.31
By other psychotropic agent	700	12.52
By drugs acting on the central and autonomic nervous system	321	5.75
By other drugs	1,305	23.33
By other solids, liquids, gases, and vapors	372	6.66
By other sedatives and hypnotics	227	4.06
Other	63	1.12

### Poisoning hospitalization rate by ADD for KY residents, 2004—08

Age adjusted rate per 100,000 population



\* Rates are based on cases less than 20. \*\*\* All cells less than 5 are suppressed.

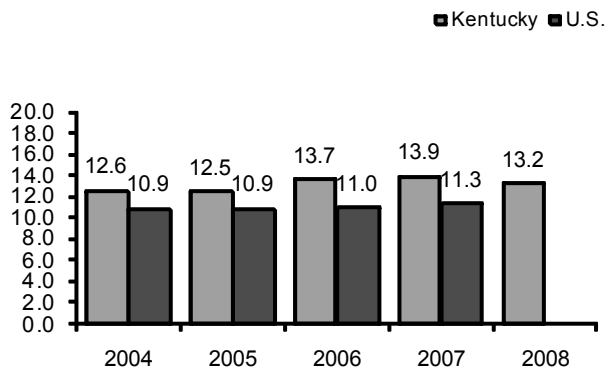
# Self-harm Violence: Suicide



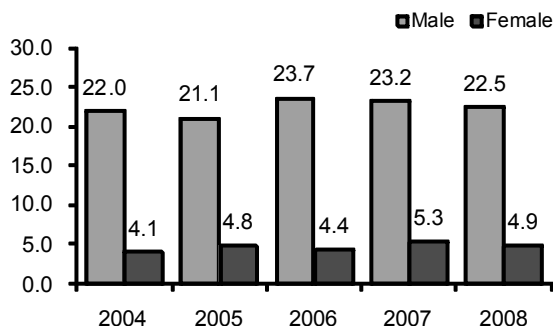
**Goals and Objectives:** According to the Mid-Decade Review of Healthy Kentuckians 2010, there is no specific objective to reduce suicides.

**Definition of Suicide:** ICD10-code: X60-X84, Y870

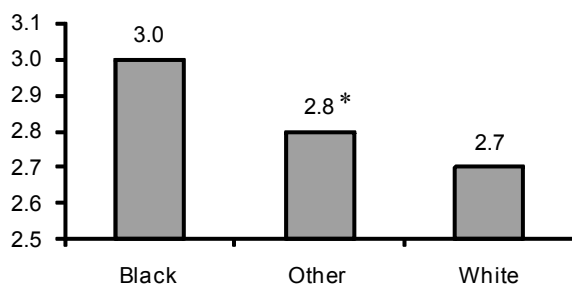
**Age adjusted suicide rate by year, KY vs US**



**Age adjusted suicide rate by sex, KY**



**Age adjusted suicide rate by race, KY, 2004-2008**



**Number of suicides, KY**

Year 2004	535
Year 2005	534
Year 2006	584
Year 2007	599
Year 2008	579

**Number of suicides by sex, KY**

	Male	Female
Year 2004	445	90
Year 2005	430	104
Year 2006	485	99
Year 2007	484	115
Year 2008	468	110

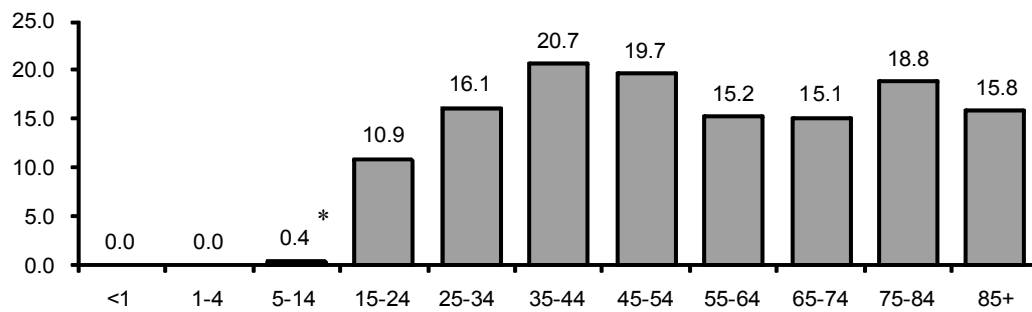
**Number of suicides by race, KY**

	White	Black	Other
<b>Non Hispanic</b>			
Year 2004	514	10	5
Year 2005	505	19	4
Year 2006	555	18	2
Year 2007	557	25	8
Year 2008	550	19	6
<b>Hispanic</b>			
Year 2004	6	0	0
Year 2005	6	0	0
Year 2006	6	0	0
Year 2007	9	0	0
Year 2008	3	0	1

**Total YPLL due to suicides**

Year 2004	16,188
Year 2005	16,076
Year 2006	17,448
Year 2007	18,183
Year 2008	15,984

### Age specific suicide rate. 2004-2008



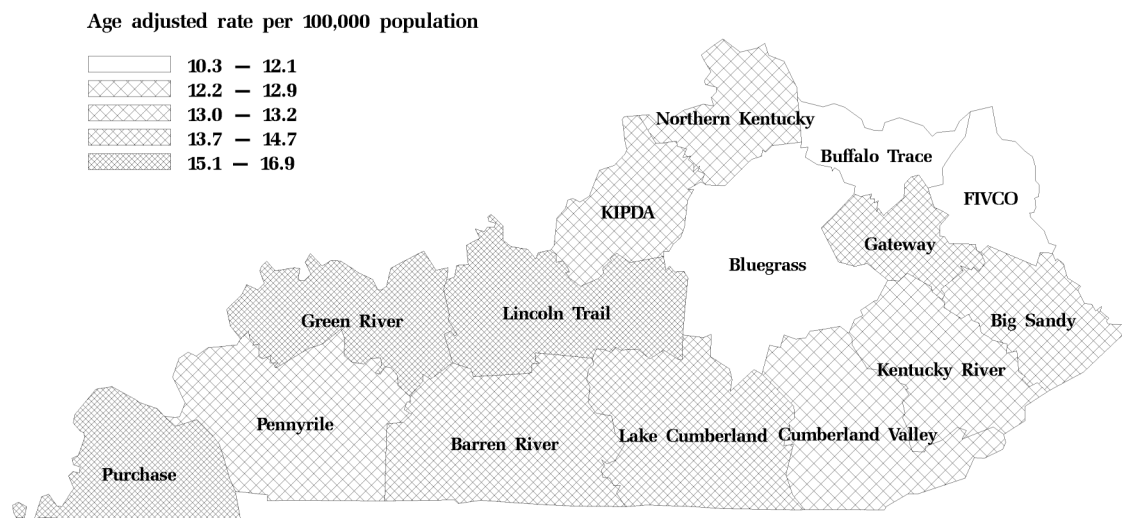
### Number of suicides by age group (2004- 2008)

	<1	1-4	5-14	15-24	25-34	35-44	45-54	55-64	65-74	75-84	85+
2004	0	0	1	69	90	114	112	70	40	29	9
2005	0	0	0	57	95	126	112	65	39	30	10
2006	0	0	3	63	92	145	116	74	45	36	10
2007	0	0	4	65	110	131	130	72	44	32	11
2008	0	0	3	52	84	113	140	80	48	44	15

### Detailed breakdown of external cause (2004-2008)

	Frequency	Percent
Firearms	1,835	64.8 %
Suffocation/Hanging	514	18.2 %
Poisoning by drugs, alcohol and other substances	365	12.9 %
Suicide by other means	117	4.1 %

### Suicide rate by ADD for Kentucky residents, 2004–08



\* Rates are based on cases less than 20.

# Self-harm Violence: Suicide Attempt Hospitalizations



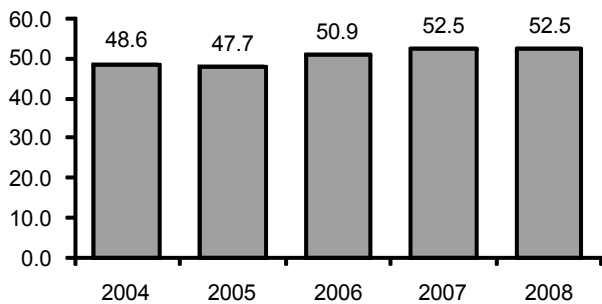
## Goals and Objectives:

There is no specified objective to reduce suicide attempt hospitalizations according to the Mid-Decade Review of Healthy Kentuckians 2010.

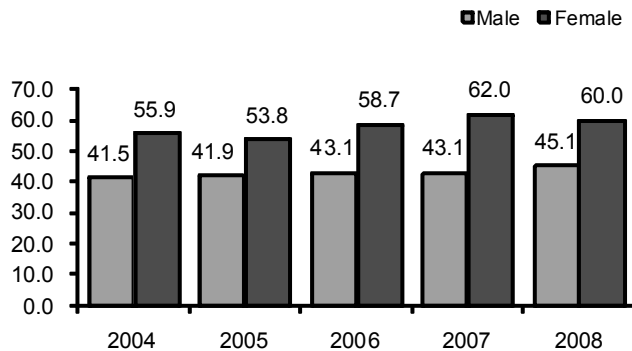
## Definition of Suicide Attempt Hospitalizations:

E-code: 950-959

Age adjusted hspt rate, KY



Age adjusted hspt rate by sex, KY



Number of hospitalizations, KY

Year 2004	2,018
Year 2005	1,991
Year 2006	2,123
Year 2007	2,196
Year 2008	2,206

Number of hospitalizations by sex, KY

	Male	Female
Year 2004	859	1,159
Year 2005	872	1,119
Year 2006	897	1,226
Year 2007	899	1,297
Year 2008	937	1,269

Hospitalizations charges

	Total	Per Dis.
Year 2004	\$22,954,770	\$11,375
Year 2005	\$25,479,715	\$12,797
Year 2006	\$26,562,560	\$12,511
Year 2007	\$30,202,822	\$13,754
Year 2008	\$32,307,590	\$14,645

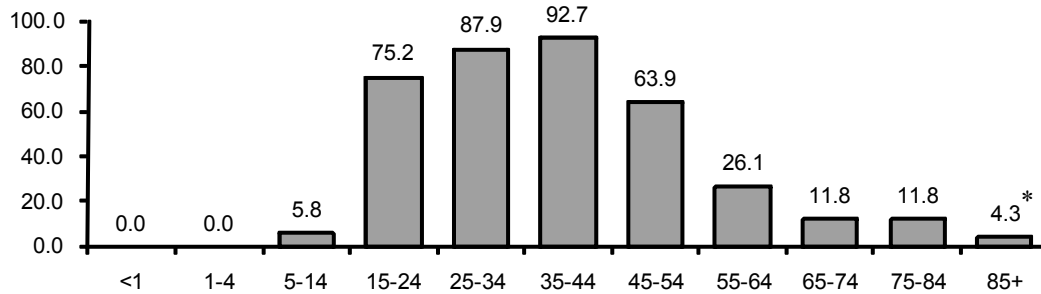
Length of stay (days)

	Total	Per Dis.
Year 2004	6,069	3.01
Year 2005	6,190	3.11
Year 2006	6,280	2.96
Year 2007	6,946	3.16
Year 2008	7,081	3.21

Breakdown by top discharge status ( 2004-2008 )

	Freq	Percent
Routine discharge	5,375	51.03
To psych hospital or psych unit	2,087	19.81
Inpatient-other type facility	1,756	16.67
Inpatient-other short-term hospital	451	4.28
Left-discontinued cares AMA	337	3.20
Home health	82	0.78
Expired/did not recover	165	1.57
Other	281	2.67

### Age specific suicide attempt hspt rate. 2004-2008



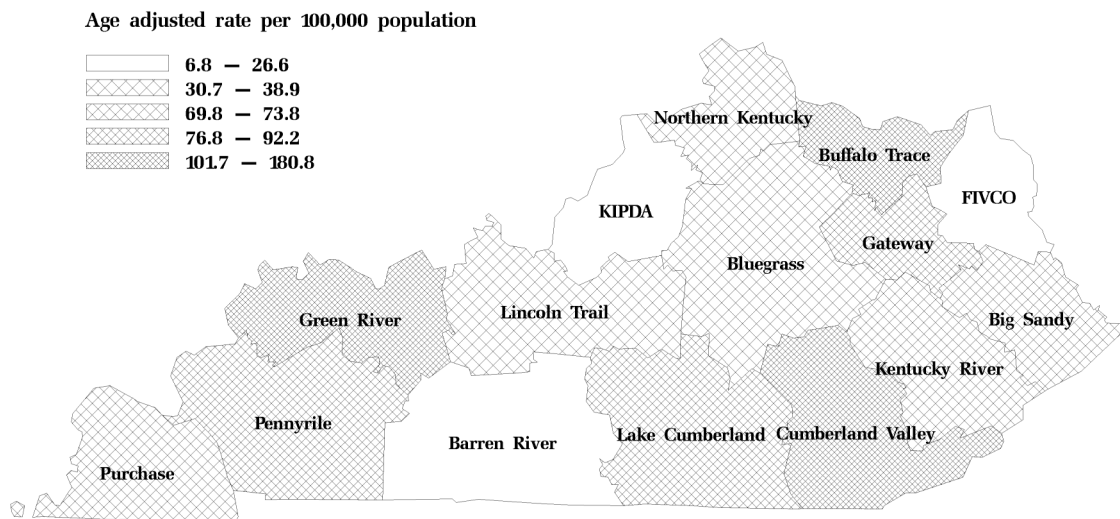
### Number of suicide attempt hospitalizations by age group (2004-2008)

	<1	1-4	5-14	15-24	25-34	35-44	45-54	55-64	65-74	75-84	85+
2004	0	0	43	467	484	528	358	89	28	19	***
2005	0	0	35	408	514	529	325	122	31	24	***
2006	0	0	23	420	535	567	415	115	31	15	***
2007	0	0	28	408	512	622	432	139	31	23	***
2008	0	0	30	401	526	568	448	152	48	26	7

### Detailed breakdown of external cause (2004-2008)

	Frequency	Percent
Poisoning by solid or liquid substances	9,725	92.32
Cutting and piercing	325	3.09
Firearms	277	2.63
Other means	207	1.97

### Suicide attempt hospitalization rate by ADD for Kentucky residents, 2004–08



\* Rates are based on cases less than 20. \*\*\* All cells less than 5 are suppressed.

# Unintentional Suffocation Fatalities

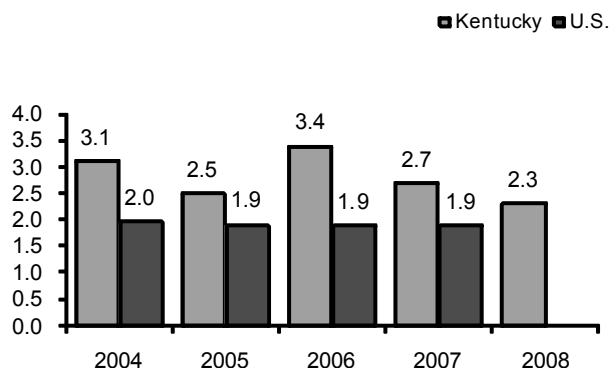


## Goals and Objectives:

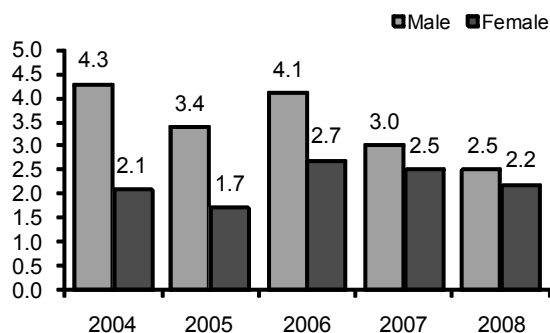
According to the Mid-Decade Review of Healthy Kentuckians 2010, the objective is to reduce deaths caused by suffocation to 4.4 per 100,000 residents.

**Definition of Fatal Unintentional Suffocation:** ICD10-code: W75-W84

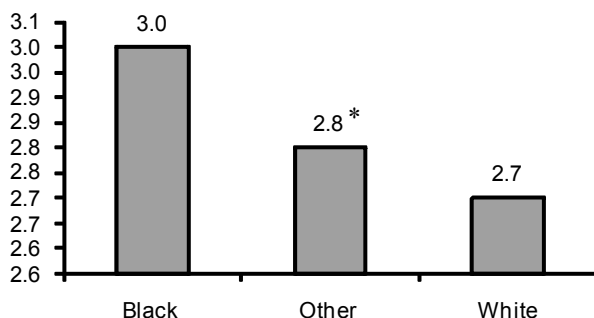
Age adjusted fatality rate, KY vs US



Age adjusted fatality rate by sex, KY



Age adjusted fatality rate by race, KY,  
2004-2008



Number of fatalities , KY

Year 2004	124
Year 2005	100
Year 2006	144
Year 2007	119
Year 2008	106

Number of fatalities by sex, KY

	Male	Female
Year 2004	74	50
Year 2005	59	41
Year 2006	76	68
Year 2007	55	64
Year 2008	49	57

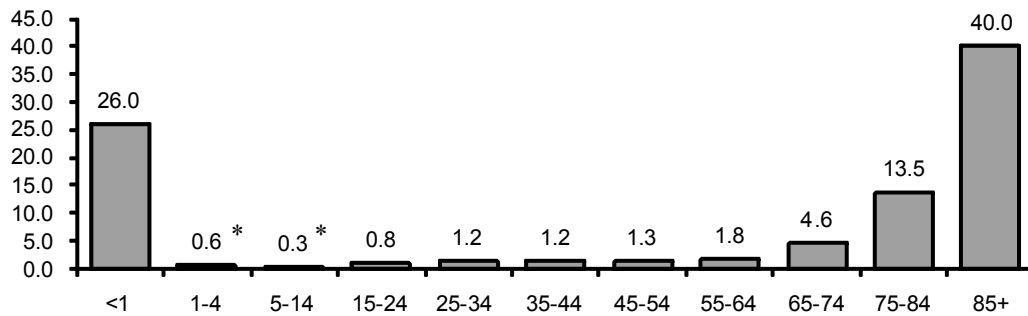
Number of fatalities by race, KY

	White	Black	Other
Non Hispanic			
Year 2004	108	11	3
Year 2005	94	4	1
Year 2006	129	13	0
Year 2007	109	8	2
Year 2008	99	7	0
Hispanic			
Year 2004	2	0	0
Year 2005	1	0	0
Year 2006	2	0	0
Year 2007	0	0	0
Year 2008	0	0	0

Total YPLL due to fatalities

Year 2004	2,935
Year 2005	2,408
Year 2006	3,294
Year 2007	2,098
Year 2008	1,975

### Age specific suffocation related fatality rate. 2004-2008



Number of fatalities by age group (2004- 2008)

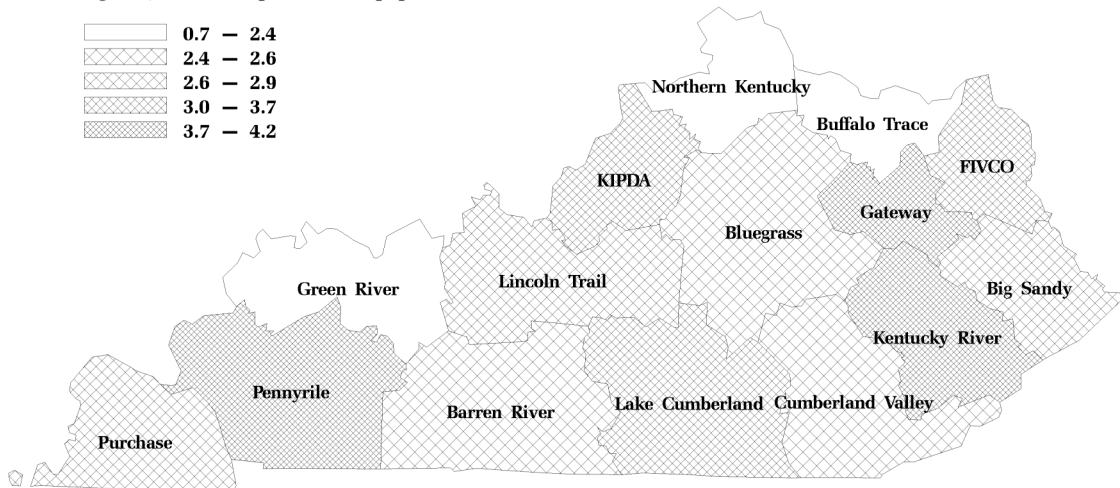
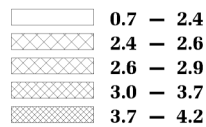
	<1	1-4	5-14	15-24	25-34	35-44	45-54	55-64	65-74	75-84	85+
2004	17	2	1	7	11	5	8	9	8	30	26
2005	13	2	3	4	6	7	8	5	7	20	25
2006	20	2	2	4	9	12	11	4	20	30	30
2007	10	0	3	5	5	8	3	15	17	23	30
2008	13	1	0	1	5	4	11	9	14	20	28

Detailed breakdown of external cause (2004-2008)

	Frequency	Percent
Inhalation and ingestion of other objects	362	61.05
Unspecified threats to breathing	78	13.15
Accidental suffocation and strangulation in bed	48	8.09
Inhalation and ingestion of food	37	6.24
Other	68	11.47

### Fatality rate due to suffocation by ADD for Kentucky residents, 2004–08

Age adjusted rate per 100,000 population



\* Rates are based on cases less than 20.



# Unintentional Suffocation: Hospitalizations



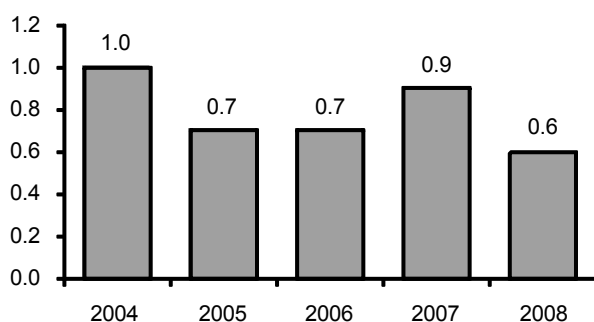
## Goals and Objectives:

There is no specified objective to reduce unintentional suffocation related hospitalizations according to the Mid-Decade Review of Healthy Kentuckians 2010.

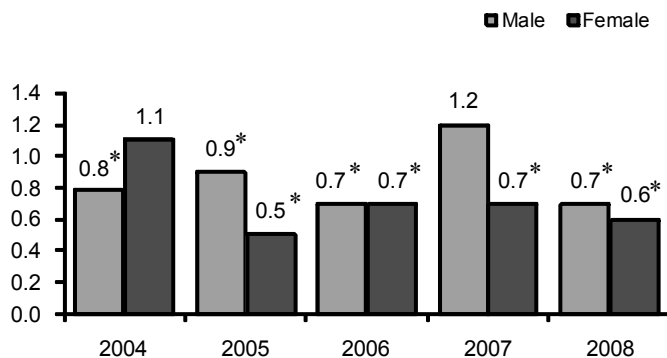
## Definition of Unintentional Suffocation Hospitalizations:

E-code: 911-913

Age adjusted hspt rate, KY



Age adjusted hspt rate by sex, KY



Number of hospitalizations, KY

Year 2004	41
Year 2005	29
Year 2006	30
Year 2007	41
Year 2008	26

Number of hospitalizations by sex, KY

	Male	Female
Year 2004	16	25
Year 2005	17	12
Year 2006	13	17
Year 2007	24	17
Year 2008	13	13

Hospitalizations charges

	Total	Per Dis.
Year 2004	\$902,949	\$22,023
Year 2005	\$379,838	\$13,098
Year 2006	\$922,252	\$30,742
Year 2007	\$505,306	\$12,325
Year 2008	\$902,949	\$19,010

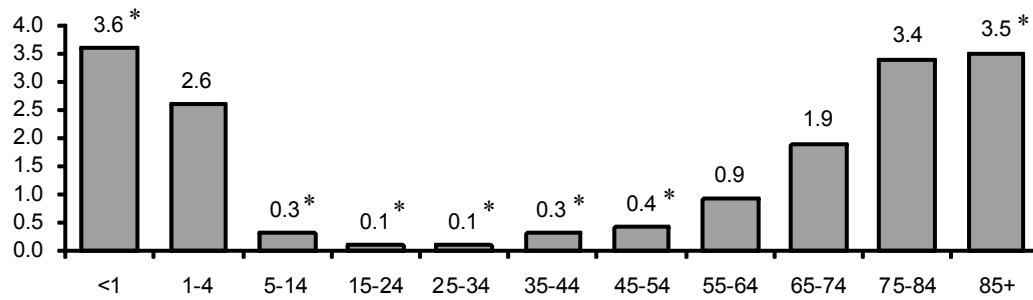
Breakdown by top discharge status ( 2004-2008 )

	Freq	Percent
Routine discharge	87	52.10
Skilled nursing facility	28	16.77
Home health	13	7.78
Expired/did not recover	17	10.18
Inpatient-other short term	6	3.59
Intermediate care facility	6	3.59
Other	10	5.99

Length of stay (days)

	Total	Per Dis.
Year 2004	218	5.3
Year 2005	103	3.6
Year 2006	123	4.1
Year 2007	125	3.0
Year 2008	87	3.3

### Age specific suffocation-related hspt rate. 2004-2008



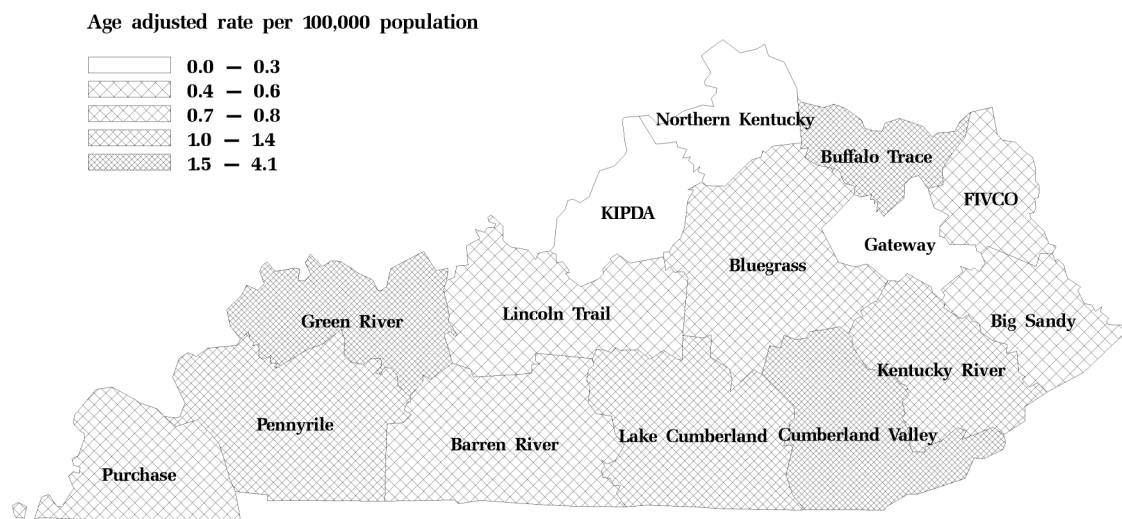
### Number of hospitalizations by age group (2004- 2008)

	<1	1-4	5-14	15-24	25-34	35-44	45-54	55-64	65-74	75-84	85+
2004	***	7	***	***	***	***	***	7	***	7	***
2005	***	***	***	***	***	***	***	***	7	5	***
2006	***	6	***	***	0	***	***	***	***	8	***
2007	***	7	***	***	0	0	***	5	9	7	***
2008	***	6	***	0	***	***	0	***	***	***	***

### Detailed breakdown of external cause (2004-2008)

	Frequency	Percent
Inhalation/ingestion of food	85	50.90
Inhalation/ingestion of other object	74	44.31
Accidental mechanical suffocation	8	4.79

### Hospitalization rate due to suffocation by ADD for KY residents, 2004–08



\* Rates are based on cases less than 20. \*\*\* All cells less than 5 are suppressed.



