

# *KIPRC Community Data Summit*

Meghan Steel & Madison Liford

---

## Kentucky Drug Overdose Deaths in 2020

April 29, 2021



# Goals

- Prepare for drug overdose prevention during future extended emergency situations
- Inform the development and direction of programs operating in the wake of the Covid-19 pandemic
- Connect community leaders in drug overdose prevention with data that can help guide practice

# Objectives

- Recognize how the unique circumstances of 2020 influenced Kentucky's drug overdose deaths
- Understand the drug types and demographics involved in drug overdose deaths in 2020
- Know what types of data are available through KIPRC and how to request that data

# Introduction

Meghan Steel

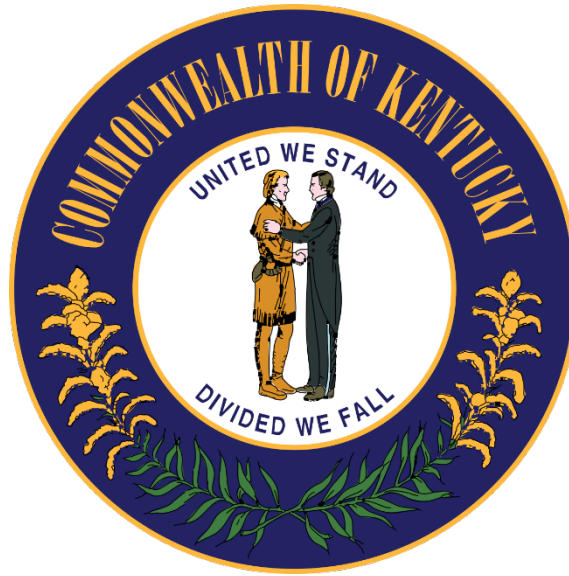
- KIPRC Epidemiologist
- Drug Overdose Surveillance and Prevention



Madison Liford

- KIPRC Epidemiologist
- Drug Overdose Surveillance, Occupational Injury

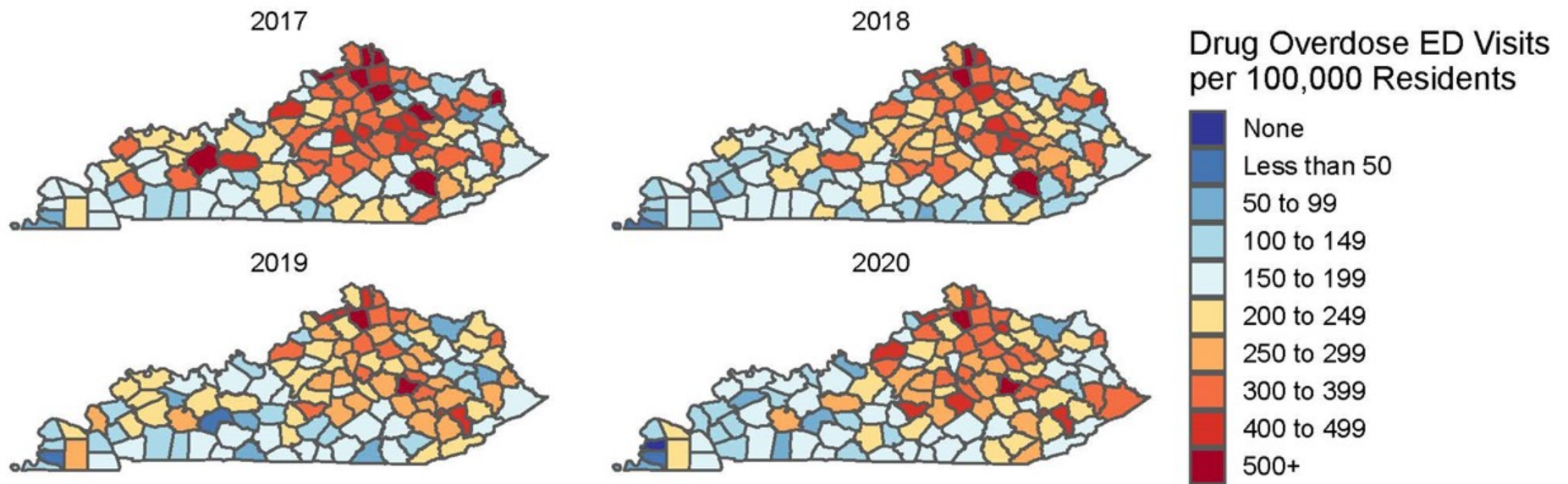




# OVERVIEW OF DRUG OVERDOSES IN KENTUCKY

Figure 1

## Yearly Rates of Emergency Department (ED) Visits for Drug Overdoses Among Kentucky Residents, 2017–2020



Data source: Kentucky Outpatient Services Database, Office of Health Data and Analytics, Cabinet for Health and Family Services.

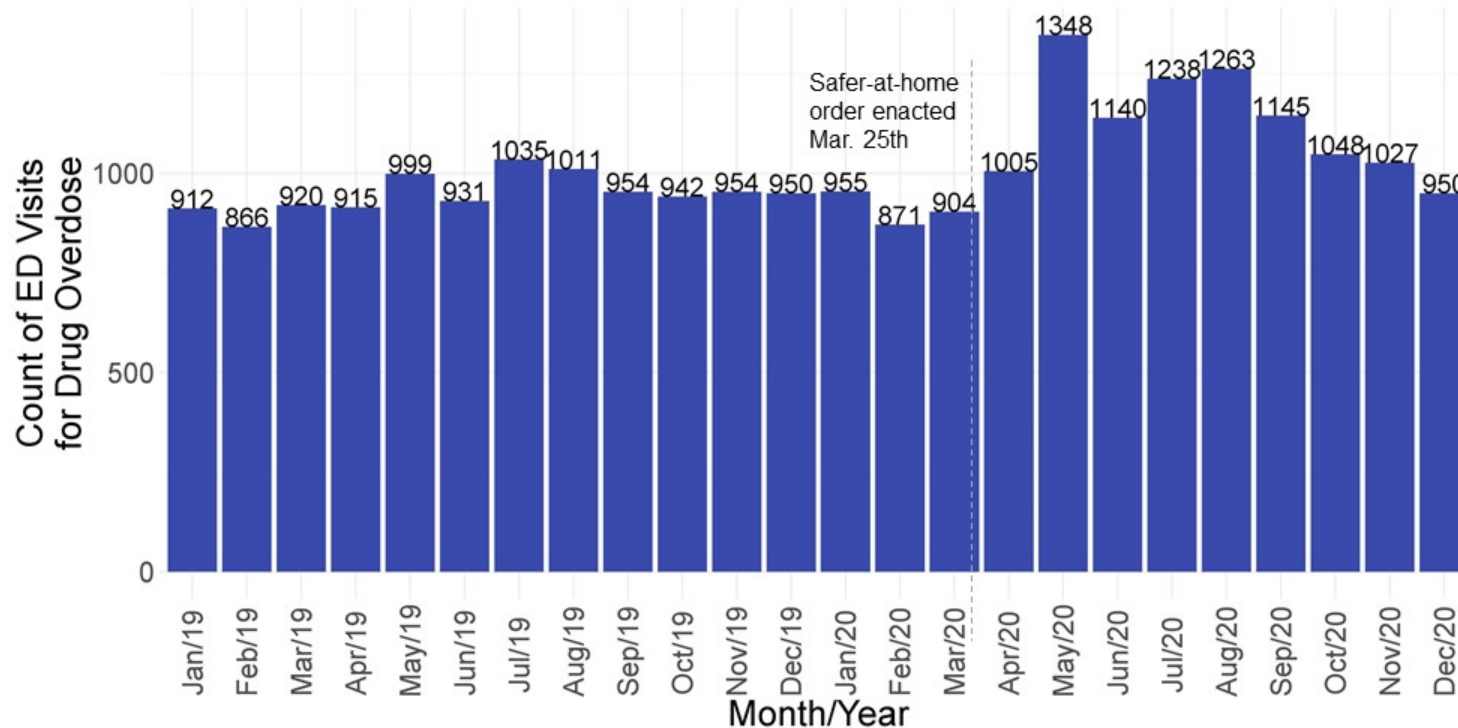
Data are provisional and subject to change.

Produced by the Kentucky Injury Prevention and Research Center as bona fide agent for the Kentucky Department for Public Health, April 2021.



Figure 2

## Monthly Counts of Emergency Department Visits for Nonfatal Drug Overdoses Among Kentucky Residents, 2019–2020



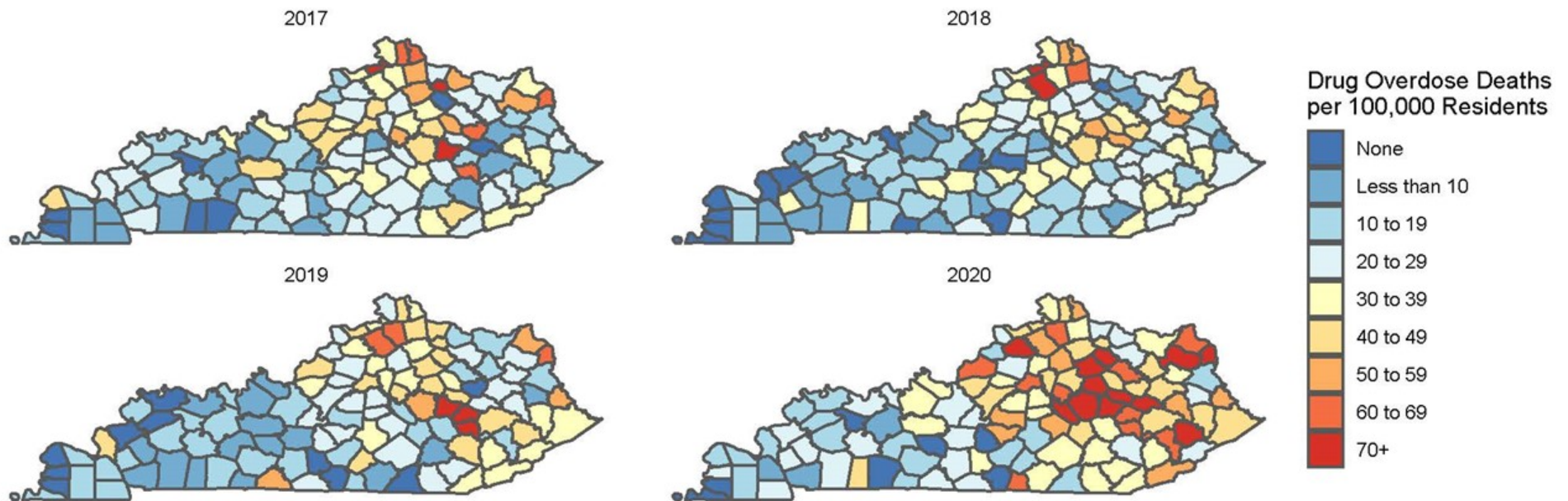
Data source: Kentucky Outpatient Services Database, Office of Health Data and Analytics, Cabinet for Health and Family Services.

Data are provisional and subject to change.

Produced by the Kentucky Injury Prevention and Research Center as bona fide agent for the Kentucky Department for Public Health, April 2021.

Figure 3

## Yearly Rates of Drug Overdose Deaths Among Kentucky Residents, 2017–2020



Data source: Kentucky Death Certificate Database, Kentucky Office of Vital Statistics, Cabinet for Health and Family Services.

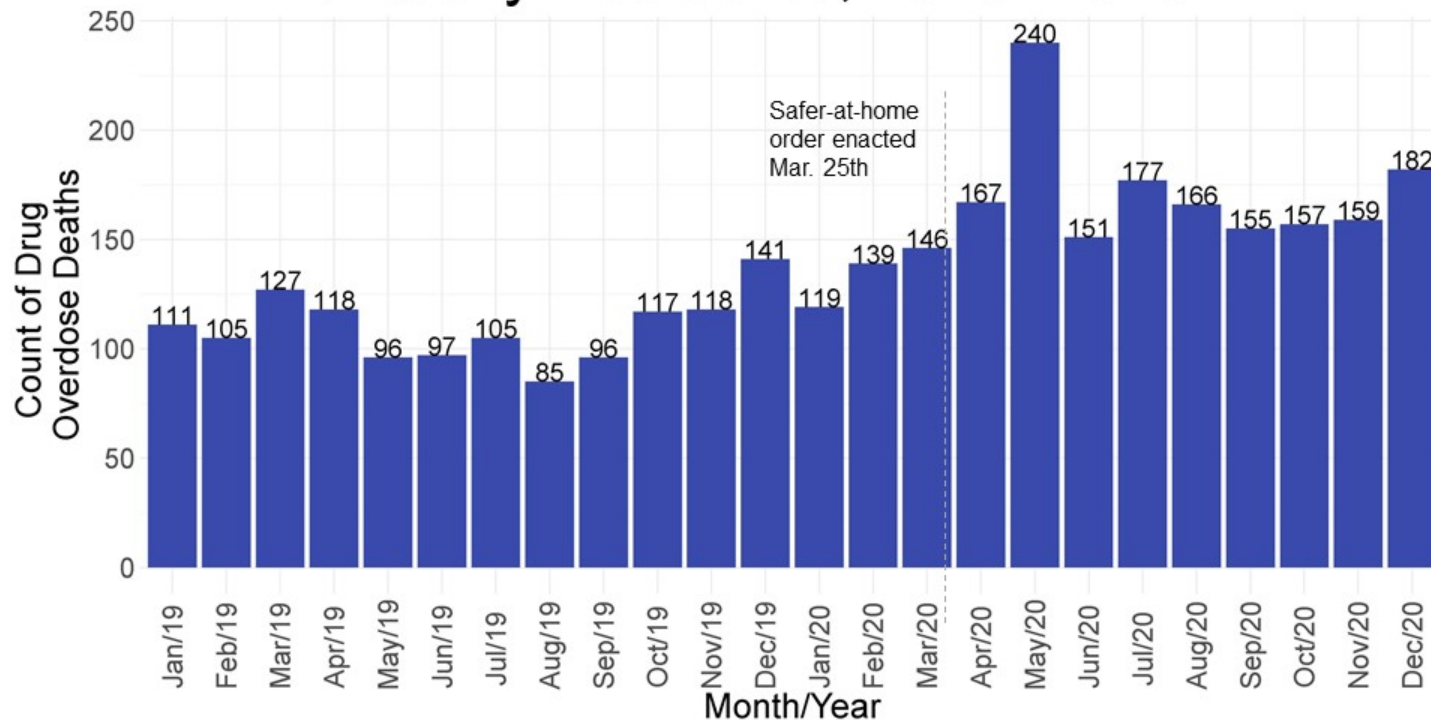
Data are provisional and subject to change.

Produced by the Kentucky Injury Prevention and Research Center as bona fide agent for the Kentucky Department for Public Health, April 2021.



Figure 4

## Monthly Counts of Drug Overdose Deaths Among Kentucky Residents, 2019–2020



Data source: Kentucky Death Certificate Database, Kentucky Office of Vital Statistics, Cabinet for Health and Family Services.

Data are provisional and subject to change.

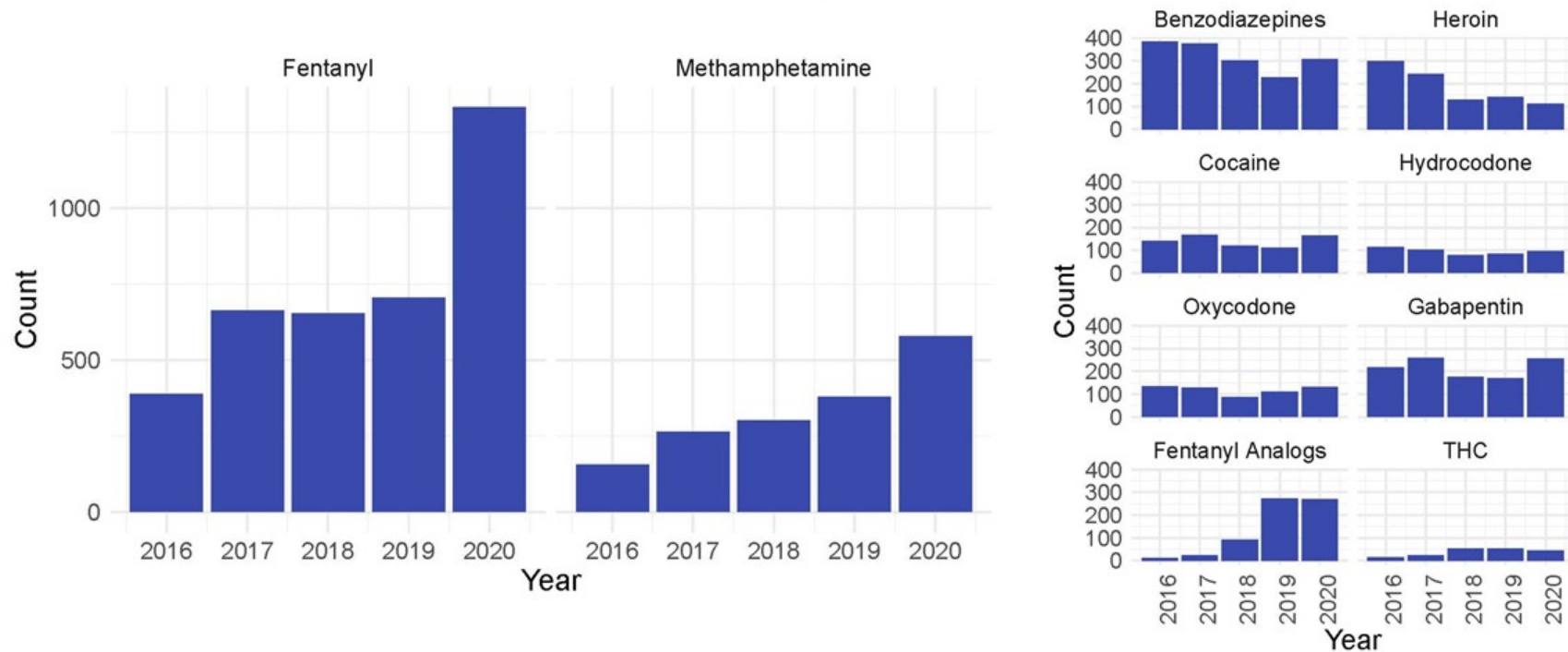
Produced by the Kentucky Injury Prevention and Research Center as bona fide agent for the Kentucky Department for Public Health, April 2021.



# DRUG TYPES INVOLVED IN KENTUCKY'S DRUG OVERDOSE DEATHS IN 2020

Figure 5

## Yearly Counts of Drug Types Involved in Drug Overdose Deaths Among Kentucky Residents, 2016–2020



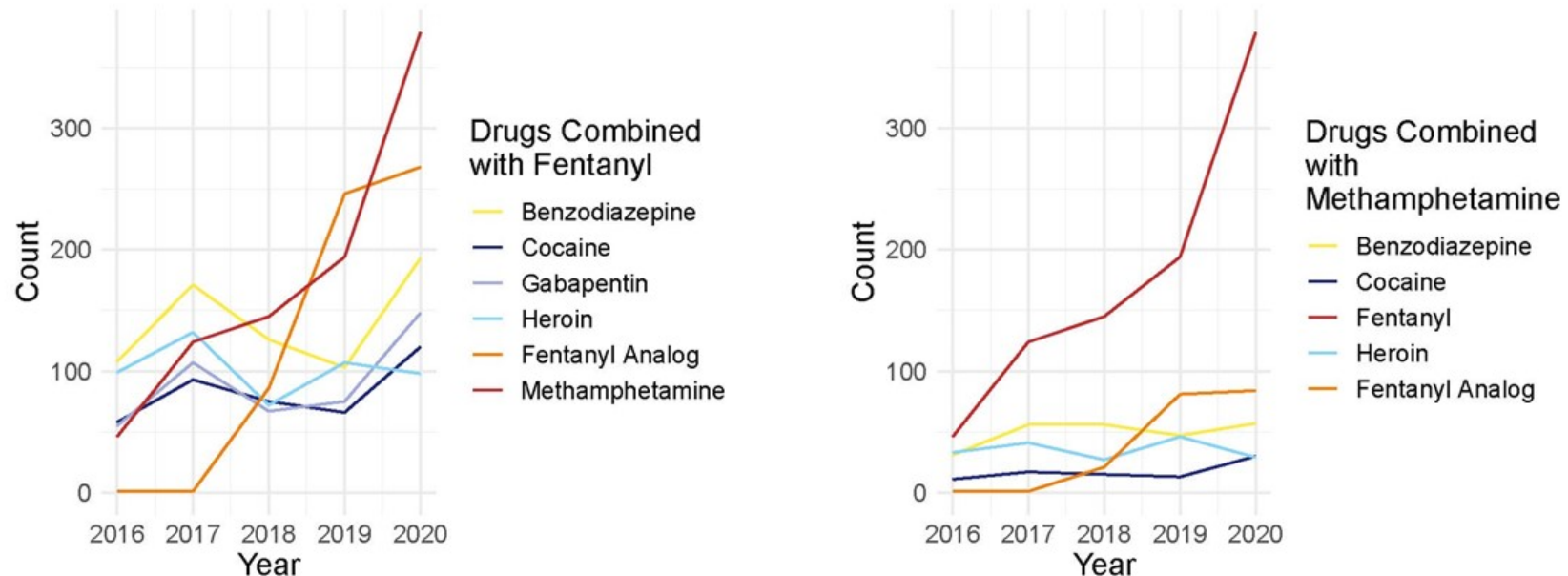
Data source: Kentucky Death Certificate Database, Kentucky Office of Vital Statistics, Cabinet for Health and Family Services.

Data are provisional and subject to change.

Produced by the Kentucky Injury Prevention and Research Center as bona fide agent for the Kentucky Department for Public Health, April 2021.

Figure 6

## Yearly Counts of Drug Overdose Deaths Involving Fentanyl and Methamphetamine with the Presence of at Least One Additional Drug, 2016–2020



Data source: Kentucky Death Certificate Database, Kentucky Office of Vital Statistics, Cabinet for Health and Family Services.

Data are provisional and subject to change.

Produced by the Kentucky Injury Prevention and Research Center as bona fide agent for the Kentucky Department for Public Health, April 2021.

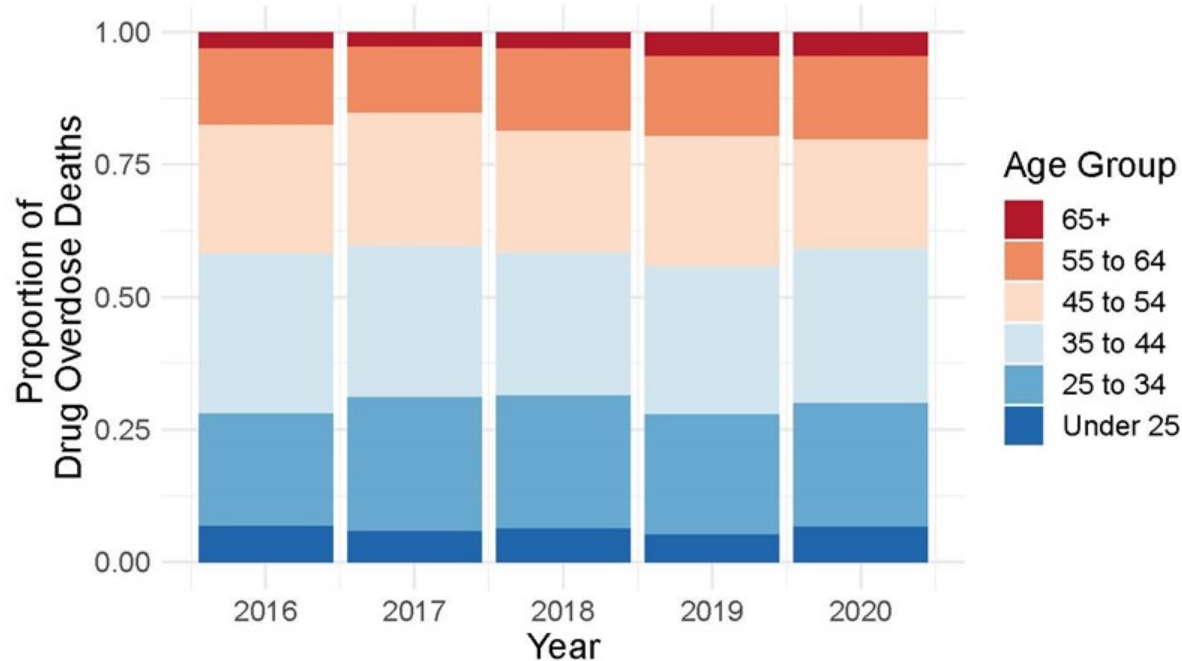


# AGE AND DRUG OVERDOSE DEATHS IN KENTUCKY



Figure 7

## Yearly Proportion of All Drug Overdose Deaths Among Kentucky Residents by Age Group, 2016-2020



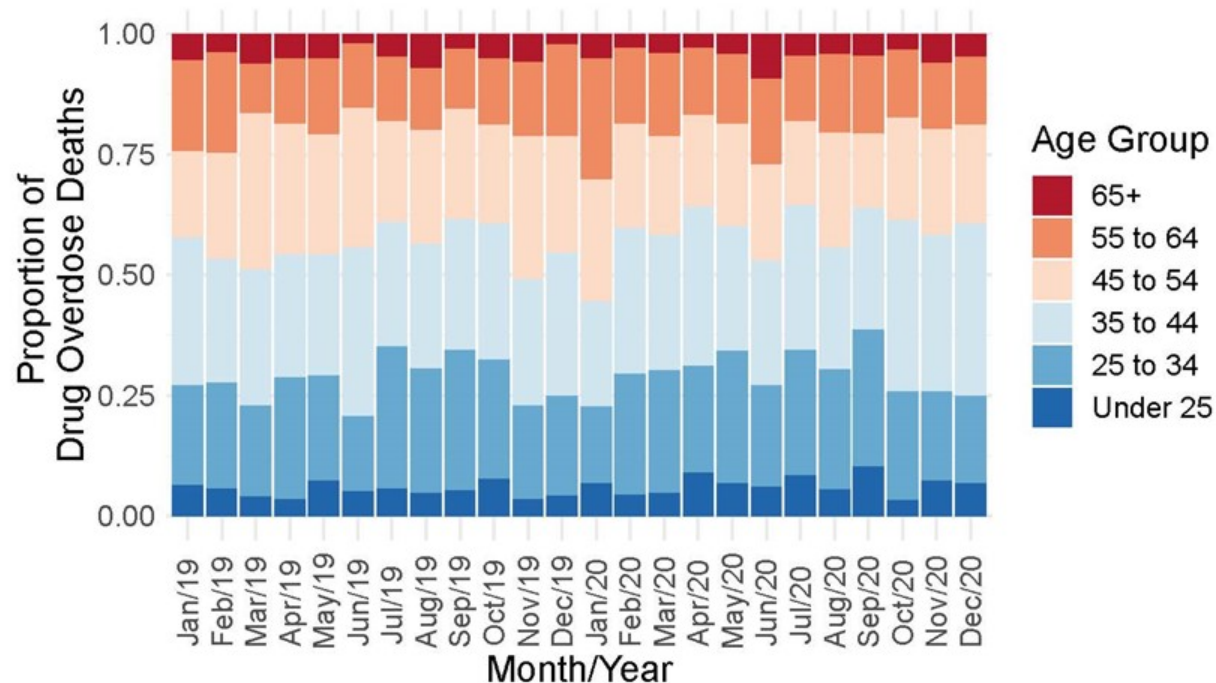
Data source: Kentucky Death Certificate Database, Kentucky Office of Vital Statistics, Cabinet for Health and Family Services.

Data are provisional and subject to change.

Produced by the Kentucky Injury Prevention and Research Center as bona fide agent for the Kentucky Department for Public Health, April 2021.

Figure 8

## Monthly Proportion of All Drug Overdose Deaths Among Kentucky Residents by Age Group, 2019-2020



Data source: Kentucky Death Certificate Database, Kentucky Office of Vital Statistics, Cabinet for Health and Family Services.

Data are provisional and subject to change.

Produced by the Kentucky Injury Prevention and Research Center as bona fide agent for the Kentucky Department for Public Health, April 2021.

# Summary

- Drug overdose trends in 2020 diverged significantly from those in previous years.
  - The greatest spike in deaths occurred in May 2020.
- Increase in deaths driven by involvement of fentanyl followed by methamphetamine and by the combination of both drugs.
- Some increase in deaths among the youngest and the oldest; most deaths still occur among middle-aged individuals.

# Publications & Reports



Kentucky Injury Prevention  
and Research Center

About

Injury Focus Areas

Programs

Resources Library

Publications

News

## Resources Library

<https://kiprc.uky.edu/resources-library>



Kentucky Public Health  
Prevent. Promote. Protect.

# Creating Custom Reports

- How to request custom reports from KIPRC:
  - Email [kiprc.data.request@L.uky.edu](mailto:kiprc.data.request@L.uky.edu)
  - Include
    - Your name & organization
    - Indicator of interest (e.g., nonfatal drug overdose, births involving NAS)
    - Time period (e.g., quarterly counts for 2020)
    - Region/Counties



# Definitions

Indicator	ICD-10 Code
Nonfatal Drug Overdose	T36–T50, initial encounters
Drug Overdose Death	An underlying cause of death code of X40–X44, X60–X64, X85, or Y10–Y14.
Drug Type	
Fentanyl	A drug overdose death including a supplemental cause of death code of T40.4 and a textual mention of fentanyl
Methamphetamine	A drug overdose death including a supplemental cause of death code of T43.6 and a textual mention of methamphetamine
Benzodiazepines	A drug overdose death including a supplemental cause of death code of T42.4
Heroin	A drug overdose death including a supplemental cause of death code of T40.1

Drug Type	
Cocaine	A drug overdose death including a supplemental cause of death code of T40.5
Hydrocodone	A drug overdose death including a supplemental cause of death code of T40.2 or T40.6 and a textual mention of hydrocodone
Oxycodone	A drug overdose death including a supplemental cause of death code of T40.2 or T40.6 and a textual mention of oxycodone
Gabapentin	A drug overdose death including a supplemental cause of death code of T42.6 and a textual mention of gabapentin
Fentanyl Analogs	A drug overdose death including a supplemental cause of death code of T40.4 and a textual mention of a fentanyl analog*
THC	A drug overdose death including a supplemental cause of death code of T40.7 and a textual mention of THC

# Acknowledgments

Thank you, KIPRC drug overdose surveillance and prevention teams.

Thank you, colleagues at Kentucky Department for Public Health.

# Evaluation

- Please complete the evaluation survey:
  - [https://uky.az1.qualtrics.com/jfe/form/SV\\_9nkLPfRylwf2tH8](https://uky.az1.qualtrics.com/jfe/form/SV_9nkLPfRylwf2tH8)
  - Or scan the QR code



# Return to Slides

- [Figure 1:](#) ED Visit Map, 2016–2020
- [Figure 2:](#) Monthly ED Visits, 2019–2020
- [Figure 3:](#) Mortality Map, 2016–2020
- [Figure 4:](#) Monthly Deaths, 2019–2020
- [Figure 5:](#) Deaths by Drug Type, 2016–2020
- [Figure 6:](#) Meth and Fentanyl Deaths with Polypharmacy, 2016–2020
- [Figure 7:](#) Yearly Deaths by Age Group, 2016–2020
- [Figure 8:](#) Monthly Deaths by Age Group, 2019–2020
- [Creating Custom Reports](#)

# Disclaimers

Produced by the Kentucky Injury Prevention and Research Center as bona fide agent for the Kentucky Department for Public Health, April 2021. This report was supported by Cooperative Agreement Number NU17CE924971-02-01, funded by the Centers for Disease Control and Prevention. Its contents are solely the responsibility of the authors and do not necessarily represent the official views of the Centers for Disease Control and Prevention or the U.S. Department of Health and Human Services.



**Kentucky Public Health**  
Prevent. Promote. Protect.



# Additional Questions

- Contact Meghan Steel
  - [meghansteel@uky.edu](mailto:meghansteel@uky.edu)
- Visit the KIPRC website
  - <https://kiprc.uky.edu>