

# KENTUCKY INJURY INDICATORS



## 2017

**KENTUCKY VIOLENCE AND INJURY PREVENTION PROJECT (KVIPP)**

**COOPERATIVE AGREEMENT NO. 5NU17CE924846**

**KENTUCKY INJURY PREVENTION AND RESEARCH CENTER**

**FEBRUARY 2021**



This page is intentionally blank.

## **ACKNOWLEDGMENTS**

This report is funded through the Core State Violence and Injury Prevention Program by the National Center on Injury Prevention and Control and the Centers for Disease Control and Prevention, Agreement No. 5NU17CE924846.

### **Prepared by**

**Lara Daniels  
Ashley M. Bush**

### **Released by**

Kentucky Injury Prevention and Research Center  
University of Kentucky College of Public Health  
Lexington, Kentucky 40504

Suggested citation: Kentucky Injury Indicators, 2017 Report. Lexington (KY): University of Kentucky, Kentucky Injury Prevention and Research Center; 2021.

This page is intentionally blank.

## TABLE OF CONTENTS

Abbreviations .....	1
Executive Summary .....	2
Data Sources and Methods.....	3
<b>10 Leading Causes of Injury by Age Group and Intent</b>	
Definitions for Injury Data Matrices .....	5
Fatalities .....	6
Inpatient Hospitalizations .....	7
Emergency Department Visits.....	8
<b>Injury Indicators</b>	
All Injuries.....	9
Unintentional Falls.....	11
Unintentional Fire-Related Injuries.....	13
Firearm-Related Injuries.....	15
Homicide and Assault .....	17
Unintentional Motor Vehicle Traffic Crashes .....	19
Non-Drug Poisoning .....	21
Drug Poisoning .....	23
Suicide and Self-Injury .....	25
Traumatic Brain Injury .....	27

## Abbreviations

CDC	Centers for Disease Control and Prevention
CSTE	Council of State and Territorial Epidemiologists
ED	emergency department
ICD	International Classification of Diseases
ICD-CM	International Classification of Diseases, Clinical Modifications
KIPRC	Kentucky Injury Prevention and Research Center
MV	motor vehicle
ATV	all-terrain vehicle
PCR	police collision report
TBI	traumatic brain injury

## Executive Summary

Kentucky's overall age-adjusted injury mortality rate was 91.3 per 100,000 Kentucky resident population in 2017. The male and female age-adjusted rates were 126.1 and 58.2, respectively.

The age-adjusted rate for injury-related inpatient hospitalizations per 100,000 population was 501.4 per 100,000 Kentucky resident population in 2017. The male and female age-adjusted rates were 491.9 and 493.4, respectively.

The age-adjusted rate for injury-related emergency department visit discharges per 100,000 Kentucky resident population was 11,747.2 in 2017. The male and female age-adjusted rates were 12,061.5 and 11,366.5, respectively.

### **Fatalities**

There were 4,083 injury fatalities among Kentucky residents in 2017. The leading mechanisms of injury fatality for Kentucky residents in 2017 were *drug poisonings* (1,548), *motor vehicle traffic crashes* (697), and *firearms* (683). Ninety-three percent of the poisonings were unintentional drug overdoses involving prescription medications and/or illicit drugs. The leading injury mechanisms among intentional deaths (suicides and homicides) were *firearms* (64%) and *suffocation/hanging* (18%).

There were 954 fatalities from traumatic brain injuries (TBI), where TBI was reported as a cause of death on the death certificate alone or in combination with other injuries or conditions. The majority of the TBI-related fatalities were either intentional (51%) or unintentional (49%).

### **Inpatient Hospitalizations**

There were 24,198 injury-related inpatient hospitalization encounters among Kentucky residents in 2017. The leading mechanisms of injury-related inpatient hospitalizations were *falls* (11,668), *drug poisonings* (4,207), and *motor vehicle traffic crashes* (2,699). The majority of unintentional fall-related hospitalizations occurred among Kentucky residents age 55 years and older (88%). Of the 4,390 drug poisonings, 2,475 (59%) were unintentional and 1,613 (38%) were self-directed/inflicted. The leading mechanism of intentional injury-related inpatient hospitalizations was *drug poisoning* (63%).

TBI (either TBI alone or in combination with other injuries) accounted for 2,994 hospitalizations. The majority of the TBI-related inpatient hospitalizations were unintentional (86%). Falls were the leading mechanism of TBI-related hospitalizations (52%).

### **Emergency Department Visits**

There were 508,141 injury-related emergency department (ED) visits among Kentucky residents in 2017. The leading mechanisms of injury-related ED visits were *falls* (147,428), *being struck by or against an object or person* (67,488), *motor vehicle traffic crashes* (56,686), and *overexertion* (34,250). The leading mechanism of intentional injury-related ED visits was *struck by/against* (11,930).

TBI (either TBI alone or in combination with other injuries) accounted for 11,652 ED visits. The majority of the TBI-related ED visits were unintentional (86%). Falls were the leading mechanism of TBI-related ED visits (39%).

## Data Sources and Methods

### Data Sources

All data are provisional and subject to change.

#### *Population Data*

U.S. Census, Population Division. "Annual Estimates of the Resident Population by Single Year of Age and Sex for the U.S., States, and Puerto Rico Commonwealth: 2017 Population Estimates." Population is limited to Kentucky residents.

#### *Mortality Data*

Kentucky Death Certificate Database, Kentucky Office of Vital Statistics, Cabinet for Health and Family Services, Frankfort, KY.

#### *Inpatient Hospitalization Discharge Data*

Kentucky Inpatient Hospitalization Claims Files, Office of Health Data and Analytics, Cabinet for Health and Family Services, Frankfort, KY. Note: Counts represent encounters of care and could be greater than the number of individual patients treated at an acute care facility.

#### *Emergency Department Visit Discharge Data*

Kentucky Outpatient Services Database, Office of Health Data and Analytics, Cabinet for Health and Family Services, Frankfort, KY. Note: Counts represent encounters of care and could be greater than the number of individual patients treated.

### Methods

All data were limited to Kentucky residents.

#### *Injury Fatalities*

The definitions for fatal injuries used in this report correspond to the Centers for Disease Control and Prevention (CDC)'s "State injury indicators report: Instructions for preparing 2017 data." The underlying cause of death field was used to identify the mechanism and manner of fatal injuries.

**PLEASE NOTE:** *Death counts in this report are based on state death certificate files and thus cannot be expected to match counts based on other sources. In particular, numbers of motor vehicle traffic deaths will not match those based on police collision reports (PCRs) because the two systems do not report on identical underlying populations. Death certificates capture deaths of Kentucky residents regardless of where they occur; PCRs capture deaths that occur on Kentucky roads only, regardless of state of residence. Similarly, counts of homicides and assaults in this report will not match counts based on police crime reports. These data sources should be viewed as complementary. There also exist specialized, death certificate-based surveillance systems for injury fatalities at both the state (e.g., the Kentucky Violent Death Reporting System and Child Fatality Reviews) and national levels (e.g., CDC's Web-Based Injury Statistics Query and Reporting System/WISQARS™ and Wide-ranging Online Data for Epidemiologic Research/WONDER). Counts from those systems may not exactly match counts in this report due to differences in inclusion criteria, case definitions, the use of ancillary data sources for case identification, or other factors.*



### *Injury Inpatient Hospitalizations*

The definitions for injury hospitalizations used in this report correspond to the Council for State and Territorial Epidemiologists (CSTE) Injury Surveillance Toolkit. Hospitalizations were limited to discharges from nonfederal, acute care, or inpatient facilities. CDC's proposed surveillance definitions for injury hospitalizations were used; only initial encounters were included (indicated by a seventh character of "A" or missing in the International Classification of Diseases, Tenth Revision, Clinical Modification [ICD-10-CM] code). The injury subset for hospitalizations was created by selecting discharges having a principal diagnosis code. The CDC's ICD-10-CM Poisoning and Non-Poisoning Matrices were used to categorize the injuries by mechanism and intent. The external causes of morbidity, which were used to provide injury details (e.g., intent, mechanism), are not required for discharge billing purposes; therefore, every injury hospitalization may not have this level of detail.

***PLEASE NOTE:*** *In October 2015, healthcare discharge data (injury hospitalization encounters) coding systems transitioned from ICD-9-CM to ICD-10-CM. The coding system transition should be considered when interpreting the data, and trend analysis using ICD-9-CM coded data for some years and ICD-10-CM coded data for other years is not recommended due to substantial differences and a lack of one-to-one correspondence between ICD-9-CM and ICD-10-CM.*

### *Injury Emergency Department Visits*

The definitions for injury emergency department (ED) visits used in this report correspond to the CSTE Injury Surveillance Toolkit. The CDC's proposed surveillance definitions for injury ED visits were used; only initial encounters were included (seventh character of "A" or missing) in the ED dataset using diagnosis codes or external cause codes. The CDC's ICD-10-CM Poisoning and Non-Poisoning Matrices were used to categorize the injuries by mechanism and intent. The external causes of morbidity, which were used to provide injury details (e.g., intent, mechanism) are not required for discharge billing purposes; therefore, every injury ED visit may not have this level of detail.

***PLEASE NOTE:*** *In October 2015, healthcare discharge data (emergency department visit encounters) coding systems transitioned from ICD-9-CM to ICD-10-CM. The coding system transition should be considered when interpreting the data, and trend analysis using ICD-9-CM coded data for some years and ICD-10-CM coded data for other years is not recommended due to substantial differences and a lack of one-to-one correspondence between ICD-9-CM and ICD-10-CM.*

### *Calculation of Rates and Data Presentation*

Two types of rates are reported. Age-specific ("crude") rates were calculated by dividing the number of injury events occurring in a particular age group by the estimated number of Kentucky residents in that age group in 2017 and multiplying by 100,000. Age-adjusted rates were adjusted to the year 2000 standard population. Rates based on counts of 20 or fewer may be unstable.

Data are presented as aggregated counts. Certain counts have been suppressed because either the observed number of injury events is very small (a count of at least one but fewer than five) and not appropriate for publication or the count can be used to calculate the number in a count that has been suppressed.

## ***Definitions for “Leading Cause” by Age Group and Intent Injury Mortality and Discharge Data Matrices***

Motor vehicle non-traffic (MV non-traffic)—Includes motor vehicle crashes that occurred somewhere other than on a public roadway.

Motor vehicle traffic (MV traffic)—This includes crashes that occurred on a public roadway and involved at least one motor vehicle. All persons injured in MV traffic incidents are counted here. Pedal cyclists and pedestrians who were struck by a motor vehicle would be counted here, but those who crashed on a public roadway without involvement of a motor vehicle would be counted elsewhere (see “Pedal Cyclist, Other” definition).

Natural/Environmental—Natural or environmental causes (insect bites and stings, animal bites, extreme weather, excessive heat or cold, etc.).

Other Land Transport—Other land transportation. Includes motor vehicle crashes that occurred somewhere other than on a public roadway, rail injuries, etc. Does not include air or water injuries.

Other Specified—Other specified cause of injury. Includes a variety of relatively low-incidence causes of injury grouped together. Includes causes not elsewhere classified; an external cause of injury code that is intended for use when no other code exists to adequately describe the mechanism and manner of injury.

Pedal Cyclist, Other—Includes pedal cyclists who crashed on a public roadway without involvement of a motor vehicle.

Poisoning—Includes drug and non-drug poisonings, unless otherwise noted.

Tie—Indicates a tied count for a leading cause of injury-related mortality or morbidity.

Unspecified—Injuries for which an external code of injury either (a) was not specified or (b) was specified but did not indicate the mechanism or manner of injury.

## 10 Leading Causes of Injury-Related Mortality by Age Group and Intent, 2017 Kentucky Residents

Rank	Under 12 years old	12-17 years old	18-24 years old	25-34 years old	35-44 years old	45-54 years old	55-64 years old	65 years and older
1	Suffocation 25	Motor Vehicle Traffic 27	Motor Vehicle Traffic 95	Poisoning 363	Poisoning 410	Poisoning 357	Poisoning 175	Fall 254
2	Motor Vehicle Traffic 21	Firearm 16	Poisoning 79	Motor Vehicle Traffic 123	Motor Vehicle Traffic 98	Motor Vehicle Traffic 100	Motor Vehicle Traffic 103	Unspecified 176
3	Drowning 9	Firearm 12	Firearm 46	Firearm 62	Firearm 63	Firearm 84	Firearm 74	Motor Vehicle Traffic 130
4	Unspecified 7	Suffocation 6	Firearm 43	Firearm 55	Suffocation 39	Suffocation 41	Fall 30	Firearm 112
5			Suffocation 16	Suffocation 45	Firearm 36	Firearm 29	Poisoning 18	Suffocation 53
6				Cut/Pierce 10	Poisoning 18	Poisoning 15	Firearm 16	Poisoning 34
7				Tie* 9	Poisoning 15	Poisoning 14	Tie* 15	Fire/Flame 20
8				Legal/War Firearm 6	Fall 7	Fall 10	Suffocation 12	Poisoning 15
9				Tie* 5	Tie* 5	Unspecified 9	Fire/Flame 11	Natural/ Environmental 12
10						Tie* 7	Cut/Pierce 5	Other Specified 11

Injury Intent		
<b>Unintentional</b>	<b>Suicide</b>	<b>Homicide</b>
<b>Undetermined</b>		

\*Indicates a tied count for leading injury-related deaths. Counts less than five are not included in this matrix. Produced by the Kentucky Injury Prevention and Research Center, as bona fide agent for the Kentucky Department for Public Health, February 2021. This product was supported by grants numbers 5NU17CE924846 (Centers for Disease Control and Prevention) and 3048114413. Data source: Kentucky Death Certificate Database, Kentucky Office of Vital Statistics, Cabinet for Health and Family Services. Data are provisional and subject to change.



## 10 Leading Causes of Injury-Related Inpatient Hospitalizations by Age Group and Intent, 2017 Kentucky Residents

Rank	Under 12 years old	12-17 years old	18-24 years old	25-34 years old	35-44 years old	45-54 years old	55-64 years old	65 years and older
1	Fall 152	Drug Poisoning 153	Motor Vehicle Traffic 355	Drug Poisoning 491	Drug Poisoning 487	Fall 655	Fall 1,485	Fall 8,720
2	Motor Vehicle Traffic 85	Motor Vehicle Traffic 112	Drug Poisoning 239	Motor Vehicle Traffic 431	Motor Vehicle Traffic 420	Drug Poisoning 485	Drug Poisoning 432	Motor Vehicle Traffic 508
3	Child/ Adult Abuse 50	Other Land Transport 49	Drug Poisoning 149	Drug Poisoning 293	Fall 347	Motor Vehicle Traffic 400	Motor Vehicle Traffic 384	Drug Poisoning 363
4	Drug Poisoning 49	Fall 46	Fall 80	Fall 176	Drug Poisoning 329	Drug Poisoning 322	Drug Poisoning 193	Struck By/Against 158
5	Hot Object/Substance 30	Motor Vehicle Non-Traffic 22	Firearm 46	Struck By/Against 54	Other Land Transport 59	Tie* 49	Unspecified 63	Unspecified 157
6	Bite/Sting 22	Struck By/Against 21	Firearm 45	Firearm 47	Struck By/Against 49	Struck By/Against 45	Struck By/Against 56	Drug Poisoning 83
7	Unspecified 20	Drug Poisoning 19	Other Land Transport 34	Firearm 45	Motor Vehicle Non-Traffic 36	Struck By/Against 44	Other Land Transport 41	Overexertion 45
8	Other Land Transport 19	Firearm 15	Motor Vehicle Non-Traffic 29	Other Land Transport 39	Unspecified 33	Motor Vehicle Non-Traffic 37	Struck By/Against 33	Motor Vehicle Non-Traffic 43
9	Tie* 15	Firearm 13	Struck By/Against 24	Motor Vehicle Non-Traffic 36	Cut/Pierce 32	Bite/Sting 30	Tie* 26	Tie* 36
10	Natural/ Environmental 9	Unspecified 11	Struck By/Against 19	Cut/Pierce 34	Tie* 30	Drug Poisoning 28	Motor Vehicle Non-Traffic 25	Natural/ Environmental 35

Injury Intent		
Unintentional	Self-Harm	Assault
Undetermined		

\*Indicates a tied count for leading injury-related inpatient hospitalizations. Counts represent encounters of care and could be greater than the number of individual patients treated at an acute care facility. Counts less than five are not included in this matrix. Produced by the Kentucky Injury Prevention and Research Center, as bona fide agent for the Kentucky Department for Public Health, February 2021. This product was supported by grants numbers 5NU17CE924846 (Centers for Disease Control and Prevention) and 3048114413. Data source: Kentucky Inpatient Hospitalization Claims Files, Office of Health Data and Analytics. Data are provisional and subject to change.



## 10 Leading Causes of Injury-Related Emergency Department Visits by Age Group and Intent, 2017 Kentucky Residents

Rank	Under 12 years old	12-17 years old	18-24 years old	25-34 years old	35-44 years old	45-54 years old	55-64 years old	65 years and older
1	Fall 28,329	Fall 9,447	Motor Vehicle Traffic 10,309	Fall 12,474	Fall 14,009	Fall 16,449	Fall 17,530	Fall 41,213
2	Struck By/Against 12,409	Struck By/Against 8,658	Fall 7,918	Motor Vehicle Traffic 11,348	Motor Vehicle Traffic 8,933	Motor Vehicle Traffic 7,501	Motor Vehicle Traffic 5,620	Struck By/Against 4,339
3	Bite/Sting 6,078	Motor Vehicle Traffic 4,470	Struck By/Against 6,555	Struck By/Against 7,700	Struck By/Against 6,634	Struck By/Against 5,193	Struck By/Against 3,806	Motor Vehicle Traffic 4,303
4	Unspecified 5,911	Overexertion 4,258	Cut/Pierce 4,537	Unspecified 6,542	Overexertion 6,312	Unspecified 5,179	Unspecified 3,622	Unspecified 4,213
5	Cut/Pierce 4,241	Unspecified 3,652	Overexertion 4,397	Overexertion 6,485	Unspecified 6,071	Overexertion 4,989	Overexertion 3,090	Cut/Pierce 2,465
6	Motor Vehicle Traffic 4,115	Cut/Pierce 2,578	Unspecified 4,157	Cut/Pierce 6,029	Cut/Pierce 4,820	Cut/Pierce 3,870	Cut/Pierce 2,958	Overexertion 2,128
7	Overexertion 2,593	Bite/Sting 1,459	Struck By/Against 2,268	Drug Poisoning 3,387	Bite/Sting 2,635	Bite/Sting 2,381	Bite/Sting 1,859	Bite/Sting 1,574
8	Foreign Body 2,584	Struck By/Against 1,212	Bite/Sting 2,076	Struck By/Against 3,127	Struck By/Against 2,385	Struck By/Against 1,647	Drug Poisoning 767	Foreign Body 862
9	Other Specified 2,288	Other Land Transport 1,081	Other Specified 1,273	Bite/Sting 2,801	Drug Poisoning 2,279	Drug Poisoning 1,385	Struck By/Against 730	Drug Poisoning 648
10	Pedal Cyclist, Other 1,153	Other Specified 932	Drug Poisoning 1,197	Other Specified 1,597	Other Specified 1,279	Other Specified 1,017	Other Specified 666	Other Specified 495

<b>Unintentional</b>	<b>Self-Harm</b>	<b>Assault</b>	<b>Undetermined</b>
<b>Injury Intent</b>			

Counts represent encounters of care and could be greater than the number of individual patients treated. Counts less than five are not included in this matrix. Produced by the Kentucky Injury Prevention and Research Center, as bona fide agent for the Kentucky Department for Public Health. February 2021. This product was supported by grants numbers 5NU170E924846 (Centers for Disease Control and Prevention) and 3048114413. Data source: Kentucky Outpatient Services Database, Office of Health Data and Analytics. Data are provisional and subject to change.



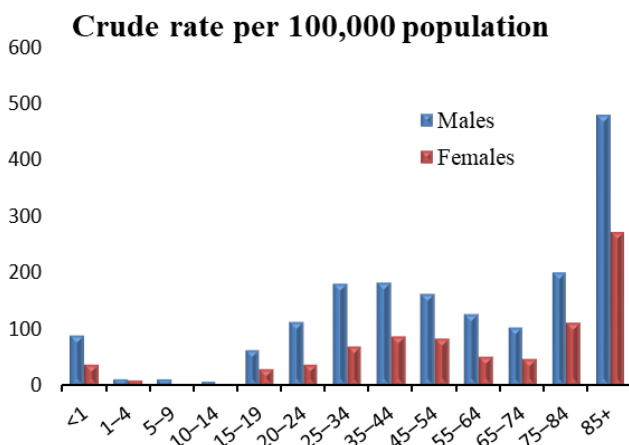
# All Injuries by Age and Sex

## Fatalities

Total: 4,083 (91.3\*)

Males: 2,722 (126.1\*)

Females: 1,361 (58.2\*)



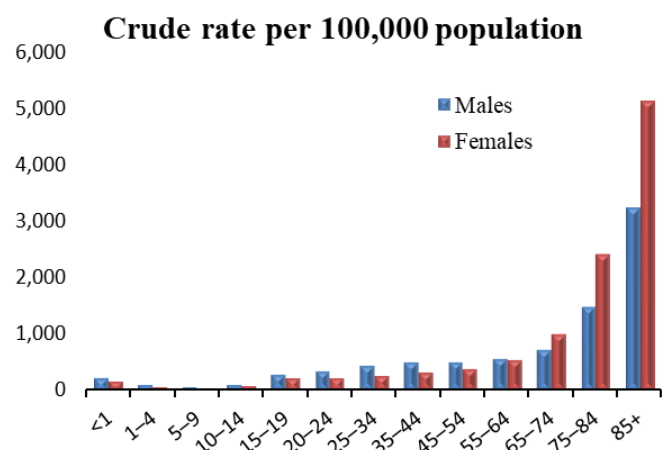
Age	Males	Females
<1	25	10
1-4	13	11
5-9	16	5
10-14	13	7
15-19	93	42
20-24	180	54
25-34	533	201
35-44	504	243
45-54	473	248
55-64	363	157
65-74	204	109
75-84	177	130
85+	128	144

## Inpatient Hospitalizations

Total: 24,198 (501.4\*)

Males: 10,832 (491.9\*)

Females: 13,366 (493.4\*)



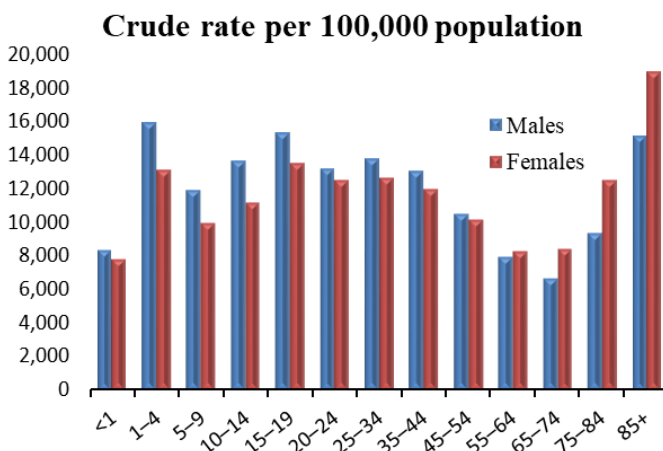
Age	Males	Females
<1	63	45
1-4	135	80
5-9	105	63
10-14	147	116
15-19	411	321
20-24	534	327
25-34	1,297	780
35-44	1,415	905
45-54	1,491	1,154
55-64	1,603	1,716
65-74	1,454	2,256
75-84	1,311	2,852
85+	866	2,751

## Emergency Department Visits

Total: 508,141 (11,747.2\*)

Males: 256,421 (12,061.5\*)

Females: 251,720 (11,366.5\*)

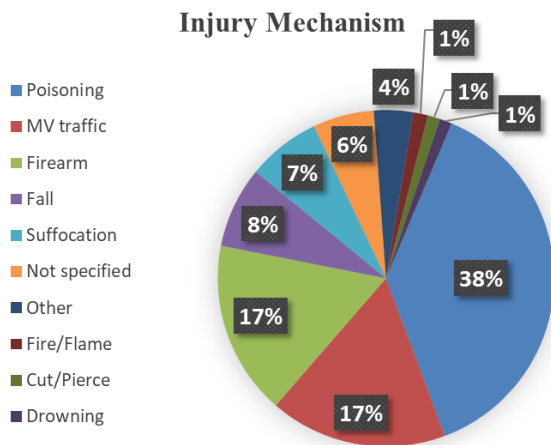


Age	Males	Females
<1	2,332	2,097
1-4	18,214	14,222
5-9	16,955	13,491
10-14	19,900	15,581
15-19	22,673	18,971
20-24	20,846	18,211
25-34	40,650	36,393
35-44	35,927	33,027
45-54	30,476	30,280
55-64	22,829	25,522
65-74	13,294	19,051
75-84	8,273	14,704
85+	4,052	10,170

\*Age-adjusted rate per 100,000 population

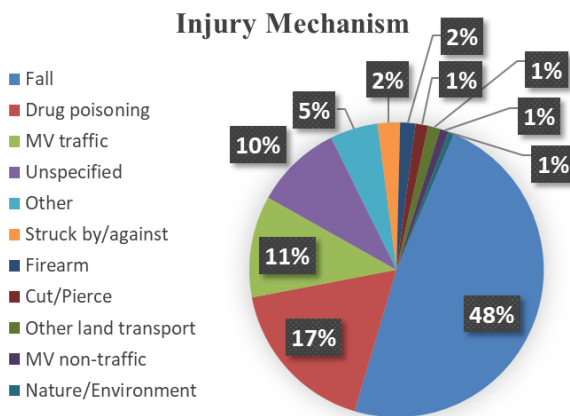
# All Injuries by Injury Mechanism

## Fatalities



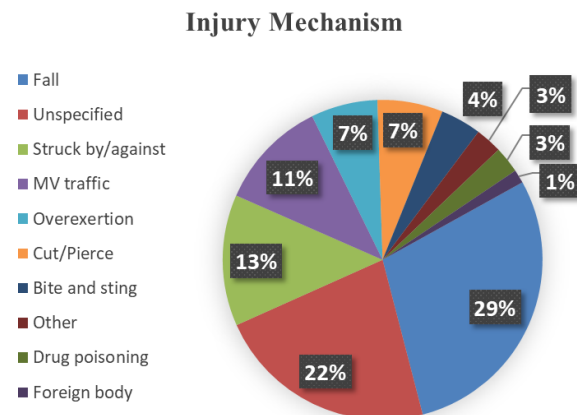
Injury Mechanism	Count
Poisoning	1,548
MV traffic	697
Firearm	683
Fall	319
Suffocation	288
Not specified	240
Other	154
Fire/Flame	58
Cut/Pierce	48
Drowning	48

## Inpatient Hospitalizations



Injury Mechanism	Count
Fall	11,668
Drug poisoning	4,207
MV traffic	2,699
Unspecified	2,306
Other	1,270
Struck by/against	598
Firearm	407
Cut/Pierce	335
Other land transport	326
MV non-traffic	232
Nature/Environment	150

## Emergency Department Visits



Injury Mechanism	Count
Fall	147,428
Unspecified	113,575
Struck by/against	67,488
MV traffic	56,686
Overexertion	34,250
Cut/Pierce	33,625
Bite and sting	20,973
Other	13,613
Drug poisoning	13,592
Foreign body	6,911

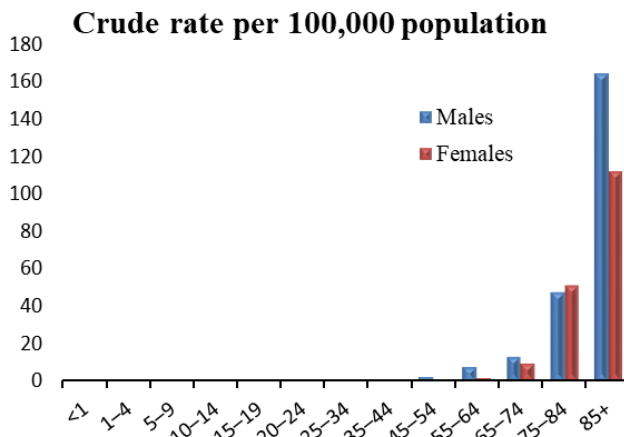
# Unintentional Falls by Age and Sex

## Fatalities

Total: 307 (6.0\*)

Males: 151 (7.0\*)

Females: 156 (5.2\*)



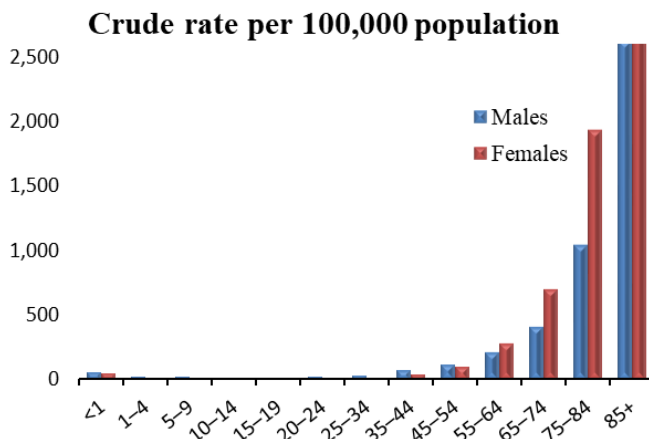
Age	Males	Females
<1	0	0
1-4	0	0
5-9	0	0
10-14	0	0
15-19	0	0
20-24	#	0
25-34	#	#
35-44	#	#
45-54	8	#
55-64	23	7
65-74	26	22
75-84	42	60
85+	44	60

## Inpatient Hospitalization

Total: 11,661 (225.6\*)

Males: 3,936 (177.3\*)

Females 7,725 (257.0\*)



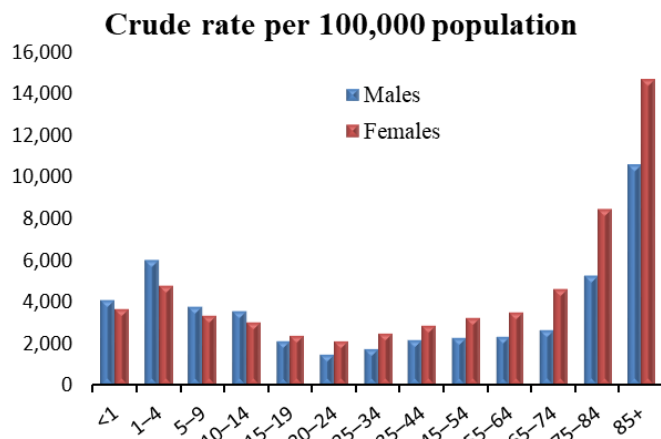
Age	Males	Females
<1	18	15
1-4	30	14
5-9	36	20
10-14	30	12
15-19	30	14
20-24	37	22
25-34	114	62
35-44	219	128
45-54	348	307
55-64	620	865
65-74	823	1,587
75-84	927	2,278
85+	704	2,401

## Emergency Department Visits

Total: 147,362 (3,256.8\*)

Males: 61,973 (2,888.6\*)

Females: 85,389 (3,569.9\*)



Age	Males	Females
<1	1,140	986
1-4	6,907	5,191
5-9	5,394	4,562
10-14	5,186	4,236
15-19	3,201	3,356
20-24	2,425	3,110
25-34	5,297	7,176
35-44	6,019	7,990
45-54	6,775	9,673
55-64	6,717	10,812
65-74	5,389	10,461
75-84	4,680	9,964
85+	2,843	7,872

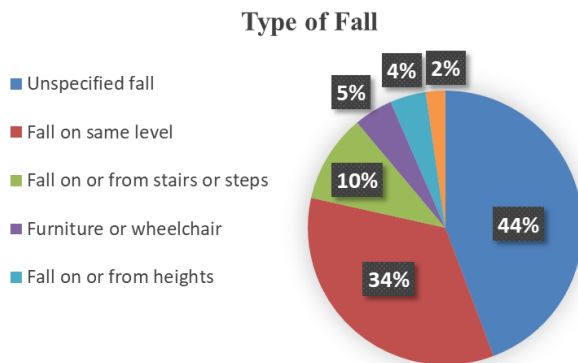
\*Age-adjusted rate per 100,000 population

#At least one but fewer than five



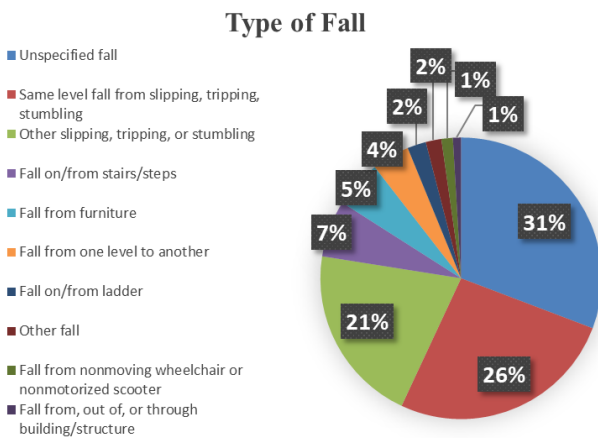
# Unintentional Falls by Type of Fall

## Fatalities



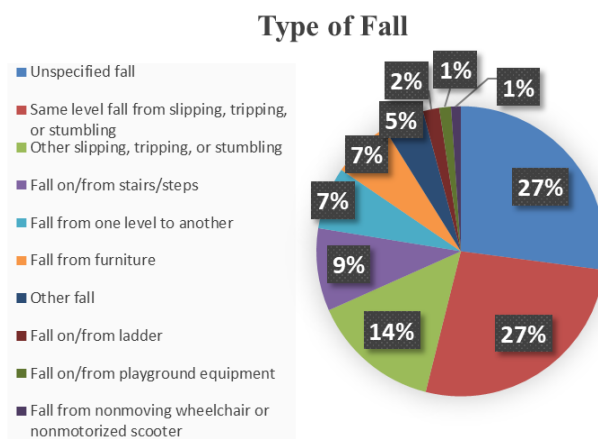
Type of Fall	Count
Unspecified fall	136
Fall on same level	105
Fall on or from stairs or steps	32
Furniture or wheelchair	14
Fall on or from heights	13
Other fall from one level to another	7

## Inpatient Hospitalizations



Type of Fall	Count
Unspecified fall	3,589
Same level fall from slipping, tripping, or stumbling	3,052
Other slipping, tripping, or stumbling	2,396
Fall on/from stairs/steps	761
Fall from furniture	638
Fall from one level to another	503
Fall on/from ladder	250
Other fall	210
Fall from nonmoving wheelchair or nonmotorized scooter	152
Fall from, out of, or through building/structure	110

## Emergency Department Visits



Type of Fall	Count
Unspecified fall	39,892
Same level fall from slipping, tripping, or stumbling	39,567
Other slipping, tripping, or stumbling	21,246
Fall on/from stairs/steps	13,581
Fall from one level to another	10,221
Fall from furniture	9,747
Other fall	6,886
Fall on/from ladder	2,685
Fall on/from playground equipment	1,932
Fall from nonmoving wheelchair or nonmotorized scooter	1,605

# Unintentional Fire-Related Injuries by Age and Sex

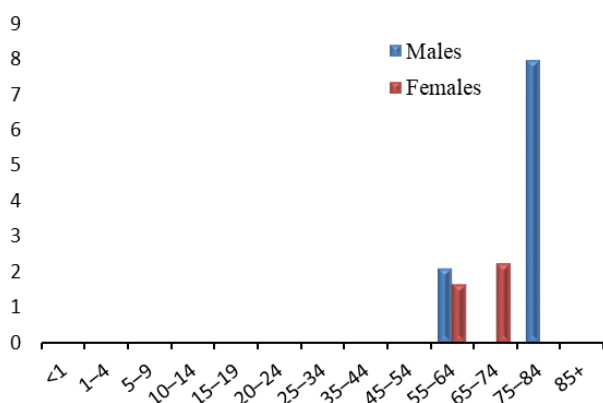
## Fatalities

Total: 47 (0.9\*)

Males: 27 (1.2\*)

Females: 20 (0.8\*)

Crude rate per 100,000 population



Age	Males	Females
<1	0	0
1-4	0	0
5-9	#	#
10-14	0	0
15-19	0	0
20-24	#	0
25-34	#	#
35-44	0	#
45-54	#	#
55-64	6	5
65-74	#	5
75-84	7	#
85+	#	#

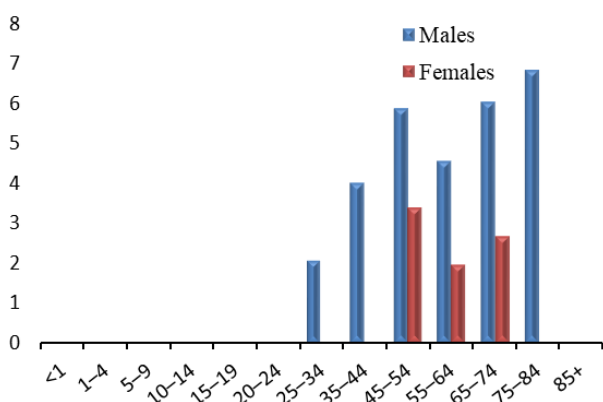
## Inpatient Hospitalizations

Total: 112 (2.4\*)

Males: 78 (3.4\*)

Females: 34 (1.4\*)

Crude rate per 100,000 population



Age	Males	Females
<1	#	#
1-4	#	#
5-9	#	0
10-14	#	0
15-19	#	#
20-24	#	#
25-34	6	#
35-44	11	#
45-54	17	10
55-64	13	6
65-74	12	6
75-84	6	#
85+	0	0

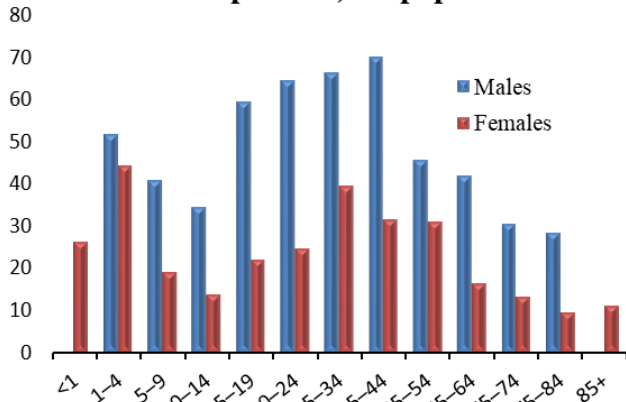
## Emergency Department Visits

Total: 1,651 (38.5\*)

Males: 1,093 (51.0\*)

Females: 558 (26.1\*)

Crude rate per 100,000 population

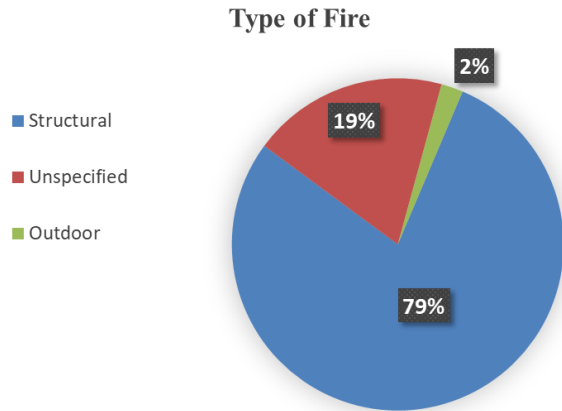


Age	Males	Females
<1	#	7
1-4	59	48
5-9	58	26
10-14	50	19
15-19	88	31
20-24	102	36
25-34	196	114
35-44	193	87
45-54	133	92
55-64	120	51
65-74	61	30
75-84	25	11
85+	#	6

\*Age-adjusted rate per 100,000 population  
#At least one but fewer than five

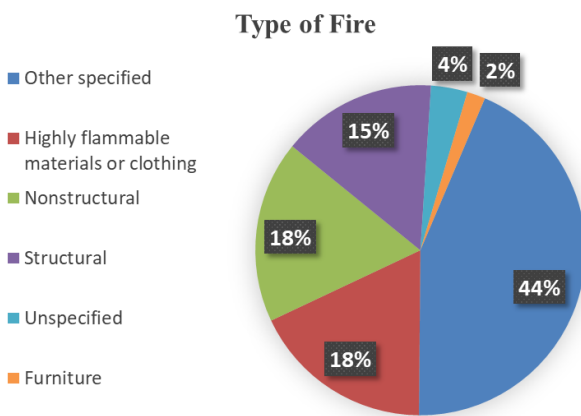
# Unintentional Fire-Related Injuries by Type of Fire

## Fatalities



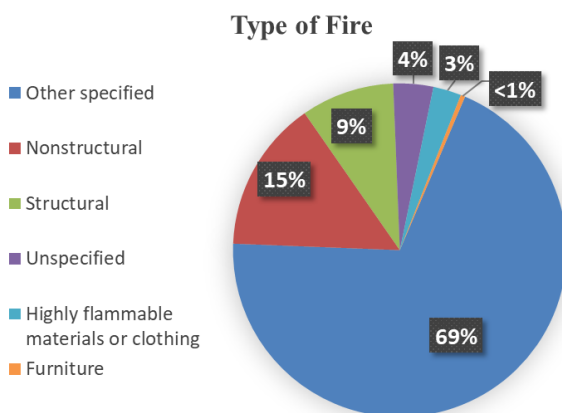
Type of Fire	Count
Structural	37
Unspecified	##
Outdoor	#

## Inpatient Hospitalizations



Type of Fire	Count
Other specified	49
Highly flammable materials or clothing	20
Nonstructural	20
Structural	17
Unspecified	#
Furniture	#

## Emergency Department Visits



Type of Fire	Count
Other specified	1,143
Non structural	243
Structural	149
Unspecified	64
Highly flammable materials or clothing	45
Furniture	7

#At least one but fewer than five

##Suppressed to prevent indirect disclosure

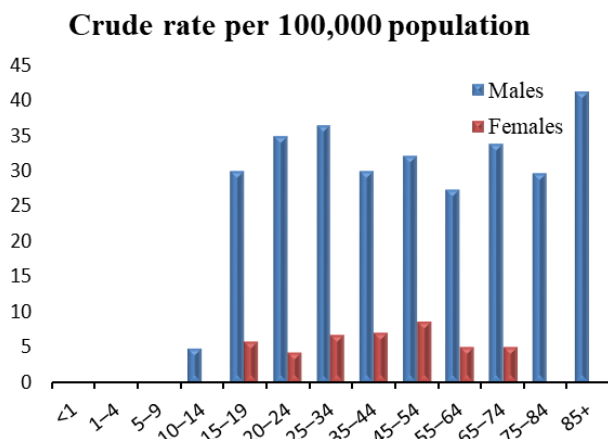
# Firearm-Related Injuries by Age and Sex

## Fatalities

Total: 683 (15.0\*)

Males: 574 (25.7\*)

Females: 109 (4.8\*)



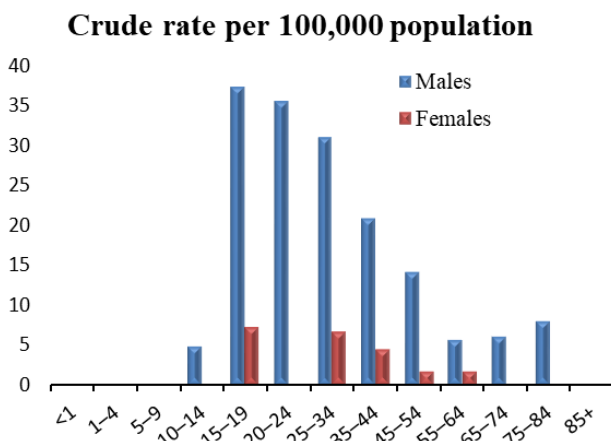
Age	Males	Females
<1	0	0
1-4	#	0
5-9	#	0
10-14	7	#
15-19	44	8
20-24	55	6
25-34	107	19
35-44	82	19
45-54	93	25
55-64	78	15
65-74	67	11
75-84	26	#
85+	11	#

## Inpatient Hospitalizations

Total: 407 (9.7\*)

Males: 347 (16.4\*)

Females: 60 (2.9\*)



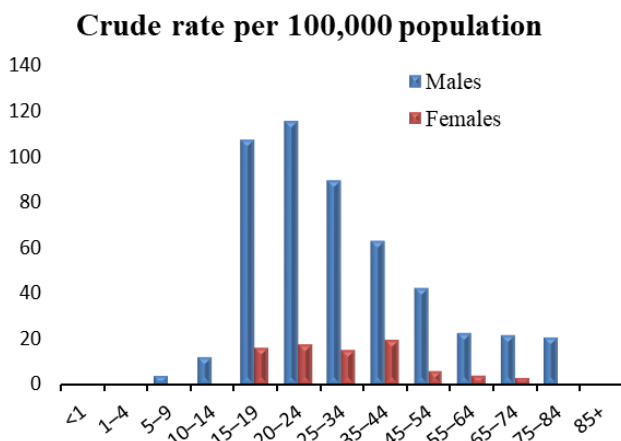
Age	Males	Females
<1	0	0
1-4	#	0
5-9	0	#
10-14	7	#
15-19	55	10
20-24	56	#
25-34	91	19
35-44	57	12
45-54	41	5
55-64	16	5
65-74	12	#
75-84	7	#
85+	#	0

## Emergency Department Visits

Total: 1,237 (29.2\*)

Males: 1,051 (49.1\*)

Females: 186 (9.1\*)

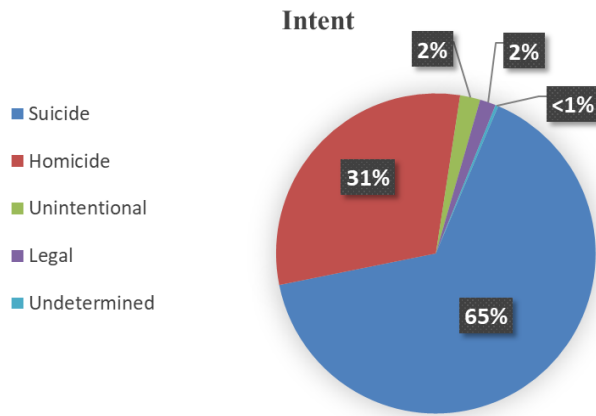


Age	Males	Females
<1	0	0
1-4	#	#
5-9	5	#
10-14	17	#
15-19	158	22
20-24	182	25
25-34	263	43
35-44	172	53
45-54	122	17
55-64	64	11
65-74	43	6
75-84	18	#
85+	#	0

\*Age-adjusted rate per 100,000 population  
#At least one but fewer than five

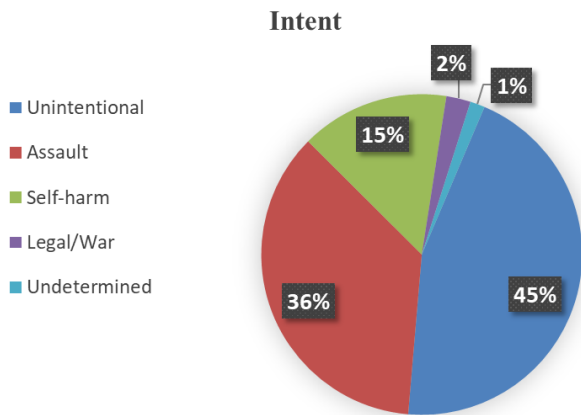
# Firearm-Related Injuries by Intent

## Fatalities



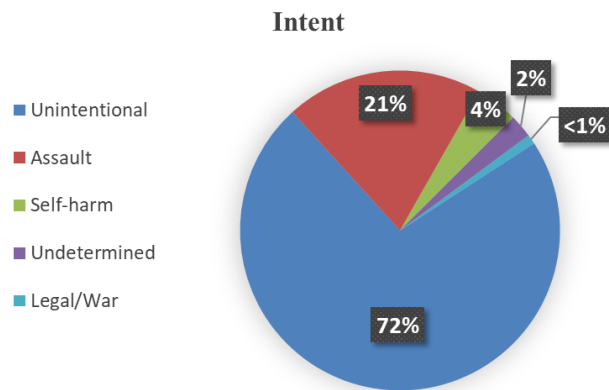
Intent	Count
Suicide	447
Homicide	209
Unintentional	14
Legal	##
Undetermined	#

## Inpatient Hospitalizations



Intent	Count
Unintentional	183
Assault	147
Self-harm	61
Legal/War	10
Undetermined	6

## Emergency Department Visits



Intent	Count
Unintentional	896
Assault	247
Self-harm	53
Undetermined	29
Legal/War	12

#At least one but fewer than five

##Suppressed to prevent indirect disclosure

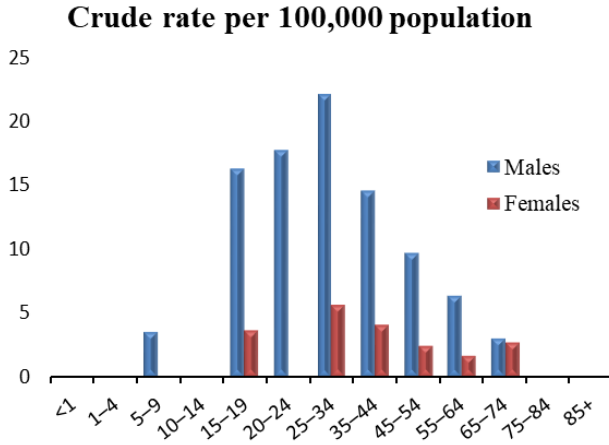
# Homicide and Assault by Age and Sex

## Fatalities

Total: 289 (6.8\*)

Males: 225 (10.6\*)

Females: 64 (3.0\*)



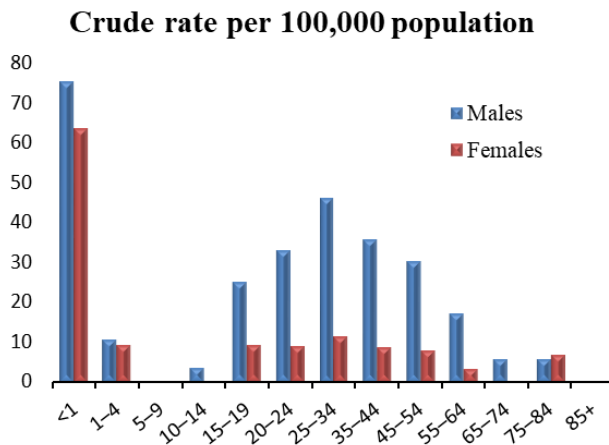
Age	Males	Females
<1	#	#
1-4	#	#
5-9	5	#
10-14	#	#
15-19	24	5
20-24	28	#
25-34	65	16
35-44	40	11
45-54	28	7
55-64	18	5
65-74	6	6
75-84	#	#
85+	#	0

## Inpatient Hospitalizations

Total: 675 (15.9\*)

Males: 518 (24.4\*)

Females: 157 (7.5\*)



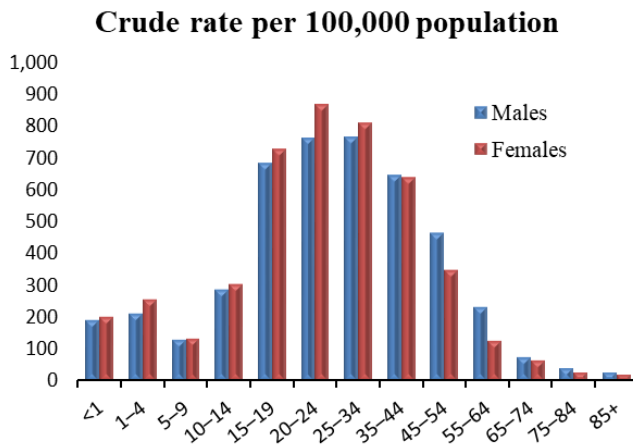
Age	Males	Females
<1	21	17
1-4	12	10
5-9	#	#
10-14	5	#
15-19	37	13
20-24	52	13
25-34	136	33
35-44	98	24
45-54	88	23
55-64	49	10
65-74	11	#
75-84	5	8
85+	#	0

## Emergency Department Visits

Total: 18,336 (441.3\*)

Males: 9,384 (445.7\*)

Females: 8,952 (438.2\*)

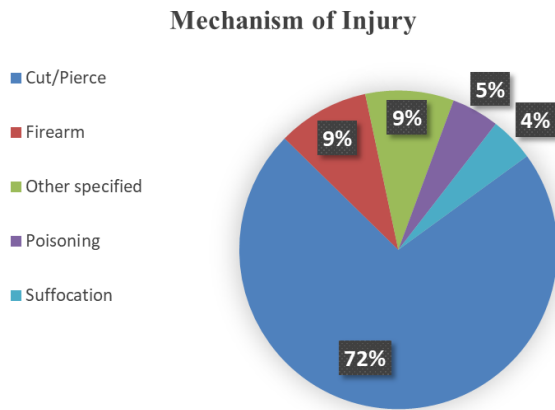


Age	Males	Females
<1	54	54
1-4	243	277
5-9	186	182
10-14	421	425
15-19	1,013	1,020
20-24	1,206	1,266
25-34	2,263	2,335
35-44	1,778	1,769
45-54	1,359	1,038
55-64	665	393
65-74	150	149
75-84	38	32
85+	8	12

\*Age-adjusted rate per 100,000 population  
#At least one but fewer than five

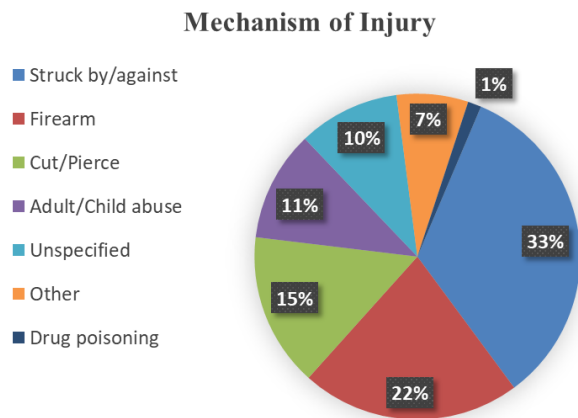
# Homicide and Assault by Mechanism of Injury

## Fatalities



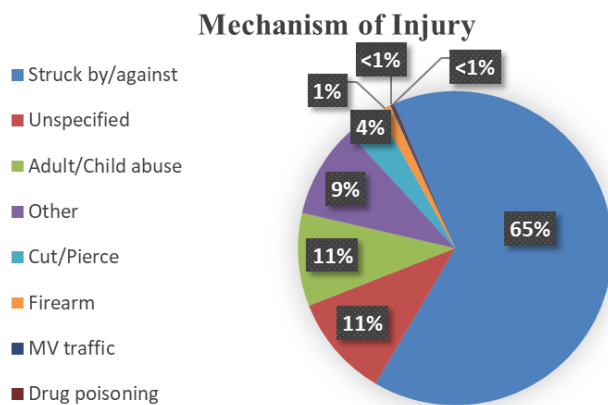
Mechanism of Injury	Count
Firearm	209
Cut/Pierce	27
Unspecified	26
Other specified	14
Suffocation	13

## Inpatient Hospitalizations



Mechanism of Injury	Count
Struck by/against	226
Firearm	147
Cut/Pierce	103
Adult/Child abuse	74
Unspecified	68
Other	48
Drug poisoning	9

## Emergency Department Visits



Mechanism of Injury	Count
Struck by/against	11,890
Unspecified	1,938
Adult/Child abuse	1,759
Other	1,751
Cut/Pierce	680
Firearm	247
MV traffic	39
Drug poisoning	32

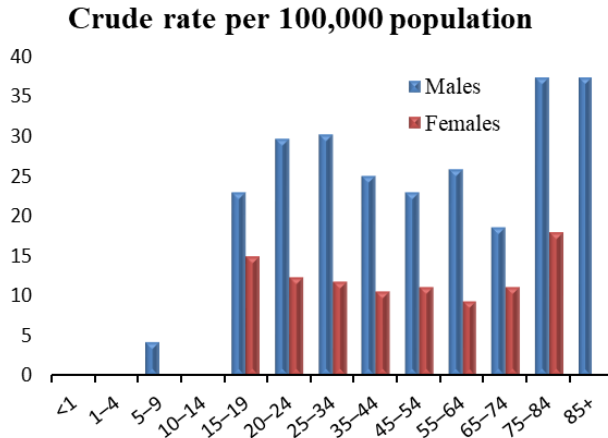
# Unintentional MV Traffic Crashes by Age and Sex

## Fatalities

Total: 697 (15.4\*)

Males: 473 (21.3\*)

Females: 224 (9.7\*)



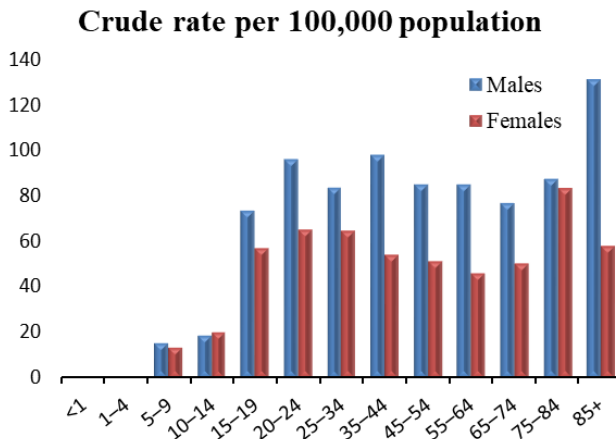
Age	Males	Females
<1	#	#
1-4	#	#
5-9	6	#
10-14	#	#
15-19	34	21
20-24	47	18
25-34	89	34
35-44	69	29
45-54	67	33
55-64	74	29
65-74	37	25
75-84	33	21
85+	10	#

## Inpatient Hospitalizations

Total: 2,694 (59.6\*)

Males: 1,589 (71.8\*)

Females: 1,105 (48.0\*)



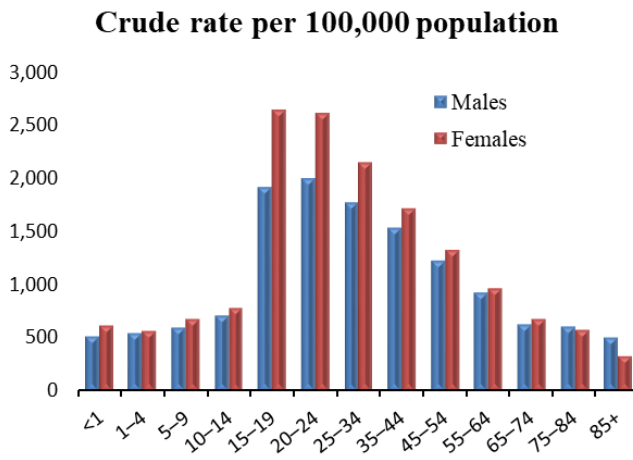
Age	Males	Females
<1	#	#
1-4	##	##
5-9	22	18
10-14	27	28
15-19	108	80
20-24	151	95
25-34	245	186
35-44	269	150
45-54	247	153
55-64	242	142
65-74	153	114
75-84	77	98
85+	35	31

## Emergency Department Visits

Total: 56,598 (1,314.0\*)

Males: 26,122 (1,213.2\*)

Females: 30,476 (1,419.2\*)



Age	Males	Females
<1	144	165
1-4	620	615
5-9	849	922
10-14	1,033	1,094
15-19	2,824	3,686
20-24	3,151	3,791
25-34	5,193	6,154
35-44	4,201	4,732
45-54	3,561	3,940
55-64	2,636	2,984
65-74	1,244	1,538
75-84	530	681
85+	136	174

\*Age-adjusted rate per 100,000 population

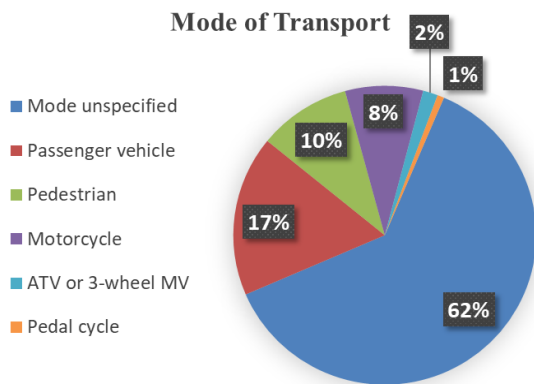
#At least one but fewer than five

##Suppressed to prevent indirect disclosure



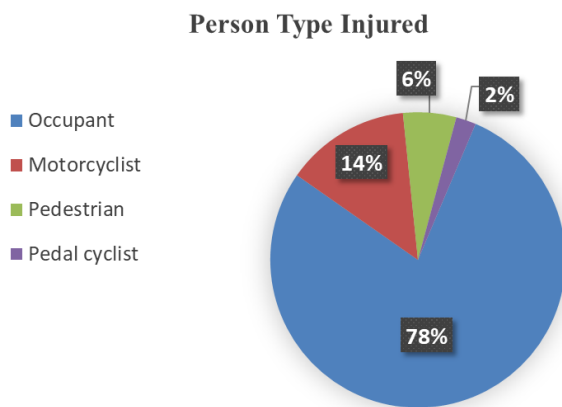
# Unintentional MV Traffic Crashes by Mode of Transport

## Fatalities



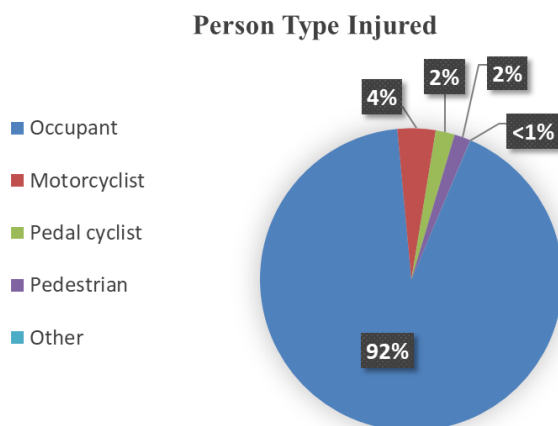
Mechanism of Injury	Count
Mode unspecified	433
Passenger vehicle	121
Pedestrian	69
Motorcycle	58
ATV or 3-wheel MV	11
Pedal cycle	5

## Inpatient Hospitalizations



Person Type Injured	Count
Occupant	2,110
Motorcyclist	368
Pedestrian	157
Pedal cyclist	59

## Emergency Department Visits



Person Type Injured	Count
Occupant	52,142
Motorcyclist	2,301
Pedal cyclist	1,156
Pedestrian	988
Other	11

Note: "Other" includes ED visits due to injuries related to persons boarding and alighting and unspecified occupants of a motor vehicle.

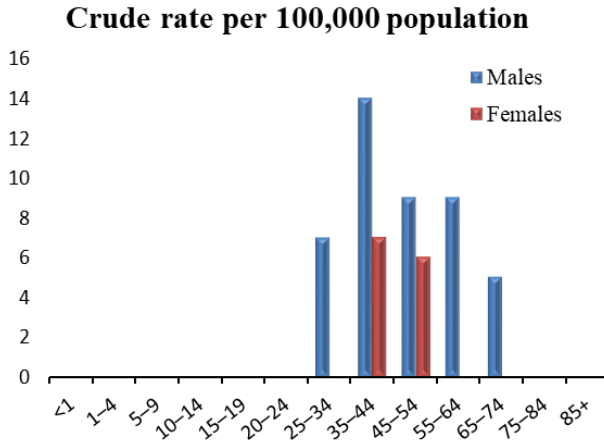
# Non-Drug Poisoning by Age and Sex

## Fatalities

Total: 71 (1.6\*)

Males: 48 (2.2\*)

Females: 23 (1.0\*)



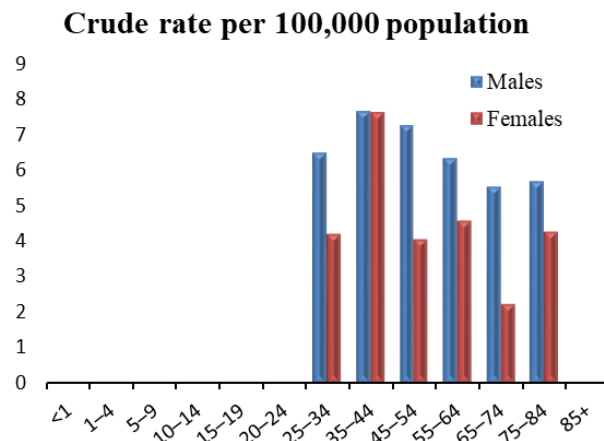
Age	Males	Females
<1	0	0
1-4	0	0
5-9	0	0
10-14	0	0
15-19	0	0
20-24	#	0
25-34	7	#
35-44	14	7
45-54	9	6
55-64	9	#
65-74	5	#
75-84	#	#
85+	0	#

## Inpatient Hospitalizations

Total: 183 (4.1\*)

Males: 105 (4.7\*)

Females: 78 (3.4\*)



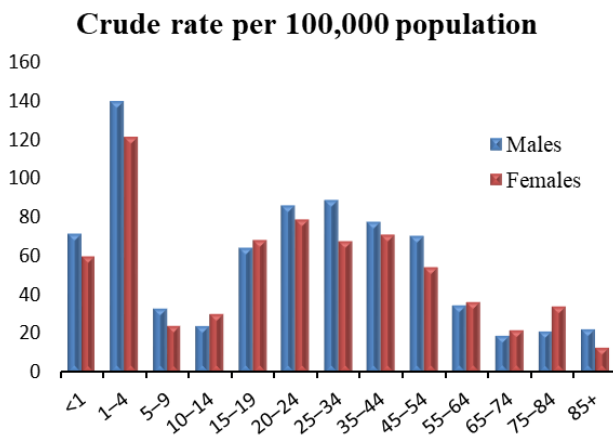
Age	Males	Females
<1	#	0
1-4	0	0
5-9	#	0
10-14	#	0
15-19	#	#
20-24	#	#
25-34	19	12
35-44	21	21
45-54	21	12
55-64	18	14
65-74	11	5
75-84	5	5
85+	0	#

## Emergency Department Visits

Total: 2,532 (59.7\*)

Males: 1,337 (63.2\*)

Females: 1,195 (56.2\*)

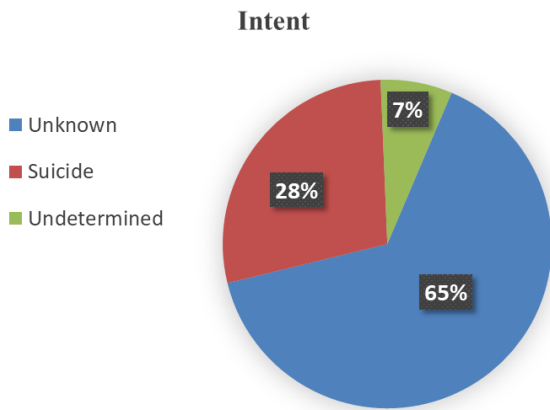


Age	Males	Females
<1	20	16
1-4	160	131
5-9	47	33
10-14	35	42
15-19	95	96
20-24	136	115
25-34	263	195
35-44	214	196
45-54	205	161
55-64	99	113
65-74	38	50
75-84	19	40
85+	6	7

\*Age-adjusted rate per 100,000 population  
#At least one but fewer than five

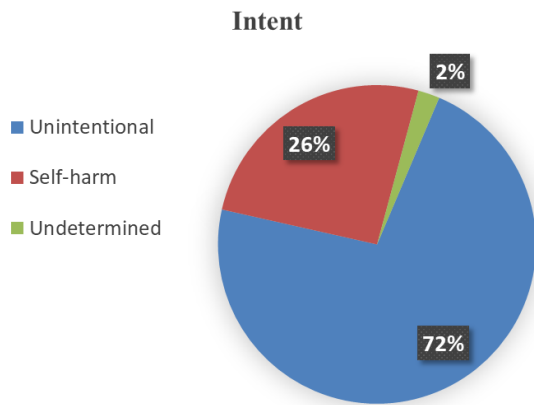
# Non-Drug Poisoning by Intent

## Fatalities



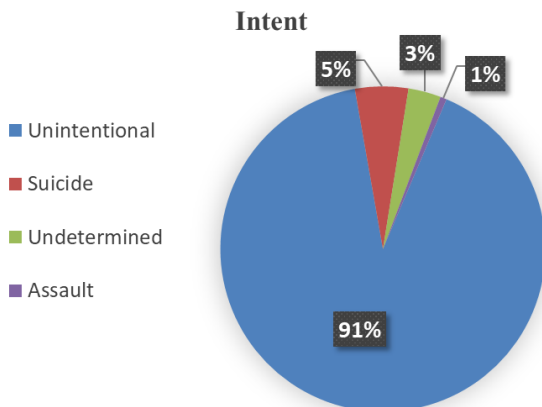
Intent	Count
Unknown	46
Suicide	20
Undetermined	5

## Inpatient Hospitalizations



Intent	Count
Unintentional	132
Self-harm	##
Undetermined	#

## Emergency Department Visits



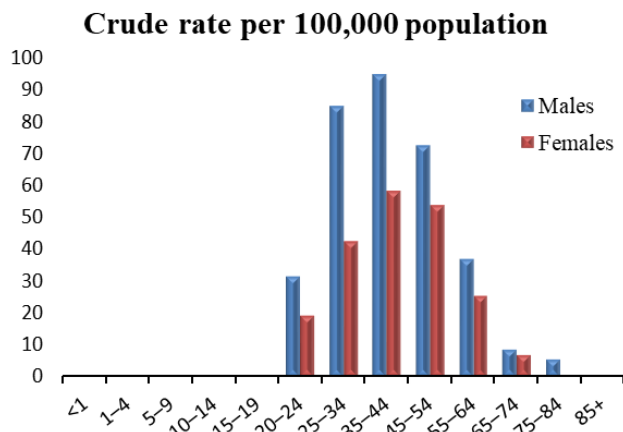
Intent	Count
Unintentional	2,300
Suicide	134
Undetermined	82
Assault	16

#At least one but fewer than five

##Suppressed to prevent indirect disclosure

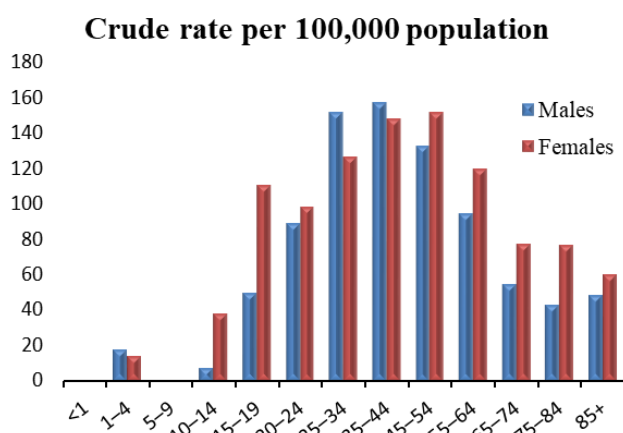
# Drug Poisoning by Age and Sex

**Fatalities** Total: 1,477 (35.0\*) Males: 905 (43.2\*) Females: 572 (26.8\*)



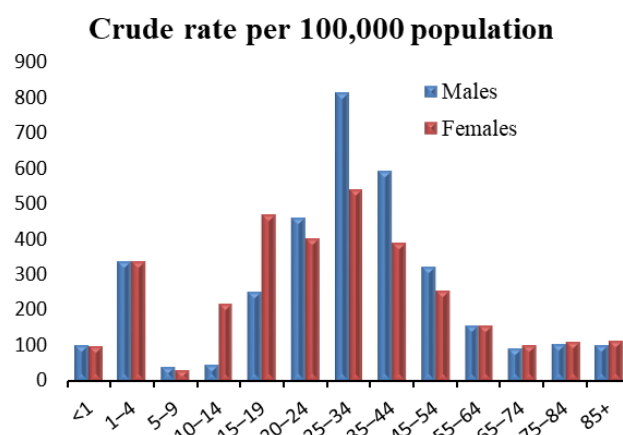
Age	Males	Females
<1	0	0
1-4	0	0
5-9	0	0
10-14	#	#
15-19	#	#
20-24	50	28
25-34	250	122
35-44	261	161
45-54	211	160
55-64	106	78
65-74	17	16
75-84	5	#
85+	#	0

**Inpatient Hospitalizations** Total: 4,207 (95.2\*) Males: 1,945 (89.9\*) Females: 2,262 (100.1\*)



Age	Males	Females
<1	#	#
1-4	20	15
5-9	###	#
10-14	10	53
15-19	73	155
20-24	141	143
25-34	447	364
35-44	432	409
45-54	386	451
55-64	270	370
65-74	108	175
75-84	38	90
85+	13	32

**Emergency Department Visits** Total: 13,592 (323.7\*) Males: 7,332 (350.7\*) Females: 6,260 (296.8\*)



Age	Males	Females
<1	28	26
1-4	383	363
5-9	56	41
10-14	65	301
15-19	370	658
20-24	727	586
25-34	2,397	1,557
35-44	1,627	1,075
45-54	935	759
55-64	444	476
65-74	181	227
75-84	92	130
85+	27	61

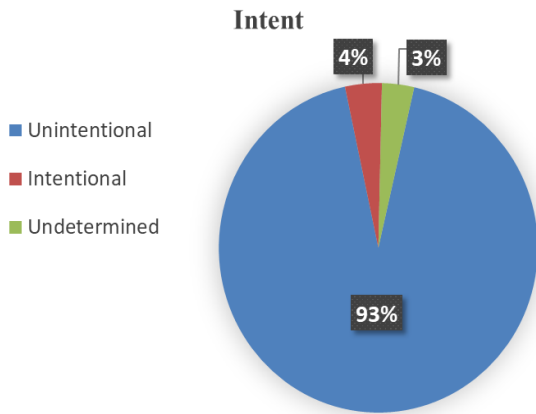
\*Age-adjusted rate per 100,000 population

#At least one but fewer than five

##Suppressed to prevent indirect disclosure

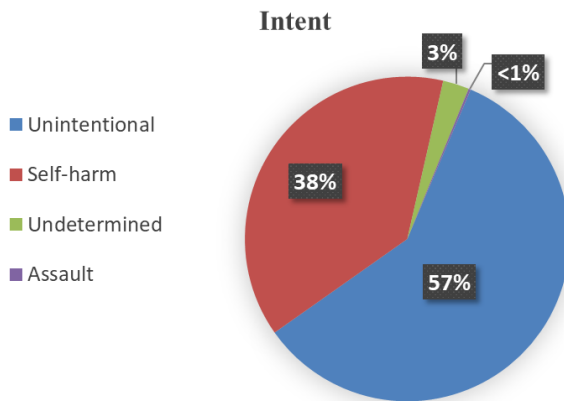
# Drug Poisoning by Intent

## Fatalities



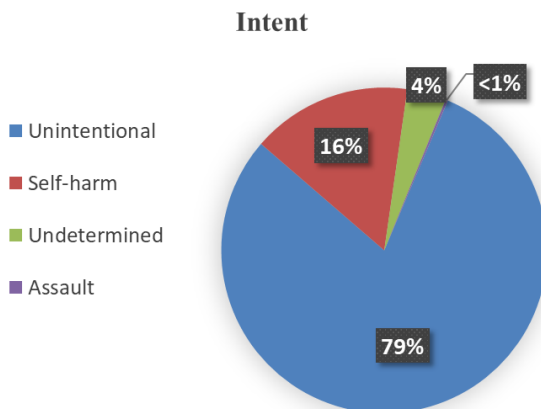
Intent	Count
Unintentional	1,374
Intentional	55
Undetermined	48

## Inpatient Hospitalizations



Intent	Count
Unintentional	2,475
Self-harm	1,613
Undetermined	110
Assault	9

## Emergency Department Visits



Intent	Count
Unintentional	10,868
Self-harm	2,165
Undetermined	527
Assault	32

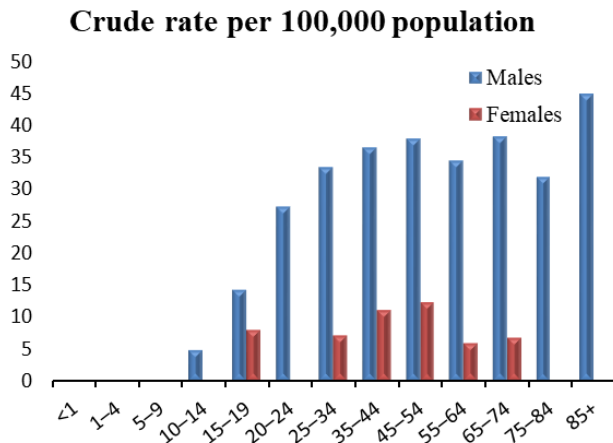
## Suicide and Self-Injury by Age and Sex

### Fatalities

Total: 736 (16.1\*)

Males: 593 (26.4\*)

Females: 143 (6.4\*)



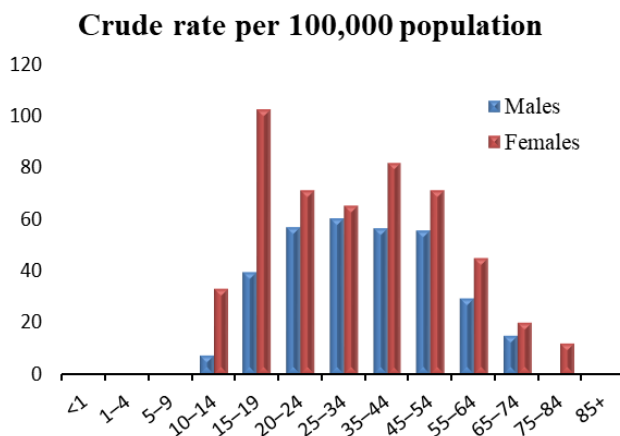
Age	Males	Females
<1	0	0
1-4	0	0
5-9	0	0
10-14	7	#
15-19	21	11
20-24	43	#
25-34	98	20
35-44	100	30
45-54	110	36
55-64	98	18
65-74	76	15
75-84	28	#
85+	12	#

### Inpatient Hospitalizations

Total: 1,886 (43.9\*)

Males: 771 (35.9\*)

Females: 1,115 (52.0\*)



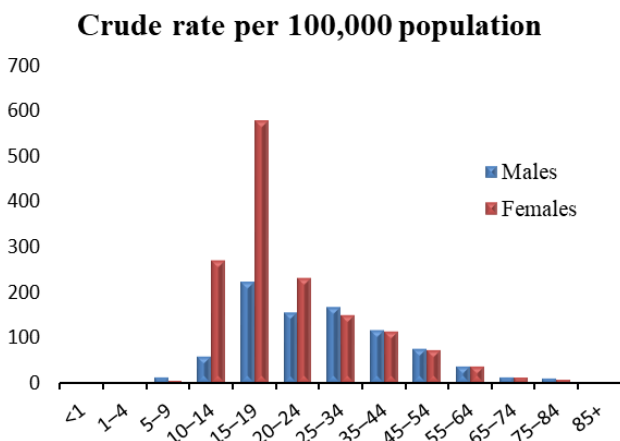
Age	Males	Females
<1	0	0
1-4	0	0
5-9	0	#
10-14	10	46
15-19	58	143
20-24	89	103
25-34	176	187
35-44	154	225
45-54	160	211
55-64	83	138
65-74	29	45
75-84	##	14
85+	#	#

### Emergency Department Visits

Total: 4,442 (107.5\*)

Males: 1,824 (86.9\*)

Females: 2,618 (129.4\*)



Age	Males	Females
<1	0	0
1-4	#	#
5-9	16	6
10-14	84	374
15-19	327	807
20-24	243	334
25-34	489	430
35-44	319	311
45-54	212	213
55-64	100	107
65-74	22	24
75-84	9	9
85+	#	#

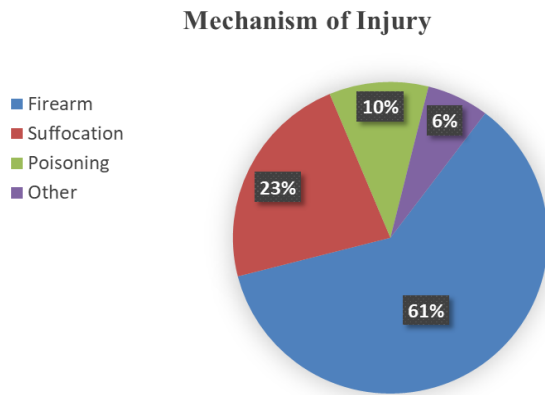
\*Age-adjusted rate per 100,000 population

#At least one but fewer than five

##Suppressed to prevent indirect disclosure

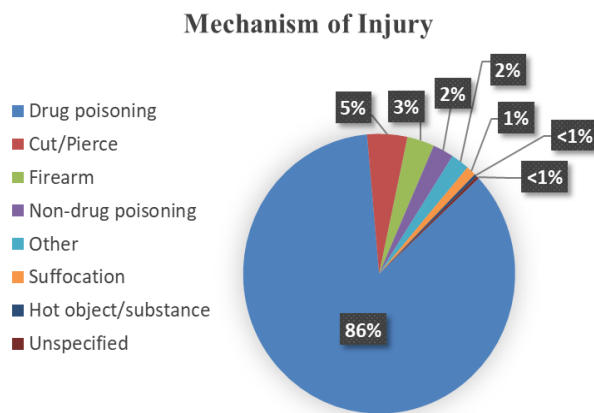
# Suicide and Self-Injury by Mechanism of Injury

## Fatalities



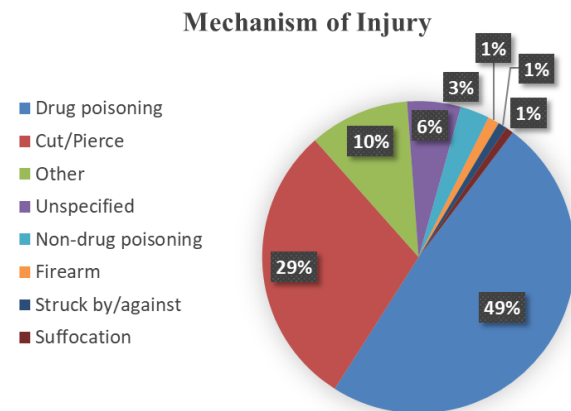
Mechanism of Injury	Count
Firearm	447
Suffocation	167
Poisoning	75
Other	47

## Inpatient Hospitalizations



Mechanism of Injury	Count
Drug poisoning	1,613
Cut/Pierce	90
Firearm	61
Non-drug poisoning	47
Other	41
Suffocation	22
Hot object/substance	6
Unspecified	6

## Emergency Department Visits



Mechanism of Injury	Count
Drug poisoning	2,165
Cut/Pierce	1,308
Other	460
Unspecified	246
Non-drug poisoning	134
Firearm	53
Struck by/against	40
Suffocation	36

# Traumatic Brain Injury by Age and Sex

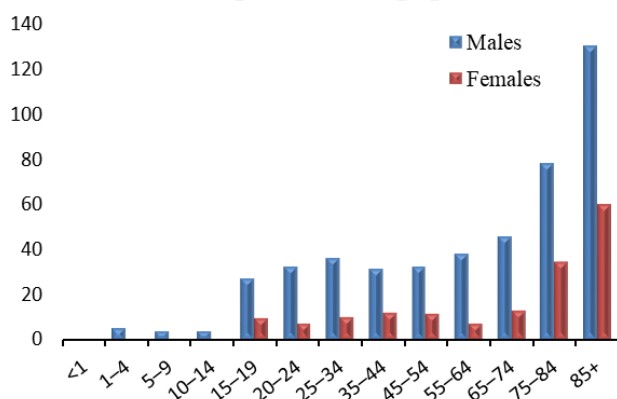
## Fatalities

Total: 954 (20.5\*)

Males: 702 (31.4\*)

Females: 252 (10.4\*)

Crude rate per 100,000 population



Age	Males	Females
<1	#	#
1-4	6	#
5-9	5	#
10-14	5	#
15-19	40	13
20-24	51	10
25-34	107	28
35-44	87	33
45-54	94	33
55-64	109	22
65-74	91	29
75-84	69	40
85+	35	32

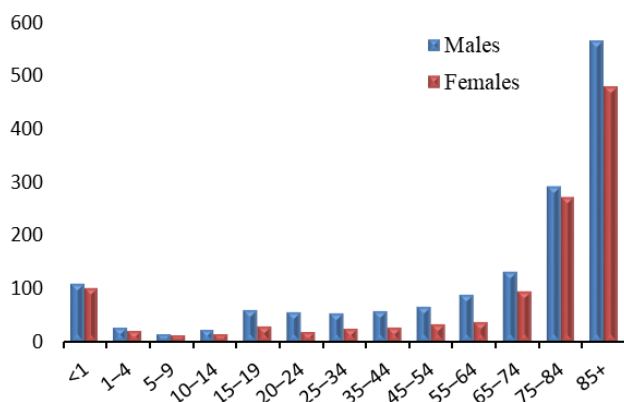
## Inpatient Hospitalizations

Total: 2,994 (62.3\*)

Males: 1,715 (77.2\*)

Females: 1,279 (48.2\*)

Crude rate per 100,000 population



Age	Males	Females
<1	30	27
1-4	29	21
5-9	19	17
10-14	33	19
15-19	88	40
20-24	88	26
25-34	157	69
35-44	158	70
45-54	192	94
55-64	252	111
65-74	261	212
75-84	257	317
85+	151	256

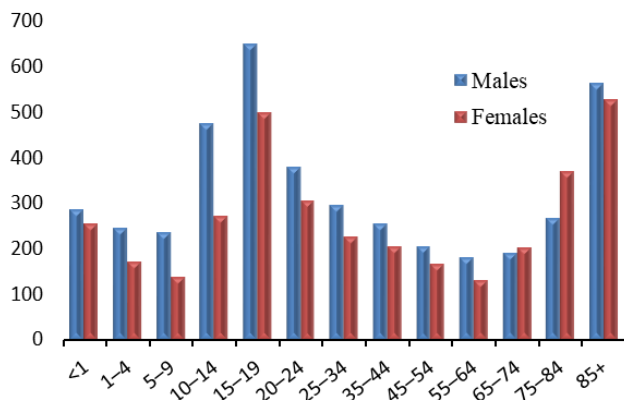
## Emergency Department Visits

Total: 11,652 (268.6\*)

Males: 6,406 (300.4\*)

Females: 5,246 (235.2\*)

Crude rate per 100,000 population



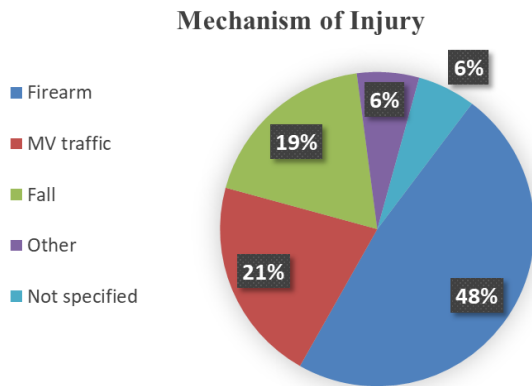
Age	Males	Females
<1	80	68
1-4	281	184
5-9	335	187
10-14	692	378
15-19	961	698
20-24	600	446
25-34	873	650
35-44	701	564
45-54	597	497
55-64	520	402
65-74	380	455
75-84	235	434
85+	151	283

\*Age-adjusted rate per 100,000 population  
 #At least one but fewer than five



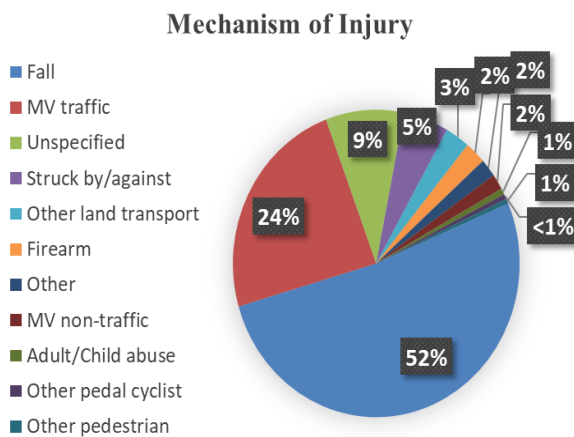
# Traumatic Brain Injury by Mechanism of Injury

## Fatalities



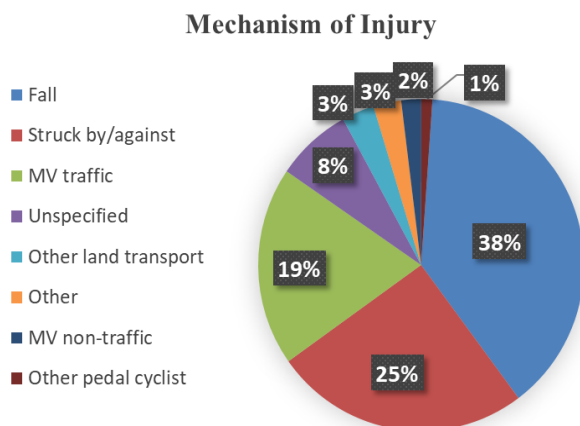
Mechanism of Injury	Count
Firearm	457
MV traffic	201
Fall	178
Other	61
Not specified	57

## Inpatient Hospitalizations



Mechanism of Injury	Count
Fall	1,553
MV traffic	713
Unspecified	264
Struck by/against	153
Other land transport	83
Firearm	71
Other	57
MV non-traffic	49
Adult/Child abuse	20
Other pedal cyclist	16
Other pedestrian	15

## Emergency Department Visits



Mechanism of Injury	Count
Fall	4,509
Struck by/against	2,952
MV traffic	2,261
Unspecified	875
Other land transport	375
Other	322
MV non-traffic	231
Other pedal cyclist	127