

# KENTUCKY INJURY INDICATORS



## 2018

**KENTUCKY VIOLENCE AND INJURY PREVENTION PROJECT (KVIPP)**

**COOPERATIVE AGREEMENT No. 5NU17CE924846**

**KENTUCKY INJURY PREVENTION AND RESEARCH CENTER**

**FEBRUARY 2021**



This page is intentionally blank.

## **ACKNOWLEDGMENTS**

This report is funded through the Core State Violence and Injury Prevention Program by the National Center on Injury Prevention and Control and the Centers for Disease Control and Prevention, Agreement No. 5NU17CE924846.

### **Prepared by**

**Lara Daniels  
Ashley M. Bush**

### **Released by**

Kentucky Injury Prevention and Research Center  
University of Kentucky College of Public Health  
Lexington, Kentucky 40504

Suggested citation: Kentucky Injury Indicators, 2018 Report. Lexington (KY): University of Kentucky, Kentucky Injury Prevention and Research Center; 2021.

This page is intentionally blank.

## TABLE OF CONTENTS

Abbreviations .....	1
Executive Summary .....	2
Data Sources and Methods.....	3
<b>10 Leading Causes of Injury by Age Group and Intent</b>	
Definitions for Injury Data Matrices .....	5
Fatalities .....	6
Inpatient Hospitalizations .....	7
Emergency Department Visits.....	8
<b>Injury Indicators</b>	
All Injuries .....	9
Unintentional Falls.....	11
Unintentional Fire-Related Injuries .....	13
Firearm-Related Injuries.....	15
Homicide and Assault.....	17
Unintentional Motor Vehicle Traffic Crashes .....	19
Non-Drug Poisoning .....	21
Drug Poisoning .....	23
Suicide and Self-Injury .....	25
Traumatic Brain Injury .....	27

## Abbreviations

CDC	Centers for Disease Control and Prevention
CSTE	Council of State and Territorial Epidemiologists
ED	emergency department
ICD	International Classification of Diseases
ICD-CM	International Classification of Diseases, Clinical Modifications
KIPRC	Kentucky Injury Prevention and Research Center
MV	motor vehicle
ATV	all-terrain vehicle
PCR	police collision report
TBI	traumatic brain injury

## Executive Summary

Kentucky's overall age-adjusted injury mortality rate was 84.4 per 100,000 Kentucky resident population in 2018. The male and female age-adjusted rates were 118.9 and 51.5, respectively.

The age-adjusted rate for injury-related inpatient hospitalizations per 100,000 population was 475.5 per 100,000 Kentucky resident population in 2018. The male and female age-adjusted rates were 466.6 and 469.0, respectively.

The age-adjusted rate for injury-related emergency department visit discharges per 100,000 Kentucky resident population was 10,850 in 2018. The male and female age-adjusted rates were 11,028.4 and 10,614.1, respectively.

### **Fatalities**

There were 3,841 injury fatalities among Kentucky residents in 2018. The leading mechanisms of injury fatality for Kentucky residents in 2018 were *poisonings* (1,319), *firearms* (719), and *motor vehicle traffic crashes* (626). Ninety five percent of the poisonings were drug poisonings. Among the drug poisonings (1,250), 95% were unintentional drug overdoses involving prescription medications and/or illicit drugs. The leading injury mechanisms among intentional deaths (suicides and homicides) were *firearms* (68%) and *suffocation/hanging* (19%).

There were 962 fatalities from traumatic brain injuries (TBI), where TBI was reported as a cause of death on the death certificate alone or in combination with other injuries or conditions. TBI-related fatalities were either intentional (50%) or unintentional (50%).

### **Inpatient Hospitalizations**

There were 23,379 injury-related inpatient hospitalization encounters among Kentucky residents in 2018. The leading mechanisms of injury-related inpatient hospitalizations were *falls* (11,991), *drug poisonings* (3,609), and *motor vehicle traffic crashes* (2,474). The majority of unintentional fall-related hospitalizations occurred among Kentucky residents age 55 years and older (88%). Of the 3,609 drug poisonings, 2,007 (56%) were unintentional and 1,483 (41%) were self-directed/inflicted. The leading mechanism of intentional injury-related inpatient hospitalizations was *drug poisoning* (61%).

TBI (either TBI alone or in combination with other injuries) accounted for 2,854 hospitalizations. The majority of the TBI-related inpatient hospitalizations were unintentional (87%). *Falls* (54%) and *motor vehicle traffic crashes* (24%) were the leading mechanisms of TBI-related hospitalizations.

### **Emergency Department Visits**

There were 472,787 injury-related emergency department (ED) visits among Kentucky residents in 2018. The leading mechanisms of injury-related ED visits were *falls* (144,972), being *struck by or against an object or person* (60,920), and *motor vehicle traffic crashes* (52,999). The leading mechanism of intentional injury-related ED visits was *struck by/against* (53%).

TBI (either TBI alone or in combination with other injuries) accounted for 11,608 ED visits. The majority of the TBI-related ED visits were unintentional (85%). *Falls* (41%) and *struck by/against* (25%) were the leading mechanisms of TBI-related ED visits.

# Data Sources and Methods

## Data Sources

All data are provisional and subject to change.

### *Population Data*

U.S. Census, Population Division. "Annual Estimates of the Resident Population by Single Year of Age and Sex for the U.S., States, and Puerto Rico Commonwealth: 2018 Population Estimates". Population is limited to Kentucky residents.

### *Mortality Data*

Kentucky Death Certificate Database, Kentucky Office of Vital Statistics, Cabinet for Health and Family Services, Frankfort, KY.

### *Inpatient Hospitalization Discharge Data*

Kentucky Inpatient Hospitalization Claims Files, Office of Health Data and Analytics, Cabinet for Health and Family Services, Frankfort, KY. Note: Counts represent encounters of care and could be greater than the number of individual patients treated at an acute care facility.

### *Emergency Department Visit Discharge Data*

Kentucky Outpatient Services Database, Office of Health Data and Analytics, Cabinet for Health and Family Services, Frankfort, KY. Note: Counts represent encounters of care and could be greater than the number of individual patients treated.

## Methods

All data were limited to Kentucky residents.

### *Injury Fatalities*

The definitions for fatal injuries used in this report correspond to the Centers for Disease Control and Prevention (CDC)'s "State injury indicators report: Instructions for preparing 2017 data." The underlying cause of death field was used to identify the mechanism and manner of fatal injuries.

**PLEASE NOTE:** *Death counts in this report are based on state death certificate files and thus cannot be expected to match counts based on other sources. In particular, numbers of motor vehicle traffic deaths will not match those based on police collision reports (PCRs) because the two systems do not report on identical underlying populations. Death certificates capture deaths of Kentucky residents regardless of where they occur; PCRs capture deaths that occur on Kentucky roads only, regardless of state of residence. Similarly, counts of homicides and assaults in this report will not match counts based on police crime reports. These data sources should be viewed as complementary. There also exist specialized, death certificate-based surveillance systems for injury fatalities at both the state (e.g., the Kentucky Violent Death Reporting System and Child Fatality Reviews) and national levels (e.g., CDC's Web-Based Injury Statistics Query and Reporting System/WISQARS™ and Wide-ranging Online Data for Epidemiologic Research/WONDER). Counts from those systems may not exactly match counts in this report due to differences in inclusion criteria, case definitions, the use of ancillary data sources for case identification, or other factors.*



### *Injury Inpatient Hospitalizations*

The definitions for injury hospitalizations used in this report correspond to the Council for State and Territorial Epidemiologists (CSTE) Injury Surveillance Toolkit. Hospitalizations were limited to discharges from nonfederal, acute care, or inpatient facilities. Note inpatient hospitalizations resulting in death were not excluded from the total inpatient injury hospitalization counts. CDC's proposed surveillance definitions for injury hospitalizations were used; only initial encounters were included (indicated by a seventh character of "A" or missing in the International Classification of Diseases, Tenth Revision, Clinical Modification [ICD-10-CM] code). The injury subset for hospitalizations was created by selecting discharges having a principal diagnosis code. The CDC's ICD-10-CM Poisoning and Non-Poisoning Matrices were used to categorize the injuries by mechanism and intent. The external causes of morbidity, which were used to provide injury details (e.g., intent, mechanism), are not required for discharge billing purposes; therefore, every injury hospitalization may not have this level of detail.

***PLEASE NOTE:*** *In October 2015, healthcare discharge data (injury hospitalization encounters) coding systems transitioned from ICD-9-CM to ICD-10-CM. The coding system transition should be considered when interpreting the data, and trend analysis using ICD-9-CM coded data for some years and ICD-10-CM coded data for other years is not recommended due to substantial differences and a lack of one-to-one correspondence between ICD-9-CM and ICD-10-CM.*

### *Injury Emergency Department Visits*

The definitions for injury emergency department (ED) visits used in this report correspond to the CSTE Injury Surveillance Toolkit. Note ED visits resulting in inpatient hospitalization or death were not excluded from the total ED injury counts. The CDC's proposed surveillance definitions for injury ED visits were used; only initial encounters were included (seventh character of "A" or missing) in the ED dataset using diagnosis codes or external cause codes. The CDC's ICD-10-CM Poisoning and Non-Poisoning Matrices were used to categorize the injuries by mechanism and intent. The external causes of morbidity, which were used to provide injury details (e.g., intent, mechanism) are not required for discharge billing purposes; therefore, every injury ED visit may not have this level of detail.

***PLEASE NOTE:*** *In October 2015, healthcare discharge data (emergency department visit encounters) coding systems transitioned from ICD-9-CM to ICD-10-CM. The coding system transition should be considered when interpreting the data, and trend analysis using ICD-9-CM coded data for some years and ICD-10-CM coded data for other years is not recommended due to substantial differences and a lack of one-to-one correspondence between ICD-9-CM and ICD-10-CM.*

### *Calculation of Rates and Data Presentation*

Two types of rates are reported. Age-specific ("crude") rates were calculated by dividing the number of injury events occurring in a particular age group by the estimated number of Kentucky residents in that age group in 2018 and multiplying by 100,000. Age-adjusted rates were adjusted to the year 2000 standard population. Rates based on counts of 20 or fewer may be unstable.

Data are presented as aggregated counts. Certain counts have been suppressed because either the observed number of injury events is very small (a count of at least one but fewer than five) and not appropriate for publication or the count can be used to calculate the number in a count that has been suppressed.

## ***Definitions for “Leading Cause” by Age Group and Intent Injury Mortality and Discharge Data Matrices***

Motor vehicle non-traffic (MV non-traffic)—Includes motor vehicle crashes that occurred somewhere other than on a public roadway.

Motor vehicle traffic (MV traffic)—This includes crashes that occurred on a public roadway and involved at least one motor vehicle. All persons injured in MV traffic incidents are counted here. Pedal cyclists and pedestrians who were struck by a motor vehicle would be counted here, but those who crashed on a public roadway without involvement of a motor vehicle would be counted elsewhere (see “Pedal Cyclist, Other” definition).

Natural/Environmental—Natural or environmental causes (insect bites and stings, animal bites, extreme weather, excessive heat or cold, etc.).

Other Land Transport—Other land transportation. Includes motor vehicle crashes that occurred somewhere other than on a public roadway, rail injuries, etc. Does not include air or water injuries.

Other Specified—Other specified cause of injury. Includes a variety of relatively low-incidence causes of injury grouped together. Includes causes not elsewhere classified; an external cause of injury code that is intended for use when no other code exists to adequately describe the mechanism and manner of injury.

Pedal Cyclist, Other—Includes pedal cyclists who crashed on a public roadway without involvement of a motor vehicle.

Poisoning—Includes drug and non-drug poisonings, unless otherwise noted.

Tie—Indicates a tied count for a leading cause of injury-related mortality or morbidity.

Unspecified—Injuries for which an external code of injury either (a) was not specified or (b) was specified but did not indicate the mechanism or manner of injury.

## 10 Leading Causes of Injury-Related Mortality by Age Group and Intent, 2018 Kentucky Residents

Rank	Under 12 years old	12-17 years old	18-24 years old	25-34 years old	35-44 years old	45-54 years old	55-64 years old	65 years and older
1	Motor Vehicle Traffic 11	Motor Vehicle Traffic 20	Motor Vehicle Traffic 80	Poisoning 317	Poisoning 333	Poisoning 282	Poisoning 189	Fall 265
2	Suffocation 10	Suffocation 10	Poisoning 73	Motor Vehicle Traffic 90	Motor Vehicle Traffic 96	Motor Vehicle Traffic 95	Motor Vehicle Traffic 99	Unspecified 166
3	Drowning 9	Firearm 9	Firearm 47	Firearm 59	Firearm 72	Firearm 94	Firearm 81	Motor Vehicle Traffic 135
4	Fire/Flame 7	Firearm 8	Firearm 36	Firearm 48	Firearm 49	Suffocation 34	Suffocation 22	Firearm 130
5		Suffocation 28	Suffocation 28	Suffocation 43	Suffocation 35	Firearm 20	Unspecified 21	Suffocation 59
6		Firearm 7	Firearm 7	Tie* 9	Poisoning 10	Poisoning 13	Fall 19	Poisoning 36
7				Drowning 6	Fire/Flame 9	Other Land Transport 12	Fire/Flame 13	Natural/Environmental 17
8				Tie* 5	Tie* 7	Tie* 11	Tie* 11	Fire/Flame 15
9					Fall 6	Tie* 8	Other Land Transport 8	Firearm 13
10					Cut/Pierce 5	Fire/Flame 7	Natural/Environmental 7	Tie* 11

<b>Unintentional</b>	<b>Injury Intent</b>	<b>Undetermined</b>
<b>Suicide</b>	<b>Homicide</b>	

\*Indicates a tied count for leading injury-related deaths. Counts less than five are not included in this matrix. Produced by the Kentucky Injury Prevention and Research Center, as bona fide agent for the Kentucky Department for Public Health, February 2021. This product was supported by grants numbers 5NU17CE924846 (Centers for Disease Control and Prevention) and 3048114413. Data source: Kentucky Death Certificate Database, Kentucky Office of Vital Statistics, Cabinet for Health and Family Services. Data are provisional and subject to change.



## 10 Leading Causes of Injury-Related Inpatient Hospitalizations by Age Group and Intent, 2018 Kentucky Residents

Rank	Under 12 years old	12-17 years old	18-24 years old	25-34 years old	35-44 years old	45-54 years old	55-64 years old	65 years and older
1	Fall 129	Drug Poisoning 164	Motor Vehicle Traffic 315	Motor Vehicle Traffic 389	Drug Poisoning 411	Fall 668	Fall 1,573	Fall 8,999
2	Child/ Adult Abuse 65	Motor Vehicle Traffic 92	Drug Poisoning 237	Drug Poisoning 365	Motor Vehicle Traffic 404	Drug Poisoning 358	Motor Vehicle Traffic 380	Motor Vehicle Traffic 484
3	Motor Vehicle Traffic 56	Fall 61	Drug Poisoning 116	Drug Poisoning 265	Fall 317	Motor Vehicle Traffic 348	Drug Poisoning 369	Drug Poisoning 350
4	Hot Object/Substance 28	Motor Vehicle Non-Traffic 39	Fall 65	Fall 169	Drug Poisoning 282	Drug Poisoning 282	Drug Poisoning 163	Tie* 159
5	Drug Poisoning 23	Struck By/Against 21	Firearm 60	Firearm 54	Tie* 48	Motor Vehicle Non-Traffic 48	Unspecified 64	Drug Poisoning 85
6	Bite/Sting 16	Firearm 17	Motor Vehicle Non-Traffic 50	Motor Vehicle Non-Traffic 51	Unspecified 43	Struck By/Against 46	Struck By/Against 54	Overexertion 51
7	Struck By/Against 15	Drug Poisoning 15	Firearm 47	Struck By/Against 37	Tie* 33	Unspecified 43	Motor Vehicle Non-Traffic 49	Motor Vehicle Non-Traffic 49
8	Foreign Body 14	Firearm 11	Struck By/Against 18	Cut/Pierce 35	Tie* 31	Struck By/Against 37	Natural/ Environmental 34	Natural/ Environmental 47
9	Tie* 12	Other Land Transport 10	Cut/Pierce 16	Tie* 26	Firearm 30	Non-Drug Poisoning 32	Other Land Transport 30	Foreign Body 45
10	Other Specified 11	Tie* 7	Tie* 15	Firearm 25	Other Land Transport 28	Drug Poisoning 27	Non-Drug Poisoning 28	Suffocation 34

Injury Intent		
Unintentional	Self-Harm	Assault
Undetermined		

\*Indicates a tied count for leading injury-related inpatient hospitalizations. Counts represent encounters of care and could be greater than the number of individual patients treated at an acute care facility. Counts less than five are not included in this matrix. Produced by the Kentucky Injury Prevention and Research Center, as a bona fide agent for the Kentucky Department for Public Health, February 2021. This product was supported by grants numbers 5NU17CE924846 (Centers for Disease Control and Prevention) and 3048114413. Data source: Kentucky Inpatient Hospitalization Claims Files, Office of Health Data and Analytics. Data are provisional and subject to change.



## 10 Leading Causes of Injury-Related Emergency Department Visits by Age Group and Intent, 2018 Kentucky Residents

Rank	Under 12 years old	12-17 years old	18-24 years old	25-34 years old	35-44 years old	45-54 years old	55-64 years old	65 years and older
1	Fall 26,089	Fall 8,582	Motor Vehicle Traffic 9,487	Fall 11,715	Fall 13,299	Fall 16,138	Fall 18,283	Fall 43,325
2	Struck By/Against 10,706	Struck By/Against 7,745	Fall 7,501	Motor Vehicle Traffic 10,575	Motor Vehicle Traffic 8,403	Motor Vehicle Traffic 7,008	Motor Vehicle Traffic 5,287	Unspecified 4,348
3	Unspecified 5,930	Motor Vehicle Traffic 4,104	Struck By/Against 5,890	Struck By/Against 6,937	Unspecified 5,814	Unspecified 5,189	Unspecified 3,809	Motor Vehicle Traffic 4,322
4	Bite/Sting 5,148	Overexertion 3,980	Cut/Pierce 4,164	Unspecified 6,120	Struck By/Against 5,793	Struck By/Against 4,701	Struck By/Against 3,444	Struck By/Against 4,099
5	Motor Vehicle Traffic 3,744	Unspecified 3,321	Overexertion 4,015	Overexertion 5,693	Overexertion 5,506	Overexertion 4,588	Overexertion 2,872	Cut/Pierce 2,346
6	Cut/Pierce 3,739	Cut/Pierce 2,259	Unspecified 3,787	Cut/Pierce 5,511	Cut/Pierce 4,453	Cut/Pierce 3,625	Cut/Pierce 2,752	Overexertion 2,291
7	Overexertion 2,369	Bite/Sting 1,209	Struck By/Against 2,134	Struck By/Against 2,906	Struck By/Against 2,294	Bite/Sting 2,178	Bite/Sting 1,668	Bite/Sting 1,616
8	Other Specified 2,081	Struck By/Against 1,143	Bite/Sting 1,823	Drug Poisoning 2,606	Bite/Sting 2,262	Struck By/Against 1,490	Struck By/Against 825	Foreign Body 826
9	Foreign Body 2,011	Other Specified 847	Other Specified 1,224	Bite/Sting 2,502	Drug Poisoning 1,772	Drug Poisoning 1,060	Drug Poisoning 676	Drug Poisoning 593
10	Hot Object/Substance 949	Motor Vehicle Non-Traffic 693	Motor Vehicle Non-Traffic 1,079	Other Specified 1,508	Other Specified 1,213	Other Specified 1,004	Other Specified 620	Other Specified 565

Injury Intent		
<b>Unintentional</b>	<b>Self-Harm</b>	<b>Assault</b>
<b>Undetermined</b>		

Counts represent encounters of care and could be greater than the number of individual patients treated. Counts less than five are not included in this matrix. Produced by the Kentucky Injury Prevention and Research Center, as bona fide agent for the Kentucky Department for Public Health. February 2021. This product was supported by grants numbers 5NU170E924846 (Centers for Disease Control and Prevention) and 3048114413. Data source: Kentucky Outpatient Services Database, Office of Health Data and Analytics. Data are provisional and subject to change.



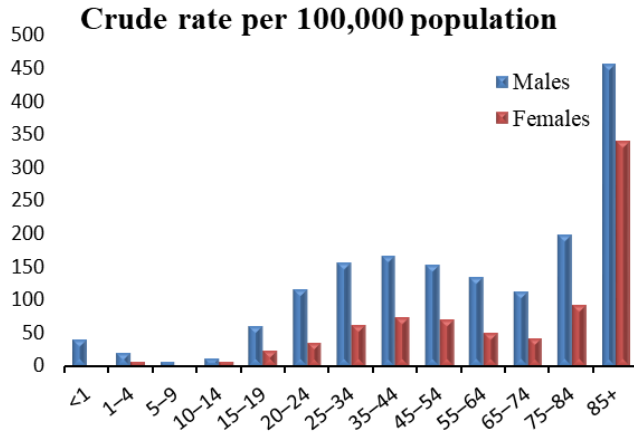
# All Injuries by Age and Sex

## Fatalities

Total: 3,841 (84.4\*)

Males: 2,604 (118.9\*)

Females: 1,237 (51.5\*)



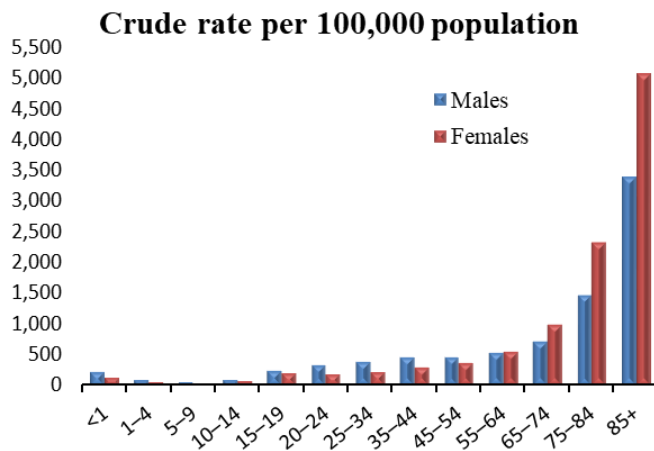
Age	Males	Females
<1	11	##
1-4	23	7
5-9	8	#
10-14	15	8
15-19	88	33
20-24	179	50
25-34	463	175
35-44	458	204
45-54	436	204
55-64	388	156
65-74	227	96
75-84	183	113
85+	125	183

## Inpatient Hospitalizations

Total: 23,379 (475.5\*)

Males: 10,384 (466.6\*)

Females: 12,995 (469.0\*)



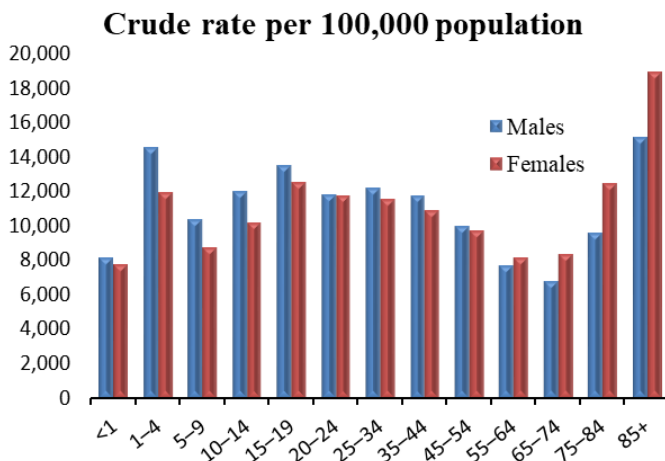
Age	Males	Females
<1	66	38
1-4	107	76
5-9	83	51
10-14	139	108
15-19	372	291
20-24	523	284
25-34	1,144	644
35-44	1,301	825
45-54	1,323	1,072
55-64	1,544	1,745
65-74	1,486	2,302
75-84	1,365	2,829
85+	931	2,730

## Emergency Department Visits

Total: 472,787 (10,850.0\*)

Males: 235,533 (11,028.4\*)

Females: 237,254 (10,614.1\*)



Age	Males	Females
<1	2,271	2,043
1-4	16,502	12,955
5-9	14,763	11,747
10-14	17,500	14,246
15-19	19,914	17,494
20-24	18,408	17,062
25-34	36,304	33,180
35-44	32,367	30,257
45-54	28,541	28,368
55-64	22,193	25,202
65-74	13,801	19,327
75-84	8,823	15,175
85+	4,146	10,198

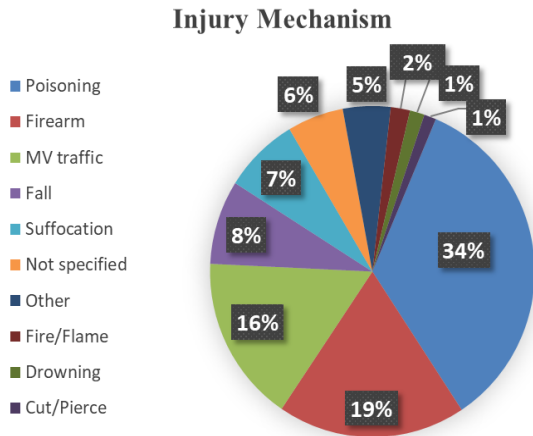
\*Age-adjusted rate per 100,000 population

#At least one but fewer than five

##Suppressed to prevent indirect disclosure

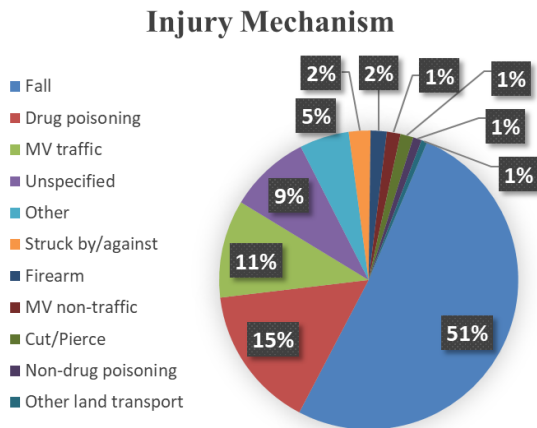
# All Injuries by Injury Mechanism

## Fatalities



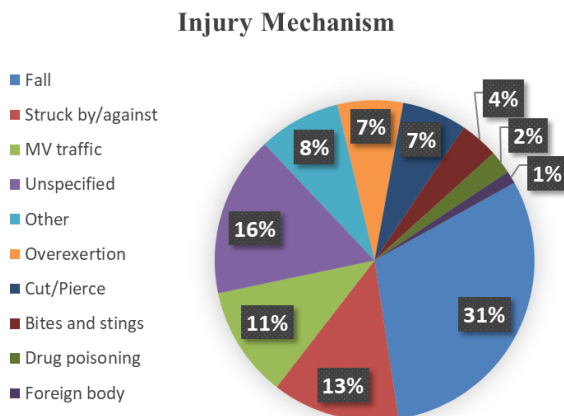
Injury Mechanism	Count
Poisoning	1,319
Firearm	719
MV traffic	626
Fall	316
Suffocation	288
Not specified	215
Other	182
Fire/Flame	74
Drowning	56
Cut/Pierce	46

## Inpatient Hospitalizations



Injury Mechanism	Count
Fall	11,991
Drug poisoning	3,609
MV traffic	2,474
Unspecified	2,057
Other	1,253
Struck by/against	550
Firearm	407
MV non-traffic	346
Cut/Pierce	328
Non-drug poisoning	216
Other land transport	148

## Emergency Department Visits



Injury Mechanism	Count
Fall	144,972
Struck by/against	60,920
MV traffic	52,999
Unspecified	76,738
Other	39,378
Overexertion	31,314
Cut/Pierce	30,943
Bites and stings	18,473
Drug poisoning	11,076
Foreign body	5,974

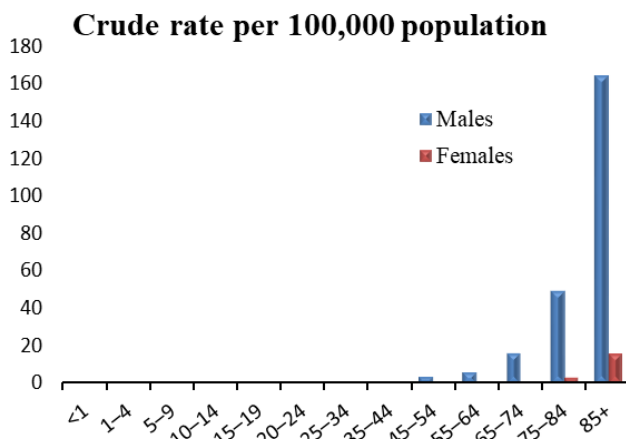
# Unintentional Falls by Age and Sex

## Fatalities

Total: 303 (5.8\*)

Males: 160 (7.3\*)

Females: 143 (4.4\*)



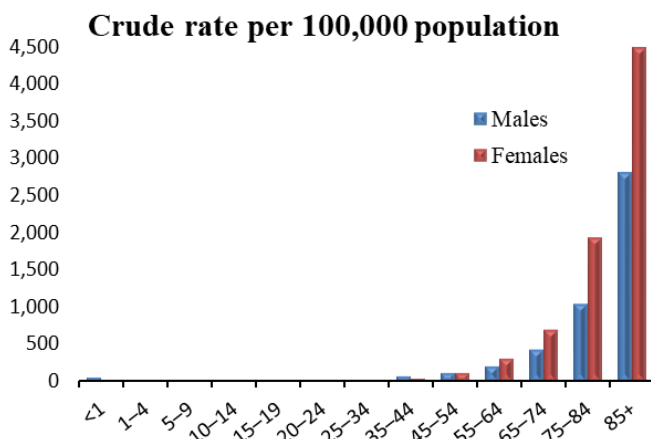
Age	Males	Females
<1	0	0
1-4	0	0
5-9	0	0
10-14	0	0
15-19	0	0
20-24	#	0
25-34	#	0
35-44	##	0
45-54	11	0
55-64	17	#
65-74	33	##
75-84	46	40
85+	45	84

## Inpatient Hospitalization

Total: 11,979 (226.6\*)

Males: 4,036 (178.0\*)

Females: 7,943 (259.6\*)



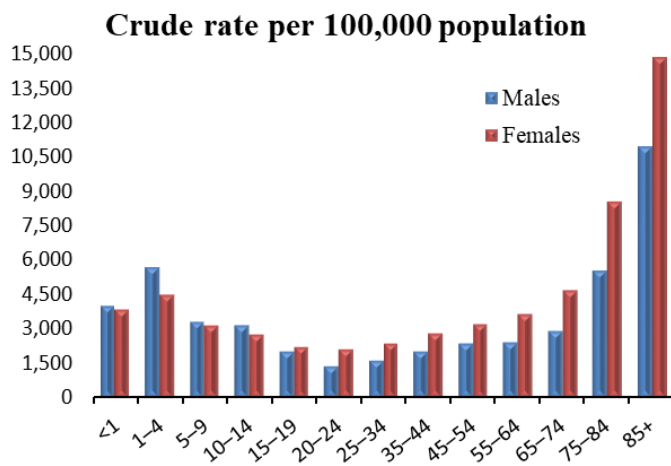
Age	Males	Females
<1	19	9
1-4	24	18
5-9	30	17
10-14	36	8
15-19	40	10
20-24	32	12
25-34	103	66
35-44	190	127
45-54	324	344
55-64	622	951
65-74	893	1,618
75-84	956	2,352
85+	767	2,411

## Emergency Department Visits

Total: 144,925 (3,158.2\*)

Males: 60,315 (2,778.8\*)

Females: 84,610 (3,487.3\*)



Age	Males	Females
<1	1,124	1,009
1-4	6,466	4,859
5-9	4,706	4,238
10-14	4,617	3,879
15-19	2,992	3,091
20-24	2,140	3,050
25-34	4,887	6,828
35-44	5,570	7,728
45-54	6,746	9,392
55-64	6,989	11,291
65-74	5,975	10,893
75-84	5,120	10,377
85+	2,983	7,975

\*Age-adjusted rate per 100,000 population

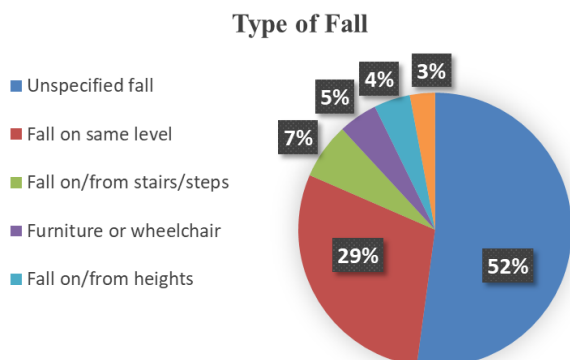
#At least one but fewer than five

##Suppressed to prevent indirect disclosure



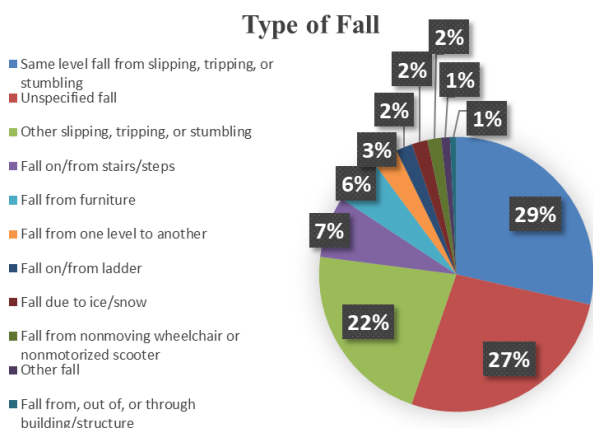
# Unintentional Falls by Type of Fall

## Fatalities



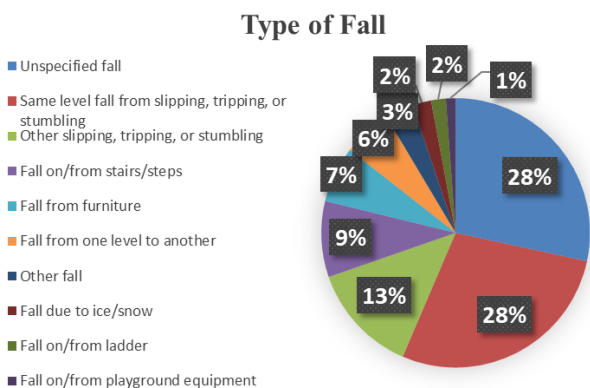
Type of Fall	Count
Unspecified fall	158
Fall on same level	89
Fall on/from stairs/steps	20
Furniture or wheelchair	14
Fall on/from heights	13
Other fall from one level to another	9

## Inpatient Hospitalizations



Type of Fall	Count
Same level fall from slipping, tripping, or stumbling	3,420
Unspecified fall	3,204
Other slipping, tripping, or stumbling	2,604
Fall on/from stairs/steps	866
Fall from furniture	670
Fall from one level to another	356
Fall on/from ladder	231
Fall due to ice/snow	221
Fall from nonmoving wheelchair or nonmotorized scooter	194
Other fall	123
Fall from, out of, or through building/structure	90

## Emergency Department Visits



Type of Fall	Count
Unspecified fall	41,132
Same level fall from slipping, tripping, or stumbling	40,675
Other slipping, tripping, or stumbling	19,187
Fall on/from stairs/steps	13,214
Fall from furniture	9,791
Fall from one level to another	8,498
Other fall	4,901
Fall due to ice/snow	3,276
Fall on/from ladder	2,553
Fall on/from playground equipment	1,698

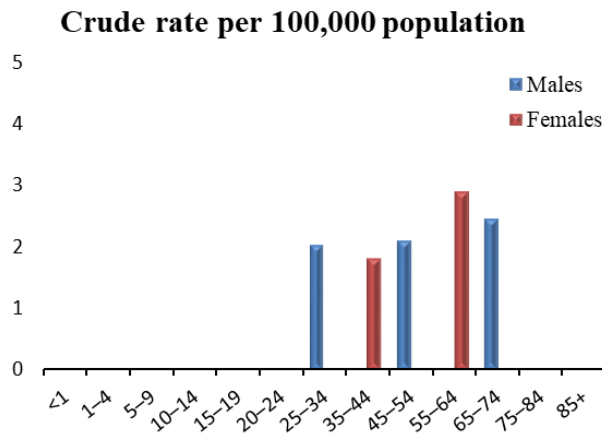
## Unintentional Fire-Related Injuries by Age and Sex

### Fatalities

Total: 64 (1.4\*)

Males: 36 (1.6\*)

Females: 28 (1.1\*)



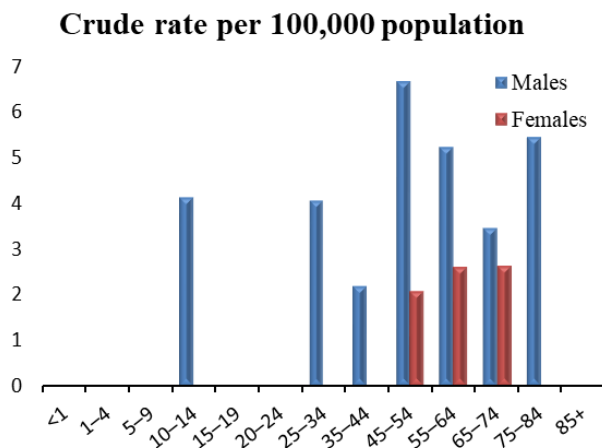
Age	Males	Females
<1	#	0
1-4	#	0
5-9	#	#
10-14	0	#
15-19	0	0
20-24	#	#
25-34	6	#
35-44	#	5
45-54	6	#
55-64	#	9
65-74	5	#
75-84	#	#
85+	#	0

### Inpatient Hospitalizations

Total: 106 (2.2\*)

Males: 77 (3.4\*)

Females: 29 (1.2\*)



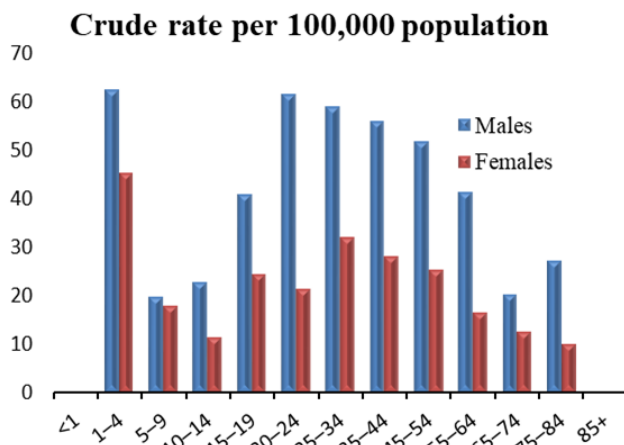
Age	Males	Females
<1	0	0
1-4	0	#
5-9	#	#
10-14	6	#
15-19	#	0
20-24	#	0
25-34	12	#
35-44	6	#
45-54	19	6
55-64	15	8
65-74	7	6
75-84	5	0
85+	#	0

### Emergency Department Visits

Total: 1,465 (34.0\*)

Males: 967 (44.8\*)

Females: 498 (23.2\*)



Age	Males	Females
<1	##	#
1-4	71	49
5-9	28	24
10-14	33	16
15-19	60	34
20-24	96	31
25-34	175	92
35-44	154	78
45-54	148	74
55-64	119	51
65-74	41	29
75-84	25	12
85+	#	#

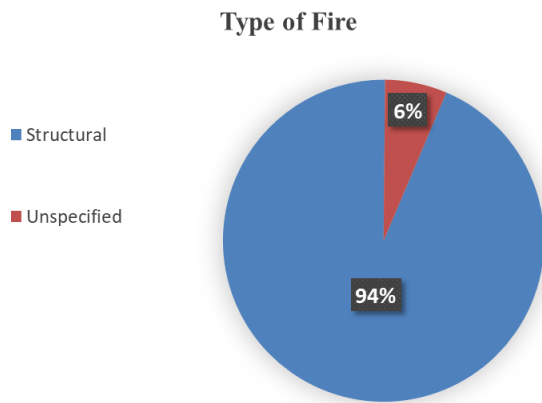
\*Age-adjusted rate per 100,000 population

#At least one but fewer than five

##Suppressed to prevent indirect disclosure

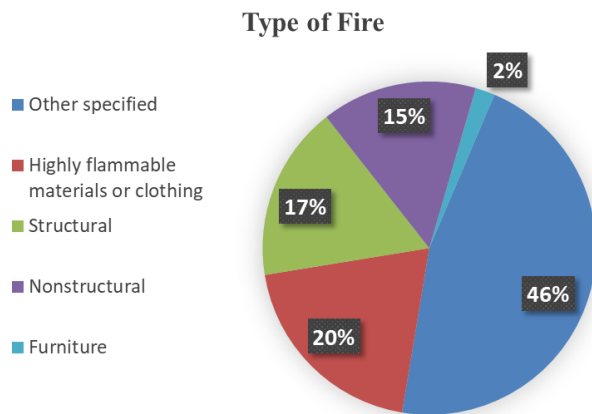
# Unintentional Fire-Related Injuries by Type of Fire

## Fatalities



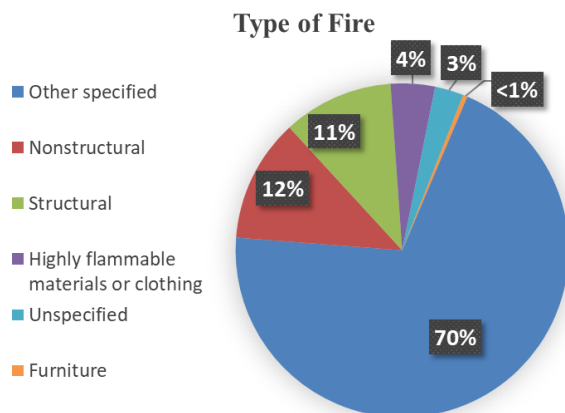
Type of Fire	Count
Structural	##
Unspecified	#

## Inpatient Hospitalizations



Type of Fire	Count
Other specified	49
Highly flammable materials or clothing	21
Structural	18
Nonstructural	##
Furniture	#

## Emergency Department Visits



Type of Fire	Count
Other specified	1,023
Nonstructural	175
Structural	157
Highly flammable materials or clothing	63
Unspecified	41
Furniture	6

#At least one but fewer than five

##Suppressed to prevent indirect disclosure

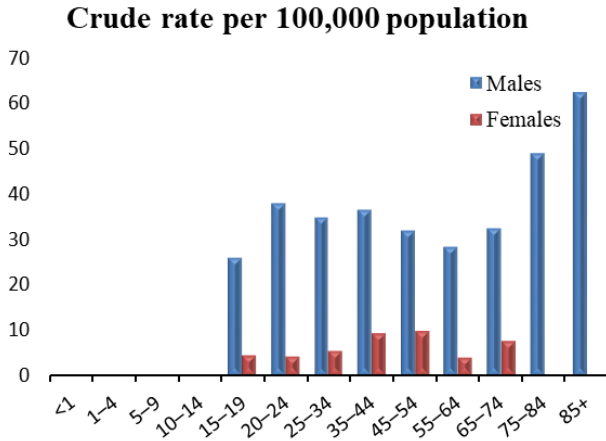
# Firearm-Related Injuries by Age and Sex

## Fatalities

Total: 719 (15.9\*)

Males: 606 (27.4\*)

Females: 113 (5.1\*)



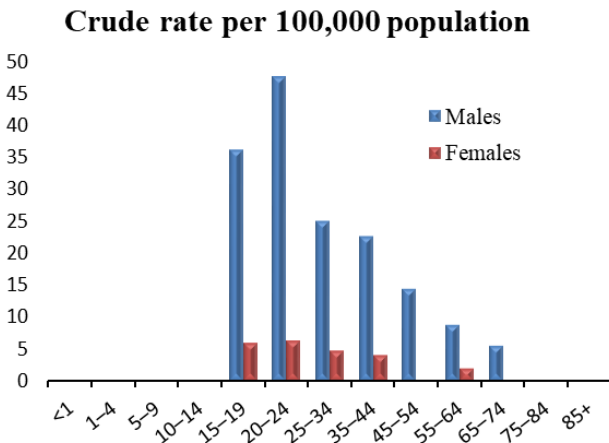
Age	Males	Females
<1	0	0
1-4	#	0
5-9	#	0
10-14	#	#
15-19	38	6
20-24	59	6
25-34	103	15
35-44	100	25
45-54	91	28
55-64	81	12
65-74	66	17
75-84	45	#
85+	17	#

## Inpatient Hospitalizations

Total: 407 (9.6\*)

Males: 351 (16.4\*)

Females: 56 (2.6\*)



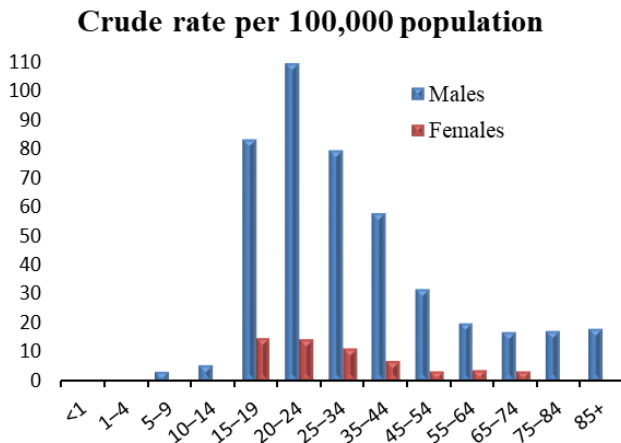
Age	Males	Females
<1	0	0
1-4	#	0
5-9	#	0
10-14	#	#
15-19	53	8
20-24	74	9
25-34	74	13
35-44	62	11
45-54	41	#
55-64	25	6
65-74	11	#
75-84	#	#
85+	#	0

## Emergency Department Visits

Total: 1,034 (24.3\*)

Males: 908 (42.6\*)

Females: 126 (5.9\*)

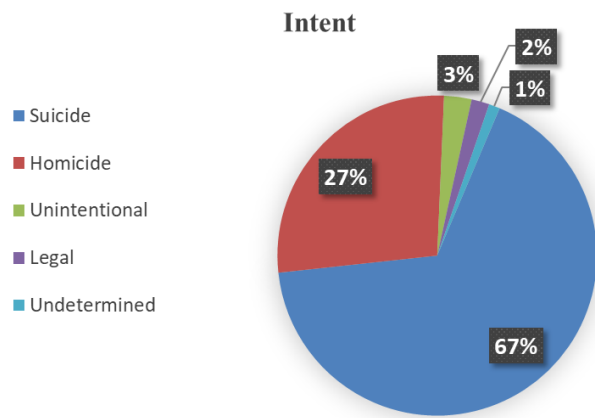


Age	Males	Females
<1	#	0
1-4	#	#
5-9	5	0
10-14	8	#
15-19	122	20
20-24	170	20
25-34	235	31
35-44	159	19
45-54	91	10
55-64	57	12
65-74	35	8
75-84	16	0
85+	5	0

\*Age-adjusted rate per 100,000 population  
 #At least one but fewer than five

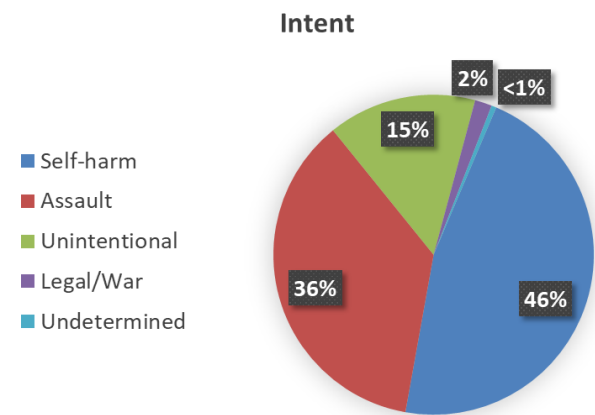
# Firearm-Related Injuries by Intent

## Fatalities



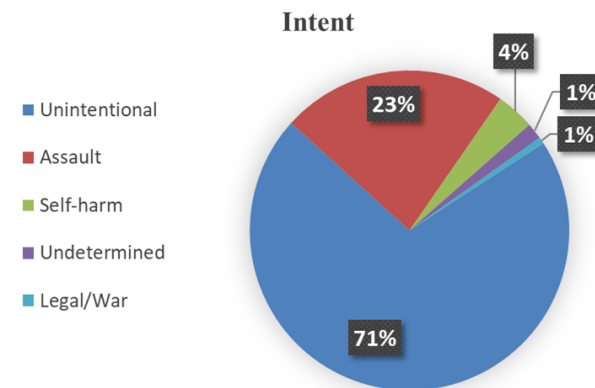
Intent	Count
Suicide	481
Homicide	197
Unintentional	20
Undetermined	13
Legal	8

## Inpatient Hospitalizations



Intent	Count
Self-harm	189
Assault	148
Unintentional	61
Legal/War	##
Undetermined	#

## Emergency Department Visits



Intent	Count
Unintentional	733
Assault	237
Self-harm	40
Undetermined	17
Legal/War	7

#At least one but fewer than five

##Suppressed to prevent indirect disclosure

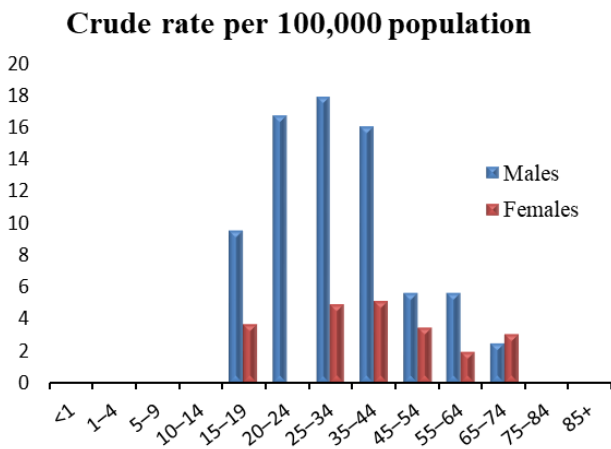
# Homicide and Assault by Age and Sex

## Fatalities

Total: 245 (5.8\*)

Males: 184 (8.7\*)

Females: 61 (2.8\*)



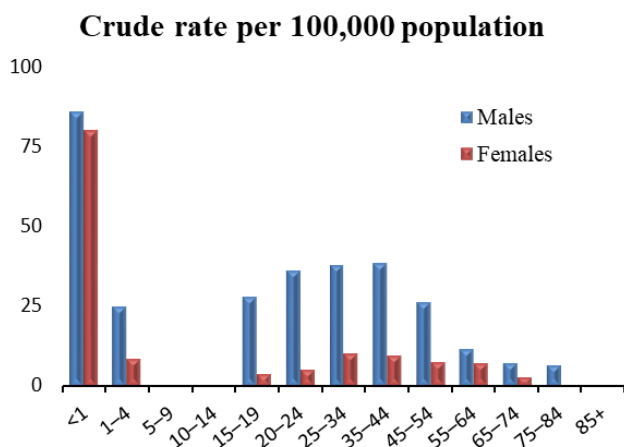
Age	Males	Females
<1	#	0
1-4	#	#
5-9	#	0
10-14	0	#
15-19	14	5
20-24	26	#
25-34	53	14
35-44	44	14
45-54	16	10
55-64	16	6
65-74	5	7
75-84	#	#
85+	#	0

## Inpatient Hospitalizations

Total: 655 (15.6\*)

Males: 501 (24.0\*)

Females: 154 (7.1\*)



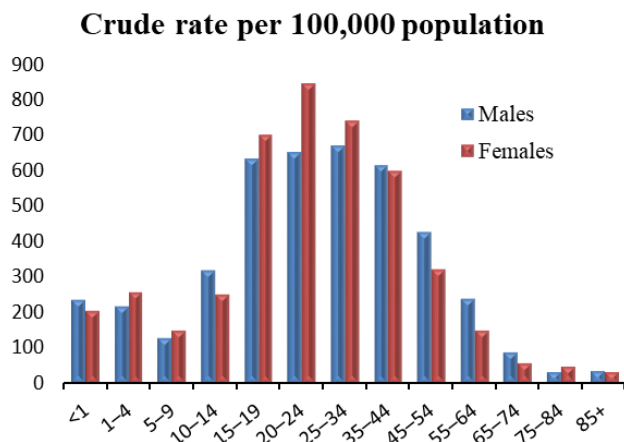
Age	Males	Females
<1	24	21
1-4	28	9
5-9	#	#
10-14	#	#
15-19	41	5
20-24	56	7
25-34	112	29
35-44	106	26
45-54	75	21
55-64	33	22
65-74	14	6
75-84	6	#
85+	#	#

## Emergency Department Visits

Total: 17,074 (410.9\*)

Males: 8,643 (411.4\*)

Females: 8,431 (411.7\*)

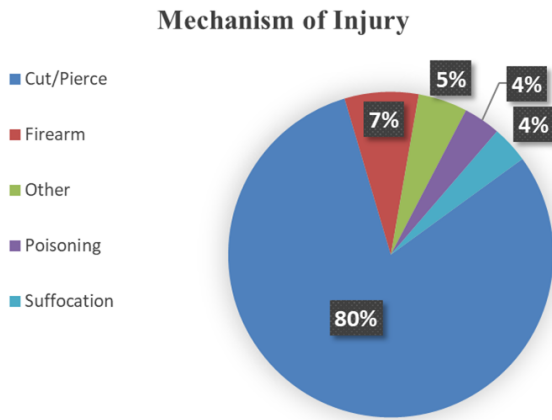


Age	Males	Females
<1	65	53
1-4	242	277
5-9	177	200
10-14	461	347
15-19	926	971
20-24	1,011	1,220
25-34	1,977	2,126
35-44	1,684	1,652
45-54	1,207	929
55-64	681	460
65-74	174	126
75-84	29	54
85+	9	16

\*Age-adjusted rate per 100,000 population  
#At least one but fewer than five

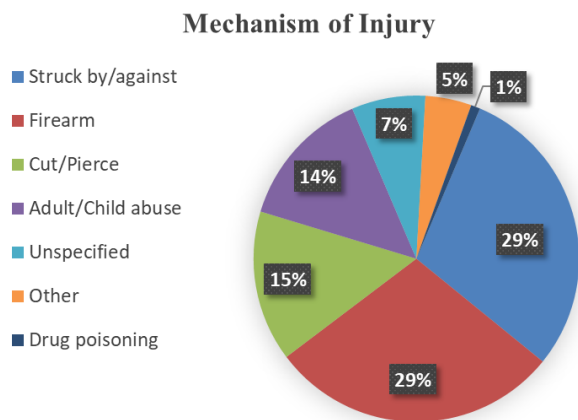
# Homicide and Assault by Mechanism of Injury

## Fatalities



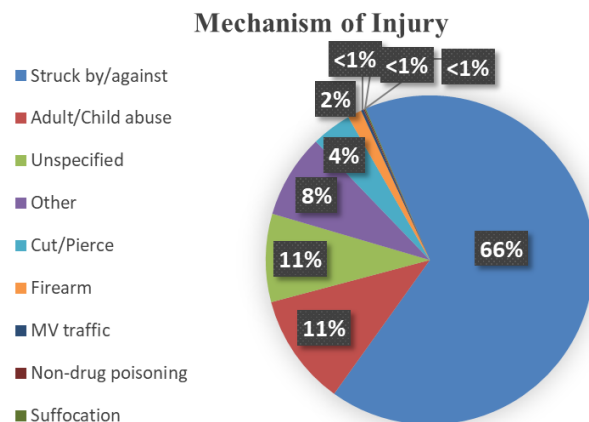
Mechanism of Injury	Count
Firearm	197
Cut/Pierce	18
Unspecified	12
Other	9
Suffocation	9

## Inpatient Hospitalizations



Mechanism of Injury	Count
Struck by/against	193
Firearm	189
Cut/Pierce	98
Adult/Child abuse	91
Unspecified	48
Other	30
Drug poisoning	6

## Emergency Department Visits



Mechanism of Injury	Count
Struck by/against	11,319
Adult/Child abuse	1,873
Unspecified	1,480
Other	1,408
Cut/Pierce	673
Firearm	237
MV traffic	44
Non-drug poisoning	21
Suffocation	19

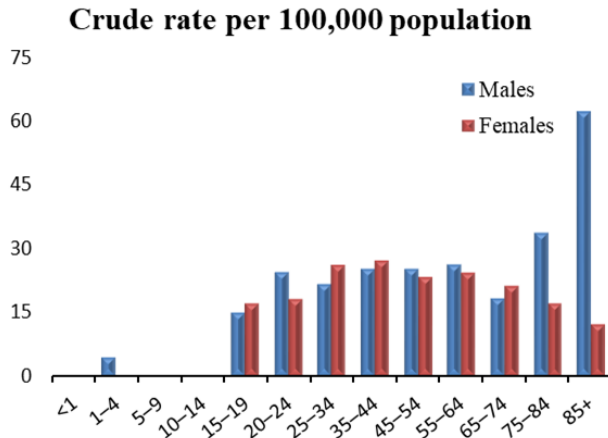
# Unintentional MV Traffic Crashes by Age and Sex

## Fatalities

Total: 626 (13.7\*)

Males: 436 (19.6\*)

Females: 190 (8.1\*)



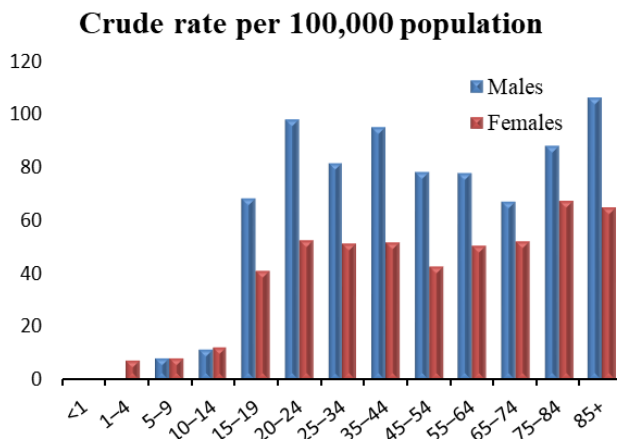
Age	Males	Females
<1	#	#
1-4	5	#
5-9	#	#
10-14	#	#
15-19	22	17
20-24	38	18
25-34	64	26
35-44	69	27
45-54	72	23
55-64	75	24
65-74	37	21
75-84	31	17
85+	17	12

## Inpatient Hospitalizations

Total: 2,468 (54.2\*)

Males: 1,488 (67.3\*)

Females: 980 (41.4\*)



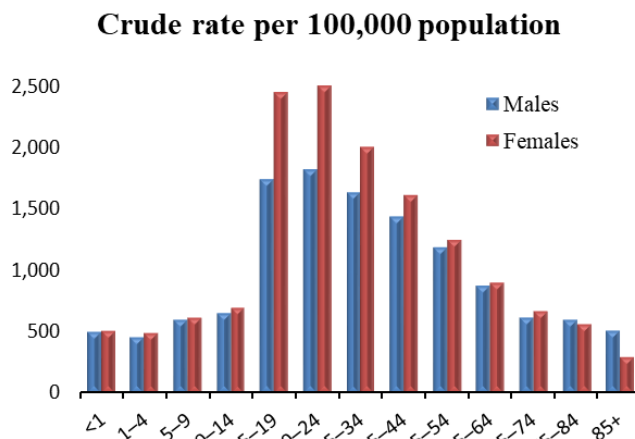
Age	Males	Females
<1	#	0
1-4	##	8
5-9	12	11
10-14	17	17
15-19	100	57
20-24	152	76
25-34	241	148
35-44	261	143
45-54	223	125
55-64	223	157
65-74	136	121
75-84	81	82
85+	29	35

## Emergency Department Visits

Total: 52,927 (1,228.2\*)

Males: 24,415 (1,134.2\*)

Females: 28,512 (1,326.8\*)



Age	Males	Females
<1	139	132
1-4	518	532
5-9	851	830
10-14	951	969
15-19	2,546	3,410
20-24	2,832	3,623
25-34	4,823	5,752
35-44	3,946	4,456
45-54	3,372	3,636
55-64	2,498	2,789
65-74	1,250	1,544
75-84	551	681
85+	138	158

\*Age-adjusted rate per 100,000 population

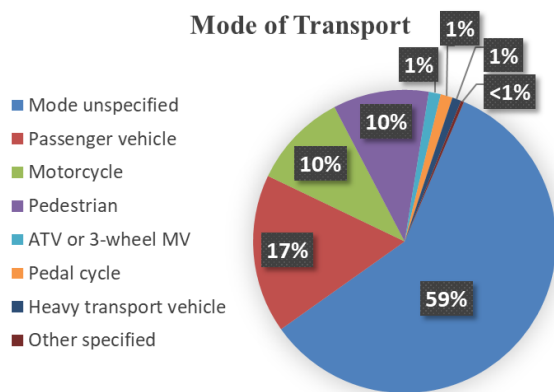
#At least one but fewer than five

##Suppressed to prevent indirect disclosure



# Unintentional MV Traffic Crashes by Mode of Transport

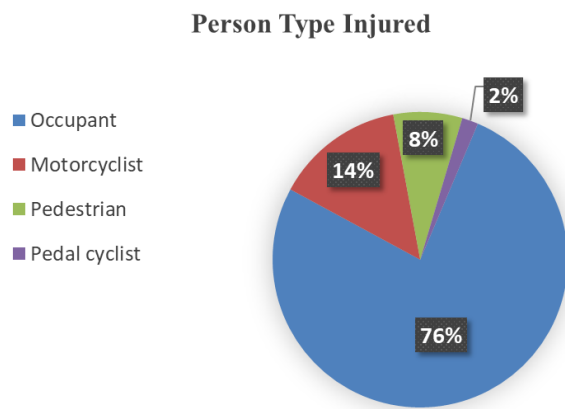
## Fatalities



Mode of Transport	Count
Mode unspecified	368
Passenger vehicle	106
Motorcycle	64
Pedestrian	64
ATV or 3-wheel MV	8
Pedal cycle	8
Heavy transport vehicle	##
Other specified	#

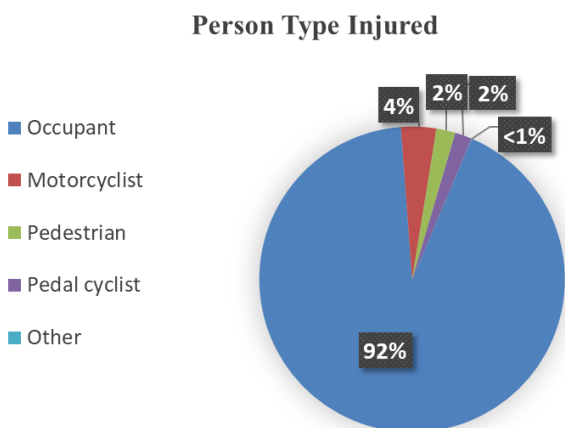
Note: "Other specified" includes persons whose mode of transport was an animal, animal-drawn vehicle, railway train, railway vehicle, streetcar, special vehicle mainly used on industrial premises, or special construction vehicle.

## Inpatient Hospitalizations



Person Type Injured	Count
Occupant	1,888
Motorcyclist	350
Pedestrian	186
Pedal cyclist	44

## Emergency Department Visits



Person Type Injured	Count
Occupant	48,926
Motorcyclist	1,971
Pedestrian	1,067
Pedal cyclist	956
Other	7

Note: "Other" includes ED visits due to injuries related to persons boarding and alighting and unspecified occupants of a motor vehicle.

#At least one but fewer than five

##Suppressed to prevent indirect disclosure

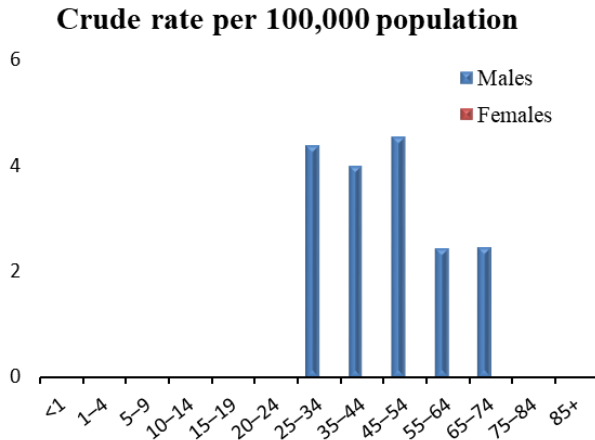
# Non-Drug Poisoning by Age and Sex

## Fatalities

Total: 69 (1.6\*)

Males: 53 (2.4\*)

Females: 16 (0.7\*)



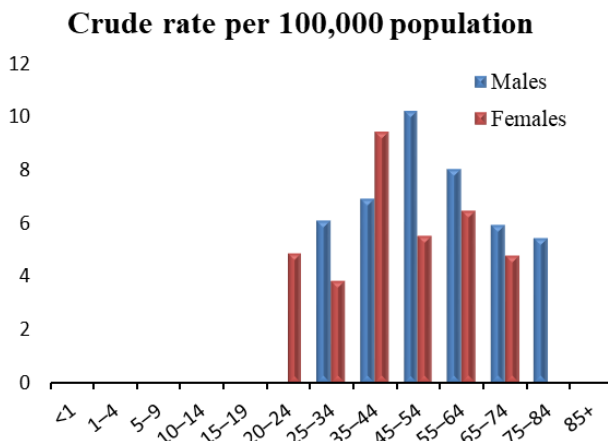
Age	Males	Females
<1	0	0
1-4	#	0
5-9	0	#
10-14	0	0
15-19	0	0
20-24	#	0
25-34	13	#
35-44	11	#
45-54	13	#
55-64	7	#
65-74	5	#
75-84	#	#
85+	0	0

## Inpatient Hospitalizations

Total: 216 (4.7\*)

Males: 116 (5.1\*)

Females: 100 (4.4\*)



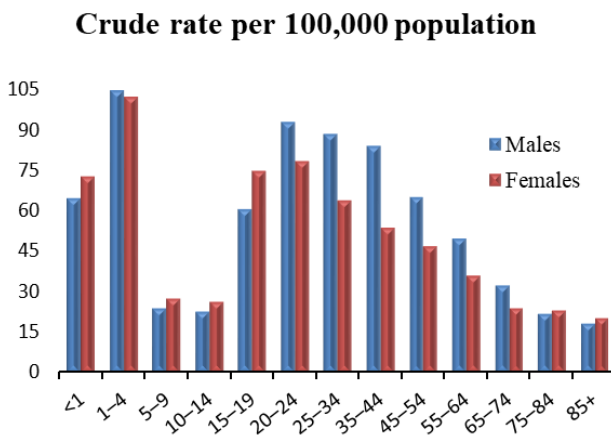
Age	Males	Females
<1	0	0
1-4	#	0
5-9	#	0
10-14	0	#
15-19	#	#
20-24	#	7
25-34	18	11
35-44	19	26
45-54	29	16
55-64	23	20
65-74	12	11
75-84	5	#
85+	0	#

## Emergency Department Visits

Total: 2,441 (56.8\*)

Males: 1,347 (62.7\*)

Females: 1,094 (50.9\*)

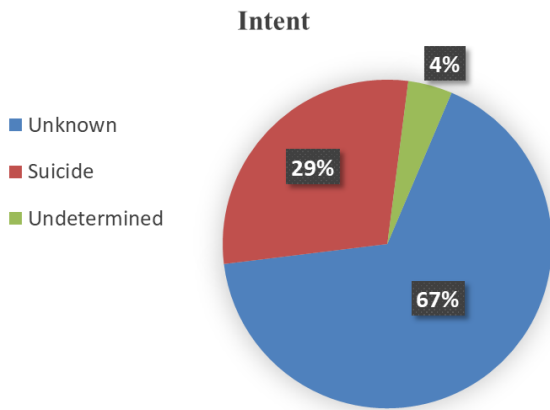


Age	Males	Females
<1	18	19
1-4	118	110
5-9	34	37
10-14	33	37
15-19	89	104
20-24	144	113
25-34	262	183
35-44	230	148
45-54	185	137
55-64	143	112
65-74	66	55
75-84	20	28
85+	5	11

\*Age-adjusted rate per 100,000 population  
#At least one but fewer than five

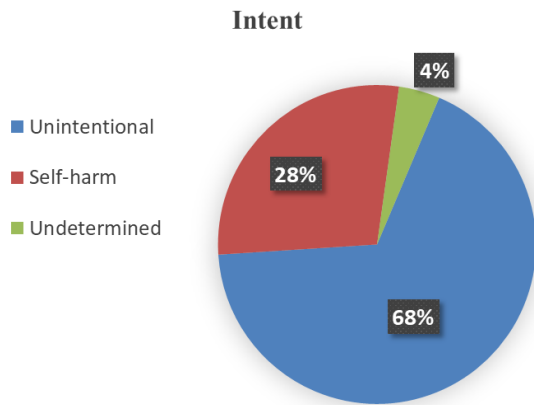
# Non-Drug Poisoning by Intent

## Fatalities



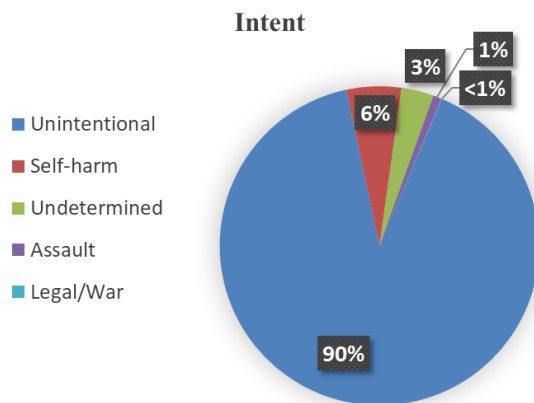
Intent	Count
Unknown	46
Suicide	##
Undetermined	#

## Inpatient Hospitalizations



Intent	Count
Unintentional	146
Self-harm	61
Undetermined	9

## Emergency Department Visits



Intent	Count
Unintentional	2,204
Self-harm	135
Undetermined	80
Assault	##
Legal/War	#

#At least one but fewer than five

##Suppressed to prevent indirect disclosure

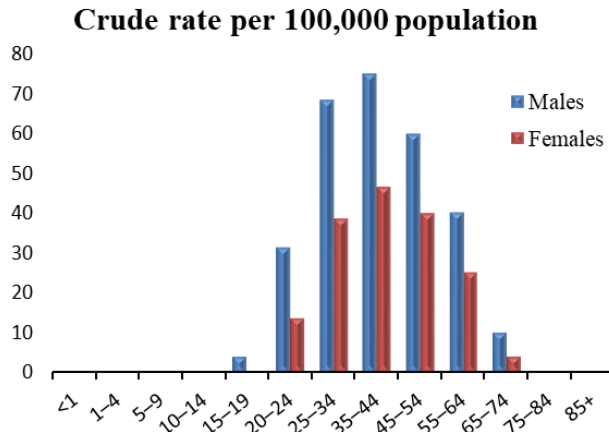
# Drug Poisoning by Age and Sex

## Fatalities

Total: 1,250 (29.2\*)

Males: 779 (36.5\*)

Females: 471 (21.9\*)



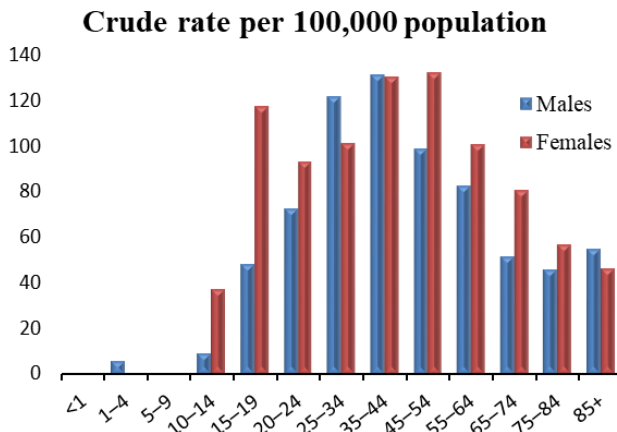
Age	Males	Females
<1	0	0
1-4	0	0
5-9	0	0
10-14	0	0
15-19	6	#
20-24	49	20
25-34	203	111
35-44	206	129
45-54	171	117
55-64	116	78
65-74	21	10
75-84	##	#
85+	#	#

## Inpatient Hospitalizations

Total: 3,609 (81.4\*)

Males: 1,613 (74.3\*)

Females: 1,996 (88.4\*)



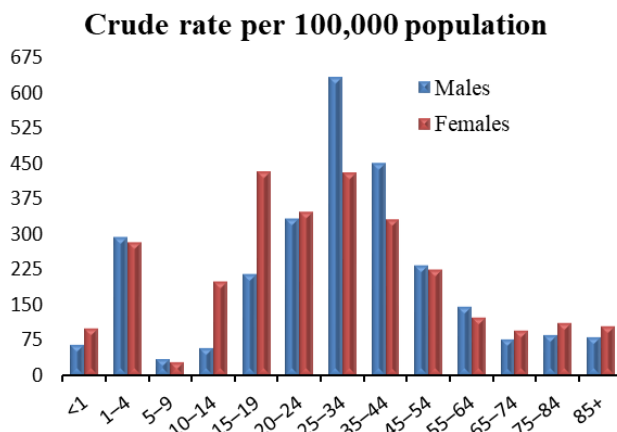
Age	Males	Females
<1	#	#
1-4	6	##
5-9	#	0
10-14	13	52
15-19	71	164
20-24	113	135
25-34	362	292
35-44	361	361
45-54	282	386
55-64	238	312
65-74	105	187
75-84	42	69
85+	15	25

## Emergency Department Visits

Total: 11,076 (263.3\*)

Males: 5,755 (274.1\*)

Females: 5,321 (252.6\*)



Age	Males	Females
<1	18	26
1-4	332	304
5-9	47	35
10-14	83	278
15-19	314	600
20-24	518	499
25-34	1,872	1,231
35-44	1,236	911
45-54	664	652
55-64	419	377
65-74	152	220
75-84	78	133
85+	22	55

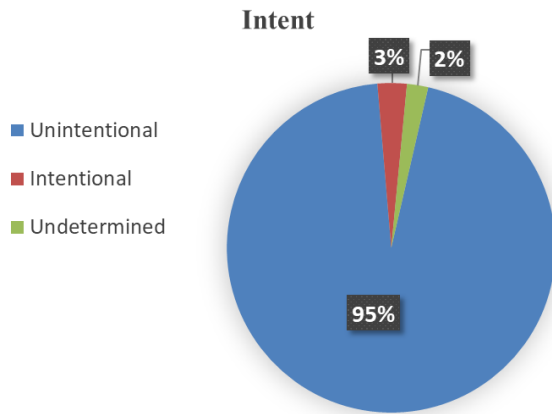
\*Age-adjusted rate per 100,000 population

#At least one but fewer than five

##Suppressed to prevent indirect disclosure

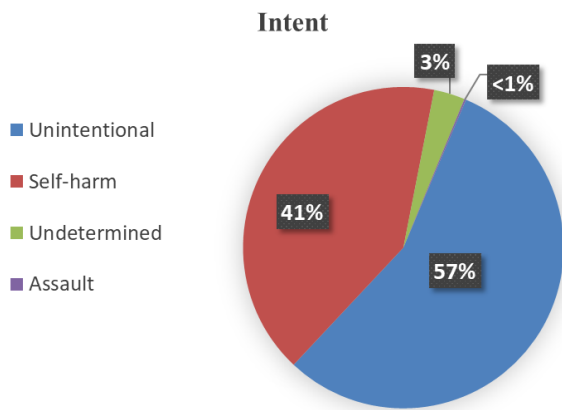
# Drug Poisoning by Intent

## Fatalities



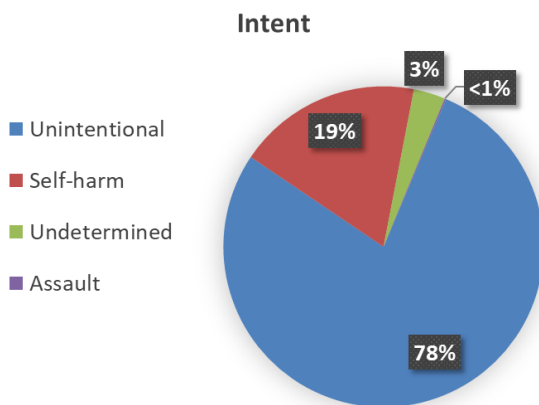
Intent	Count
Unintentional	1,188
Intentional	36
Undetermined	26

## Inpatient Hospitalizations



Intent	Count
Unintentional	2,007
Self-harm	1,483
Undetermined	113
Assault	6

## Emergency Department Visits



Intent	Count
Unintentional	8,645
Self-harm	2,061
Undetermined	354
Assault	16

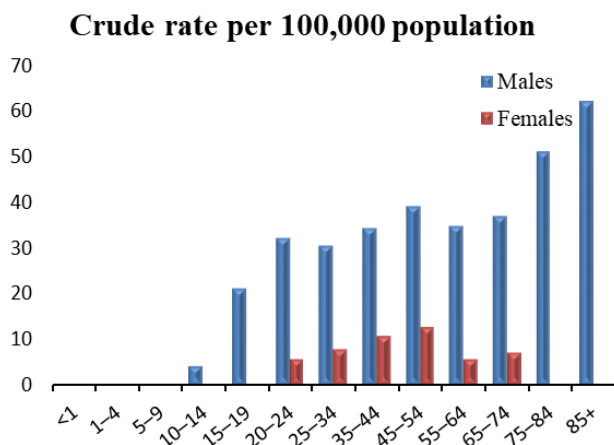
## Suicide and Self-Injury by Age and Sex

### Fatalities

Total: 757 (16.5\*)

Males: 621 (27.6\*)

Females: 136 (6.1\*)



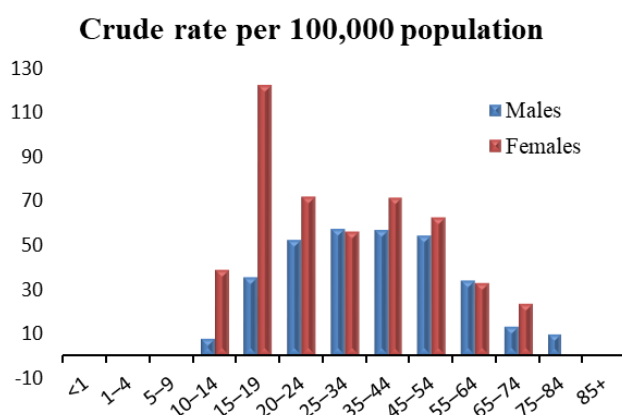
Age	Males	Females
<1	0	0
1-4	0	0
5-9	0	0
10-14	6	#
15-19	31	#
20-24	50	8
25-34	90	22
35-44	94	29
45-54	111	36
55-64	100	17
65-74	75	16
75-84	47	#
85+	17	#

### Inpatient Hospitalizations

Total: 1,798 (42.0\*)

Males: 761 (35.3\*)

Females: 1,037 (48.9\*)



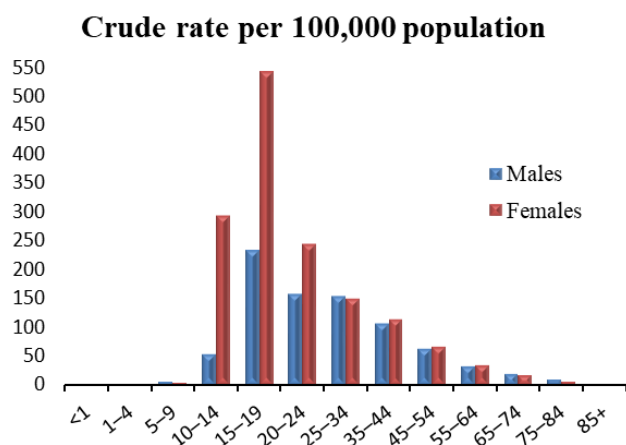
Age	Males	Females
<1	0	0
1-4	0	0
5-9	#	0
10-14	11	54
15-19	52	170
20-24	81	104
25-34	169	161
35-44	155	197
45-54	154	181
55-64	97	102
65-74	27	54
75-84	9	##
85+	#	#

### Emergency Department Visits

Total: 4,318 (104.5\*)

Males: 1,721 (81.9\*)

Females: 2,597 (128.4\*)



Age	Males	Females
<1	0	0
1-4	#	#
5-9	6	5
10-14	76	408
15-19	340	754
20-24	242	353
25-34	453	425
35-44	287	310
45-54	178	192
55-64	91	103
65-74	35	36
75-84	8	7
85+	#	#

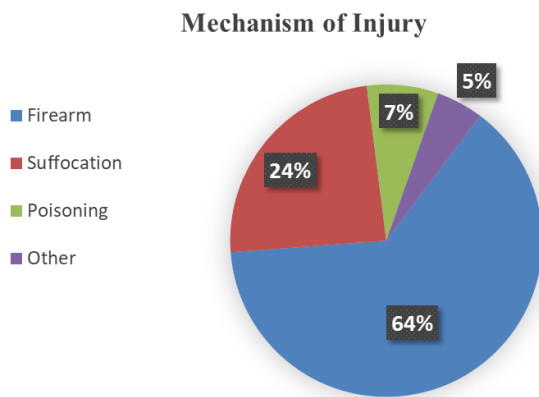
\*Age-adjusted rate per 100,000 population

#At least one but fewer than five

##Suppressed to prevent indirect disclosure

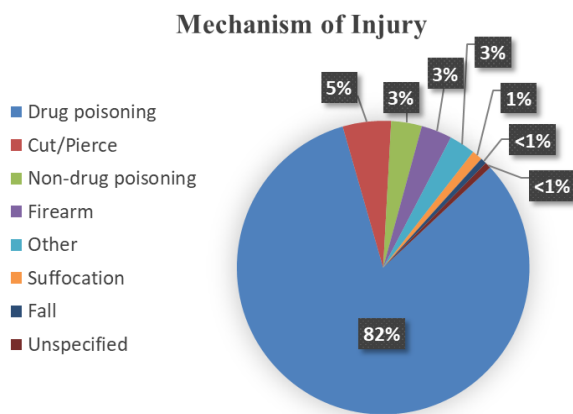
# Suicide and Self-Injury by Mechanism of Injury

## Fatalities



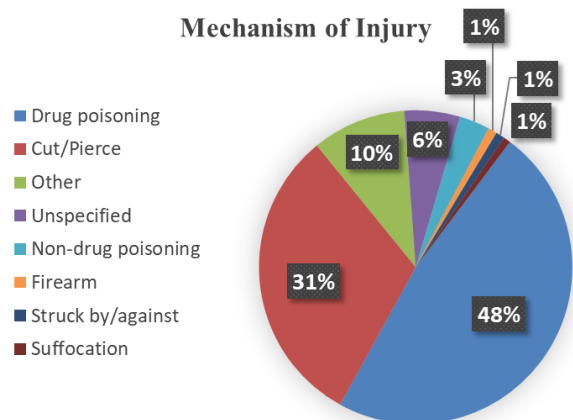
Mechanism of Injury	Count
Firearm	481
Suffocation	183
Poisoning	56
Other	37

## Inpatient Hospitalizations



Mechanism of Injury	Count
Drug poisoning	1,483
Cut/Pierce	96
Non-drug poisoning	61
Firearm	61
Other	52
Suffocation	21
Fall	12
Unspecified	12

## Emergency Department Visits



Mechanism of Injury	Count
Drug poisoning	2,061
Cut/Pierce	1,344
Other	419
Unspecified	248
Non-drug poisoning	135
Firearm	40
Struck by/against	39
Suffocation	32

# Traumatic Brain Injury by Age and Sex

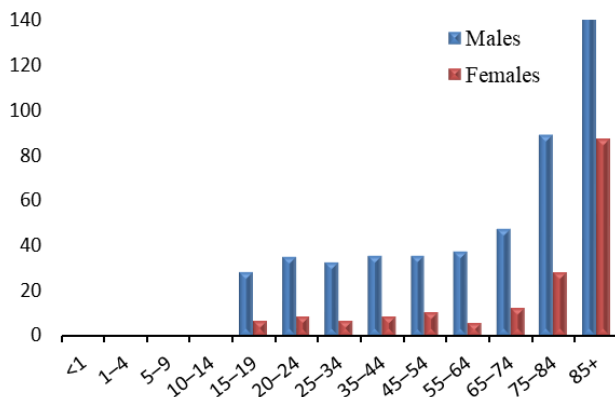
## Fatalities

Total: 962 (20.5\*)

Males: 739 (33.2\*)

Females: 223 (8.8\*)

Crude rate per 100,000 population



Age	Males	Females
<1	#	0
1-4	#	#
5-9	#	#
10-14	#	#
15-19	41	9
20-24	54	12
25-34	96	19
35-44	97	23
45-54	101	30
55-64	107	17
65-74	96	28
75-84	82	34
85+	52	47

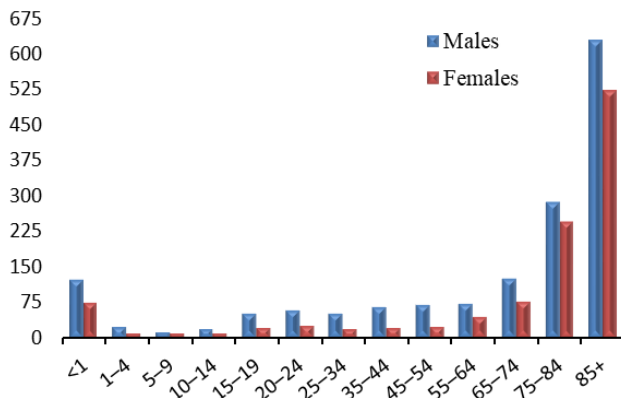
## Inpatient Hospitalizations

Total: 2,854 (58.8\*)

Males: 1,681 (76.2\*)

Females: 1,173 (42.3\*)

Crude rate per 100,000 population



Age	Males	Females
<1	34	19
1-4	25	10
5-9	17	11
10-14	28	12
15-19	73	28
20-24	89	35
25-34	152	50
35-44	177	56
45-54	195	64
55-64	203	132
65-74	252	177
75-84	264	298
85+	172	281

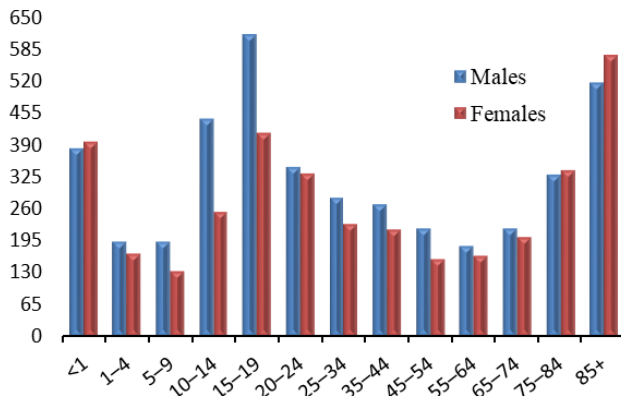
## Emergency Department Visits

Total: 11,608 (265.3\*)

Males: 6,311 (294.8\*)

Females: 5,297 (234.7\*)

Crude rate per 100,000 population



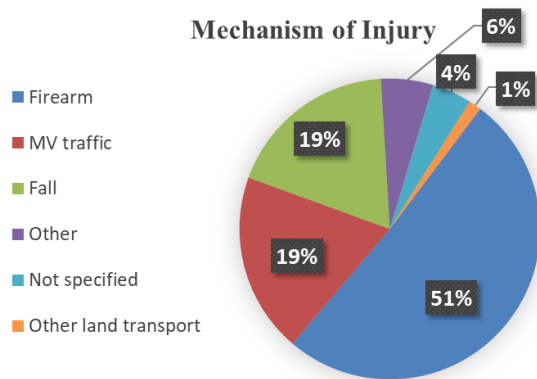
Age	Males	Females
<1	107	104
1-4	220	183
5-9	275	178
10-14	644	355
15-19	903	576
20-24	538	480
25-34	836	662
35-44	741	604
45-54	626	458
55-64	529	510
65-74	447	467
75-84	304	412
85+	141	308

\*Age-adjusted rate per 100,000 population  
#At least one but fewer than five



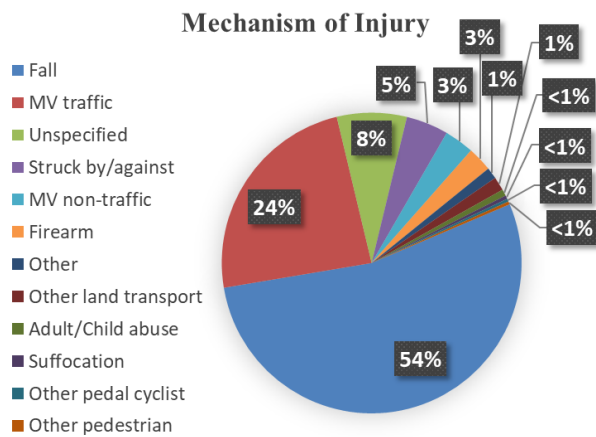
# Traumatic Brain Injury by Mechanism of Injury

## Fatalities



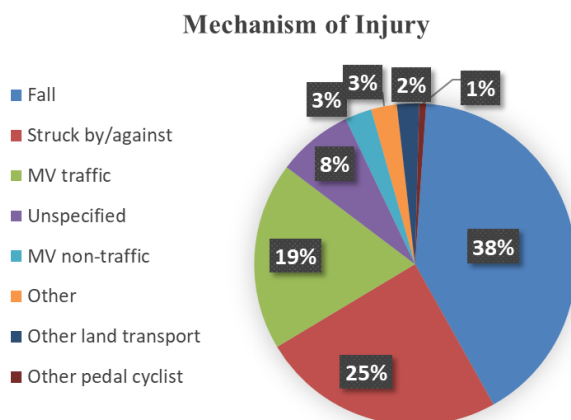
Mechanism of Injury	Count
Firearm	490
MV traffic	186
Fall	178
Other	54
Not specified	41
Other land transport	13

## Inpatient Hospitalizations



Mechanism of Injury	Count
Fall	1,534
MV traffic	682
Unspecified	215
Struck by/against	130
MV non-traffic	91
Firearm	76
Other	35
Other land transport	42
Adult/Child abuse	20
Suffocation	11
Other pedal cyclist	9
Other pedestrian	9

## Emergency Department Visits



Mechanism of Injury	Count
Fall	4,732
Struck by/against	2,847
MV traffic	2,193
Unspecified	885
MV non-traffic	312
Other	300
Other land transport	258
Other pedal cyclist	81