

KENTUCKY INJURY INDICATORS



2019

KENTUCKY VIOLENCE AND INJURY PREVENTION PROJECT (KVIPP)

COOPERATIVE AGREEMENT No. 5NU17CE924846

KENTUCKY INJURY PREVENTION AND RESEARCH CENTER

JULY 2021



This page left intentionally blank.

ACKNOWLEDGMENTS

This report is funded through the Core State Violence and Injury Prevention Program by the National Center on Injury Prevention and Control and the Centers for Disease Control and Prevention, Agreement No. 5NU17CE924846.

Prepared by

**Lara Daniels
Ashley M. Bush**

Released by

Kentucky Injury Prevention and Research Center
University of Kentucky College of Public Health
Lexington, Kentucky 40504

Suggested citation: Kentucky Injury Indicators, 2019 Report. Lexington (KY): University of Kentucky, Kentucky Injury Prevention and Research Center; 2021.

This page left intentionally blank.

TABLE OF CONTENTS

Abbreviations	1
Executive Summary	2
Data Sources and Methods.....	3
 10 Leading Causes of Injury by Age Group and Intent	
Definitions for Injury Data Matrices	5
Mortality	6
Inpatient Hospitalizations	7
Emergency Department Visits.....	8
 Injury Indicators	
All Injuries.....	9
Unintentional Falls.....	11
Unintentional Fire-Related Injuries.....	13
Firearm-Related Injuries.....	15
Homicide and Assault	17
Unintentional Motor Vehicle Traffic Crashes	19
Non-Drug Poisoning	21
Drug Poisoning	23
Suicide and Self-Injury	25
Traumatic Brain Injury	27

Abbreviations

CDC	Centers for Disease Control and Prevention
CSTE	Council of State and Territorial Epidemiologists
ED	emergency department
ICD	International Classification of Diseases
ICD-CM	International Classification of Diseases, Clinical Modifications
KIPRC	Kentucky Injury Prevention and Research Center
MV	motor vehicle
ATV	all-terrain vehicle
PCR	police collision report
TBI	traumatic brain injury

Executive Summary

Kentucky's overall age-adjusted injury mortality rate was 85.5 per 100,000 Kentucky resident population in 2019. The male and female age-adjusted rates were 119.2 and 53.5, respectively.

The age-adjusted rate for injury-related inpatient hospitalizations per 100,000 population was 466.3 per 100,000 Kentucky resident population in 2019. The male and female age-adjusted rates were 458.4 and 458.9, respectively.

The age-adjusted rate for injury-related emergency department visit discharges per 100,000 Kentucky resident population was 10,659.2 in 2019. The male and female age-adjusted rates were 10,823.9 and 10,437.5, respectively.

Mortality

There were 3,907 injury mortalities among Kentucky residents in 2019. The leading mechanisms of injury mortality for Kentucky residents in 2019 were *poisonings* (1,378), *motor vehicle traffic crashes* (657), and *firearms* (650). Ninety-six percent of the poisonings were drug poisonings. Among the drug poisonings (1,316), 96% were unintentional drug overdoses involving prescription medications and/or illicit drugs. The leading injury mechanisms among intentional deaths (suicides and homicides) were *firearms* (64%) and *suffocation/hanging* (23%).

There were 917 mortalities from traumatic brain injuries (TBI), where TBI was reported as a cause of death on the death certificate alone or in combination with other injuries or conditions. Among TBI-related mortalities, 55% were unintentional and 45% were intentional.

Inpatient Hospitalizations

There were 23,210 injury-related inpatient hospitalization encounters among Kentucky residents in 2019. The leading mechanisms of injury-related inpatient hospitalizations were *falls* (12,055), *drug poisonings* (3,292), *unspecified* (2,354), and *motor vehicle traffic crashes* (2,333). The majority of unintentional fall-related hospitalizations occurred among Kentucky residents age 55 years and older (89%). Of the 3,292 drug poisonings, 1,774 (54%) were unintentional and 1,397 (42%) were self-directed/inflicted. The leading mechanism of intentional injury-related inpatient hospitalizations was *drug poisoning* (60%).

TBI (either TBI alone or in combination with other injuries) accounted for 2,901 hospitalizations. The majority of the TBI-related inpatient hospitalizations were unintentional (87%). *Falls* (55%) and *motor vehicle traffic crashes* (22%) were the leading mechanisms of TBI-related hospitalizations.

Emergency Department Visits

There were 465,997 injury-related emergency department (ED) visits among Kentucky residents in 2019. The leading mechanisms of injury-related ED visits were *falls* (142,922), *being struck by or against an object or person* (60,456), *unspecified* (75,844), and *motor vehicle traffic crashes* (51,481). The leading mechanism of intentional injury-related ED visits was *struck by/against* (56%).

TBI (either TBI alone or in combination with other injuries) accounted for 12,071 ED visits. The majority of the TBI-related ED visits were unintentional (85%). *Falls* (41%) and *struck by/against* (25%) were the leading mechanisms of TBI-related ED visits.

Data Sources and Methods

Data Sources

All data are provisional and subject to change.

Population Data

U.S. Census, Population Division. "Annual Estimates of the Resident Population by Single Year of Age and Sex for the U.S., States, and Puerto Rico Commonwealth: 2019 Population Estimates". Population is limited to Kentucky residents.

Mortality Data

Kentucky Death Certificate Database, Kentucky Office of Vital Statistics, Cabinet for Health and Family Services, Frankfort, KY.

Inpatient Hospitalization Discharge Data

Kentucky Inpatient Hospitalization Claims Files, Office of Health Data and Analytics, Cabinet for Health and Family Services, Frankfort, KY. Note: Counts represent encounters of care and could be greater than the number of individual patients treated at an acute care facility.

Emergency Department Visit Discharge Data

Kentucky Outpatient Services Database, Office of Health Data and Analytics, Cabinet for Health and Family Services, Frankfort, KY. Note: Counts represent encounters of care and could be greater than the number of individual patients treated.

Methods

All data were limited to Kentucky residents.

Injury-Related Mortality

The definitions for fatal injuries (deaths) used in this report correspond to the Centers for Disease Control and Prevention (CDC)'s "State Injury Indicators Report: Instructions for Preparing 2019 Data." The underlying cause of death field was used to identify the mechanism and manner of fatal injuries.

PLEASE NOTE: *Death counts in this report are based on state death certificate files and thus cannot be expected to match counts based on other sources. In particular, numbers of motor vehicle traffic deaths will not match those based on police collision reports (PCRs) because the two systems do not report on identical underlying populations. Death certificates capture deaths of Kentucky residents regardless of where they occur; PCRs capture deaths that occur on Kentucky roads only, regardless of state of residence. Similarly, counts of homicides and assaults in this report will not match counts based on police crime reports. These data sources should be viewed as complementary. There also exist specialized, death certificate-based surveillance systems for injury mortalities at both the state (e.g., the Kentucky Violent Death Reporting System and Child Fatality Reviews) and national levels (e.g., CDC's Web-Based Injury Statistics Query and Reporting System/WISQARS™ and Wide-ranging Online Data for Epidemiologic Research/WONDER). Counts from those systems may not exactly match counts in this report due to differences in inclusion criteria, case definitions, the use of ancillary data sources for case identification, or other factors.*

Injury-Related Inpatient Hospitalizations

Hospitalizations were limited to discharges from nonfederal, acute care, or inpatient facilities. The CDC's surveillance definition for injury hospitalizations was used; only initial encounters were included (indicated by a seventh character of "A" or missing in the International Classification of Diseases, Tenth Revision, Clinical Modification [ICD-10-CM] code). The injury subset for hospitalizations was created by selecting discharges having a principal diagnosis code.

The CDC external causes-of-injury matrix (updated October 2020) was used to categorize the injury visit by mechanism of injury and intent. Injury details were provided using external cause of morbidity codes, which are not required for discharge billing purposes; therefore, every injury hospitalization may not have this level of detail. Traumatic brain injury hospitalizations were defined using the Council for State and Territorial Epidemiologists (CSTE) Injury Surveillance Toolkit, last updated July 7, 2021. Note that inpatient hospitalizations resulting in death are included in the total inpatient injury hospitalization count.

PLEASE NOTE: *In October 2015, healthcare discharge data (injury hospitalization encounters) coding systems transitioned from ICD-9-CM to ICD-10-CM. The coding system transition should be considered when interpreting the data, and trend analysis using ICD-9-CM coded data for some years and ICD-10-CM coded data for other years is not recommended due to substantial differences and a lack of one-to-one correspondence between ICD-9-CM and ICD-10-CM.*

Injury-Related Emergency Department Visits

The CDC's surveillance definition for injury emergency department (ED) visits was used; only initial encounters were included (seventh character of "A" or missing) in the ED dataset using ICD-10-CM diagnosis codes or external cause codes. The injury subset for ED visits was used applying an any mention approach.

The CDC's external cause-of-injury matrix (updated October 2020) was used to categorize the injury visit by mechanism of injury and intent. The external causes of morbidity, which were used to provide injury details, are not required for discharge billing purposes; therefore, every injury ED visit may not have this level of detail. Traumatic brain injuries were defined using the CSTE Injury Surveillance Toolkit, updated July 7, 2021. Note that ED visits include those resulting in inpatient hospitalization or death are included in the total injury ED visit count.

PLEASE NOTE: *In October 2015, healthcare discharge data (emergency department visit encounters) coding systems transitioned from ICD-9-CM to ICD-10-CM. The coding system transition should be considered when interpreting the data, and trend analysis using ICD-9-CM coded data for some years and ICD-10-CM coded data for other years is not recommended due to substantial differences and a lack of one-to-one correspondence between ICD-9-CM and ICD-10-CM.*

Calculation of Rates and Data Presentation

Two types of rates are reported. Age-specific ("crude") rates were calculated by dividing the number of injury events occurring in a particular age group by the estimated number of Kentucky residents in that age group in 2019 and multiplying by 100,000. Age-adjusted rates were adjusted to the year 2000 standard population. Rates based on counts of 20 or fewer may be unstable.

Data are presented as aggregated counts. Certain counts have been suppressed because either the observed number of injury events is very small (a count of at least one but fewer than five) and not appropriate for publication or the count can be used to calculate the number in a

***Definitions for “Leading Cause” by Age Group and Intent
Injury-Related Mortality and Discharge Data Matrices***

Motor vehicle non-traffic (MV non-traffic)—Includes motor vehicle crashes that occurred somewhere other than on a public roadway.

Motor vehicle traffic (MV traffic)—Includes crashes that occurred on a public roadway and involved at least one motor vehicle. All persons injured in MV traffic incidents are counted here. Pedal cyclists and pedestrians who were struck by a motor vehicle would be counted here, but those who crashed on a public roadway without involvement of a motor vehicle would be counted elsewhere (see “Pedal Cyclist, Other” definition).

Natural/Environmental—Natural or environmental causes (insect bites and stings, animal bites, extreme weather, excessive heat or cold, etc.).

Other Land Transport—Includes motor vehicle crashes that occurred somewhere other than on a public roadway, rail injuries, etc. Does not include air or water injuries.

Other Specified—Includes a variety of relatively low-incidence causes of injury grouped together. Includes causes not elsewhere classified; an external cause of injury code that is intended for use when no other code exists to adequately describe the mechanism and manner of injury.

Pedal Cyclist, Other—Includes pedal cyclists who crashed on a public roadway without involvement of a motor vehicle.

Poisoning—Includes drug and non-drug poisonings, unless otherwise noted.

Tie—Indicates a tied count for a leading cause of injury-related mortality or morbidity.

Unspecified—Injuries for which an external code of injury either (a) was not specified or (b) was specified but did not indicate the mechanism or manner of injury.

10 Leading Causes of Injury-Related Mortality by Age Group and Intent, 2019

Kentucky Residents

Rank	Under 12 years old	12–17 years old	18–24 years old	25–34 years old	35–44 years old	45–54 years old	55–64 years old	65 years and older
1	Suffocation 15	Firearm 17	Motor Vehicle Traffic 74	Poisoning 288	Poisoning 358	Poisoning 317	Poisoning 190	Fall 306
2	Motor Vehicle Traffic 14	Tie* 12	Poisoning 62	Motor Vehicle Traffic 91	Motor Vehicle Traffic 108	Motor Vehicle Traffic 102	Motor Vehicle Traffic 95	Unspecified 186
3	Drowning 9	Firearm 7	Firearm 44	Firearm 62	Firearm 64	Firearm 60	Firearm 93	Motor Vehicle Traffic 161
4	Fire/Flame 6		Firearm 37	Firearm 50	Suffocation 59	Suffocation 30	Fall 32	Firearm 103
5			Suffocation 23	Suffocation 44	Firearm 38	Tie* 19	Suffocation 20	Poisoning 59
6			Poisoning 5	Poisoning 11	Poisoning 11	Fall 14	Poisoning 19	Suffocation 52
7				Firearm 5	Tie* 7	Other Specified 9	Suffocation 18	Fire/Flame 29
8					Unspecified 6	Tie* 7	Unspecified 15	Tie* 12
9					Tie* 5	Tie* 6	Firearm 14	Other Land Transport 11
10						Tie* 5	Fire/Flame 12	Suffocation 10

Injury Intent		
Unintentional	Suicide	Homicide
		Undetermined

Counts less than five are not included in this matrix. Produced by the Kentucky Injury Prevention and Research Center, as bona fide agent for the Kentucky Department for Public Health. July 2021. This product was supported by grants numbers 5NU17CE924846 (Centers for Disease Control and Prevention) and 3048114413. Data source: Kentucky Death Certificate Database, Kentucky Office of Vital Statistics, Cabinet for Health and Family Services. Data are provisional and subject to change.

10 Leading Causes of Injury-Related Inpatient Hospitalizations by Age Group and Intent, 2019

Kentucky Residents

Rank	Under 12 years old	12-17 years old	18-24 years old	25-34 years old	35-44 years old	45-54 years old	55-64 years old	65 years and older
1	Fall 165	Drug Poisoning 127	Motor Vehicle Traffic 245	Motor Vehicle Traffic 355	Motor Vehicle Traffic 360	Fall 603	Fall 1,536	Fall 9,167
2	Child/ Adult Abuse 81	Motor Vehicle Traffic 93	Drug Poisoning 236	Drug Poisoning 320	Drug Poisoning 331	Motor Vehicle Traffic 344	Motor Vehicle Traffic 336	Motor Vehicle Traffic 518
3	Motor Vehicle Traffic 72	Fall 68	Drug Poisoning 120	Drug Poisoning 254	Fall 274	Drug Poisoning 306	Drug Poisoning 310	Drug Poisoning 332
4	Drug Poisoning 35	Motor Vehicle Non-Traffic 39	Fall 63	Fall 171	Drug Poisoning 264	Drug Poisoning 276	Drug Poisoning 147	Unspecified 183
5	Motor Vehicle Non-Traffic 32	Struck By/Against 28	Firearm 57	Firearm 49	Motor Vehicle Non-Traffic 50	Unspecified 58	Unspecified 64	Struck By/Against 180
6	Tie* 28	Drug Poisoning 20	Motor Vehicle Non-Traffic 41	Tie* 45	Unspecified 43	Struck By/Against 50	Struck By/Against 59	Drug Poisoning 87
7	Struck By/Against 27	Tie* 15	Firearm 33	Cut/Pierce 35	Struck By/Against 40	Motor Vehicle Non-Traffic 39	Motor Vehicle Non-Traffic 39	Foreign Body 47
8	Bite/Sting 22	Firearm 14	Unspecified 17	Motor Vehicle Non-Traffic 32	Firearm 32	Non-Drug Poisoning 36	Other Land Transport 33	Motor Vehicle Non-Traffic 46
9	Other Land Transport 11	Unspecified 12	Cut/Pierce 13	Struck By/Against 28	Cut/Pierce 28	Struck By/Against 29	Struck By/Against 27	Natural/ Environmental 45
10	Tie* 10	Tie* 8	Tie* 11	Cut/Pierce 23	Tie* 25	Other Land Transport 27	Non-Drug Poisoning 26	Overexertion 37

Injury Intent			
Unintentional	Self-Harm	Assault	Undetermined

Counts represent encounters of care and could be greater than the number of individual patients treated at an acute care facility. Counts less than five are not included in this matrix. Produced by the Kentucky Injury Prevention and Research Center, as bona fide agent for the Kentucky Department for Public Health. July 2021. This product was supported by grants numbers 5NU17CE924846 (Centers for Disease Control and Prevention) and 3048114413. Data source: Kentucky Inpatient Hospitalization Claims Files, Office of Health Data and Analytics. Data are provisional and subject to change.

10 Leading Causes of Injury-Related Emergency Department Visits by Age Group and Intent, 2019

Kentucky Residents

Rank	Under 12 years old	12-17 years old	18-24 years old	25-34 years old	35-44 years old	45-54 years old	55-64 years old	65 years and older
1	Fall 26,345	Fall 8,860	Motor Vehicle Traffic 9,218	Fall 10,712	Fall 12,039	Fall 14,613	Fall 17,753	Fall 45,154
2	Struck By/Against 10,426	Struck By/Against 7,975	Fall 7,402	Motor Vehicle Traffic 9,946	Motor Vehicle Traffic 7,954	Motor Vehicle Traffic 6,598	Motor Vehicle Traffic 5,191	Struck By/Against 4,589
3	Unspecified 5,189	Overexertion 4,393	Struck By/Against 5,774	Struck By/Against 6,360	Unspecified 5,573	Unspecified 4,593	Unspecified 3,652	Motor Vehicle Traffic 4,404
4	Bite/Sting 4,729	Motor Vehicle Traffic 4,144	Overexertion 3,891	Unspecified 5,619	Struck By/Against 5,510	Overexertion 4,513	Struck By/Against 3,583	Unspecified 4,389
5	Motor Vehicle Traffic 3,963	Unspecified 3,216	Cut/Pierce 3,877	Overexertion 5,578	Overexertion 5,401	Struck By/Against 4,465	Overexertion 2,958	Cut/Pierce 2,537
6	Cut/Pierce 3,621	Cut/Pierce 2,219	Unspecified 3,511	Cut/Pierce 5,347	Cut/Pierce 4,468	Cut/Pierce 3,499	Cut/Pierce 2,834	Overexertion 2,377
7	Overexertion 2,589	Struck By/Against 1,272	Struck By/Against 2,161	Struck By/Against 2,984	Bite/Sting 2,252	Bite/Sting 2,109	Bite/Sting 1,754	Bite/Sting 1,617
8	Foreign Body 2,155	Bite/Sting 1,253	Bite/Sting 1,808	Drug Poisoning 2,495	Struck By/Against 2,241	Struck By/Against 1,456	Struck By/Against 864	Foreign Body 908
9	Other Specified 2,133	Other Specified 926	Other Specified 1,195	Bite/Sting 2,308	Drug Poisoning 1,830	Drug Poisoning 991	Other Specified 729	Drug Poisoning 568
10	Hot Object/Substance 929	Motor Vehicle Non-Traffic 828	Motor Vehicle Non-Traffic 1,015	Other Specified 1,450	Other Specified 1,170	Other Specified 932	Drug Poisoning 674	Other Specified 547

Unintentional			Injury Intent			Undetermined		
			Self-Harm			Assault		

Counts represent encounters of care and could be greater than the number of individual patients treated. Counts less than five are not included in this matrix. Produced by the Kentucky Injury Prevention and Research Center, as bona fide agent for the Kentucky Department for Public Health. July 2021. This product was supported by grants numbers 5NU17CE924846 (Centers for Disease Control and Prevention) and 3048114413. Data source: Kentucky Outpatient Services Database, Office of Health Data and Analytics. Data are provisional and subject to change.



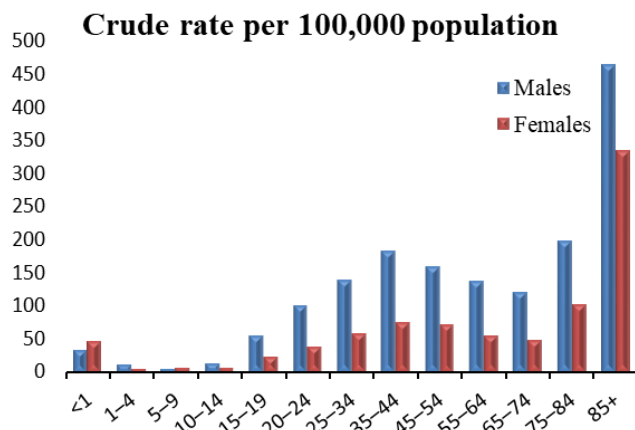
All Injuries by Age and Sex

Mortality

Total: 3,907 (85.5*)

Males: 2,614 (119.2*)

Females: 1,293 (53.5*)



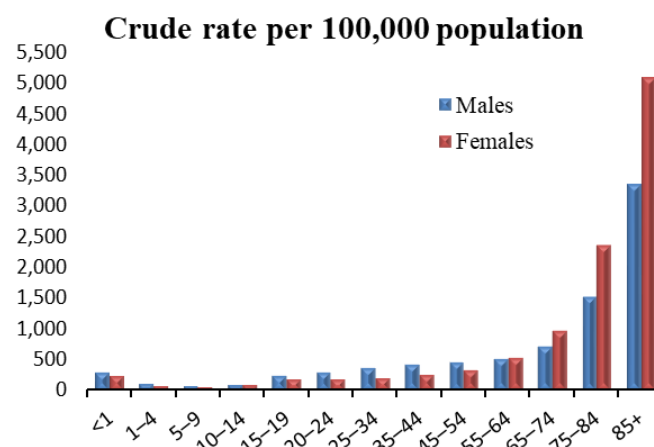
Age	Males	Females
<1	9	12
1-4	12	5
5-9	6	8
10-14	18	9
15-19	81	32
20-24	154	55
25-34	415	170
35-44	503	207
45-54	443	203
55-64	398	169
65-74	255	115
75-84	190	127
85+	130	181

Inpatient Hospitalizations

Total: 23,210 (466.3*)

Males: 10,307 (458.4*)

Females: 12,903 (458.9*)



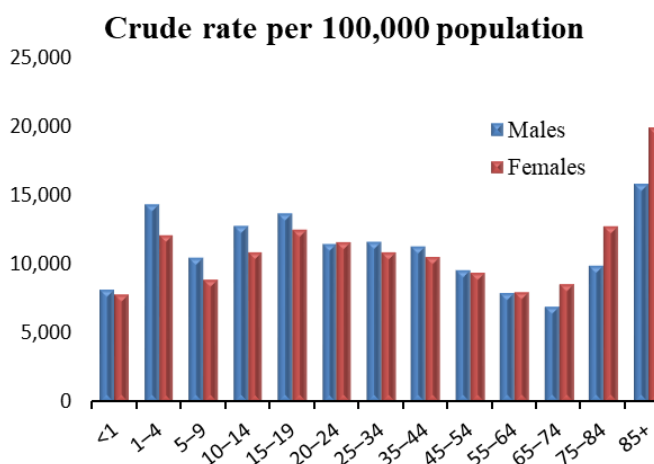
Age	Males	Females
<1	82	63
1-4	129	91
5-9	116	79
10-14	143	138
15-19	351	278
20-24	469	269
25-34	1,118	595
35-44	1,186	712
45-54	1,277	978
55-64	1,523	1,667
65-74	1,506	2,318
75-84	1,469	2,966
85+	938	2,749

Emergency Department Visits

Total: 465,997 (10,659.2*)

Males: 231,816 (10,823.9*)

Females: 234,181 (10,437.5*)

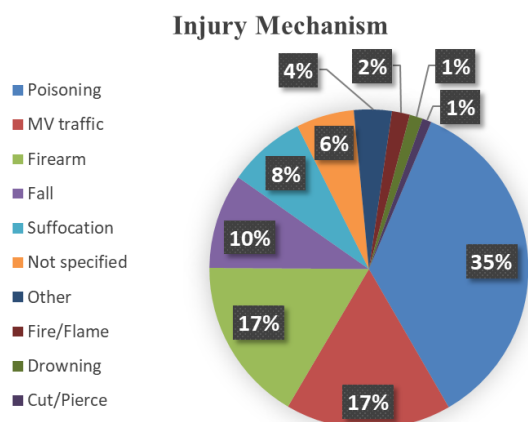


Age	Males	Females
<1	2,222	2,030
1-4	16,094	12,863
5-9	14,802	11,844
10-14	18,371	15,084
15-19	19,962	17,400
20-24	17,586	16,608
25-34	34,472	31,075
35-44	30,800	28,946
45-54	26,469	26,689
55-64	22,761	24,759
65-74	14,502	20,266
75-84	9,380	15,909
85+	4,395	10,708

*Age-adjusted rate per 100,000 population

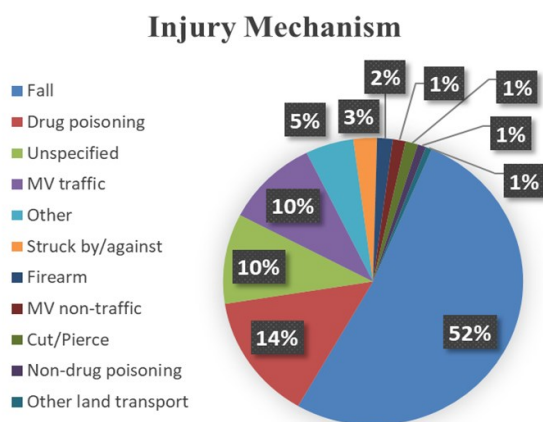
All Injuries by Injury Mechanism

Mortality



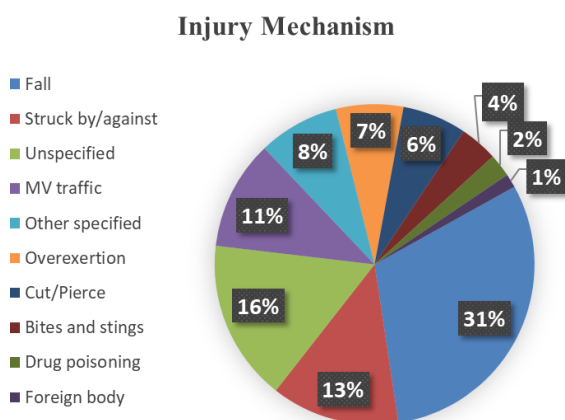
Injury Mechanism	Count
Poisoning	1,378
MV traffic	657
Firearm	650
Fall	376
Suffocation	308
Not specified	229
Other	150
Fire/Flame	71
Drowning	52
Cut/Pierce	36

Inpatient Hospitalizations



Injury Mechanism	Count
Fall	12,055
Drug poisoning	3,292
Unspecified	2,354
MV traffic	2,333
Other	1,204
Struck by/against	589
Firearm	392
MV non-traffic	318
Cut/Pierce	315
Non-drug poisoning	206
Other land transport	152

Emergency Department Visits



Injury Mechanism	Count
Fall	142,922
Struck by/against	60,456
Unspecified	75,844
MV traffic	51,481
Other specified	38,182
Overexertion	31,700
Cut/Pierce	30,275
Bites and stings	17,887
Drug poisoning	10,853
Foreign body	6,397

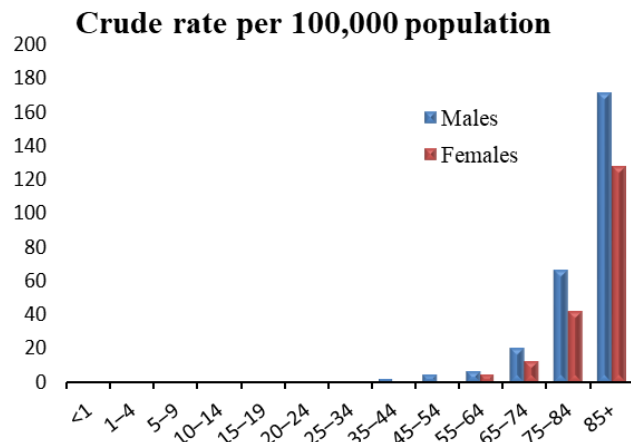
Unintentional Falls by Age and Sex

Mortality

Total: 365 (6.8*)

Males: 195 (8.7*)

Females: 170 (5.4*)

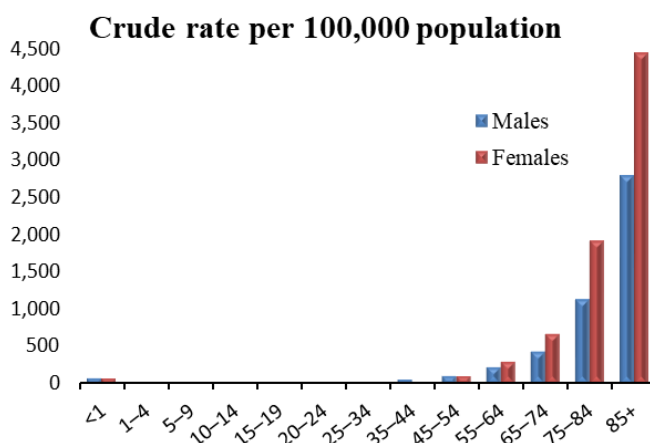


Age	Males	Females
<1	0	#
1-4	0	0
5-9	0	0
10-14	0	0
15-19	#	#
20-24	0	0
25-34	#	#
35-44	6	#
45-54	13	#
55-64	19	13
65-74	43	29
75-84	64	53
85+	48	69

Inpatient Hospitalization

Total: 12,045 (224.1*)

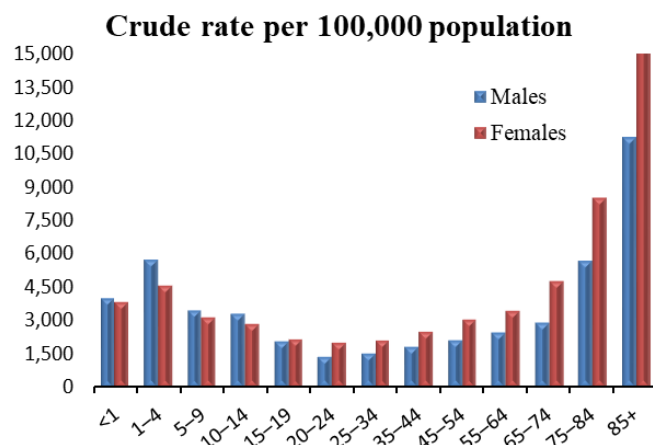
Males: 4,168 (180.9*) Females 7,877 (253.1*)



Age	Males	Females
<1	20	20
1-4	27	21
5-9	38	27
10-14	33	14
15-19	28	12
20-24	36	20
25-34	114	57
35-44	184	90
45-54	306	296
55-64	627	909
65-74	897	1,613
75-84	1,081	2,408
85+	777	2,390

Emergency Department Visits

Total: 142,872 (3,089.6*) Males: 59,708 (2,734.6*) Females: 83,164 (3,393.7*)



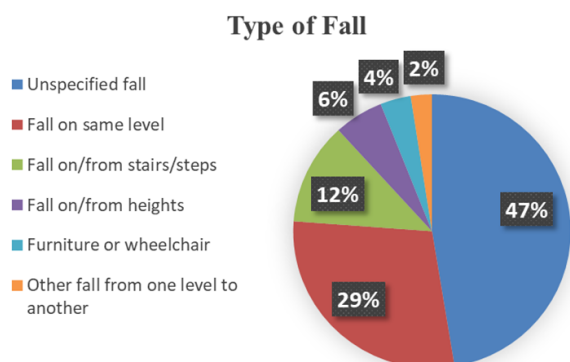
Age	Males	Females
<1	1,087	1,000
1-4	6,489	4,904
5-9	4,936	4,244
10-14	4,811	4,026
15-19	3,024	2,999
20-24	2,139	2,947
25-34	4,531	6,180
35-44	5,049	6,990
45-54	5,915	8,696
55-64	7,060	10,693
65-74	6,109	11,471
75-84	5,432	10,707
85+	3,126	8,307

*Age-adjusted rate per 100,000 population

#At least one but fewer than five

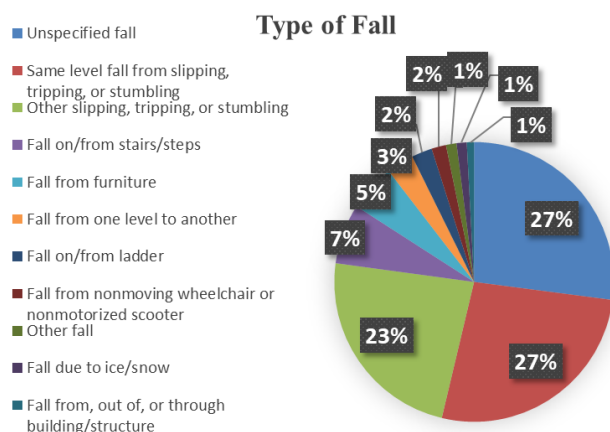
Unintentional Falls by Type of Fall

Mortality



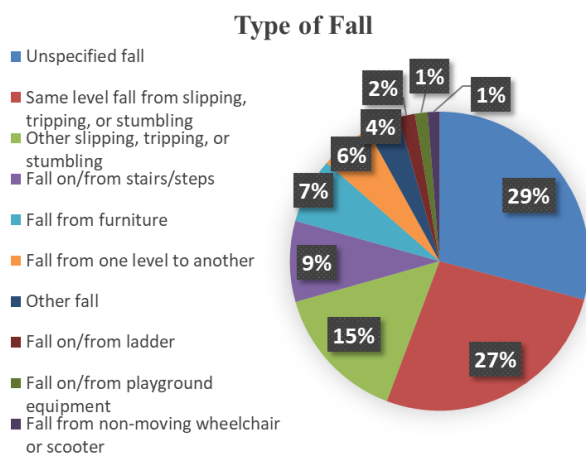
Type of Fall	Count
Unspecified fall	173
Fall on same level	105
Fall on/from stairs/steps	44
Fall on/from heights	21
Furniture or wheelchair	13
Other fall from one level to another	9

Inpatient Hospitalizations



Type of Fall	Count
Unspecified fall	3,260
Same level fall from slipping, tripping, or stumbling	3,211
Other slipping, tripping, or stumbling	2,821
Fall on/from stairs/steps	837
Fall from furniture	657
Fall from one level to another	380
Fall on/from ladder	287
Fall from nonmoving wheelchair or nonmotorized scooter	203
Other fall	146
Fall due to ice/snow	142
Fall from, out of, or through building/structure	101

Emergency Department Visits



Type of Fall	Count
Unspecified fall	41,646
Same level fall from slipping, tripping, or stumbling	37,977
Other slipping, tripping, or stumbling	21,248
Fall on/from stairs/steps	12,500
Fall from furniture	10,105
Fall from one level to another	7,983
Other fall	5,105
Fall on/from ladder	2,535
Fall on/from playground equipment	1,952
Fall from non-moving wheelchair or scooter	1,821

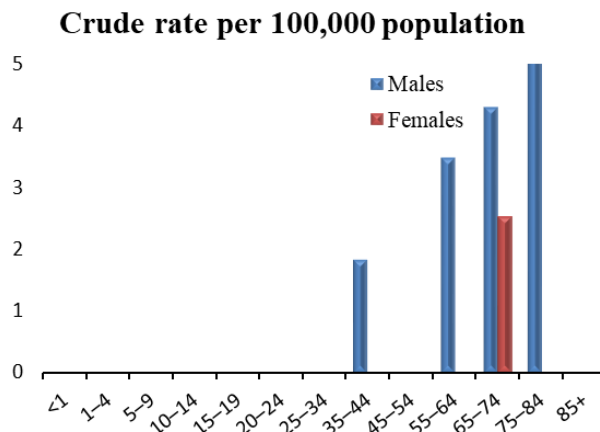
Unintentional Fire-Related Injuries by Age and Sex

Mortality

Total: 65 (1.3*)

Males: 42 (1.8*)

Females: 23 (0.9*)



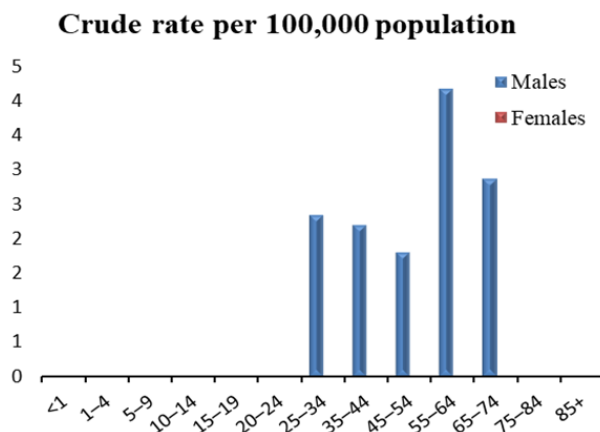
Age	Males	Females
<1	0	0
1-4	#	#
5-9	0	#
10-14	#	#
15-19	#	#
20-24	#	0
25-34	0	#
35-44	5	0
45-54	#	#
55-64	10	#
65-74	9	6
75-84	6	#
85+	#	#

Inpatient Hospitalizations

Total: 66 (1.4*)

Males: 51 (2.2*)

Females: 15 (0.6*)



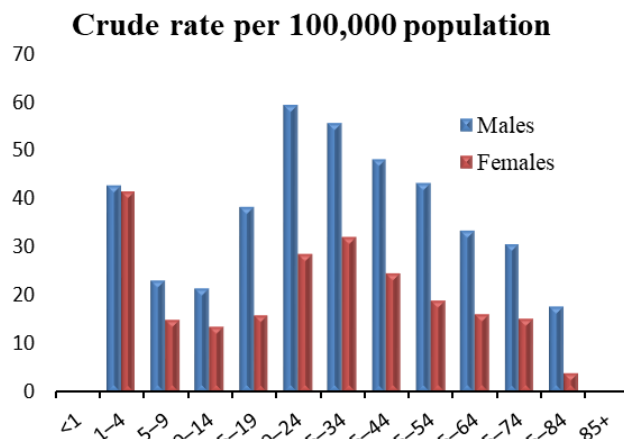
Age	Males	Females
<1	#	0
1-4	#	#
5-9	#	#
10-14	#	0
15-19	#	0
20-24	0	#
25-34	7	0
35-44	6	#
45-54	5	#
55-64	12	#
65-74	6	#
75-84	#	0
85+	0	0

Emergency Department Visits

Total: 1,321 (30.4*)

Males: 867 (39.8*)

Females: 454 (21.0*)



Age	Males	Females
<1	##	#
1-4	48	44
5-9	33	20
10-14	31	19
15-19	56	22
20-24	91	41
25-34	166	92
35-44	132	68
45-54	120	54
55-64	96	50
65-74	64	36
75-84	17	5
85+	#	#

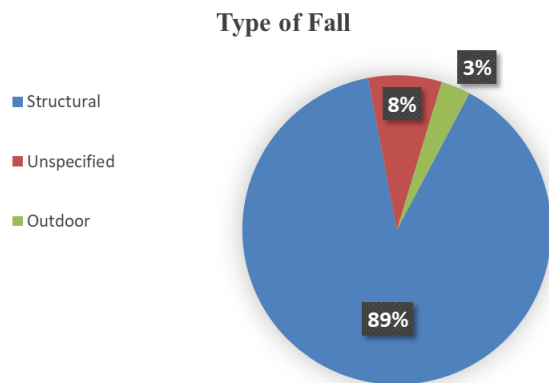
*Age-adjusted rate per 100,000 population

#At least one but fewer than five

##Suppressed to prevent indirect disclosure

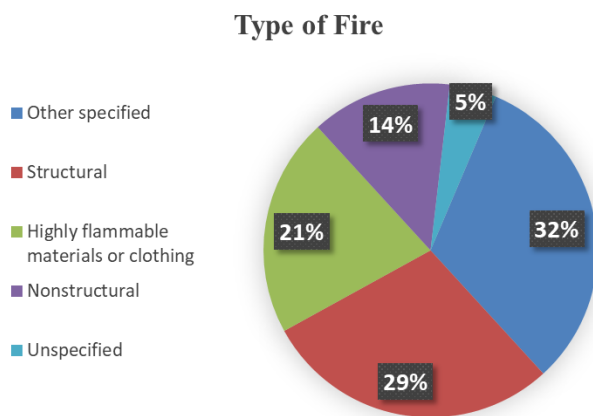
Unintentional Fire-Related Injuries by Type of Fire

Mortality



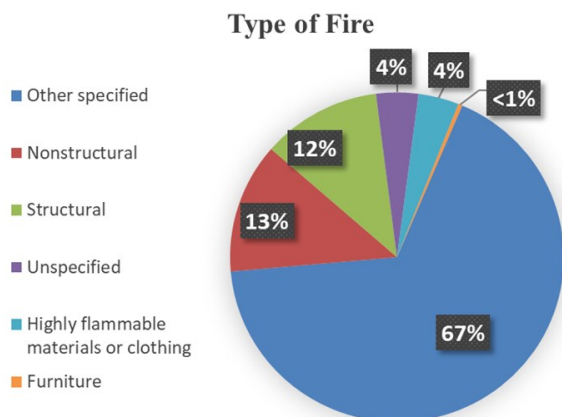
Type of Fire	Count
Structural	58
Unspecified	##
Outdoor	#

Inpatient Hospitalizations



Type of Fire	Count
Other specified	21
Structural	19
Highly flammable materials or clothing	14
Nonstructural	##
Unspecified	#

Emergency Department Visits



Type of Fire	Count
Other specified	888
Nonstructural	169
Structural	153
Unspecified	54
Highly flammable materials or clothing	52
Furniture	5

#At least one but fewer than five

##Suppressed to prevent indirect disclosure

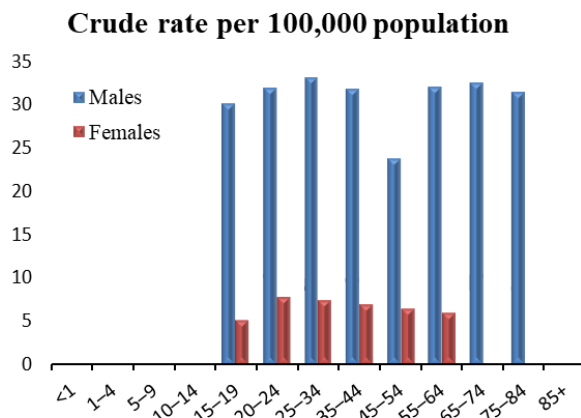
Firearm-Related Injuries by Age and Sex

Mortality

Total: 650 (14.2*)

Males: 550 (24.3*)

Females: 100 (4.5*)



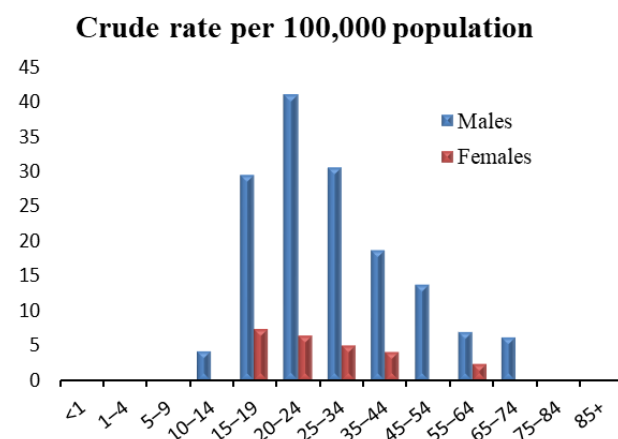
Age	Males	Females
<1	0	#
1-4	0	0
5-9	0	0
10-14	#	0
15-19	44	7
20-24	49	11
25-34	99	21
35-44	87	19
45-54	66	18
55-64	92	18
65-74	68	#
75-84	30	#
85+	##	0

Inpatient Hospitalizations

Total: 392 (9.2*)

Males: 333 (15.5*)

Females: 59 (2.8*)



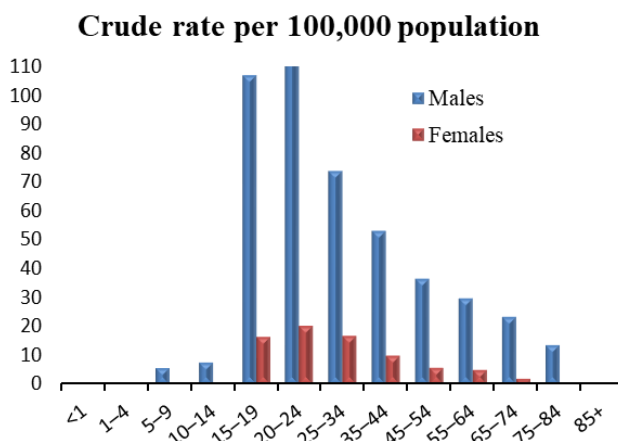
Age	Males	Females
<1	0	0
1-4	#	0
5-9	#	#
10-14	6	#
15-19	43	10
20-24	63	9
25-34	91	14
35-44	51	11
45-54	38	#
55-64	20	7
65-74	13	#
75-84	#	0
85+	#	0

Emergency Department Visits

Total: 1,154 (26.8*)

Males: 983 (45.3*)

Females: 171 (8.0*)



Age	Males	Females
<1	#	0
1-4	#	#
5-9	8	#
10-14	11	#
15-19	157	23
20-24	181	29
25-34	221	48
35-44	146	27
45-54	102	17
55-64	86	16
65-74	49	5
75-84	13	#
85+	#	#

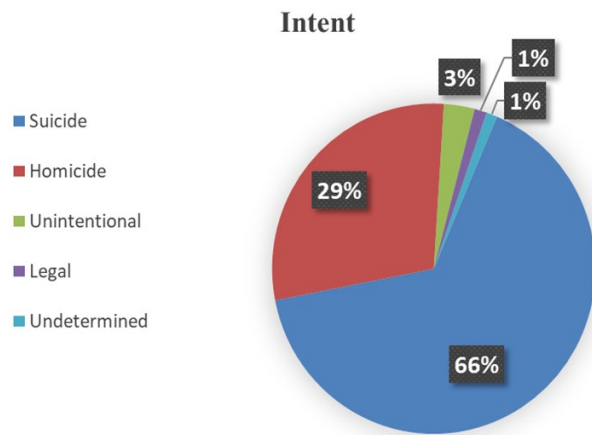
*Age-adjusted rate per 100,000 population

#At least one but fewer than five

##Suppressed to prevent indirect disclosure

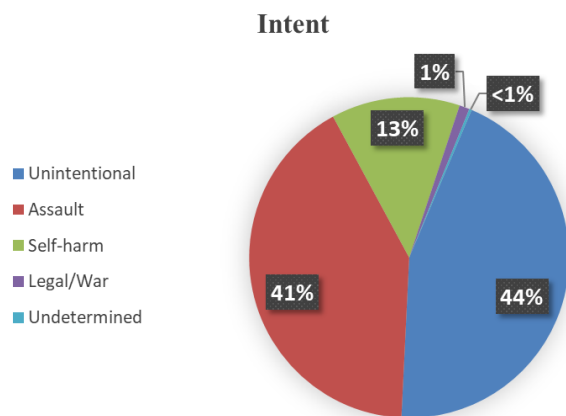
Firearm-Related Injuries by Intent

Mortality



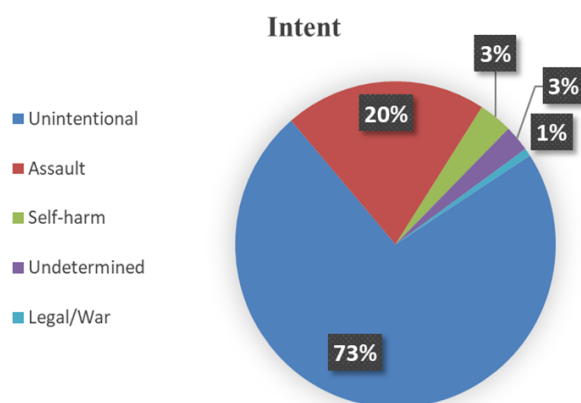
Intent	Count
Suicide	426
Homicide	189
Unintentional	20
Undetermined	8
Legal	7

Inpatient Hospitalizations



Intent	Count
Unintentional	174
Assault	162
Self-harm	51
Legal/War	#
Undetermined	#

Emergency Department Visits



Intent	Count
Unintentional	841
Assault	235
Self-harm	39
Undetermined	30
Legal/War	9

#At least one but fewer than five

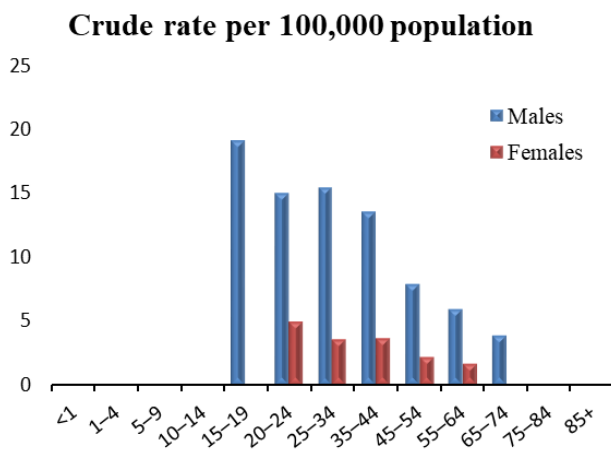
Homicide and Assault by Age and Sex

Mortality

Total: 233 (5.5*)

Males: 188 (8.8*)

Females: 45 (2.1*)



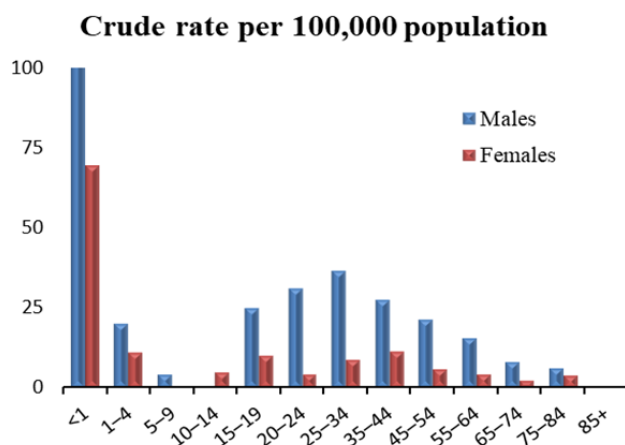
Age	Males	Females
<1	0	#
1-4	#	0
5-9	#	0
10-14	#	0
15-19	28	#
20-24	23	7
25-34	46	10
35-44	37	10
45-54	22	6
55-64	17	5
65-74	8	0
75-84	#	#
85+	0	0

Inpatient Hospitalizations

Total: 631 (14.9*)

Males: 468 (21.9*)

Females: 163 (7.8*)



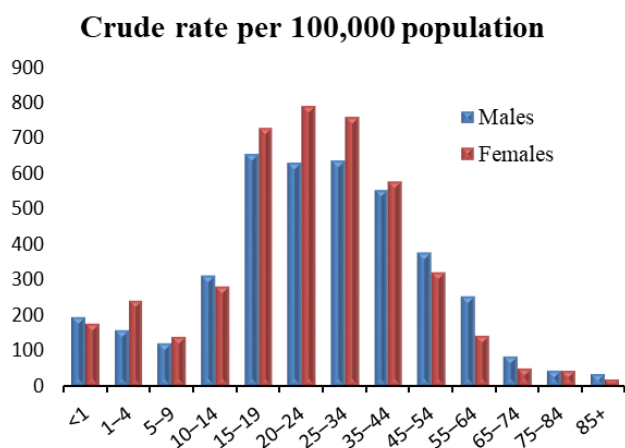
Age	Males	Females
<1	33	18
1-4	23	12
5-9	6	#
10-14	#	7
15-19	37	14
20-24	48	6
25-34	110	26
35-44	76	32
45-54	60	17
55-64	45	13
65-74	17	6
75-84	6	5
85+	#	#

Emergency Department Visits

Total: 16,498 (396.9*)

Males: 8,174 (387.4*)

Females: 8,324 (407.9*)



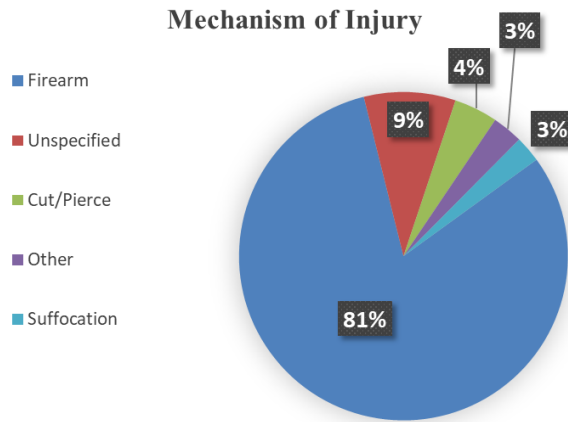
Age	Males	Females
<1	53	45
1-4	178	256
5-9	171	187
10-14	448	389
15-19	956	1,011
20-24	965	1,136
25-34	1,900	2,178
35-44	1,510	1,589
45-54	1,045	910
55-64	722	440
65-74	176	118
75-84	41	55
85+	9	10

*Age-adjusted rate per 100,000 population

#At least one but fewer than five

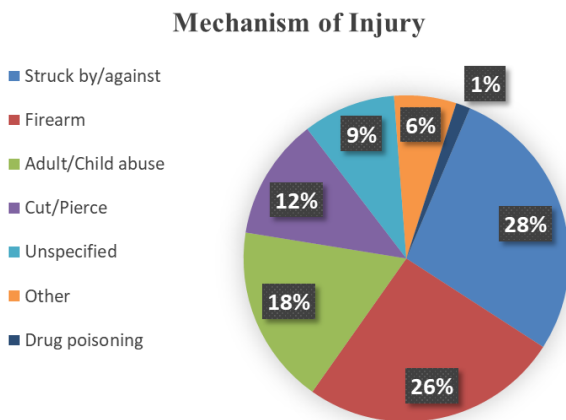
Homicide and Assault by Mechanism of Injury

Mortality



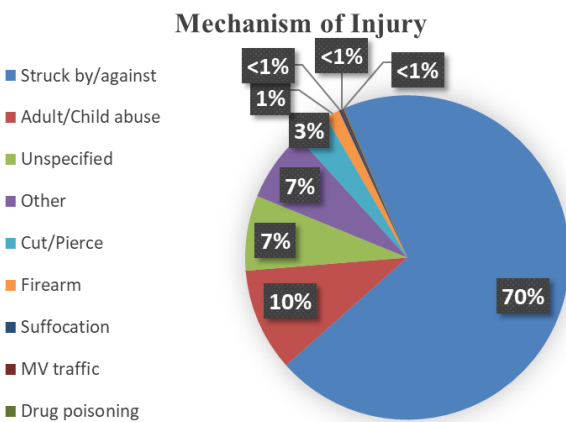
Mechanism of Injury	Count
Firearm	189
Cut/Pierce	21
Other	10
Unspecified	7
Suffocation	6

Inpatient Hospitalizations



Mechanism of Injury	Count
Struck by/against	175
Firearm	162
Adult/Child abuse	112
Cut/Pierce	76
Unspecified	58
Other	39
Drug poisoning	9

Emergency Department Visits



Mechanism of Injury	Count
Struck by/against	11,519
Adult/Child abuse	1,694
Unspecified	1,236
Other	1,170
Cut/Pierce	553
Firearm	235
Suffocation	43
MV traffic	30
Drug poisoning	18

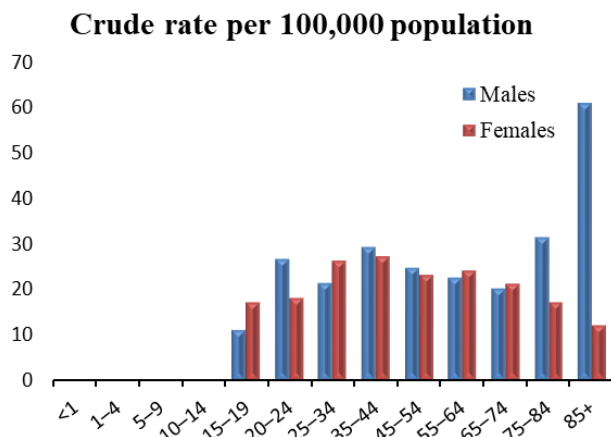
Unintentional MV Traffic Crashes by Age and Sex

Mortality

Total: 657 (14.4*)

Males: 433 (19.7*)

Females: 224 (9.3*)



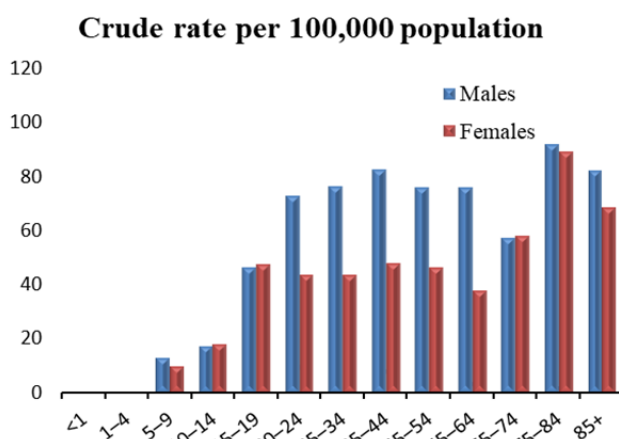
Age	Males	Females
<1	#	#
1-4	#	#
5-9	#	#
10-14	#	#
15-19	16	11
20-24	41	14
25-34	64	27
35-44	80	28
45-54	69	33
55-64	65	30
65-74	42	27
75-84	30	32
85+	17	13

Inpatient Hospitalizations

Total: 2,323 (50.9*)

Males: 1,351 (60.9*)

Females: 972 (41.2*)



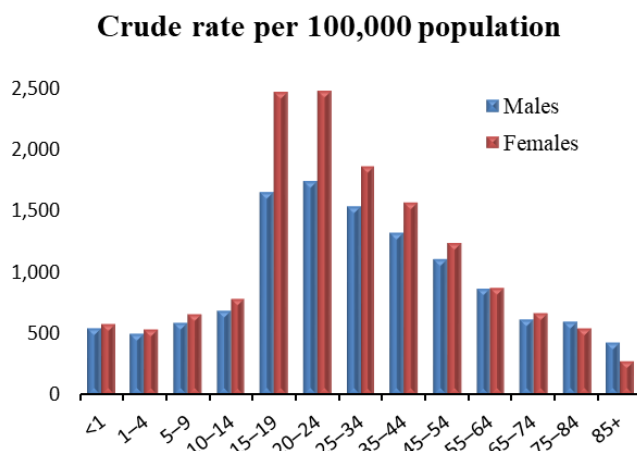
Age	Males	Females
<1	#	#
1-4	##	##
5-9	18	13
10-14	25	25
15-19	68	66
20-24	112	63
25-34	229	126
35-44	227	133
45-54	212	132
55-64	219	117
65-74	120	138
75-84	88	112
85+	23	37

Emergency Department Visits

Total: 51,418 (1,192.9*)

Males: 23,369 (1,082.4*)

Females: 28,049 (1,308.2*)



Age	Males	Females
<1	148	151
1-4	567	574
5-9	840	882
10-14	998	1,088
15-19	2,418	3,432
20-24	2,668	3,559
25-34	4,572	5,374
35-44	3,614	4,340
45-54	3,080	3,518
55-64	2,477	2,714
65-74	1,296	1,584
75-84	571	684
85+	120	149

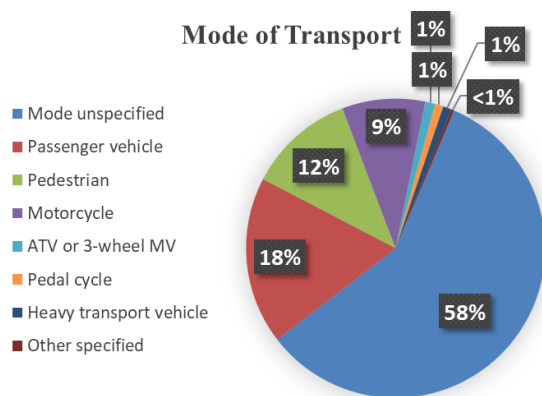
*Age-adjusted rate per 100,000 population

#At least one but fewer than five

##Suppressed to prevent indirect disclosure

Unintentional MV Traffic Crashes by Mode of Transport

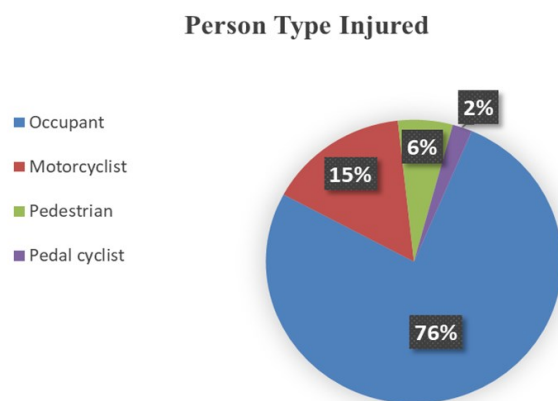
Mortality



Mode of Transport	Count
Mode unspecified	382
Passenger vehicle	119
Pedestrian	76
Motorcycle	59
Heavy transport vehicle	7
ATV or 3-wheel MV	6
Pedal cycle	##
Other specified	#

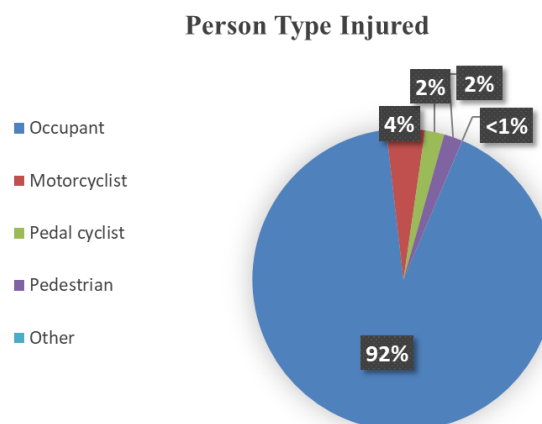
Note: "Other specified" includes persons whose mode of transport was an animal, animal-drawn vehicle, railway train, railway vehicle, streetcar, special vehicle mainly used on industrial premises, or special construction vehicle.

Inpatient Hospitalizations



Person Type Injured	Count
Occupant	1,776
Motorcyclist	358
Pedestrian	139
Pedal cyclist	50

Emergency Department Visits



Person Type Injured	Count
Occupant	47,197
Motorcyclist	2,116
Pedal cyclist	1,065
Pedestrian	1,033
Other	7

Note: "Other" includes emergency department visits due to injuries related to persons boarding and alighting and unspecified occupants of a motor vehicle.

#At least one but fewer than five

##Suppressed to prevent indirect disclosure

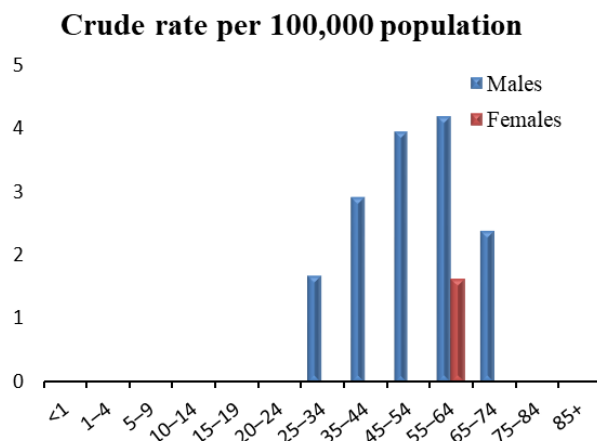
Non-Drug Poisoning by Age and Sex

Mortality

Total: 62 (1.3*)

Males: 45 (1.9*)

Females: 17 (0.7*)



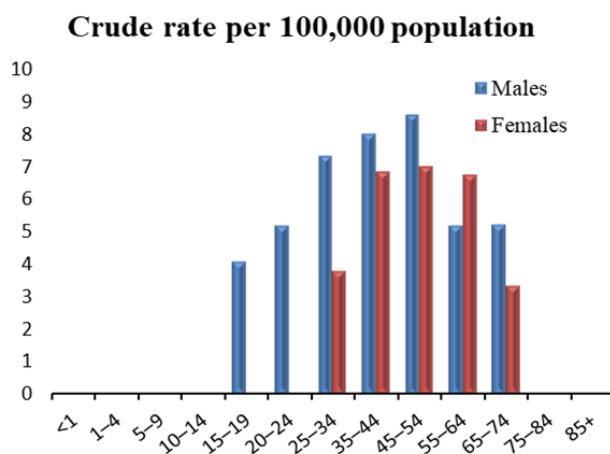
Age	Males	Females
<1	0	0
1-4	0	0
5-9	0	0
10-14	0	#
15-19	#	0
20-24	#	#
25-34	5	0
35-44	8	#
45-54	11	#
55-64	12	5
65-74	5	#
75-84	0	#
85+	#	0

Inpatient Hospitalizations

Total: 206 (4.6*)

Males: 117 (5.3*)

Females: 89 (3.9*)



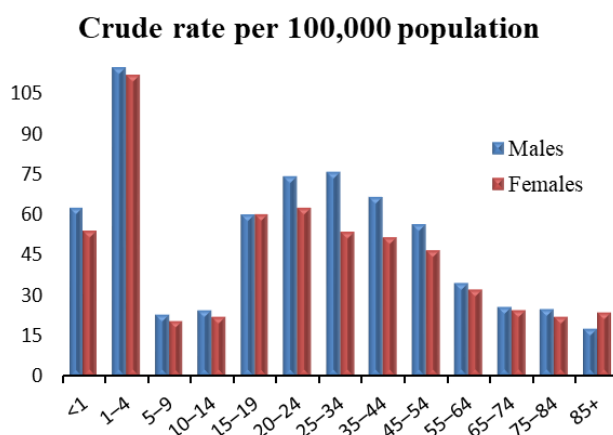
Age	Males	Females
<1	0	0
1-4	#	#
5-9	#	0
10-14	0	0
15-19	6	#
20-24	8	#
25-34	22	11
35-44	22	19
45-54	24	20
55-64	15	21
65-74	11	8
75-84	#	#
85+	#	0

Emergency Department Visits

Total: 2,166 (50.7*)

Males: 1,168 (54.9*)

Females: 998 (46.4*)



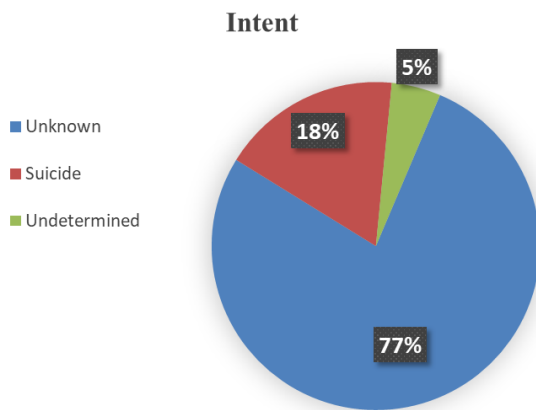
Age	Males	Females
<1	17	14
1-4	129	119
5-9	33	28
10-14	36	31
15-19	88	84
20-24	114	90
25-34	227	155
35-44	183	143
45-54	158	133
55-64	100	101
65-74	54	59
75-84	24	28
85+	5	13

*Age-adjusted rate per 100,000 population

#At least one but fewer than five

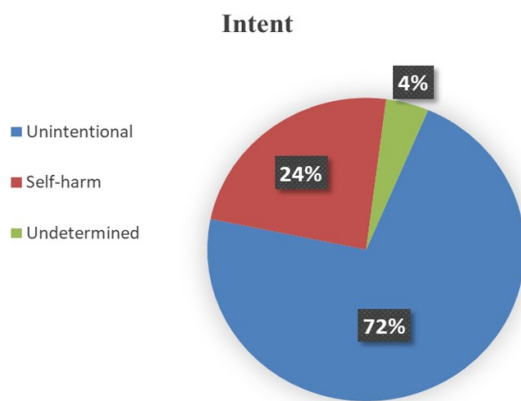
Non-Drug Poisoning by Intent

Mortality



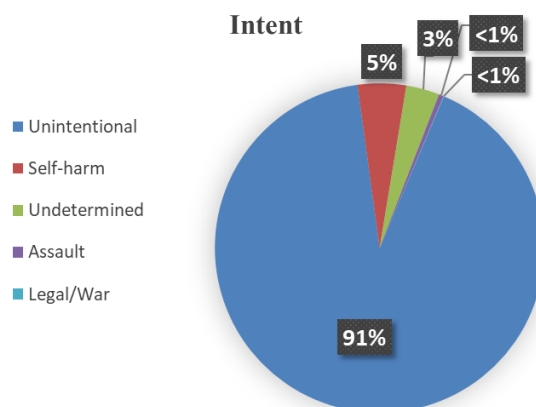
Intent	Count
Unknown	48
Suicide	##
Undetermined	#

Inpatient Hospitalizations



Intent	Count
Unintentional	148
Self-harm	49
Undetermined	9

Emergency Department Visits



Intent	Count
Unintentional	1,981
Self-harm	103
Undetermined	71
Assault	##
Legal/War	#

#At least one but fewer than five

##Suppressed to prevent indirect disclosure

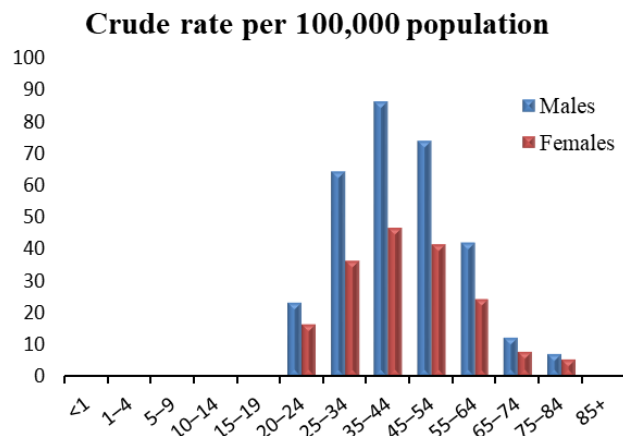
Drug Poisoning by Age and Sex

Mortality

Total: 1,316 (30.8*)

Males: 834 (39.4*)

Females: 482 (22.2*)



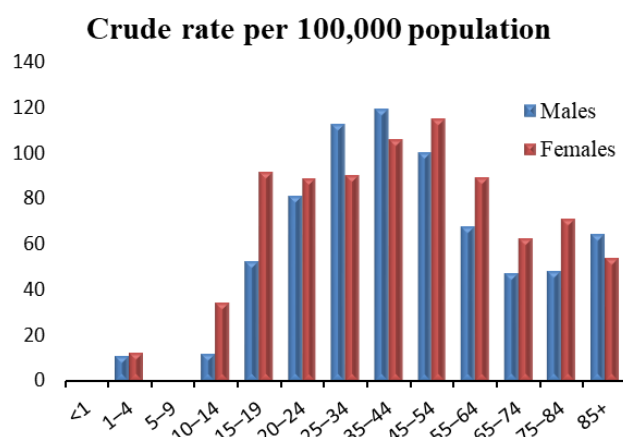
Age	Males	Females
<1	0	0
1-4	0	0
5-9	0	0
10-14	#	0
15-19	##	#
20-24	36	24
25-34	193	105
35-44	237	129
45-54	207	118
55-64	122	76
65-74	26	19
75-84	7	7
85+	0	#

Inpatient Hospitalizations

Total: 3,292 (74.3*)

Males: 1,541 (71.4*)

Females: 1,751 (77.0*)



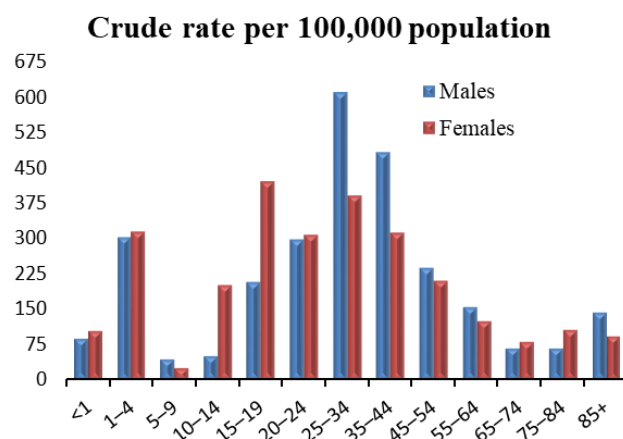
Age	Males	Females
<1	#	#
1-4	12	13
5-9	##	#
10-14	17	48
15-19	77	128
20-24	125	128
25-34	338	261
35-44	328	294
45-54	280	328
55-64	195	278
65-74	99	149
75-84	46	89
85+	18	29

Emergency Department Visits

Total: 10,853 (258.9*)

Males: 5,784 (276.8*)

Females: 5,069 (241.3*)



Age	Males	Females
<1	24	27
1-4	342	337
5-9	65	34
10-14	74	281
15-19	307	587
20-24	460	445
25-34	1,826	1,128
35-44	1,325	864
45-54	667	602
55-64	446	387
65-74	143	194
75-84	65	133
85+	40	50

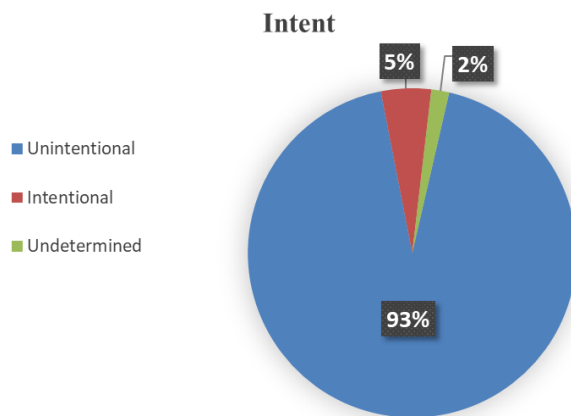
*Age-adjusted rate per 100,000 population

#At least one but fewer than five

##Suppressed to prevent indirect disclosure

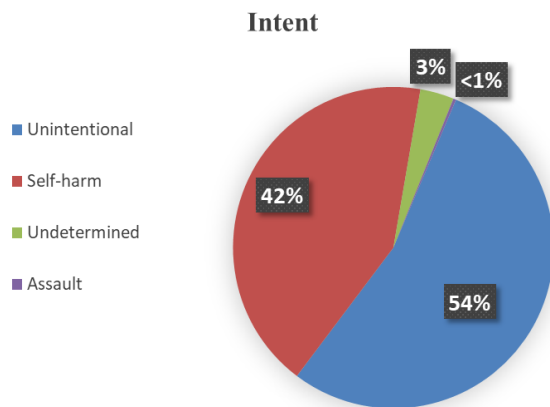
Drug Poisoning by Intent

Mortality



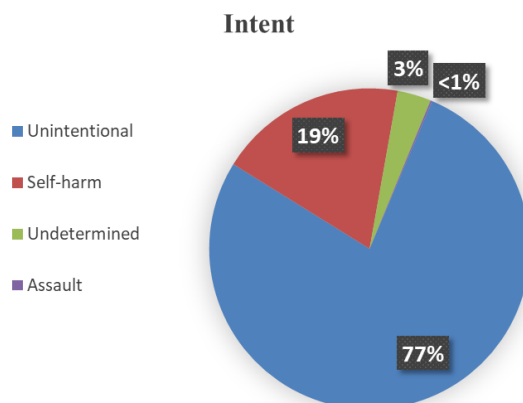
Intent	Count
Unintentional	1,228
Intentional	65
Undetermined	23

Inpatient Hospitalizations



Intent	Count
Unintentional	1,774
Self-harm	1,397
Undetermined	112
Assault	9

Emergency Department Visits



Intent	Count
Unintentional	8,405
Self-harm	2,060
Undetermined	370
Assault	18

Suicide and Self-Injury by Age and Sex

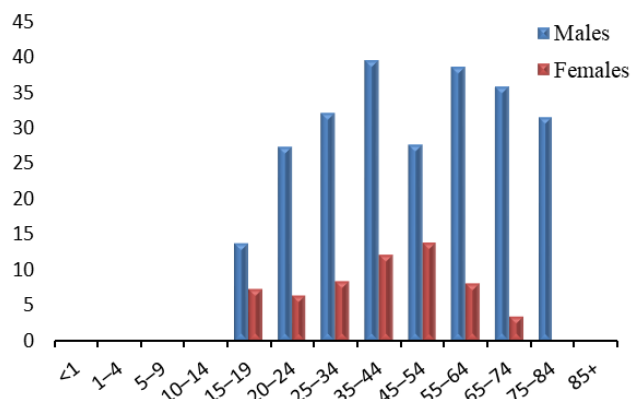
Mortality

Total: 727 (15.9*)

Males: 573 (25.2*)

Females: 154 (7.0*)

Crude rate per 100,000 population



Age	Males	Females
<1	0	0
1-4	0	0
5-9	0	0
10-14	#	#
15-19	20	10
20-24	42	9
25-34	96	24
35-44	108	33
45-54	77	39
55-64	111	25
65-74	75	8
75-84	30	#
85+	##	0

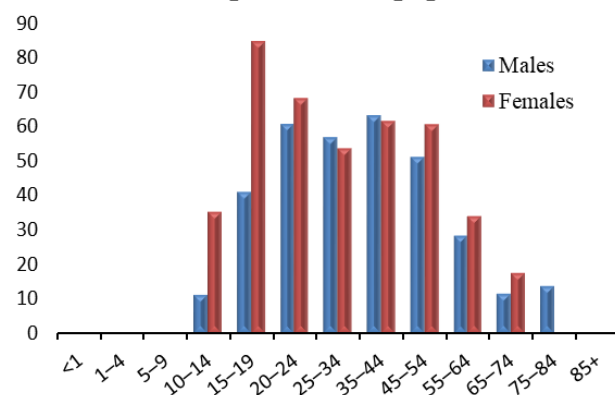
Inpatient Hospitalizations

Total: 1,702 (39.8*)

Males: 775 (36.5*)

Females: 927 (43.2*)

Crude rate per 100,000 population



Age	Males	Females
<1	0	0
1-4	0	0
5-9	#	0
10-14	16	49
15-19	60	118
20-24	93	98
25-34	170	154
35-44	173	170
45-54	142	172
55-64	81	105
65-74	24	41
75-84	13	##
85+	#	#

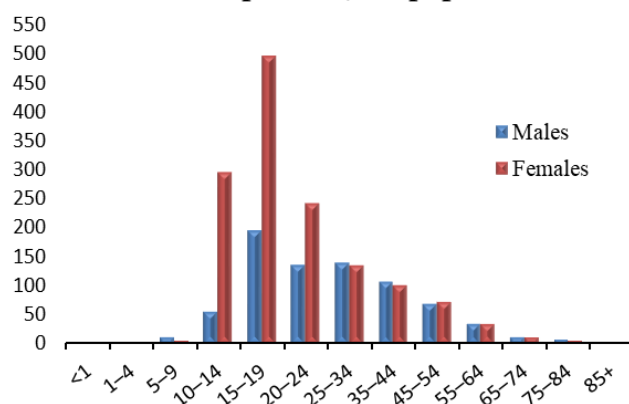
Emergency Department Visits

Total: 4,125 (100.1*)

Males: 1,638 (78.3*)

Females: 2,487 (123.0*)

Crude rate per 100,000 population



Age	Males	Females
<1	0	0
1-4	#	#
5-9	16	9
10-14	82	413
15-19	285	692
20-24	209	351
25-34	417	390
35-44	297	279
45-54	192	210
55-64	101	106
65-74	26	26
75-84	7	7
85+	#	#

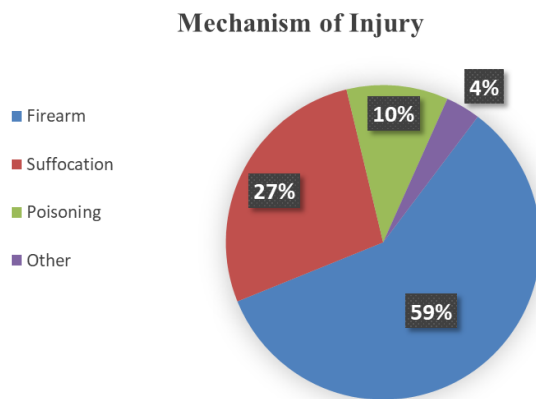
*Age-adjusted rate per 100,000 population

#At least one but fewer than five

##Suppressed to prevent indirect disclosure

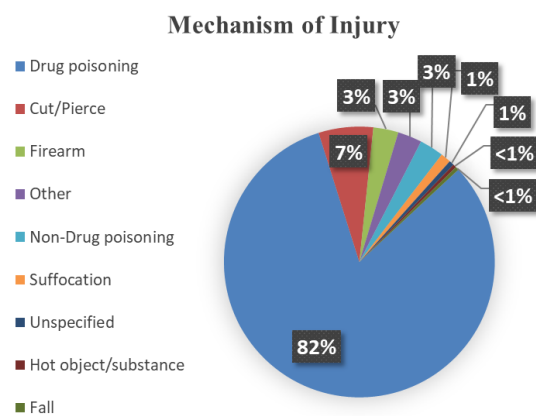
Suicide and Self-Injury by Mechanism of Injury

Mortality



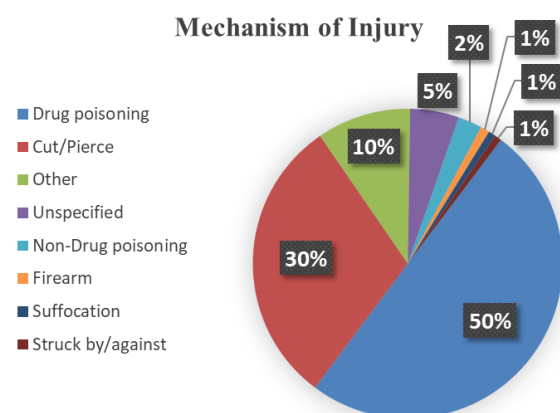
Mechanism of Injury	Count
Firearm	426
Suffocation	199
Poisoning	76
Other	26

Inpatient Hospitalizations



Mechanism of Injury	Count
Drug poisoning	1,397
Cut/Pierce	111
Firearm	51
Other	49
Non-Drug poisoning	49
Suffocation	21
Unspecified	10
Hot object/substance	7
Fall	7

Emergency Department Visits



Mechanism of Injury	Count
Drug poisoning	2,060
Cut/Pierce	1,246
Other	405
Unspecified	211
Non-Drug poisoning	103
Firearm	39
Suffocation	31
Struck by/against	30

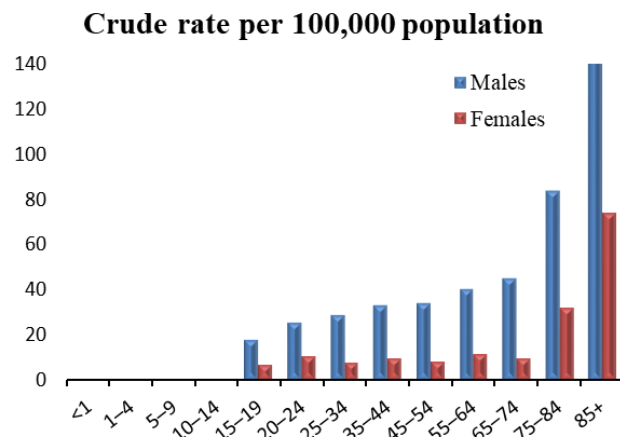
Traumatic Brain Injury by Age and Sex

Mortality

Total: 917 (19.2*)

Males: 677 (30.0*)

Females: 240 (9.4*)



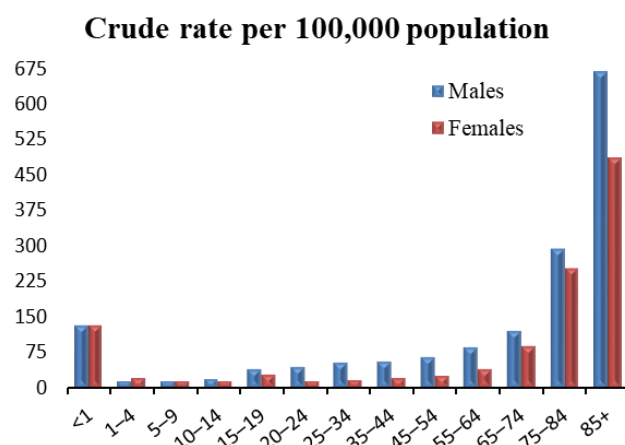
Age	Males	Females
<1	0	#
1-4	#	0
5-9	0	0
10-14	##	#
15-19	26	9
20-24	39	15
25-34	85	22
35-44	90	26
45-54	94	23
55-64	115	35
65-74	94	23
75-84	80	40
85+	46	40

Inpatient Hospitalizations

Total: 2,901 (59.2*)

Males: 1,666 (74.6*)

Females: 1,235 (45.3*)



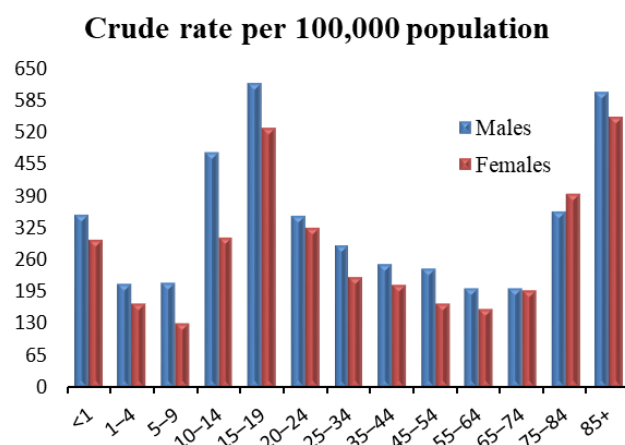
Age	Males	Females
<1	36	34
1-4	14	21
5-9	19	18
10-14	25	18
15-19	56	39
20-24	66	18
25-34	160	48
35-44	148	59
45-54	179	71
55-64	246	123
65-74	251	210
75-84	280	315
85+	186	261

Emergency Department Visits

Total: 12,071 (275.5*)

Males: 6,530 (304.3*)

Females: 5,541 (246.1*)



Age	Males	Females
<1	96	78
1-4	238	184
5-9	304	177
10-14	693	424
15-19	907	735
20-24	539	468
25-34	867	650
35-44	689	577
45-54	676	491
55-64	585	497
65-74	426	470
75-84	342	494
85+	168	296

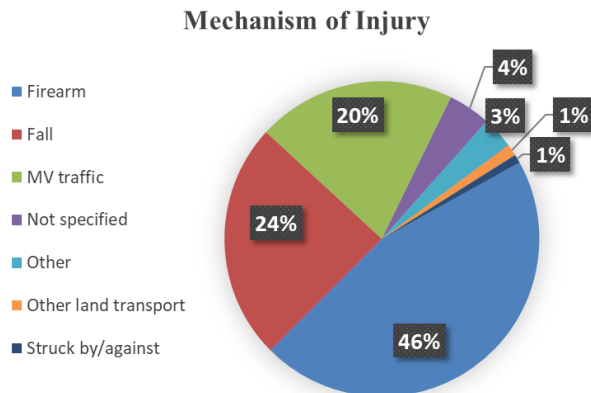
*Age-adjusted rate per 100,000 population

#At least one but fewer than five

##Suppressed to prevent indirect disclosure

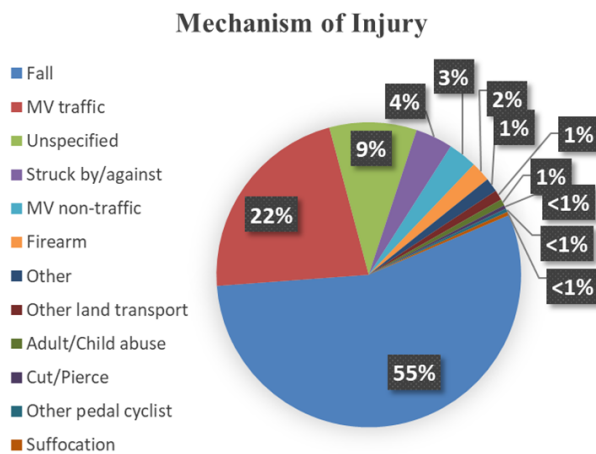
Traumatic Brain Injury by Mechanism of Injury

Mortality



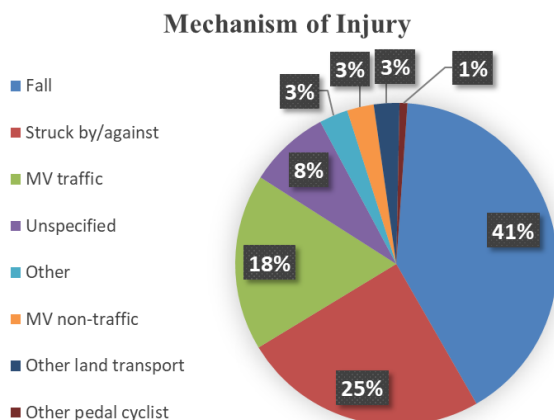
Mechanism of Injury	Count
Firearm	418
Fall	223
MV traffic	187
Not specified	40
Other	30
Other land transport	11
Struck by/against	8

Inpatient Hospitalizations



Mechanism of Injury	Count
Fall	1,602
MV traffic	638
Unspecified	269
Struck by/against	115
MV non-traffic	89
Firearm	61
Other	43
Other land transport	31
Adult/Child abuse	20
Cut/Pierce	11
Other pedal cyclist	11
Suffocation	11

Emergency Department Visits



Mechanism of Injury	Count
Fall	4,900
Struck by/against	2,972
MV traffic	2,137
Unspecified	985
Other	348
MV non-traffic	324
Other land transport	310
Other pedal cyclist	95