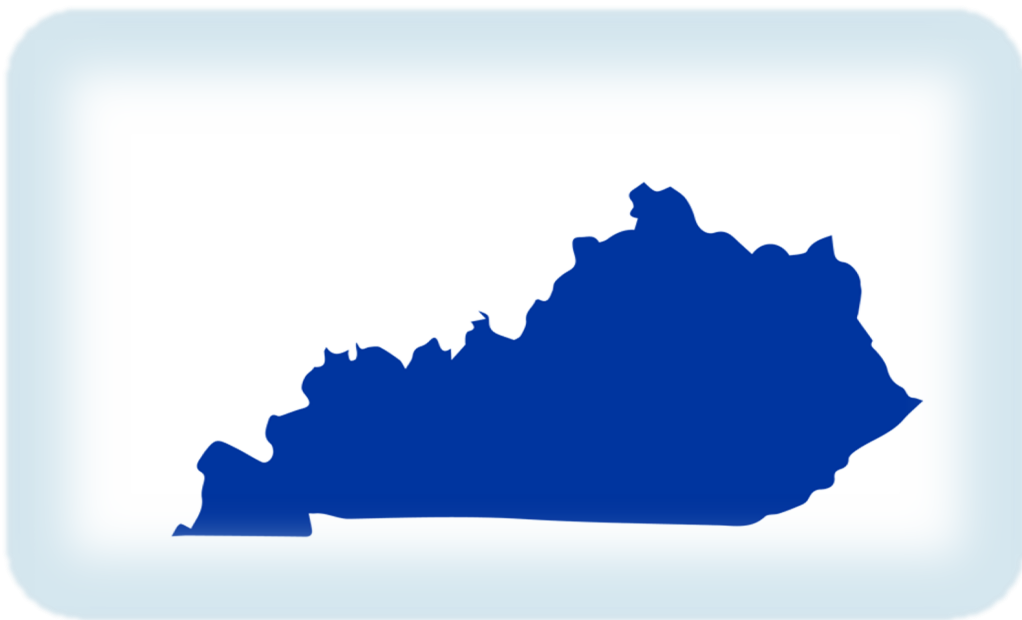


KENTUCKY INJURY INDICATORS



2021

KENTUCKY VIOLENCE AND INJURY PREVENTION PROGRAM (KVIPP)

COOPERATIVE AGREEMENT No. NU17CE010064

KENTUCKY INJURY PREVENTION AND RESEARCH CENTER

JANUARY 2023



This page intentionally left blank.

ACKNOWLEDGMENTS

This report is funded through the Core State Injury Prevention Program by the National Center on Injury Prevention and Control at the Centers for Disease Control and Prevention, Agreement No. NU17CE010064.

Prepared by

**Alaina Murphy
Ashley M. Bush**

Released by

Kentucky Violence and Injury Prevention Program
Kentucky Injury Prevention and Research Center
University of Kentucky College of Public Health
Lexington, Kentucky 40504

Suggested citation: *Kentucky Injury Indicators, 2021*. Kentucky Injury Prevention and Research Center; January 2023.

This page intentionally left blank.

TABLE OF CONTENTS

Executive Summary	1
Data Sources and Methods.....	2
 10 Leading Causes of Injury by Age Group and Intent	
Definitions for Injury Data Matrices	4
Mortalities	5
Inpatient Hospitalizations	6
Emergency Department Visits.....	7
 Injury Indicators	
All Injuries.....	8
Unintentional Falls.....	10
Unintentional Fire-Related Injuries.....	12
Firearm-Related Injuries.....	14
Homicide and Assault	16
Unintentional Motor Vehicle Traffic Crashes	18
Nondrug Poisoning	20
Drug Poisoning	22
Suicide and Self-Harm Injury	24
Traumatic Brain Injury	26

Abbreviations

CDC	Centers for Disease Control and Prevention
CSTE	Council of State and Territorial Epidemiologists
ED	emergency department
ICD	International Classification of Diseases
ICD-10-CM	International Classification of Diseases, Clinical Modifications – Tenth Revision
KIPRC	Kentucky Injury Prevention and Research Center
MV	motor vehicle
ATV	all-terrain vehicle
PCR	police collision report
TBI	traumatic brain injury

Executive Summary

Mortalities

There were 5,204 injury mortalities among Kentucky residents in 2021. Kentucky's overall age-adjusted injury mortality rate was 115.1 per 100,000 Kentucky resident population. The male and female age-adjusted rates were 163.6 and 68.0, respectively.

The leading mechanisms of injury mortality for Kentucky residents were *poisonings* (2,315), *fire-arms* (875), and *motor vehicle traffic crashes* (673). Males had higher age-adjusted mortality rates across these three injury mechanisms than did females. Ninety-seven percent of the poisonings were drug poisonings. The majority of the drug poisonings were unintentional (96%), involving prescription medications and/or illicit drugs. The majority of firearm injury-related deaths were intentional (95%).

There were 1,086 mortalities from traumatic brain injuries (TBI), where TBI was reported as a cause of death on the death certificate alone or in combination with other injuries or conditions, an age-adjusted rate of 23.0 per 100,000. Males (36.1 per 100,000) had a higher age-adjusted rate than females (10.9 per 100,000) for TBI mortalities.

Inpatient Hospitalizations

There were 22,393 injury-related inpatient hospitalization encounters among Kentucky residents in 2021. The age-adjusted rate for injury-related hospitalizations per 100,000 Kentucky resident population was 453.7. The male and female age-adjusted rates were 461.6 and 434.2, respectively.

The leading mechanisms of injury-related hospitalizations were *falls* (11,457), *drug poisonings* (3,199), and *motor vehicle (MV) traffic crashes* (2,517). Across the leading injury mechanisms, unintentional injuries were the most common (e.g., 99% of falls, 59% of drug poisonings, and 99% of MV traffic crashes). The male and female age-adjusted rates for unintentional falls were 178.7 and 240.4, respectively. The majority (94%) of the unintentional fall hospitalizations occurred among residents aged 45 and older. Females (76.1 per 100,000) had a higher age-adjusted hospitalization rate for unintentional drug poisoning than males (68.3). Males (68.1 per 100,000) had a higher rate for unintentional MV traffic crash hospitalizations than females (41.2).

TBI (either TBI alone or in combination with other injuries) accounted for 3,015 hospitalizations. The majority of the TBI-related inpatient hospitalizations were unintentional (87%). *Falls* (52%) and *MV traffic crashes* (24%) were the leading mechanisms of TBI-related hospitalizations. Males (79.4 per 100,000) had a higher age-adjusted rate than females (44.4) for TBI hospitalizations.

Emergency Department Visits

There were 404,182 injury-related emergency department (ED) visits among Kentucky residents in 2021. The age-adjusted rate for injury-related ED visit discharges per 100,000 Kentucky resident population was 9,107.9. The male and female age-adjusted rates were 9,297.4 and 8,864.5, respectively.

The majority of the injury-related ED visits were unintentional (88%). The leading mechanisms of injury-related ED visits were *falls* (128,825), *unspecified* (62,521), being *struck by/against an object or person* (48,077), and *motor vehicle traffic crashes* (43,023). The majority of the falls were unintentional (99%). The male and female age-adjusted rates for unintentional fall-related ED visits were 2,394.0 and 3,037.4, respectively.

TBI (either TBI alone or in combination with other injuries) accounted for 10,573 ED visits. The majority of the TBI-related ED visits were unintentional (88%). The leading mechanisms of TBI-related ED visits were *falls* (43%), *struck by/against* (21%), and *MV traffic crashes* (19%). Males (251.1 per 100,000) had a higher age-adjusted rate than females (221.8) for TBI hospitalizations.

Data Sources and Methods

Data Sources

All data are provisional and subject to change.

Population Data

United States Census, Population Division. Single-Race Population Estimates, United States, 2020-2021. July 1st resident population by state, age, sex, single-race, and Hispanic origin, on CDC WONDER Online Database. Vintage 2021 estimates released by U.S. Census Bureau on June 30, 2022. Accessed at <http://wonder.cdc.gov/single-race-single-year-v2021.html>

Mortality Data

Kentucky Death Certificate Database, Kentucky Office of Vital Statistics, Cabinet for Health and Family Services

Inpatient Hospitalization Discharge Data

Kentucky Inpatient Hospitalization Claims Files, Office of Health Data and Analytics, Cabinet for Health and Family Services. Note: Counts represent encounters of care and could be greater than the number of individual patients treated at an acute care facility.

Emergency Department Visit Discharge Data

Kentucky Outpatient Services Database, Office of Health Data and Analytics, Cabinet for Health and Family Services. Note: Counts represent encounters of care and could be greater than the number of individual patients treated.

Methods

Injury-Related Mortality

The definitions for fatal injuries (deaths) used in this report correspond to the Centers for Disease Control and Prevention's (CDC's) "State Injury Indicators Report: Instructions for Preparing 2020 Data" that was released January 2022. An International Classification of Diseases, Tenth Revision [ICD-10] code in an underlying cause of death field was used to identify the mechanism and manner of fatal injuries.

A mortality count of at least one but fewer than six is suppressed per state data policy.

PLEASE NOTE: Death counts in this report are based on state death certificate files and thus cannot be expected to match counts based on other sources. In particular, numbers of motor vehicle traffic deaths will not match those based on police collision reports (PCRs) because the two systems do not report on identical underlying populations. Death certificates capture deaths of Kentucky residents regardless of where they occur; PCRs capture deaths that occur on Kentucky roads only, regardless of state of residence. Similarly, counts of homicides and assaults in this report will not match counts based on police crime reports. These data sources should be viewed as complementary. There also exist specialized death certificate-based surveillance systems for injury mortalities at both the state (e.g., the Kentucky Violent Death Reporting System and Child Fatality Reviews) and national levels (e.g., CDC's Web-Based Injury Statistics Query and Reporting System [WISQARS] and Wide-ranging Online Data for Epidemiologic Research [WONDER]). Counts from those systems may not exactly match counts in

Injury-Related Inpatient Hospitalizations

Hospitalizations were limited to discharges from nonfederal, acute care, or inpatient facilities. The CDC's surveillance definition for injury hospitalizations was used; only initial encounters were included (indicated by a seventh character of "A" or missing in the International Classification of Diseases, Tenth Revision, Clinical Modification [ICD-10-CM] code). The injury subset for hospitalizations was created by selecting discharges having a principal diagnosis code.

The CDC external causes of injury matrix (updated November 2021) was used to categorize the injury visit by mechanism of injury and intent. Injury details were provided using external cause of morbidity codes, which are not required for discharge billing purposes; therefore, every injury hospitalization may not have this level of detail. Traumatic brain injury hospitalizations were defined using CDC's "State Injury Indicators Report: Instructions for Preparing 2020 Data".

Note that inpatient hospitalizations resulting in death are included in the total inpatient injury hospitalization count. An inpatient hospitalization count of at least one but fewer than five is suppressed per state data policy.

Injury-Related Emergency Department Visits

The CDC's surveillance definition for injury emergency department visits was used; only initial encounters were included (seventh character of "A" or missing) in the ED data set using ICD-10-CM diagnosis codes or external cause codes. The injury subset for ED visits was used, applying an any mention approach.

The CDC's external causes of injury matrix (updated November 2021) was used to categorize the injury visit by mechanism of injury and intent. The external causes of morbidity, which were used to provide injury details, are not required for discharge billing purposes; therefore, every injury ED visit may not have this level of detail. Traumatic brain injury hospitalizations were defined using CDC's "State Injury Indicators Report: Instructions for Preparing 2020 Data".

Note that ED visits, including those resulting in inpatient hospitalization or death, are included in the total injury ED visit count. An ED visit count of at least one but fewer than five is suppressed per state data policy.

Calculation of Rates and Data Presentation

All data were limited to Kentucky residents.

Two types of rates are reported. Age-specific ("crude") rates were calculated by dividing the number of injury events occurring in a particular age group by the estimated number of Kentucky residents in that age group in 2021 and multiplying by 100,000. Age-adjusted rates were adjusted to the year 2000 standard population. Rates based on counts of 20 or fewer may be unstable.

Note that data are presented as aggregated counts. Certain counts have been suppressed because either the observed number of injury events is very small and not appropriate for publication or the count can be used to calculate the number in a count that has been suppressed per state data policies.

Definitions for Injury Data Matrices

Motor vehicle non-traffic (MV non-traffic)—Includes motor vehicle crashes that occurred somewhere other than on a public roadway.

Motor vehicle traffic (MV traffic)—Includes crashes that occurred on a public roadway and involved at least one motor vehicle. All persons injured in MV traffic incidents are counted here. Pedal cyclists and pedestrians who were struck by a motor vehicle would be counted here, but those who crashed on a public roadway without involvement of a motor vehicle would be counted elsewhere (see “Pedal cyclist, other” definition).

Natural/Environmental—Includes causes related to nature and the environment (insect bites and stings, animal bites, extreme weather, excessive heat or cold, etc.).

Other land transport—Includes motor vehicle crashes that occurred somewhere other than on a public roadway, rail injuries, etc. Does not include air or water injuries.

Other specified—Includes a variety of relatively low-incidence causes of injury grouped together. Includes causes not elsewhere classified; an external cause of injury code that is intended for use when no other code exists to adequately describe the mechanism and manner of injury.

Pedal cyclist, other—Includes pedal cyclists who crashed on a public roadway without involvement of a motor vehicle.

Poisoning—Includes drug and non-drug poisonings, unless otherwise noted.

Self-harm/Suicide—Includes injuries resulting from behaviors deliberately trying to harm or injure oneself. Data for persons aged <10 years are not shown, as it is difficult to determine suicide intent among younger children.

Tie—Indicates a tied count for a leading cause of injury-related mortality or morbidity.

Unspecified—Includes injuries for which an external code of injury either (a) was not specified or (b) was specified but did not indicate the mechanism or manner of injury.

10 Leading Causes of Injury-Related Mortality by Age Group and Intent, 2021 Kentucky Residents

	Age Groups												
Rank	<1	1-4	5-9	10-14	15-19	20-24	25-34	35-44	45-54	55-64	65-74	75-84	85+
1	Suffocation 16	Drowning 7	Motor Vehicle Traffic 6	Motor Vehicle Traffic 9	Motor Vehicle Traffic 42	Poisoning 102	Poisoning 476	Poisoning 680	Poisoning 490	Poisoning 379	Poisoning 78	Fall 125	Fall 139
2		Motor Vehicle Traffic 0			Firearm 41	Motor Vehicle Traffic 64	Motor Vehicle Traffic 114	Motor Vehicle Traffic 36	Motor Vehicle Traffic 106	Motor Vehicle Traffic 99	Firearm 77	Unspecified 57	Unspecified 92
3					Poisoning 30	Firearm 55	Firearm 104	Firearm 86	Firearm 72	Firearm 68	Fall 76	Firearm 50	Motor Vehicle Traffic 22
4					Firearm 21	Firearm 52	Firearm 70	Firearm 55	Firearm 39	Fall 43	Motor Vehicle Traffic 67	Motor Vehicle Traffic 42	Suffocation 19
5					Suffocation 7	Suffocation 8	Suffocation 52	Suffocation 49	Suffocation 31	Tie* 19	Suffocation 34	Suffocation 19	Firearm 16
6							Tie* 9	Poisoning 15	Natural/ Environmental 11	Suffocation 17	Unspecified 25	Fire/Flame 17	Natural/ Environmental 9
7							Poisoning 8	Poisoning 12	Poisoning 10	Unspecified 16	Natural/ Environmental 22	Natural/ Environmental 14	Firearm 6
8								Natural/ Environmental 10	Tie* 8	Fire/Flame 15	Fire/Flame 14	Other Land Transport 7	
9								Cut/Pierce 8	Suffocation 7	Natural/ Environmental 14	Suffocation 11	Poisoning 6	
10								Tie* 6	Poisoning 6	Tie* 9	Firearm 9		

Injury Intent			
Unintentional	Suicide	Homicide	Undetermined

*Indicates a tied count for leading injury-related deaths. Counts less than or equal to five are not included in this matrix. Produced by the Kentucky Injury Prevention and Research Center, as bona fide agent for the Kentucky Department for Public Health. December 2022. This product was supported by grants numbers NU17CE010064 (Centers for Disease Control and Prevention) and 3048114413. Data source: Kentucky Death Certificate Database, Kentucky Office of Vital Statistics, Cabinet for Health and Family Services. Data are provisional and subject to change.

10 Leading Causes of Injury-Related Inpatient Hospitalizations by Age Group and Intent, 2021 Kentucky Residents

	Age Groups												
Rank	<1	1-4	5-9	10-14	15-19	20-24	25-34	35-44	45-54	55-64	65-74	75-84	85+
1	Child/Adult Abuse 34	Child/Adult Abuse 38	Motor Vehicle Traffic 35	Drug Poisoning 95	Drug Poisoning 218	Motor Vehicle Traffic 182	Motor Vehicle Traffic 412	Drug Poisoning 408	Fall 559	Fall 1,546	Fall 2,563	Fall 3,278	Fall 2,853
2	Fall 30	Tie* 36	Fall 28	Fall 42	Motor Vehicle Traffic 156	Drug Poisoning 133	Drug Poisoning 362	Motor Vehicle Traffic 406	Motor Vehicle Traffic 374	Motor Vehicle Traffic 383	Motor Vehicle Traffic 230	Motor Vehicle Traffic 164	Motor Vehicle Traffic 54
3	Unspecified 10	Tie* 13	Drug Poisoning 10	Motor Vehicle Traffic 36	Firearm 50	Drug Poisoning 82	Drug Poisoning 171	Fall 280	Drug Poisoning 345	Drug Poisoning 305	Drug Poisoning 189	Drug Poisoning 77	Struck by/Against 43
4	Tie* 5	Foreign Body 12	Bite/Sting 9	Motor Vehicle Non-Traffic 24	Drug Poisoning 45	Firearm 63	Fall 140	Drug Poisoning 203	Drug Poisoning 157	Drug Poisoning 137	Unspecified 85	Unspecified 68	Unspecified 42
5		Unspecified 8	Struck by/Against 8	Other Land Transport 13	Fall 41	Fall 48	Firearm 96	Firearm 57	Motor Vehicle Non-Traffic 40	Unspecified 64	Struck by/Against 75	Struck by/Against 67	Drug Poisoning 33
6		Tie* 6	Tie* 7	Struck by/Against 12	Motor Vehicle Non-Traffic 32	Firearm 32	Firearm 58	Struck by/Against 45	Tie* 38	Struck by/Against 50	Drug Poisoning 45	Drug Poisoning 18	Tie* 9
7			Foreign Body 6	Firearm 10	Tie* 19	Motor Vehicle Non-Traffic 29	Struck by/Against 45	Tie* 44	Unspecified 35	Motor Vehicle Non-Traffic 42	Natural/Environmental 23	Natural/Environmental 15	Overexertion 8
8			Tie* 5	Unspecified 9	Struck by/Against 10	Struck by/Against 16	Motor Vehicle Non-Traffic 43	Firearm 37	Firearm 32	Bite/Sting 30	Foreign Body 21	Motor Vehicle Non-Traffic 14	Suffocation 7
9				Tie* 8	Cut/Pierce 9	Tie* 10	Drug Poisoning 29	Struck by/Against 35	Bite/Sting 27	Tie* 26	Motor Vehicle Non-Traffic 20	Foreign Body 11	Tie* 5
10				Tie* 6	Tie* 7	Tie* 9	Unspecified 27	Cut/Pierce 31	Other Land Transport 23	Other Land Transport 24	Overexertion 19	Overexertion 10	

Injury Intent			
Unintentional	Self-Harm	Assault	Undetermined

*Indicates a tied count for leading injury-related inpatient hospitalizations. Counts represent encounters of care and could be greater than the number of individual patients treated at an acute care facility. Counts less than five are not included in this matrix. Produced by the Kentucky Injury Prevention and Research Center, as bona fide agent for the Kentucky Department for Public Health. December 2022. This product was supported by grants numbers NU17CE010064 (Centers for Disease Control and Prevention) and 3048114413. Data source: Kentucky Inpatient Hospitalization Claims. Data are provisional and subject to change.

10 Leading Causes of Injury-Related Emergency Department Visits by Age Group and Intent, 2021 Kentucky Residents

Age Groups													
Rank	<1	1-4	5-9	10-14	15-19	20-24	25-34	35-44	45-54	55-64	65-74	75-84	85+
1	Fall 1,862	Fall 9,499	Fall 7,396	Fall 6,534	Fall 4,987	Motor Vehicle Traffic 5,316	Fall 9,349	Fall 10,278	Fall 12,595	Fall 17,003	Fall 18,059	Fall 16,010	Fall 10,590
2	Unspecified 321	Struck by/Against 3,100	Struck by/Against 3,451	Struck by/Against 4,061	Motor Vehicle Traffic 4,800	Fall 4,590	Motor Vehicle Traffic 8,502	Motor Vehicle Traffic 6,715	Motor Vehicle Traffic 5,381	Motor Vehicle Traffic 4,597	Motor Vehicle Traffic 2,527	Unspecified 1,352	Unspecified 657
3	Struck by/Against 308	Unspecified 2,059	Bite/Sting 1,576	Overexertion 2,033	Struck by/Against 4,211	Struck by/Against 3,216	Struck by/Against 5,361	Unspecified 4,740	Unspecified 4,051	Unspecified 3,377	Unspecified 2,192	Struck by/Against 1,239	Struck by/Against 594
4	Motor Vehicle Traffic 191	Bite/Sting 1,696	Cut/Pierce 1,574	Unspecified 1,747	Overexertion 2,571	Cut/Pierce 2,629	Cut/Pierce 4,856	Struck by/Against 4,536	Struck by/Against 3,633	Struck by/Against 3,064	Struck by/Against 2,054	Motor Vehicle Traffic 1,086	Motor Vehicle Traffic 243
5	Foreign Body 119	Foreign Body 1,171	Unspecified 1,456	Cut/Pierce 1,731	Cut/Pierce 2,180	Overexertion 2,255	Unspecified 4,817	Overexertion 4,260	Overexertion 3,544	Cut/Pierce 2,618	Cut/Pierce 1,568	Cut/Pierce 631	Overexertion 198
6	Bite/Sting 114	Cut/Pierce 1,150	Motor Vehicle Traffic 1,283	Motor Vehicle Traffic 1,539	Unspecified 2,089	Unspecified 2,116	Overexertion 4,437	Cut/Pierce 4,148	Cut/Pierce 3,079	Overexertion 2,610	Overexertion 1,311	Overexertion 608	Cut/Pierce 182
7	Cut/Pierce 105	Motor Vehicle Traffic 795	Other Specified 634	Bite/Sting 995	Bite/Sting 963	Struck by/Against 1,164	Drug Poisoning 2,311	Drug Poisoning 2,337	Bite/Sting 1,896	Bite/Sting 1,575	Bite/Sting 1,003	Bite/Sting 434	Foreign Body 137
8	Child/Adult Abuse 91	Other Specified 646	Overexertion 626	Other Specified 600	Struck by/Against 863	Bite/Sting 1,135	Struck by/Against 2,320	Bite/Sting 2,153	Drug Poisoning 1,289	Drug Poisoning 891	Foreign Body 462	Foreign Body 269	Bite/Sting 113
9	Other Specified 81	Drug Poisoning 644	Foreign Body 586	Motor Vehicle Non-Traffic 539	Motor Vehicle Non-Traffic 709	Other Specified 737	Bite/Sting 2,243	Struck by/Against 1,853	Struck by/Against 1,210	Struck by/Against 741	Drug Poisoning 377	Drug Poisoning 191	Drug Poisoning 66
10	Drug Poisoning 65	Overexertion 588	Pedal Cyclist, Other 353	Other Land Transport 486	Other Specified 698	Drug Poisoning 692	Other Specified 1,271	Other Specified 1,003	Other Specified 814	Other Specified 588	Other Specified 334	Tie* 154	Other Specified 53

Injury Intent			
Unintentional	Self-Harm	Assault	Undetermined

*Indicates a tied count for leading injury-related emergency department visits. Counts represent encounters of care and could be greater than the number of individual patients treated. Counts less than five are not included in this matrix. Produced by the Kentucky Injury Prevention and Research Center, as bona fide agent for the Kentucky Department for Public Health, December 2022. This product was supported by grants numbers NU17CE010064 (Centers for Disease Control and Prevention) and 3048114413. Data source: Kentucky Outpatient Services Database, Office of Health Data and Analytics. Data are provisional and subject to change.

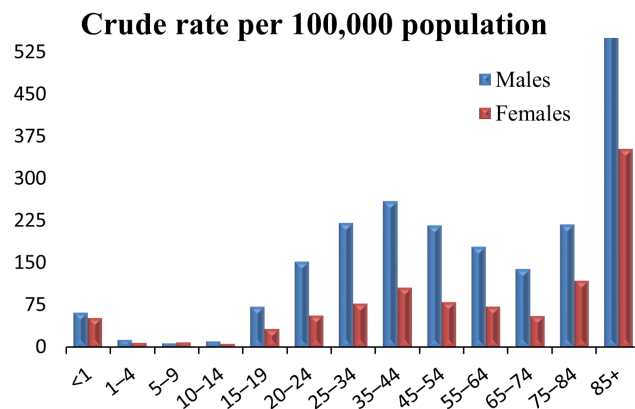
All Injuries by Age and Sex

Mortality

Total: 5,204 (115.1)[^]

Males: 3,604 (163.6)

Females: 1,600 (68.0)



Counts

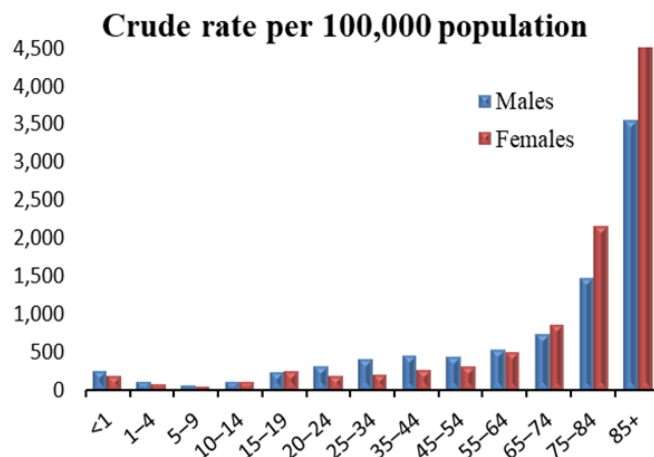
Age	Males	Females
<1	16	13
1-4	15	9
5-9	11	13
10-14	17	9
15-19	110	47
20-24	235	82
25-34	665	226
35-44	736	298
45-54	606	225
55-64	523	222
65-74	314	140
75-84	211	147
85+	145	169

Inpatient Hospitalizations

Total: 22,393 (453.7)

Males: 10,478 (461.6)

Females: 11,915 (434.2)



Counts

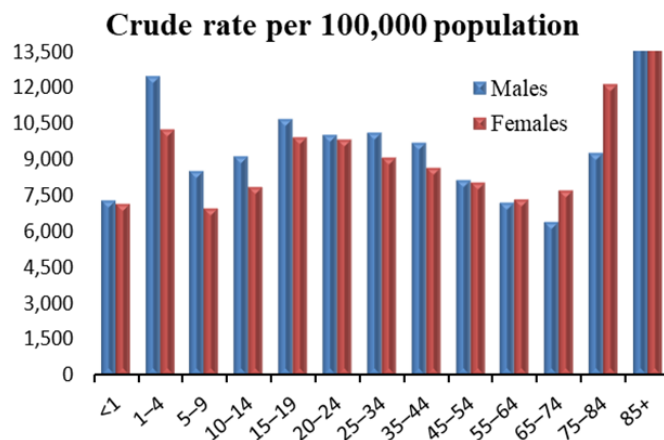
Age	Males	Females
<1	62	45
1-4	110	82
5-9	85	68
10-14	166	160
15-19	360	344
20-24	473	272
25-34	1,196	580
35-44	1,289	723
45-54	1,217	882
55-64	1,562	1,545
65-74	1,636	2,180
75-84	1,414	2,675
85+	908	2,359

Emergency Department Visits

Total: 404,182 (9,107.9)

Males: 202,442 (9,297.4)

Females: 201,740 (8,864.5)



Counts

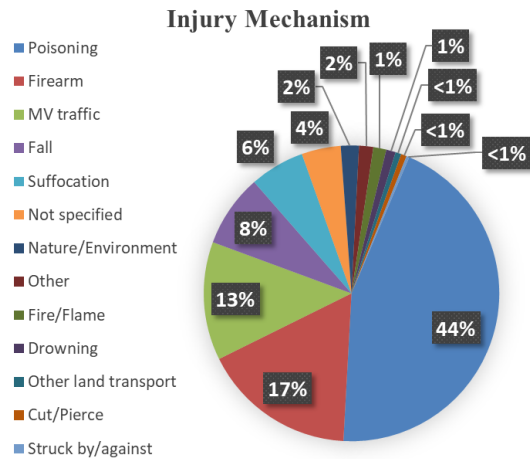
Age	Males	Females
<1	1,879	1,771
1-4	13,735	10,787
5-9	12,318	9,499
10-14	13,754	11,215
15-19	16,141	14,265
20-24	15,477	14,289
25-34	30,373	26,312
35-44	27,386	24,385
45-54	22,859	22,437
55-64	21,035	22,533
65-74	14,394	19,509
75-84	8,970	15,089
85+	4,121	9,649

[^]Age-adjusted rate per 100,000 population
Rates based on counts of 20 or less may be unstable.



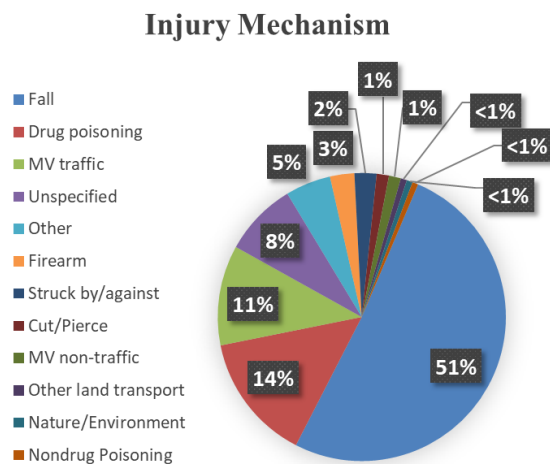
All Injuries by Injury Mechanism

Mortality



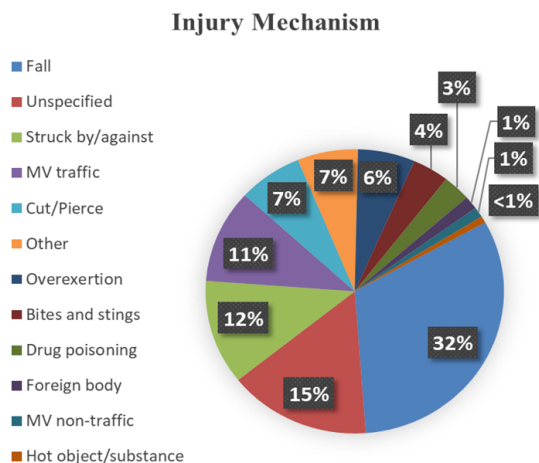
Injury Mechanism	Count
Poisoning	2,315
Firearm	875
MV traffic	673
Fall	413
Suffocation	312
Not specified	223
Nature/Environment	103
Other	81
Fire/Flame	74
Drowning	54
Other land transport	33
Cut/Pierce	32
Struck by/against	16

Inpatient Hospitalizations



Injury Mechanism	Count
Fall	11,457
Drug poisoning	3,199
MV traffic	2,517
Unspecified	1,854
Other	1,140
Firearm	613
Struck by/against	553
Cut/Pierce	309
MV non-traffic	299
Other land transport	157
Nature/Environment	149
Nondrug Poisoning	146

Emergency Department Visits



Injury Mechanism	Count
Fall	128,825
Unspecified	62,521
Struck by/against	48,077
MV traffic	43,023
Cut/Pierce	28,111
Other	26,542
Overexertion	25,081
Bites and stings	15,985
Drug poisoning	12,193
Foreign body	6,042
MV non-traffic	4,696
Hot object/substance	3,086

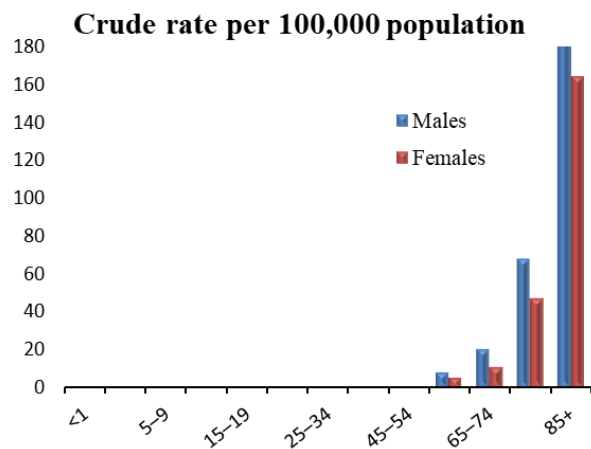
Unintentional Falls by Age and Sex

Mortality

Total: 403 (7.7)[^]

Males: 211 (9.5)

Females: 192 (6.3)



Counts

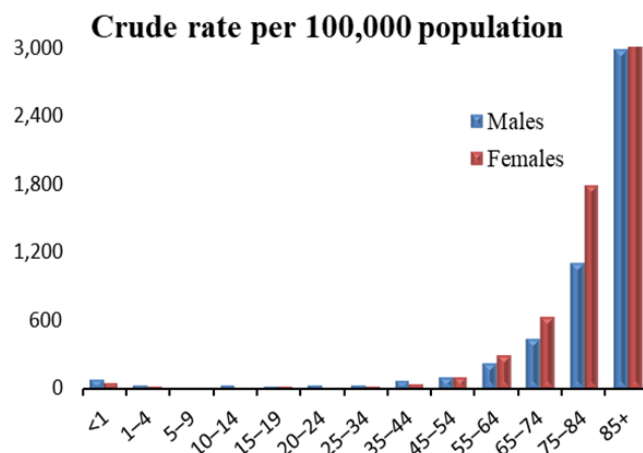
Age	Males	Females
<1	0	0
1-4	0	0
5-9	0	0
10-14	0	0
15-19	0	0
20-24	0	*
25-34	*	0
35-44	*	*
45-54	*	*
55-64	25	18
65-74	47	29
75-84	66	59
85+	60	79

Inpatient Hospitalization

Total: 11,444 (215.3)

Males: 4,148 (178.7)

Females 7,296 (240.4)



Counts

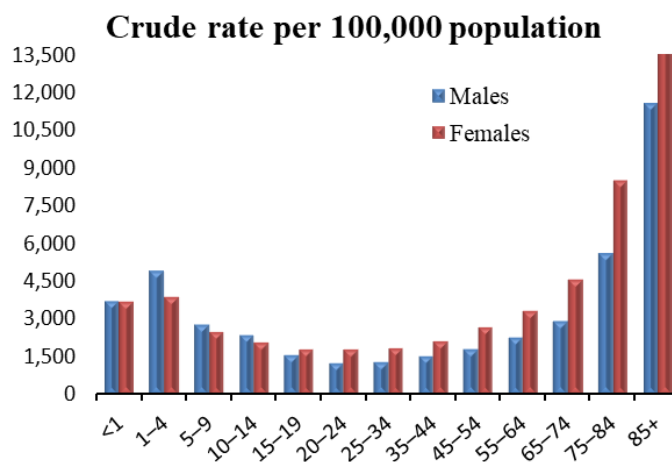
Age	Males	Females
<1	19	11
1-4	23	13
5-9	14	14
10-14	34	8
15-19	25	16
20-24	37	11
25-34	82	58
35-44	181	99
45-54	279	280
55-64	645	901
65-74	985	1,578
75-84	1,060	2,218
85+	764	2,089

Emergency Department Visits

Total: 128,748 (2,738.3)

Males: 53,240 (2,394.0)

Females: 75,508 (3,037.4)



Counts

Age	Males	Females
<1	949	913
1-4	5,425	4,074
5-9	3,992	3,404
10-14	3,568	2,966
15-19	2,411	2,576
20-24	1,937	2,653
25-34	3,954	5,394
35-44	4,306	5,972
45-54	5,118	7,477
55-64	6,689	10,313
65-74	6,541	11,516
75-84	5,386	10,624
85+	2,964	7,626

[^]Age-adjusted rate per 100,000 population

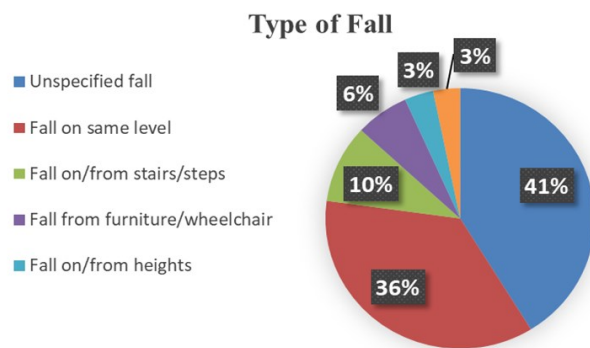
*Suppressed per state data policies

Rates based on counts of 20 or less may be unstable.



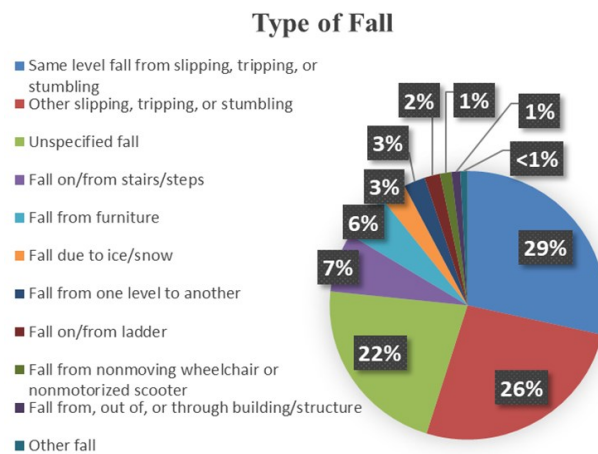
Unintentional Falls by Type of Fall

Mortality



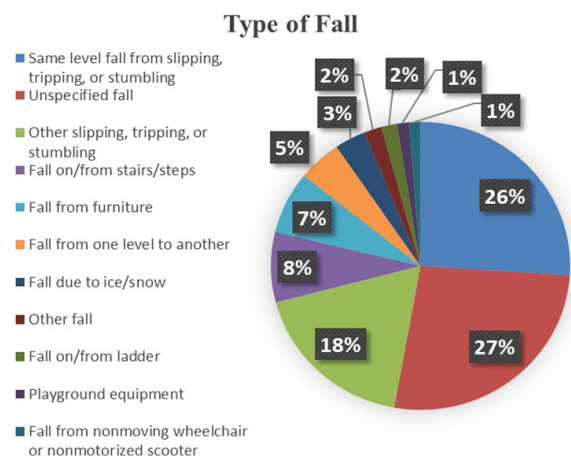
Type of Fall	Count
Unspecified fall	166
Fall on same level	145
Fall on/from stairs/steps	39
Fall from furniture/wheelchair	26
Fall on/from heights	14
Other fall from one level to another	13

Inpatient Hospitalizations



Type of Fall	Count
Same level fall from slipping, tripping, or stumbling	3,264
Other slipping, tripping, or stumbling	3,009
Unspecified fall	2,500
Fall on/from stairs/steps	817
Fall from furniture	646
Fall due to ice/snow	342
Fall from one level to another	288
Fall on/from ladder	209
Fall from nonmoving wheelchair or nonmotorized scooter	154
Fall from, out of, or through building/structure	118
Other fall	97

Emergency Department Visits



Type of Fall	Count
Same level fall from slipping, tripping, or stumbling	33,518
Unspecified fall	34,481
Other slipping, tripping, or stumbling	23,303
Fall on/from stairs/steps	10,156
Fall from furniture	8,994
Fall from one level to another	6,076
Fall due to ice/snow	4,328
Other fall	2,465
Fall on/from ladder	2,178
Playground equipment	1,672
Fall from nonmoving wheelchair or nonmotorized scooter	1,577

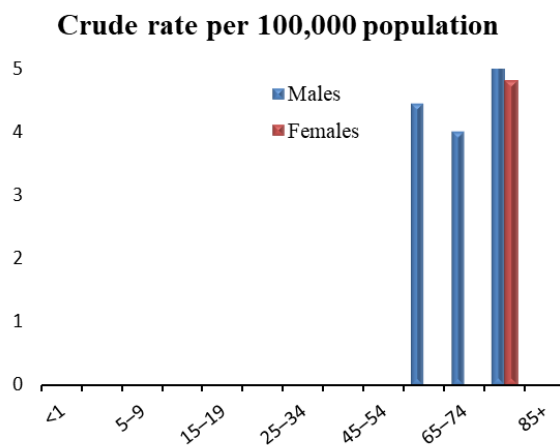
Unintentional Fire-Related Injuries by Age and Sex

Mortality

Total: 72 (1.4)[^]

Males: 50 (2.1)

Females: 22 (0.8)



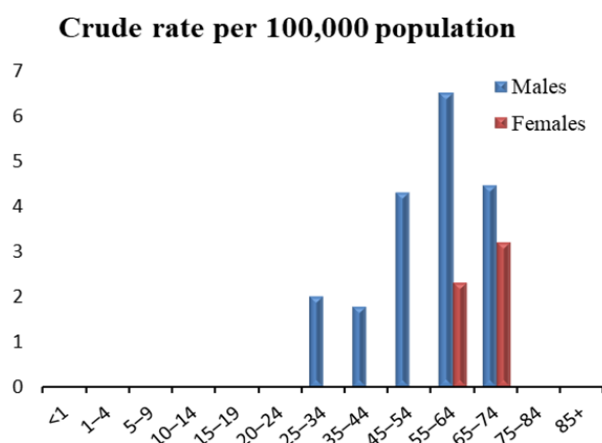
Age	Males	Females
<1	0	0
1-4	*	0
5-9	*	*
10-14	0	0
15-19	0	0
20-24	0	*
25-34	*	*
35-44	*	*
45-54	*	0
55-64	13	*
65-74	9	*
75-84	11	6
85+	*	*

Inpatient Hospitalizations

Total: 94 (1.8)

Males: 66 (2.7)

Females: 28 (1.0)



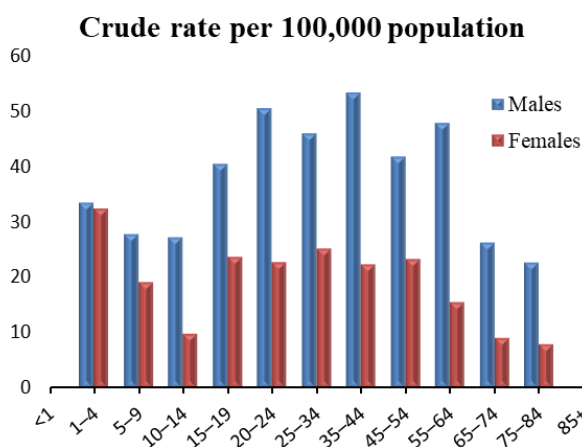
Age	Males	Females
<1	0	0
1-4	0	0
5-9	*	0
10-14	0	0
15-19	*	*
20-24	*	0
25-34	6	*
35-44	5	*
45-54	12	*
55-64	19	7
65-74	10	8
75-84	*	*
85+	*	*

Emergency Department Visits

Total: 1,325 (30.1)

Males: 892 (40.2)

Females: 433 (20.1)



Age	Males	Females
<1	*	##
1-4	37	34
5-9	40	26
10-14	41	14
15-19	61	34
20-24	78	33
25-34	138	73
35-44	151	63
45-54	117	65
55-64	140	48
65-74	59	23
75-84	22	10
85+	##	*

[^]Age-adjusted rate per 100,000 population

*Suppressed per state data policies

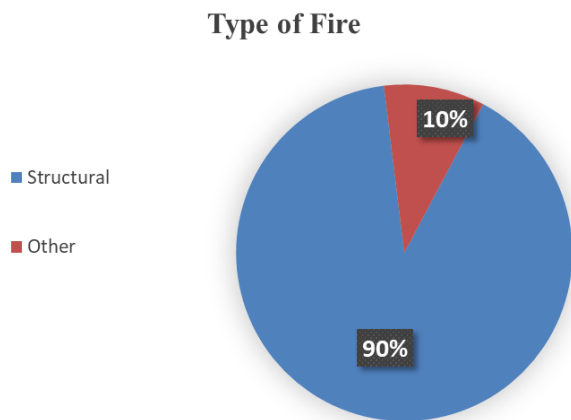
Rates based on counts of 20 or less may be unstable.

##Suppressed to prevent indirect disclosure



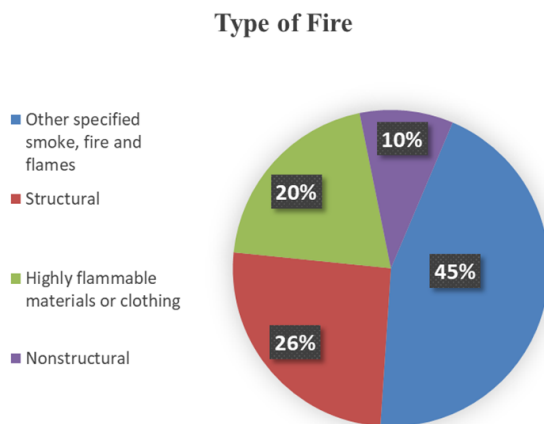
Unintentional Fire-Related Injuries by Type of Fire

Mortality



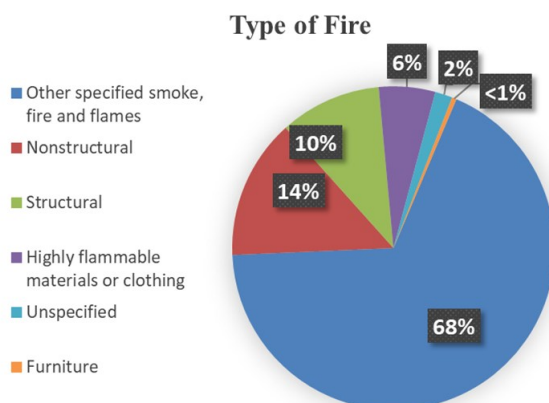
Type of Fire	Count
Structural	65
Other	7

Inpatient Hospitalizations



Type of Fire	Count
Other specified smoke, fire and flames	42
Structural	24
Highly flammable materials or clothing	19
Nonstructural	9

Emergency Department Visits



Type of Fire	Count
Other specified smoke, fire and flames	900
Nonstructural	186
Structural	135
Highly flammable materials or clothing	75
Unspecified	23
Furniture	6

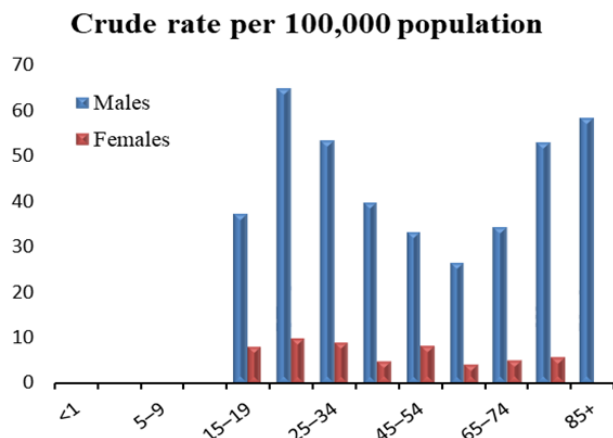
Firearm-Related Injuries by Age and Sex

Mortality

Total: 875 (19.3)[^]

Males: 753 (33.6)

Females: 122 (5.4)



Age	Males	Females
<1	0	0
1-4	0	0
5-9	*	*
10-14	##	*
15-19	56	11
20-24	100	14
25-34	160	25
35-44	112	13
45-54	93	22
55-64	77	12
65-74	77	12
75-84	51	7
85+	15	*

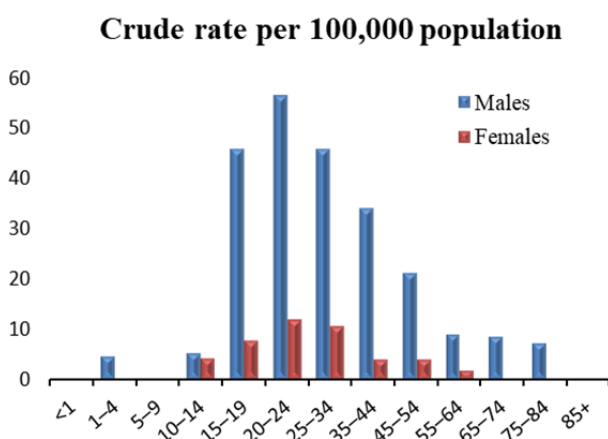
Counts

Inpatient Hospitalizations

Total: 613 (14.4)

Males: 516 (24.1)

Females: 97 (4.6)



Age	Males	Females
<1	0	*
1-4	5	0
5-9	*	*
10-14	8	6
15-19	69	11
20-24	87	17
25-34	137	30
35-44	96	11
45-54	59	11
55-64	26	5
65-74	19	*
75-84	7	*
85+	*	0

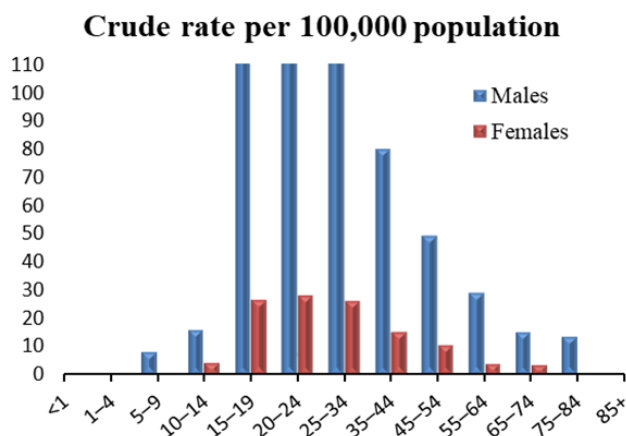
Counts

Emergency Department Visits

Total: 1,630 (38.4)

Males: 1,368 (63.7)

Females: 262 (12.5)



Age	Males	Females
<1	*	0
1-4	*	*
5-9	12	*
10-14	24	6
15-19	230	38
20-24	225	41
25-34	373	76
35-44	226	43
45-54	138	30
55-64	85	12
65-74	34	9
75-84	13	*
85+	*	*

Counts

[^]Age-adjusted rate per 100,000 population

*Suppressed per state data policies

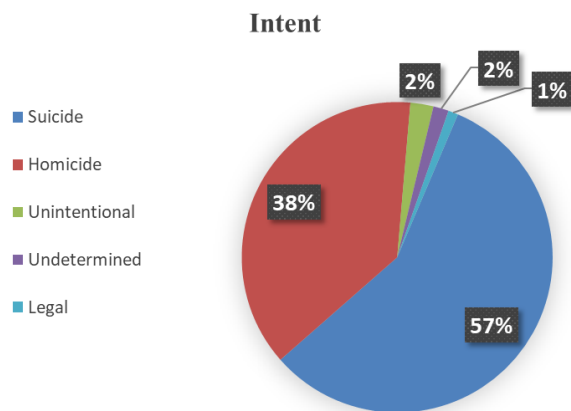
Rates based on counts of 20 or less may be unstable.

##Suppressed to prevent indirect disclosure



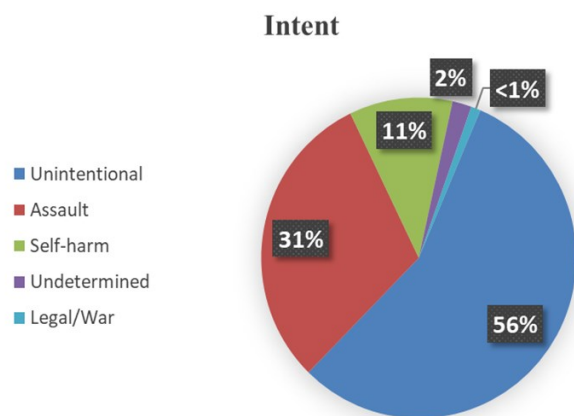
Firearm-Related Injuries by Intent

Mortality



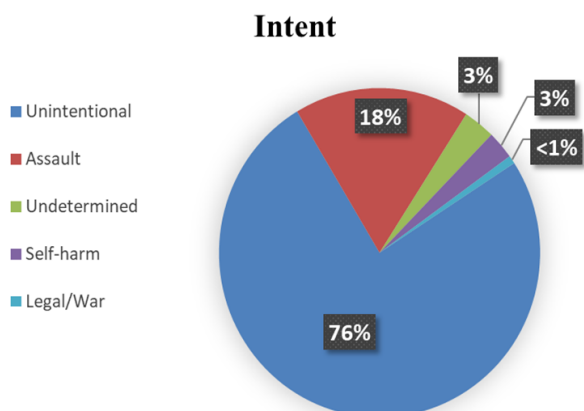
Intent	Count
Suicide	500
Homicide	331
Unintentional	21
Undetermined	14
Legal	9

Inpatient Hospitalizations



Intent	Count
Unintentional	343
Assault	187
Self-harm	65
Undetermined	12
Legal/War	6

Emergency Department Visits



Intent	Count
Unintentional	1,232
Assault	288
Undetermined	52
Self-harm	45
Legal/War	13

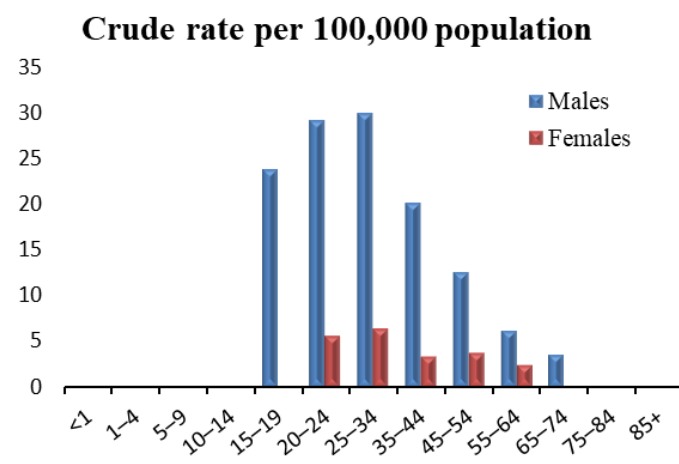
Homicide and Assault by Age and Sex

Mortality

Total: 372 (8.7)[^]

Males: 301 (14.1)

Females: 71 (3.2)



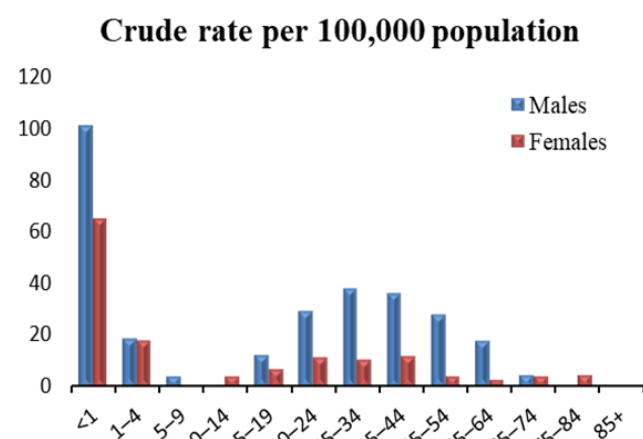
Age	Males	Females
<1	*	*
1-4	*	0
5-9	*	*
10-14	*	*
15-19	36	*
20-24	45	8
25-34	90	18
35-44	57	9
45-54	35	10
55-64	18	7
65-74	8	*
75-84	*	*
85+	0	0

Inpatient Hospitalizations

Total: 655 (15.6)

Males: 479 (22.5)

Females: 176 (8.5)



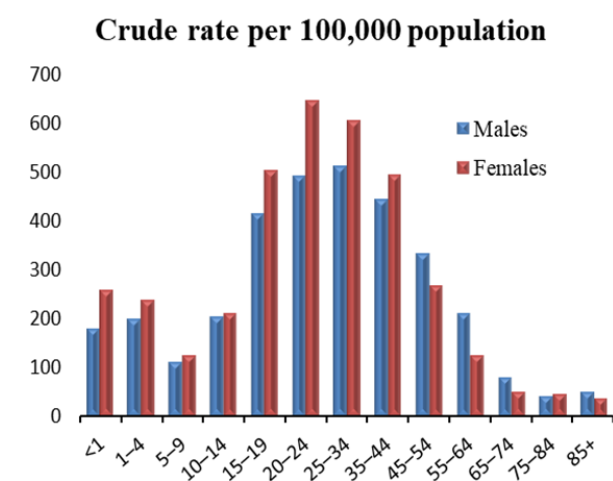
Age	Males	Females
<1	26	16
1-4	21	19
5-9	6	*
10-14	*	6
15-19	19	10
20-24	45	17
25-34	114	31
35-44	102	33
45-54	78	12
55-64	52	9
65-74	10	11
75-84	*	6
85+	0	*

Emergency Department Visits

Total: 13,625 (324.3)

Males: 6,694 (312.8)

Females: 6,931 (336.9)



Age	Males	Females
<1	46	64
1-4	221	250
5-9	161	171
10-14	306	302
15-19	625	724
20-24	758	941
25-34	1,543	1,756
35-44	1,260	1,393
45-54	932	748
55-64	614	382
65-74	176	126
75-84	39	57
85+	13	17

[^]Age-adjusted rate per 100,000 population

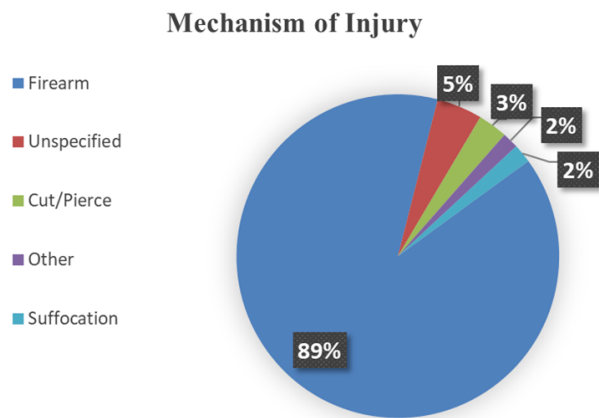
*Suppressed per state data policies

Rates based on counts of 20 or less may be unstable.



Homicide and Assault by Mechanism of Injury

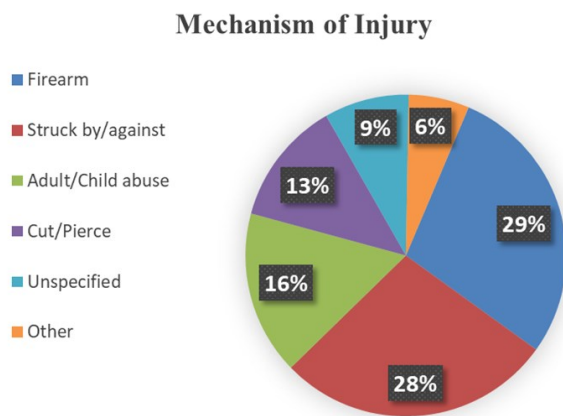
Mortality



Mechanism of Injury	Count
Firearm	331
Cut/Pierce	17
Unspecified	11
Other	6
Suffocation	7

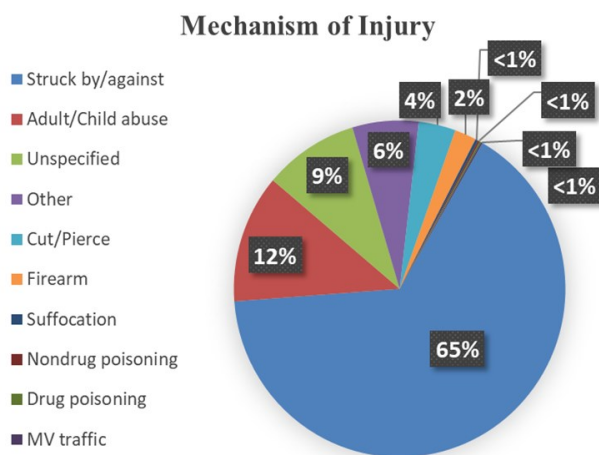
Percentages may add up to more than 100% due to rounding.

Inpatient Hospitalizations



Mechanism of Injury	Count
Firearm	187
Struck by/against	182
Adult/Child abuse	108
Cut/Pierce	82
Unspecified	56
Other	40

Emergency Department Visits



Mechanism of Injury	Count
Struck by/against	8,921
Adult/Child abuse	1,682
Unspecified	1,260
Other	879
Cut/Pierce	492
Firearm	288
Suffocation	38
Nondrug poisoning	22
Drug poisoning	22
MV traffic	21

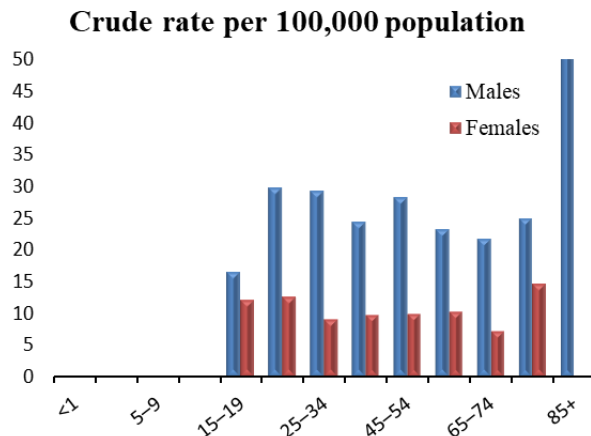
Unintentional MV Traffic Crashes by Age and Sex

Mortality

Total: 673 (14.6)[^]

Males: 476 (21.1)

Females: 197 (8.5)



Counts

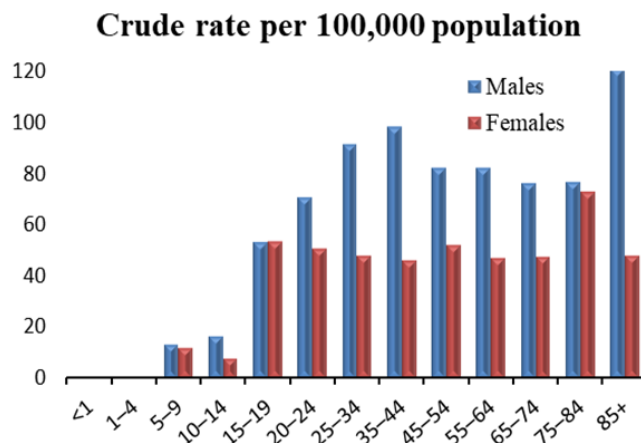
Age	Males	Females
<1	0	0
1-4	*	*
5-9	*	*
10-14	*	*
15-19	25	17
20-24	46	18
25-34	88	26
35-44	69	27
45-54	79	27
55-64	68	31
65-74	49	18
75-84	24	18
85+	17	*

Inpatient Hospitalizations

Total: 2,509 (54.5)

Males: 1,538 (68.1)

Females: 971 (41.2)



Counts

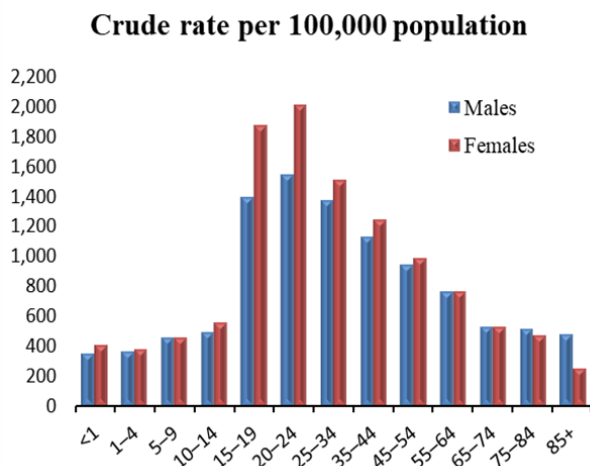
Age	Males	Females
<1	*	*
1-4	##	##
5-9	19	16
10-14	25	11
15-19	80	76
20-24	109	73
25-34	274	138
35-44	277	129
45-54	229	145
55-64	240	143
65-74	171	119
75-84	74	90
85+	31	23

Emergency Department Visits

Total: 42,974 (982.4)

Males: 20,416 (930.0)

Females: 22,558 (1,038.3)



Counts

Age	Males	Females
<1	90	101
1-4	400	395
5-9	662	621
10-14	742	797
15-19	2,110	2,690
20-24	2,387	2,929
25-34	4,129	4,372
35-44	3,208	3,507
45-54	2,632	2,749
55-64	2,247	2,350
65-74	1,188	1,339
75-84	498	588
85+	123	120

[^]Age-adjusted rate per 100,000 population

*Suppressed per state data policies

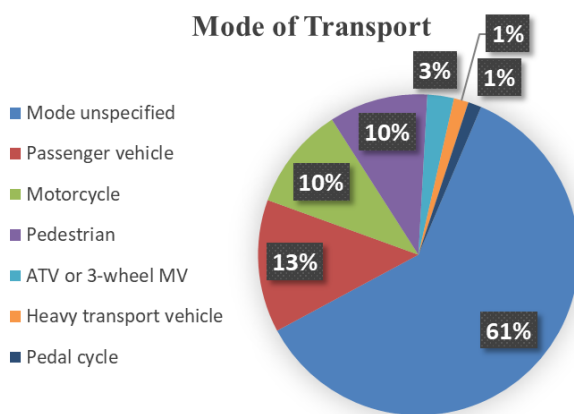
Rates based on counts of 20 or less may be unstable.

##Suppressed to prevent indirect disclosure



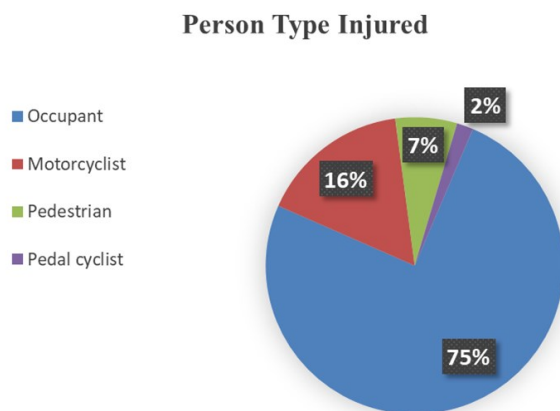
Unintentional MV Traffic Crashes by Mode of Transport

Mortality



Mode of Transport	Count
Mode unspecified	409
Passenger vehicle	90
Motorcycle	70
Pedestrian	67
ATV or 3-wheel MV	18
Heavy transport vehicle	10
Pedal cycle	9

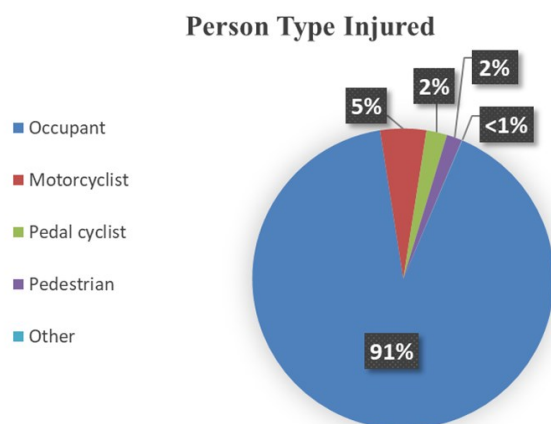
Inpatient Hospitalizations



Person Type Injured	Count
Occupant	1,887
Motorcyclist	409
Pedestrian	168
Pedal cyclist	45

Note: "Other" includes inpatient hospitalizations due to injuries related to persons boarding and alighting and unspecified occupants of a motor vehicle.

Emergency Department Visits



Person Type Injured	Count
Occupant	39,168
Motorcyclist	2,119
Pedal cyclist	956
Pedestrian	713
Other	18

Note: "Other" includes emergency department visits due to injuries related to persons boarding and alighting and unspecified occupants of a motor vehicle.

Nondrug Poisoning by Age and Sex

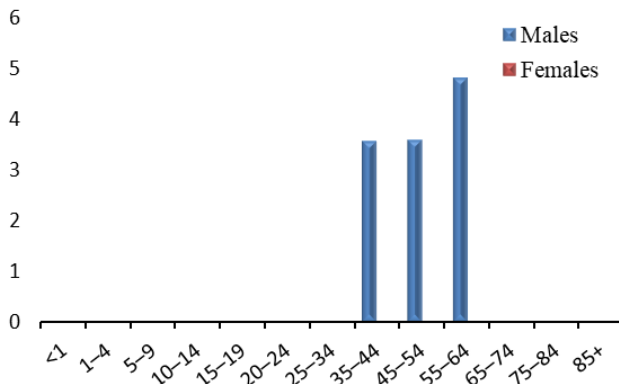
Mortality

Total: 58 (1.2)[^]

Males: 44 (1.9)

Females: 14 (0.5)

Crude rate per 100,000 population



Counts

Age	Males	Females
<1	0	0
1-4	0	0
5-9	0	0
10-14	0	0
15-19	*	0
20-24	*	0
25-34	*	*
35-44	10	*
45-54	10	*
55-64	14	*
65-74	*	*
75-84	0	*
85+	0	*

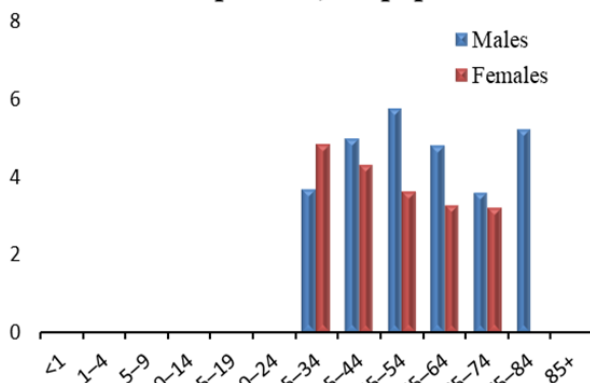
Inpatient Hospitalizations

Total: 146 (3.2)

Males: 80 (3.6)

Females: 66 (2.8)

Crude rate per 100,000 population



Counts

Age	Males	Females
<1	0	0
1-4	0	0
5-9	0	*
10-14	*	*
15-19	*	*
20-24	*	*
25-34	11	14
35-44	14	12
45-54	16	10
55-64	14	10
65-74	8	8
75-84	5	*
85+	*	*

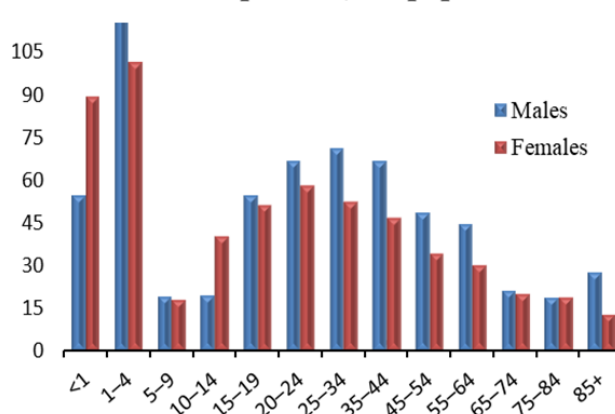
Emergency Department Visits

Total: 2,045 (47.5)

Males: 1,133 (52.5)

Females: 912 (42.7)

Crude rate per 100,000 population



Counts

Age	Males	Females
<1	14	22
1-4	139	106
5-9	27	24
10-14	29	57
15-19	82	73
20-24	103	84
25-34	213	151
35-44	188	130
45-54	136	94
55-64	130	92
65-74	47	50
75-84	18	23
85+	7	6

[^]Age-adjusted rate per 100,000 population

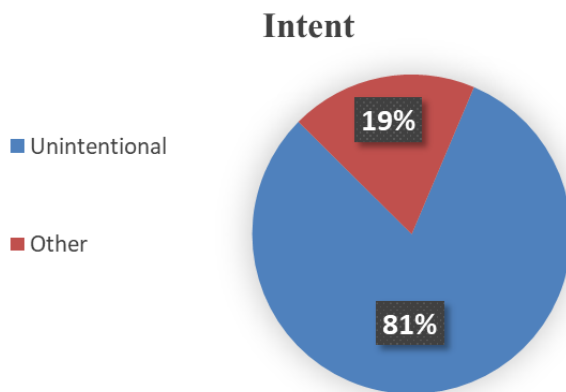
*Suppressed per state data policies

Rates based on counts of 20 or less may be unstable.



Nondrug Poisoning by Intent

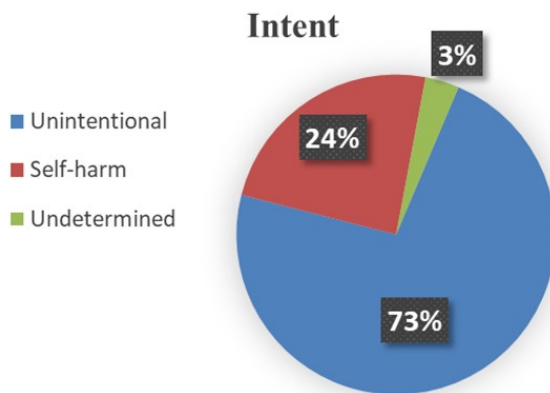
Mortality



Intent	Count
Unintentional	47
Other	11

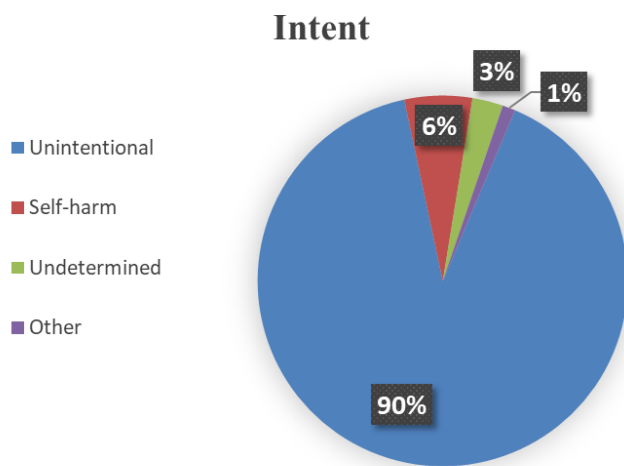
Note: "Other" includes mortalities due to undetermined and intentional intents.

Inpatient Hospitalizations



Intent	Count
Unintentional	106
Self-harm	35
Undetermined	5

Emergency Department Visits



Intent	Count
Unintentional	1,846
Self-harm	121
Undetermined	55
Other	23

Note: "Other" includes emergency department visits due to assault and legal/war intents.

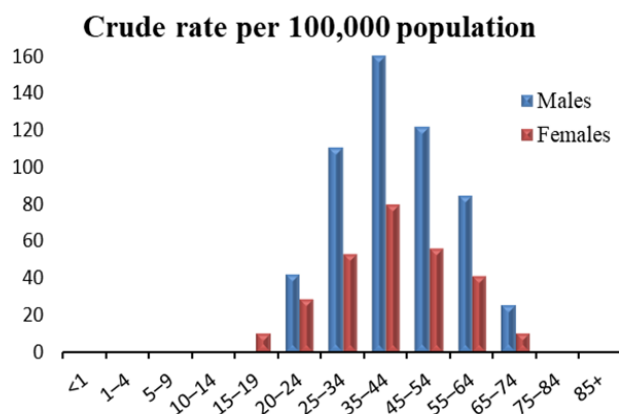
Drug Poisoning by Age and Sex

Mortality

Total: 2,257 (52.5)[^]

Males: 1,517 (70.5)

Females: 740 (34.5)



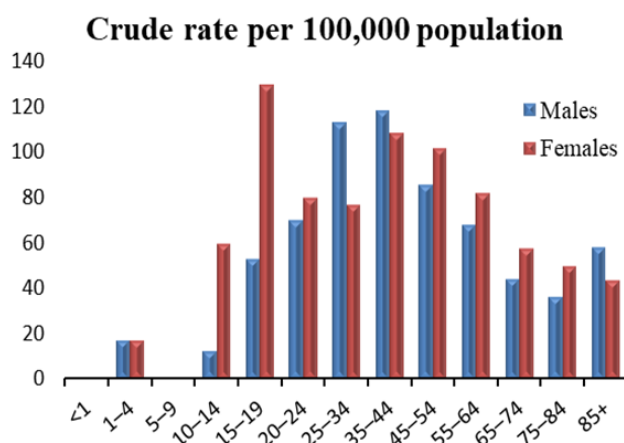
Age	Males	Females
<1	*	0
1-4	*	*
5-9	0	0
10-14	0	0
15-19	##	14
20-24	65	41
25-34	332	153
35-44	453	222
45-54	340	155
55-64	247	125
65-74	57	25
75-84	*	*
85+	*	0

Inpatient Hospitalizations

Total: 3,199 (72.2)

Males: 1,495 (68.3)

Females: 1,704 (76.1)



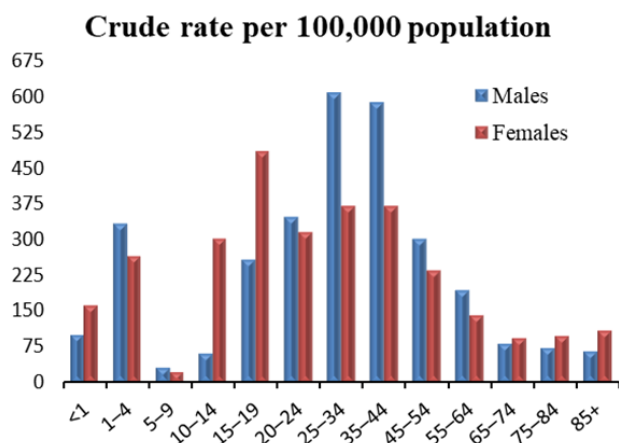
Age	Males	Females
<1	*	*
1-4	19	18
5-9	*	##
10-14	19	85
15-19	80	186
20-24	108	116
25-34	339	223
35-44	335	304
45-54	240	284
55-64	199	252
65-74	100	145
75-84	35	62
85+	15	21

Emergency Department Visits

Total: 12,193 (289.4)

Males: 6,633 (314.5)

Females: 5,560 (264.2)



Age	Males	Females
<1	26	40
1-4	369	279
5-9	45	30
10-14	92	430
15-19	391	694
20-24	535	460
25-34	1,829	1,077
35-44	1,662	1,045
45-54	842	656
55-64	569	434
65-74	185	239
75-84	71	123
85+	17	53

[^]Age-adjusted rate per 100,000 population

*Suppressed per state data policies

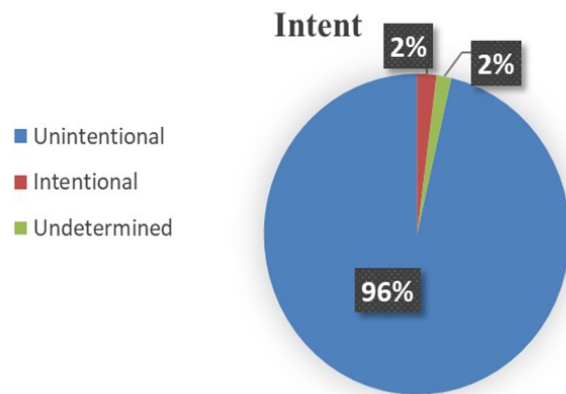
Rates based on counts of 20 or less may be unstable.

##Suppressed to prevent indirect disclosure



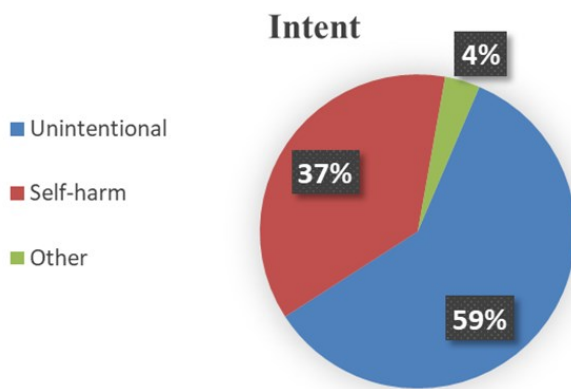
Drug Poisoning by Intent

Mortality



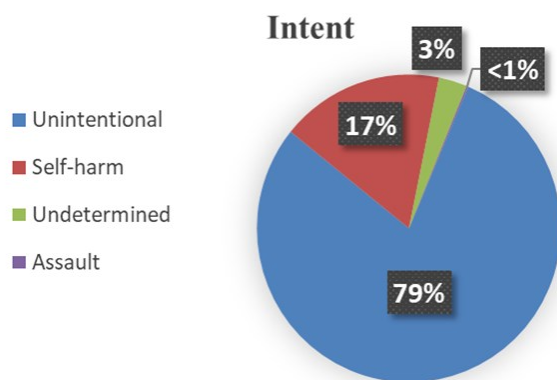
Intent	Count
Unintentional	2,175
Intentional	47
Undetermined	35

Inpatient Hospitalizations



Intent	Count
Unintentional	1,901
Self-harm	1,180
Other	115

Emergency Department Visits



Intent	Count
Unintentional	9,684
Self-harm	2,117
Undetermined	370
Assault	22

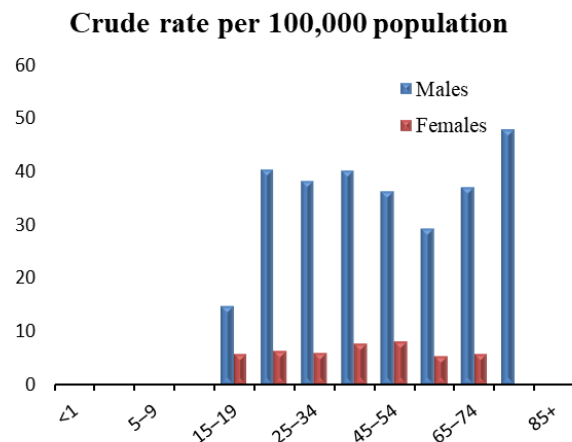
Suicide and Self-Harm Injury by Age and Sex

Mortality¹

Total: 762 (16.6)[^]

Males: 646 (28.6)

Females: 116 (5.1)



Counts

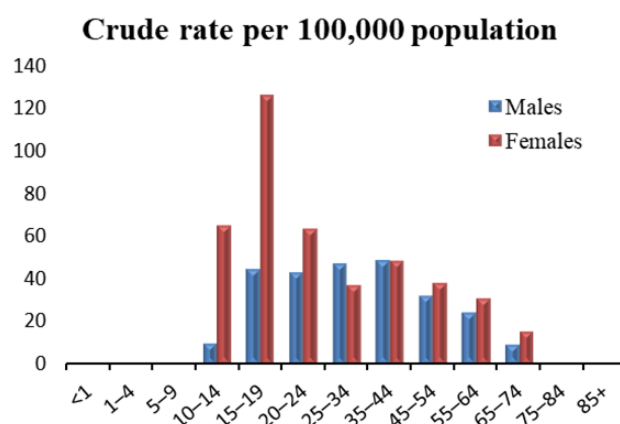
Age	Males	Females
<1		
1-4		
5-9		
10-14	*	*
15-19	22	8
20-24	62	9
25-34	114	17
35-44	113	21
45-54	101	22
55-64	85	16
65-74	83	14
75-84	46	*
85+	##	*

Inpatient Hospitalizations¹

Total: 1,491 (34.6)

Males: 623 (28.9)

Females: 868 (40.6)



Counts

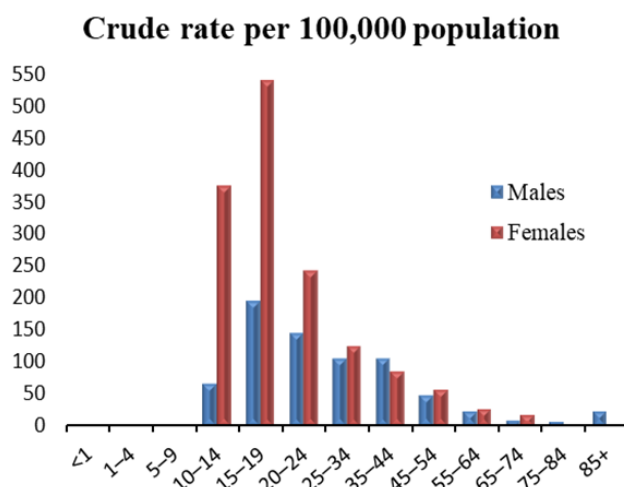
Age	Males	Females
<1		
1-4		
5-9		
10-14	15	93
15-19	67	181
20-24	66	93
25-34	142	108
35-44	138	137
45-54	90	107
55-64	71	95
65-74	21	40
75-84	##	##
85+	*	*

Emergency Department Visits¹

Total: 4,039 (97.0)

Males: 1,464 (69.7)

Females: 2,575 (125.7)



Counts

Age	Males	Females
<1		
1-4		
5-9		
10-14	100	537
15-19	294	773
20-24	223	355
25-34	315	363
35-44	298	242
45-54	134	161
55-64	68	85
65-74	19	44
75-84	7	##
85+	6	*

[^]Age-adjusted rate per 100,000 population

*Suppressed per state data policies

Rates based on counts of 20 or less may be unstable.

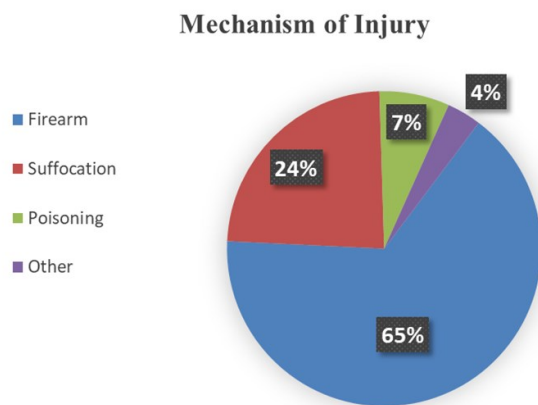
¹Data for persons aged <10 years are not shown.

##Suppressed to prevent indirect disclosure



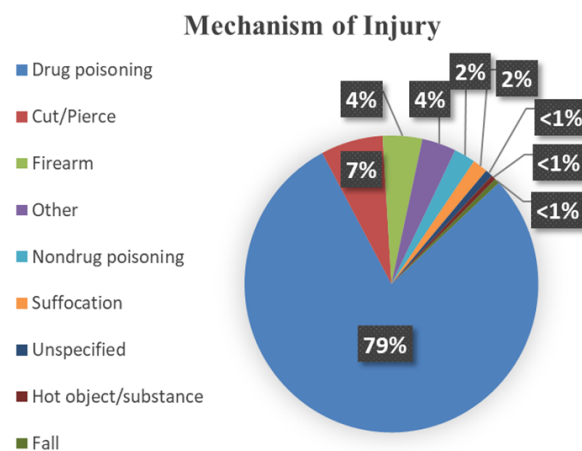
Suicide and Self-Harm Injury by Mechanism of Injury

Mortality



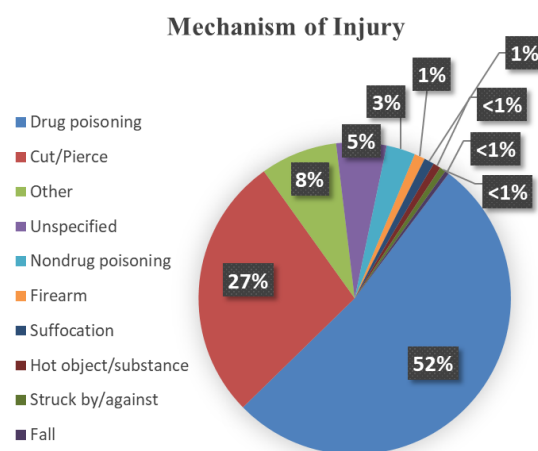
Mechanism of Injury	Count
Firearm	499
Suffocation	181
Poisoning	55
Other	27

Inpatient Hospitalizations



Mechanism of Injury	Count
Drug poisoning	1,180
Cut/Pierce	102
Firearm	65
Other	56
Nondrug poisoning	35
Suffocation	25
Unspecified	12
Hot object/substance	8
Fall	8

Emergency Department Visits



Mechanism of Injury	Count
Drug poisoning	2,117
Cut/Pierce	1,108
Other	322
Unspecified	210
Nondrug poisoning	121
Firearm	45
Suffocation	42
Hot object/substance	32
Struck by/against	25
Fall	17

Traumatic Brain Injury by Age and Sex

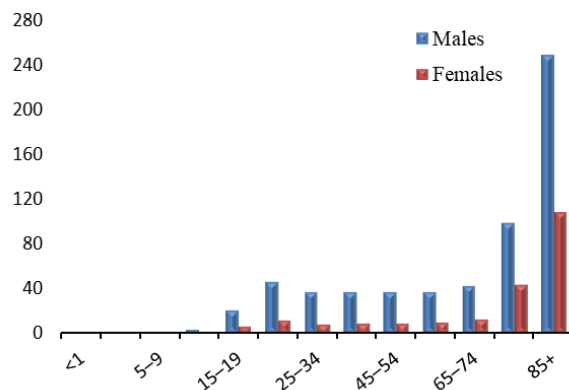
Mortality

Total: 1,086 (23.0)[^]

Males: 807 (36.1)

Females: 279 (10.9)

Crude rate per 100,000 population



Counts

Age	Males	Females
<1	*	*
1-4	*	*
5-9	*	*
10-14	6	*
15-19	32	9
20-24	72	17
25-34	113	25
35-44	106	25
45-54	104	26
55-64	108	31
65-74	97	33
75-84	96	54
85+	64	52

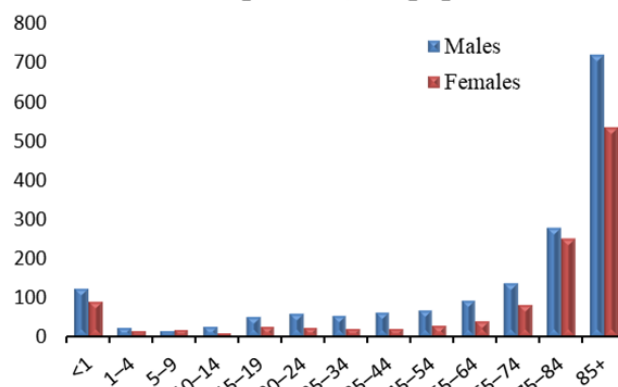
Inpatient Hospitalizations

Total: 3,015 (61.3)

Males: 1,809 (79.4)

Females: 1,206 (44.4)

Crude rate per 100,000 population



Counts

Age	Males	Females
<1	31	22
1-4	24	14
5-9	18	21
10-14	37	13
15-19	73	37
20-24	88	30
25-34	158	52
35-44	173	55
45-54	184	73
55-64	269	120
65-74	304	204
75-84	266	309
85+	184	256

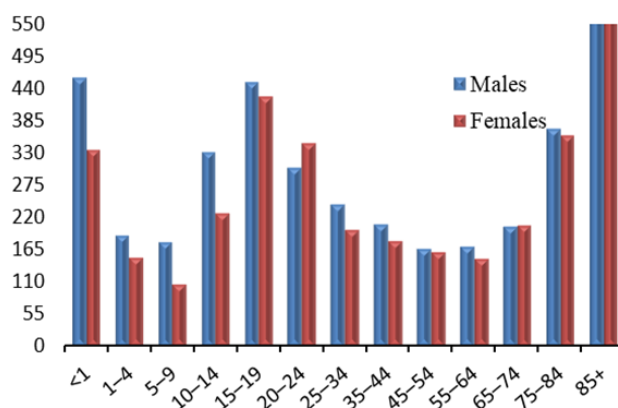
Emergency Department Visits

Total: 10,573 (236.6)

Males: 5,493 (251.1)

Females: 5,080 (221.8)

Crude rate per 100,000 population



Counts

Age	Males	Females
<1	118	83
1-4	208	159
5-9	257	146
10-14	499	324
15-19	681	612
20-24	470	505
25-34	729	577
35-44	589	506
45-54	464	449
55-64	501	460
65-74	459	521
75-84	359	447
85+	159	291

[^]Age-adjusted rate per 100,000 population

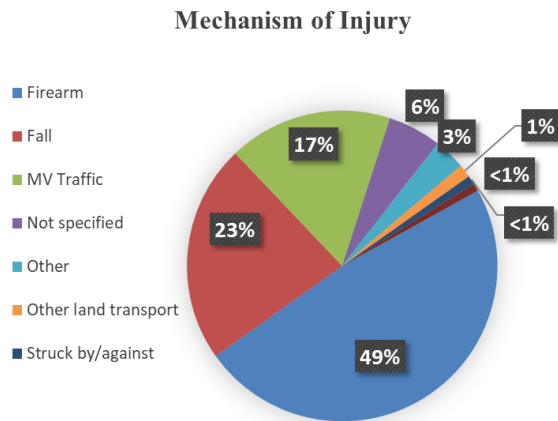
*Suppressed per state data policies

Rates based on counts of 20 or less may be unstable.



Traumatic Brain Injury by Mechanism of Injury

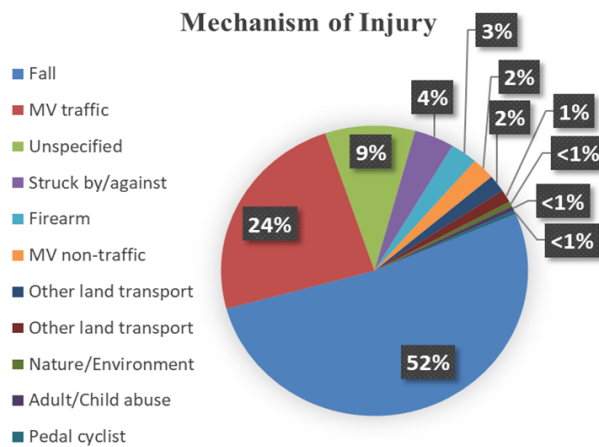
Mortality



Mechanism of Injury	Count
Firearm	528
Fall	249
MV Traffic	187
Not specified	61
Other	36
Other land transport	15
Struck by/against	10
Not elsewhere classifiable	9

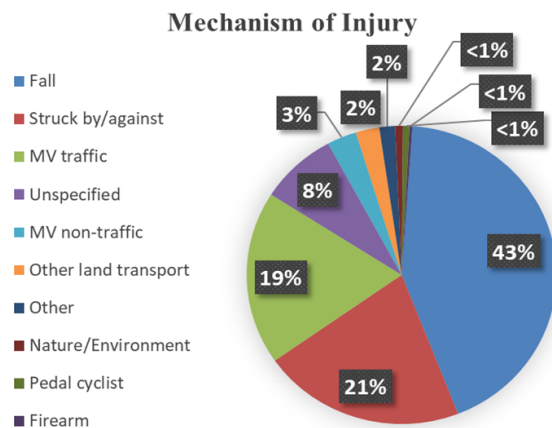
Note: Percentages may add up to more than 100% due to rounding.

Inpatient Hospitalizations



Mechanism of Injury	Count
Fall	1,573
MV traffic	724
Unspecified	286
Struck by/against	127
Firearm	86
MV non-traffic	74
Other land transport	57
Other land transport	43
Nature/Environment	17
Adult/Child abuse	16
Pedal cyclist	12

Emergency Department Visits



Mechanism of Injury	Count
Fall	4,542
Struck by/against	2,240
MV traffic	1,988
Unspecified	854
MV non-traffic	326
Other land transport	261
Other	173
Nature/Environment	86
Pedal cyclist	72
Firearm	31