



# Transforming Communities with an Innovative Approach to Recovery & Reentry

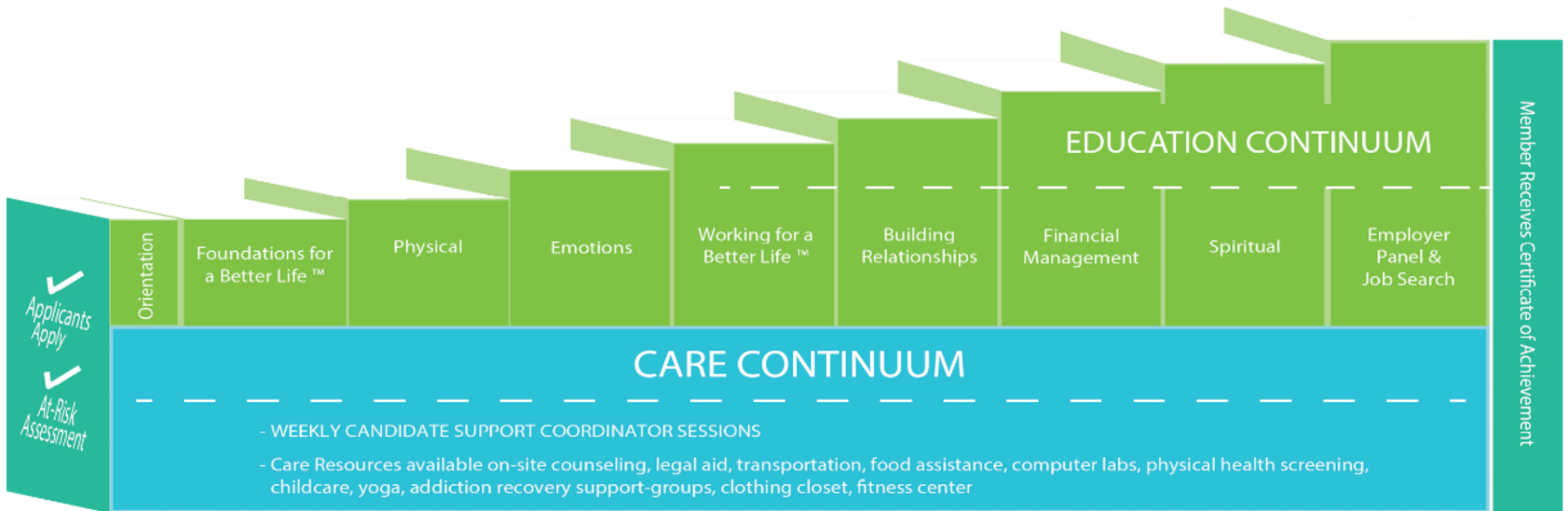
# Life Learning Center Overview

- ▶ We deliver a holistic, integrated continuum of education and care to help our “at-risk” citizens step up to their highest potential.
- ▶ Many socially oriented service programs provide only temporary relief; through barrier removal across the five domains of life (physical, emotional, relational, financial, and spiritual), we equip individuals with the necessary tools and resources to envision, achieve, and sustain a better future for themselves and their families.

We're building a caring and serving community by helping people learn, secure, and sustain a better way of living through gainful employment. The people we serve become healthier, happier, and more productive individuals working to change their future.



# LLC Dual Continuums of Education & Care

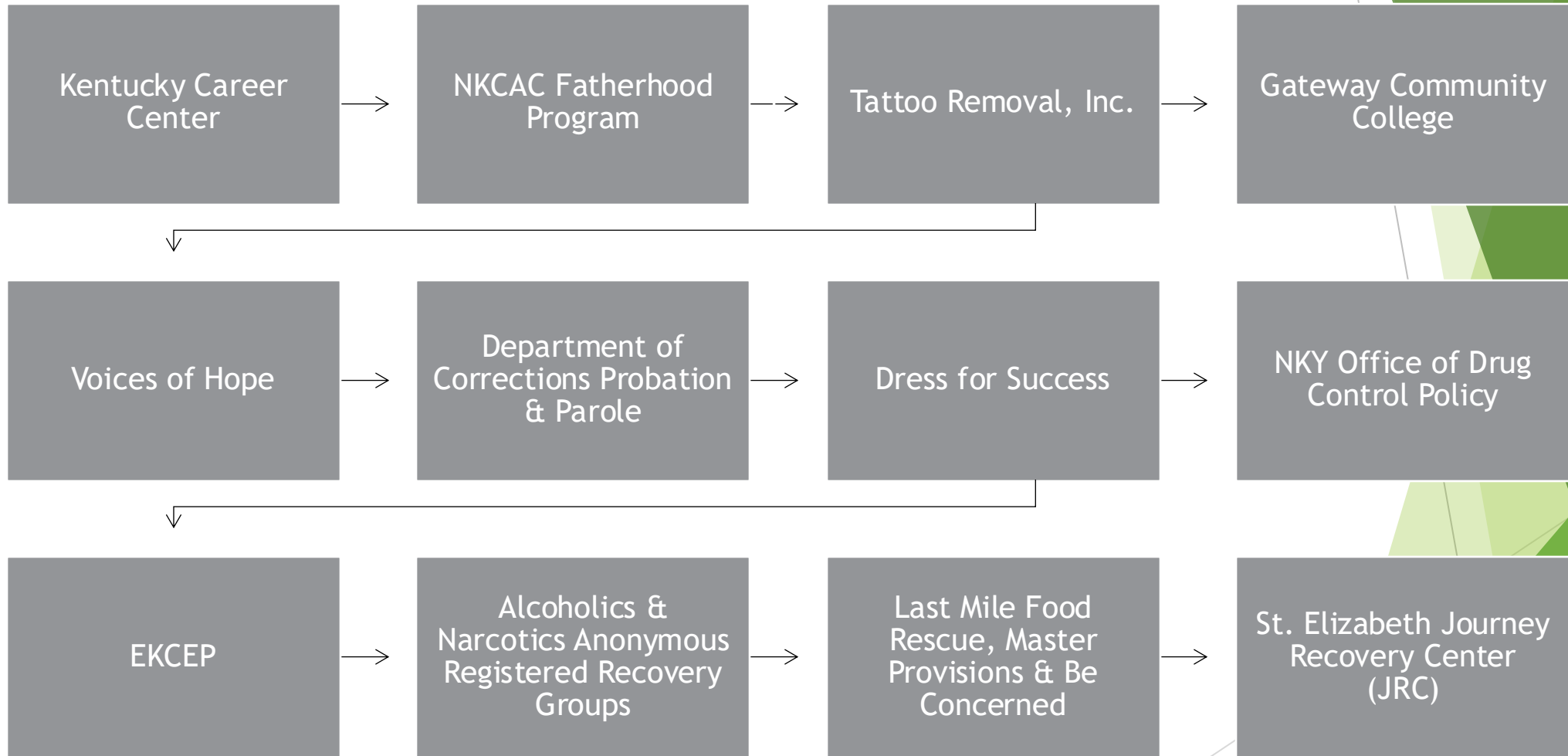




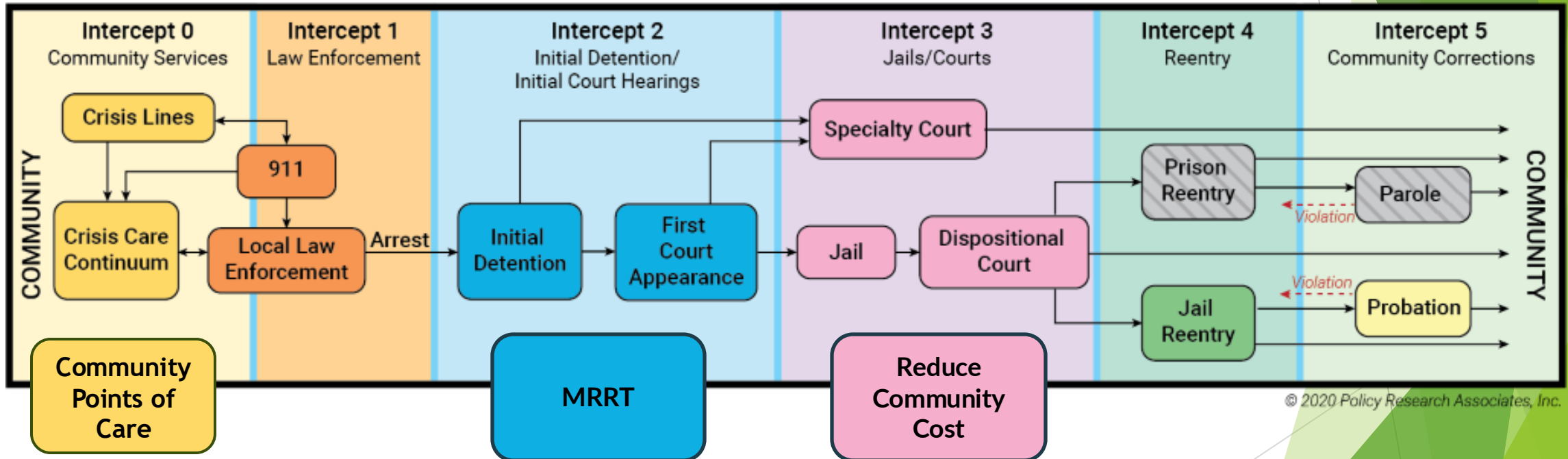
# Critical Elements of the LLC Service Model



# Residential and Community Partner Examples



# Sequential Intercept Model



© 2020 Policy Research Associates, Inc.

# Multidisciplinary Recovery Reentry Team (MRRT)



Non-violent / Non-sexual

Judicial System

MRRT



Life Learning Center™

Enrollment

Commence

Employment / Post Secondary Ed

MRRT

*DID NOT MEET LLC ENROLLMENT REQUIREMENTS (Higher Level of Care or Out of Scope)*

**Mental / Physical Health**

SUN, Northkey

**SUD Support**

Journey, SUN, Northkey, RTC,  
TenTen, ARC, Brightview

**Inability to Work / Not  
Willing to Work**

MRRT



Life Learning Center™



# Recovery Community Center Events



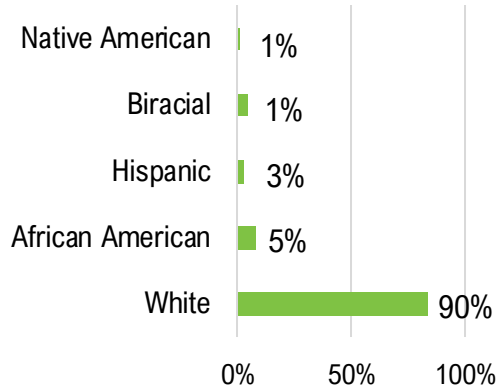
**55%**  
MALE

**45%**  
FEMALE



Average age of  
**38 Years Old**

RACE / ETHNICITY



**80%**  
CRIMINAL BACKGROUND

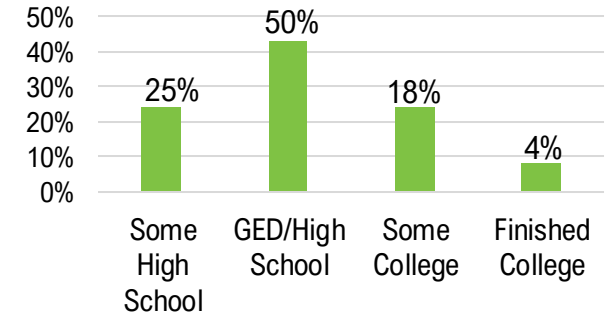


**52%**  
LACK TRANSPORTATION

**28%**  
LACK STABLE HOUSING

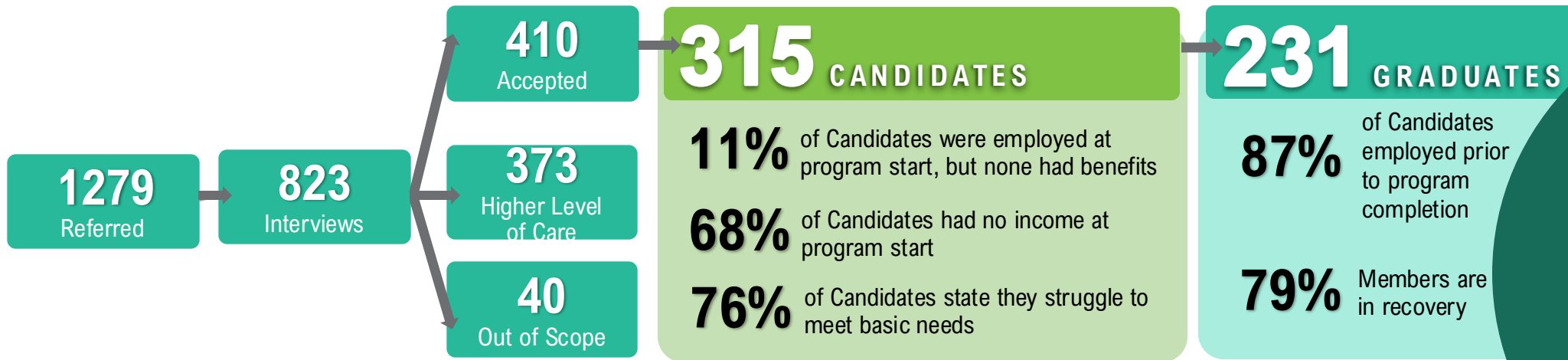


HIGHEST LEVEL OF EDUCATION



**68%**  
STRUGGLE WITH MENTAL HEALTH

**82%**  
SUBSTANCE USE DISORDER



**315** CANDIDATES

- 11%** of Candidates were employed at program start, but none had benefits
- 68%** of Candidates had no income at program start
- 76%** of Candidates state they struggle to meet basic needs

**231** GRADUATES

- 87%** of Candidates employed prior to program completion
- 79%** Members are in recovery

**\$7.2**  
Million dollars have been put back into the economy with an average salary of \$19/hour.

In addition, Life Learning Center's 2023 recidivism rate was 6% which is a stark contrast against the national average of 83%.

**30,019** CARE OFFERINGS DEPLOYED