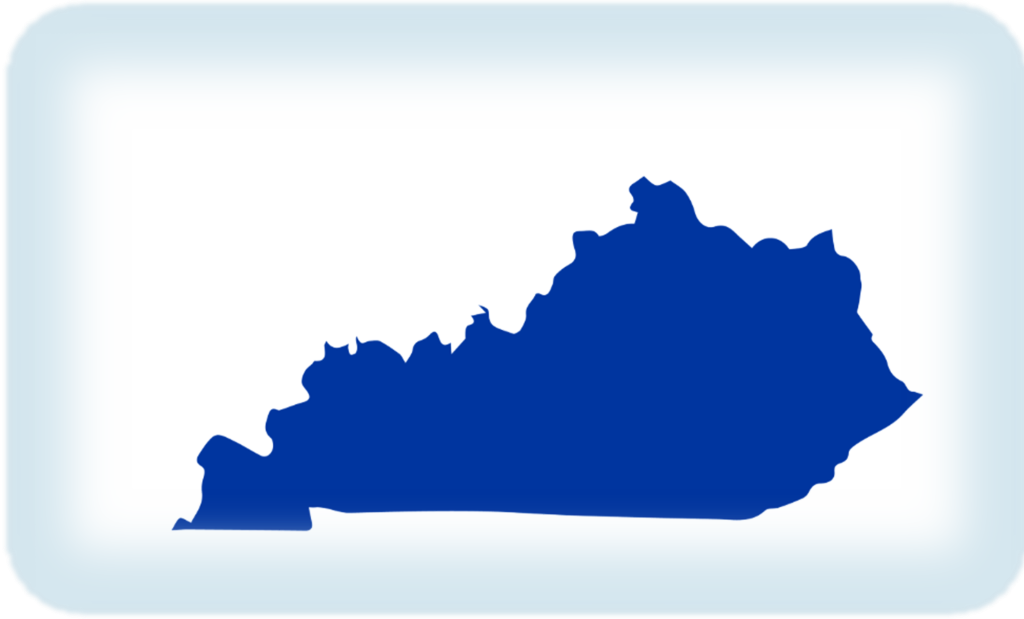


# KENTUCKY INJURY INDICATORS



**2023**

**KENTUCKY VIOLENCE AND INJURY PREVENTION PROGRAM (KVIPP)**

**COOPERATIVE AGREEMENT No. NU17CE010064**

**KENTUCKY INJURY PREVENTION AND RESEARCH CENTER**

**APRIL 2025**



This page intentionally left blank.

## **ACKNOWLEDGMENTS**

This report is funded through the Core State Injury Prevention Program by the National Center on Injury Prevention and Control at the Centers for Disease Control and Prevention, Agreement No. NU17CE010064.

### **Prepared by**

**Alaina Murphy (Alaina.murphy@uky.edu)**  
**Ashley M. Bush (Ashleybush@uky.edu)**

### **Released by**

Kentucky Violence and Injury Prevention Program  
Kentucky Injury Prevention and Research Center  
University of Kentucky College of Public Health  
Lexington, Kentucky

Suggested citation: Murphy, A. Bush, A. *Kentucky Injury Indicators, 2023*. Kentucky Injury Prevention and Research Center; April 2025.

This page intentionally left blank.

# TABLE OF CONTENTS

Executive Summary .....	1
Data Sources and Methods.....	2
<b>10 Leading Causes of Injury by Age Group and Intent</b>	
Definitions for Injury Data Matrices .....	4
Mortalities .....	5
Inpatient Hospitalizations .....	6
Emergency Department Visits.....	7
<b>Injury Indicators</b>	
All Injuries.....	8
Unintentional Falls.....	10
Unintentional Fire-Related Injuries.....	12
Firearm-Related Injuries.....	14
Homicide and Assault .....	16
Unintentional Motor Vehicle Traffic Crashes .....	18
Nondrug Poisoning .....	20
Drug Poisoning .....	22
Suicide and Self-Harm Injury .....	24
Traumatic Brain Injury.....	26

## Abbreviations

CDC	Centers for Disease Control and Prevention
CSTE	Council of State and Territorial Epidemiologists
ED	emergency department
ICD	International Classification of Diseases
ICD-10-CM	International Classification of Diseases, Clinical Modifications – Tenth Revision
KIPRC	Kentucky Injury Prevention and Research Center
MV	motor vehicle
ATV	all-terrain vehicle
PCR	police collision report
TBI	traumatic brain injury

## Executive Summary

### ***Mortalities***

There were 5,130 injury mortalities among Kentucky residents in 2023. Kentucky's overall age-adjusted injury mortality rate was 109.5 per 100,000 Kentucky resident population. The male and female age-adjusted rates were 153.9 and 66.2, respectively.

The leading mechanisms of injury mortality for Kentucky residents were *poisonings* (2,085), *fire-arms* (827), and *motor vehicle traffic crashes* (810). Males had higher age-adjusted mortality rates across these three injury mechanisms than did females. Ninety-seven percent of the poisonings were drug poisonings. The majority of the drug poisonings were unintentional (95%), involving prescription medications and/or illicit drugs. The majority of firearm injury-related deaths were intentional (suicide 65% and homicide 30%). All of the motor vehicle traffic crashes were unintentional.

There were 1,139 mortalities from traumatic brain injuries (TBI), where TBI was reported as a cause of death on the death certificate alone or in combination with other injuries or conditions, an age-adjusted rate of 23.1 per 100,000. Males (33.7 per 100,000) had a higher age-adjusted rate than females (13.1 per 100,000) for TBI mortalities.

### ***Inpatient Hospitalizations***

There were 22,058 injury-related inpatient hospitalization encounters among Kentucky residents in 2023. The age-adjusted rate for injury-related hospitalizations per 100,000 Kentucky resident population was 423.6. The male and female age-adjusted rates were 430.4 and 405.2, respectively.

The leading mechanisms of injury-related hospitalizations were *falls* (11,416), *drug poisonings* (2,834), and *motor vehicle (MV) traffic crashes* (2,385). Across the leading injury mechanisms, unintentional injuries were the most common (e.g., 99% of falls, 100% of drug poisonings, and 99% of MV traffic crashes). The male and female age-adjusted rates for unintentional falls were 170.8 and 228.3, respectively. The majority (95%) of the unintentional fall hospitalizations occurred among residents aged 45 and older. Males (61.9 per 100,000) had a higher age-adjusted hospitalization rate for drug poisoning than females (60.7). Males (63.5 per 100,000) had a higher rate for unintentional MV traffic crash hospitalizations than females (36.8).

TBI (either TBI alone or in combination with other injuries) accounted for 3,147 hospitalizations. The majority of the TBI-related inpatient hospitalizations were unintentional (88%). *Falls* (53%) and *MV traffic crashes* (25%) were the leading mechanisms of TBI-related hospitalizations. Males (77.8 per 100,000) had a higher age-adjusted rate than females (43.1) for TBI hospitalizations.

### ***Emergency Department Visits***

There were 436,488 injury-related emergency department (ED) visits among Kentucky residents in 2023. The age-adjusted rate for injury-related ED visit discharges per 100,000 Kentucky resident population was 9,564.6. The male and female age-adjusted rates were 9,751.3 and 9,317.6, respectively.

The majority of the injury-related ED visits were unintentional (88%). The leading mechanisms of injury-related ED visits were *falls* (140,534), *unspecified* (73,062), being *struck by/against an object or person* (51,849), and *motor vehicle traffic crashes* (45,716). The majority of the falls were unintentional (99%). The male and female age-adjusted rates for unintentional fall-related ED visits were 2,508.1 and 3,157.7, respectively.

TBI (either TBI alone or in combination with other injuries) accounted for 11,824 ED visits. The majority of the TBI-related ED visits were unintentional (98%). The leading mechanisms of TBI-related ED visits were *falls* (42%), *struck by/against* (24%), and *MV traffic crashes* (17%). Males (268.6 per 100,000) had a higher age-adjusted rate than females (235.8) for TBI hospitalizations.

# Data Sources and Methods

## Data Sources

All data are provisional and subject to change.

### *Population Data*

United States Census Bureau. (2024). Annual county resident population estimates by age, sex, race, and Hispanic origin: April 1, 2020-July 1, 2023 (CC-EST2023-ALLDATA). U.S. Department of Commerce. Accessed at <https://www.census.gov/programs-surveys/popest.html>

### *Mortality Data*

Kentucky Death Certificate Database, Kentucky Office of Vital Statistics, Cabinet for Health and Family Services

### *Inpatient Hospitalization Discharge Data*

Kentucky Inpatient Hospitalization Claims Files, Office of Health Data and Analytics, Cabinet for Health and Family Services. Note: Counts represent encounters of care and could be greater than the number of individual patients treated at an acute care facility.

### *Emergency Department Visit Discharge Data*

Kentucky Outpatient Services Database, Office of Health Data and Analytics, Cabinet for Health and Family Services. Note: Counts represent encounters of care and could be greater than the number of individual patients treated.

## Methods

### *Injury-Related Mortality*

The definitions for fatal injuries (deaths) used in this report correspond to the Centers for Disease Control and Prevention's (CDC's) "State Injury Indicators Report: Instructions for Preparing 2022 Data" that was released June 2024. An International Classification of Diseases, Tenth Revision [ICD-10] code in an underlying cause of death field was used to identify the mechanism and manner of fatal injuries.

A mortality count of at least one but fewer than six is suppressed per state data policy.

**PLEASE NOTE:** *Death counts in this report are based on state death certificate files and thus cannot be expected to match counts based on other sources. In particular, numbers of motor vehicle traffic deaths will not match those based on police collision reports (PCRs) because the two systems do not report on identical underlying populations. Death certificates capture deaths of Kentucky residents regardless of where they occur; PCRs capture deaths that occur on Kentucky roads only, regardless of state of residence. Similarly, counts of homicides and assaults in this report will not match counts based on police crime reports. These data sources should be viewed as complementary. There also exist specialized death certificate-based surveillance systems for injury mortalities at both the state (e.g., the Kentucky Violent Death Reporting System and Child Fatality Reviews) and national levels (e.g., CDC's Web-Based Injury Statistics Query and Reporting System [WISQARS] and Wide-ranging Online Data for Epidemiologic Research [WONDER]). Counts from those systems may not exactly match counts in this report due to differences in inclusion criteria, case definitions, the use of ancillary data sources for case identification, or other factors.*



### *Injury-Related Inpatient Hospitalizations*

Hospitalizations were limited to discharges from nonfederal, acute care, or inpatient facilities. The CDC's surveillance definition for injury hospitalizations was used; only initial encounters were included (indicated by a seventh character of "A" or missing in the International Classification of Diseases, Tenth Revision, Clinical Modification [ICD-10-CM] code). The injury subset for hospitalizations was created by selecting discharges having a principal diagnosis code.

The CDC external causes of injury matrix (updated January 2024) was used to categorize the injury visit by mechanism of injury and intent. Injury details were provided using external cause of morbidity codes, which are not required for discharge billing purposes; therefore, every injury hospitalization may not have this level of detail. Traumatic brain injury hospitalizations were defined using CDC's "State Injury Indicators Report: Instructions for Preparing 2022 Data".

Note that inpatient hospitalizations resulting in death are included in the total inpatient injury hospitalization count. An inpatient hospitalization count of at least one but fewer than five is suppressed per state data policy.

### *Injury-Related Emergency Department Visits*

The CDC's surveillance definition for injury emergency department visits was used; only initial encounters were included (seventh character of "A" or missing) in the ED data set using ICD-10-CM diagnosis codes or external cause codes. The injury subset for ED visits was used, applying an any mention approach.

The CDC's external causes of injury matrix (updated January 2024) was used to categorize the injury visit by mechanism of injury and intent. The external causes of morbidity, which were used to provide injury details, are not required for discharge billing purposes; therefore, every injury ED visit may not have this level of detail. Traumatic brain injury hospitalizations were defined using CDC's "State Injury Indicators Report: Instructions for Preparing 2022 Data".

Note that ED visits, including those resulting in inpatient hospitalization or death, are included in the total injury ED visit count. An ED visit count of at least one but fewer than five is suppressed per state data policy.

### *Calculation of Rates and Data Presentation*

All data were limited to Kentucky residents.

Two types of rates are reported. Age-specific ("crude") rates were calculated by dividing the number of injury events occurring in a particular age group by the estimated number of Kentucky residents in that age group in 2023 and multiplying by 100,000. Age-adjusted rates were adjusted to the year 2000 standard population. Rates based on counts of 20 or fewer may be unstable.

Note that data are presented as aggregated counts. Certain counts have been suppressed because either the observed number of injury events is very small and not appropriate for publication or the count can be used to calculate the number in a count that has been suppressed per state data policies.

## Definitions for Injury Data Matrices

**Motor vehicle non-traffic (MV non-traffic)**—Includes motor vehicle crashes that occurred somewhere other than on a public roadway.

**Motor vehicle traffic (MV traffic)**—Includes crashes that occurred on a public roadway and involved at least one motor vehicle. All persons injured in MV traffic incidents are counted here. Pedal cyclists and pedestrians who were struck by a motor vehicle would be counted here, but those who crashed on a public roadway without involvement of a motor vehicle would be counted elsewhere (see “Pedal cyclist, other” definition).

**Natural/Environmental**—Includes causes related to nature and the environment (insect bites and stings, animal bites, extreme weather, excessive heat or cold, etc.).

**Other land transport**—Includes motor vehicle crashes that occurred somewhere other than on a public roadway, rail injuries, etc. Does not include air or water injuries.

**Other specified**—Includes a variety of relatively low-incidence causes of injury grouped together. Includes causes not elsewhere classified; an external cause of injury code that is intended for use when no other code exists to adequately describe the mechanism and manner of injury.

**Pedal cyclist, other**—Includes pedal cyclists who crashed on a public roadway without involvement of a motor vehicle.

**Poisoning**—Includes drug and non-drug poisonings, unless otherwise noted.

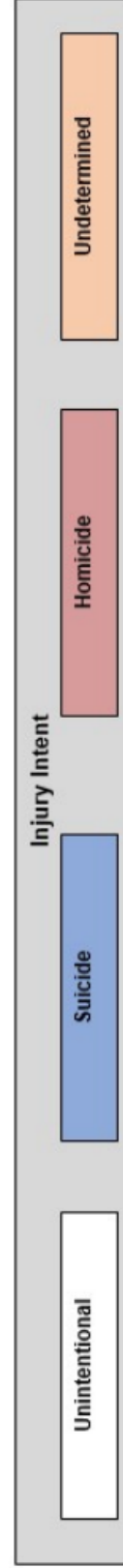
**Self-harm/Suicide**—Includes injuries resulting from behaviors deliberately trying to harm or injure oneself. Data for persons aged <10 years are not shown, as it is difficult to determine suicide intent among younger children.

**Tie**—Indicates a tied count for a leading cause of injury-related mortality or morbidity.

**Unspecified**—Includes injuries for which an external code of injury either (a) was not specified or (b) was specified but did not indicate the mechanism or manner of injury.

### 10 Leading Causes of Injury-Related Mortality by Age Group and Intent, 2023 Kentucky Residents

Rank	Age Groups											
	0-4	5-10	11-14	15-19	20-24	25-34	35-44	45-54	55-64	65-74	75-84	85+
1	Suffocation 21		Motor Vehicle Traffic 6	Motor Vehicle Traffic 46	Poisoning 79	Poisoning 388	Poisoning 572	Poisoning 470	Poisoning 362	Motor Vehicle Traffic 98	Fall 159	Fall 162
2	Drowning 9			Firearm 34	Motor Vehicle Traffic 67	Motor Vehicle Traffic 128	Motor Vehicle Traffic 123	Motor Vehicle Traffic 118	Motor Vehicle Traffic 112	Poisoning 95	Motor Vehicle Traffic 70	Unspecified 104
3	Motor Vehicle Traffic 8			Firearm 25	Firearm 44	Firearm 79	Firearm 72	Firearm 83	Firearm 77	Firearm 92	Unspecified 66	Motor Vehicle Traffic 30
4	Poisoning 7			Poisoning 12	Firearm 42	Firearm 54	Firearm 61	Firearm 29	Fall 33	Fall 83	Firearm 49	Suffocation 14
5				Suffocation 6	Suffocation 14	Suffocation 33	Suffocation 43	Suffocation 25	Fire/Flame 20	Unspecified 23	Suffocation 17	Firearm 12
6					Poisoning 6	Poisoning 14	Poisoning 13	Poisoning 14	Unspecified 16	Fire/Flame 22	Fire/Flame 12	
7						Pedestrian, Other 6	Fall 11	Fall 10	Firearm 15	Suffocation 21	Natural/ Environmental 8	
8							Poisoning 10	Natural/ Environmental 10	Suffocation 15	Natural/ Environmental 8	Poisoning 7	
9							Unspecified 6	Unspecified 10	Suffocation 13	Machinery 7	Poisoning 6	
10								Other Land Transport 8	Poisoning 10	Other Specified 7		



Counts less than 6 are not included in this matrix. Produced by the Kentucky Injury Prevention and Research Center, as bona fide agent for the Kentucky Department for Public Health, April 2025. This product was supported by grant numbers NU17CE010064 (Centers for Disease Control and Prevention) and 3048114413. Data source: Kentucky Death Certificate Database, Kentucky Office of Vital Statistics, Cabinet for Health and Family Services. Data are provisional and subject to change.

## 10 Leading Causes of Injury-Related Inpatient Hospitalizations by Age Group and Intent, 2023 Kentucky Residents

Rank	Age Groups										Injury Intent		
	0-4	5-10	11-14	15-19	20-24	25-34	35-44	45-54	55-64	65-74		75-84	85+
1	Abuse 100	Fall 45	Drug Poisoning 62	Motor Vehicle Traffic 194	Motor Vehicle Traffic 154	Motor Vehicle Traffic 313	Motor Vehicle Traffic 350	Fall 493	Fall 1,263	Fall 2,551	Fall 3,661	Fall 2,842	Undetermined
2	Fall 63	Motor Vehicle Traffic 27	Motor Vehicle Nontraffic 31	Drug Poisoning 162	Drug Poisoning 117	Drug Poisoning 284	Drug Poisoning 304	Motor Vehicle Traffic 325	Motor Vehicle Traffic 364	Motor Vehicle Traffic 307	Motor Vehicle Traffic 218	Motor Vehicle Traffic 79	Self-Harm
3	Drug Poisoning 54	Bite/Sting 11	Fall 30	Motor Vehicle Nontraffic 49	Drug Poisoning 74	Drug Poisoning 156	Fall 258	Drug Poisoning 259	Drug Poisoning 299	Drug Poisoning 204	Unspecified 89	Unspecified 55	Assault
4	Hot Object 18	Motor Vehicle Nontraffic 11	Motor Vehicle Traffic 27	Drug Poisoning 48	Fall 36	Fall 138	Drug Poisoning 163	Drug Poisoning 159	Drug Poisoning 126	Unspecified 83	Drug Poisoning 86	Struck by/Against 52	Assault
5	Motor Vehicle Traffic 17	Cut/Pierce 6	Abuse 10	Firearm 35	Firearm 34	Firearm 55	Motor Vehicle Nontraffic 45	Unspecified 44	Unspecified 53	Struck by/Against 71	Struck by/Against 79	Drug Poisoning 38	Assault
6	Foreign Body 16	Pedal Cyclist, Other 6	Drug Poisoning 9	Fall 33	Motor Vehicle Nontraffic 28	Foreign Body 47	Firearm 41	Motor Vehicle Nontraffic 42	Struck by/Against 35	Drug Poisoning 52	Foreign Body 22	Foreign Body 23	Assault
7	Unspecified 10	Struck by/Against 5	Struck by/Against 8	Firearm 26	Foreign Body 16	Motor Vehicle Nontraffic 30	Struck by/Against 40	Drug Poisoning 39	Bite/Sting 28	Foreign Body 27	Motor Vehicle Nontraffic 20	Natural/ Environmental 10	Assault
8	Bite/Sting 9	Unspecified 5	Other Land Transport 6	Foreign Body 13	Cut/Pierce 14	Struck by/Against 30	Foreign Body 38	Struck by/Against 33	Motor Vehicle Nontraffic 26	Motor Vehicle Nontraffic 26	Natural/ Environmental 18	Drug Poisoning 9	Self-Harm
9	Struck by/Against 7	Foreign Body 5	Unspecified 6	Abuse 11	Firearm 14	Drug Poisoning 26	Unspecified 28	Struck by/Against 31	Non-Drug Poisoning 26	Non-Drug Poisoning 26	Overexertion 13	Suffocation 5	Assault
10	Fire/Flame 5	Abuse 5	Other Specified 5	Struck by/Against 10	Unspecified 13	Cut/Pierce 24	Drug Poisoning 28	Non-Drug Poisoning 25	Struck by/Against 25	Overexertion 25	Non-Drug Poisoning 12	Abuse 5	Undetermined

Counts less than five are not included in this matrix. Counts represent encounters of care and could be greater than the number of individual patients treated. Produced by the Kentucky Injury Prevention and Research Center, as bona fide agent for the Kentucky Department for Public Health, April 2025. This product was supported by grants numbers NU17CE010064 (Centers for Disease Control and Prevention) and 3048114413. Data source: Kentucky Inpatient Hospitalization Claims Files, Office of Health Data and Analytics, Cabinet for Health and Family Services. Data are provisional and subject to change.

## 10 Leading Causes of Injury-Related Emergency Department Visits by Age Group and Intent, 2023 Kentucky Residents

Rank	Age Groups										Injury Intent	
	0-4	5-10	11-14	15-19	20-24	25-34	35-44	45-54	55-64	65-74		75-44
1	Fall 12,638	Fall 10,176	Fall 5,757	Fall 5,085	Motor Vehicle Traffic 5,176	Fall 8,819	Fall 9,802	Fall 12,502	Fall 17,806	Fall 20,904	Fall 20,221	Fall 12,526
2	Struck by/Against 3,518	Struck by/Against 4,904	Struck by/Against 4,418	Struck by/Against 5,051	Fall 4,236	Motor Vehicle Traffic 8,681	Motor Vehicle Traffic 7,382	Motor Vehicle Traffic 5,741	Motor Vehicle Traffic 4,860	Motor Vehicle Traffic 2,963	Unspecified 1,834	Unspecified 828
3	Unspecified 2,315	Unspecified 2,072	Overexertion 2,216	Motor Vehicle Traffic 4,877	Struck by/Against 3,217	Unspecified 5,307	Unspecified 5,155	Unspecified 4,744	Unspecified 4,156	Unspecified 2,899	Struck by/Against 1,467	Struck by/Against 680
4	Bite/Sting 1,910	Motor Vehicle Traffic 1,889	Unspecified 1,921	Overexertion 2,907	Cut/Pierce 2,639	Struck by/Against 5,276	Struck by/Against 4,450	Overexertion 3,699	Struck by/Against 3,181	Struck by/Against 2,433	Motor Vehicle Traffic 1,312	Motor Vehicle Traffic 306
5	Foreign Body 1,607	Cut/Pierce 1,885	Cut/Pierce 1,421	Unspecified 2,589	Unspecified 2,358	Cut/Pierce 4,662	Overexertion 4,334	Struck by/Against 3,672	Overexertion 2,859	Cut/Pierce 1,797	Overexertion 850	Overexertion 248
6	Motor Vehicle Traffic 1,119	Bite/Sting 1,852	Motor Vehicle Traffic 1,330	Cut/Pierce 2,376	Overexertion 2,304	Overexertion 4,453	Cut/Pierce 4,146	Cut/Pierce 3,096	Cut/Pierce 2,704	Overexertion 1,728	Cut/Pierce 792	Cut/Pierce 196
7	Cut/Pierce 1,105	Overexertion 1,137	Bite/Sting 795	Struck by/Against 1,077	Bite/Sting 1,250	Bite/Sting 2,340	Bite/Sting 2,391	Bite/Sting 2,287	Bite/Sting 1,887	Bite/Sting 1,285	Bite/Sting 573	Foreign Body 177
8	Other Specified 790	Other Specified 902	Motor Vehicle Nontraffic 620	Bite/Sting 1,075	Struck by/Against 1,202	Struck by/Against 2,220	Struck by/Against 1,734	Struck by/Against 1,135	Struck by/Against 806	Foreign Body 512	Foreign Body 351	Bite/Sting 121
9	Drug Poisoning 697	Foreign Body 892	Struck by/Against 592	Motor Vehicle Nontraffic 978	Other Specified 691	Drug Poisoning 1,598	Drug Poisoning 1,642	Drug Poisoning 1,077	Drug Poisoning 721	Other Specified 419	Drug Poisoning 202	Drug Poisoning 75
10	Overexertion 591	Pedal Cyclist, Other 507	Other Specified 564	Other Specified 676	Motor Vehicle Nontraffic 592	Other Specified 1,191	Other Specified 1,106	Other Specified 806	Foreign Body 624	Drug Poisoning 406	Other Specified 200	Other Specified 68



Counts represent encounters of care and could be greater than the number of individual patients treated. Produced by the Kentucky Injury Prevention and Research Center, as bona fide agent for the Kentucky Department for Public Health, April 2025. This product was supported by grant numbers NU17CE010064 (Centers for Disease Control and Prevention) and 3048114413. Data source: Kentucky Outpatient Services Database Files, Office of Health Data and Analytics, Cabinet for Health and Family Services. Data are provisional and subject to change.

# All Injuries by Age and Sex

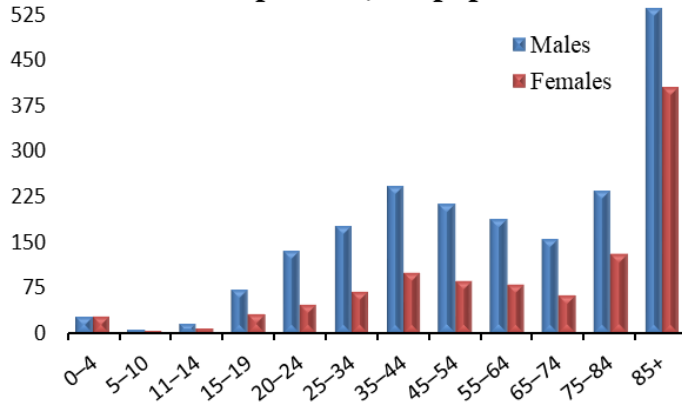
## Mortality

Total: 5,130 (109.5)<sup>^</sup>

Males: 3,492 (153.9)

Females: 1,638 (66.2)

### Crude rate per 100,000 population



Age	Males	Females
0-4	37	34
5-10	9	6
11-14	23	9
15-19	107	43
20-24	207	66
25-34	538	195
35-44	688	280
45-54	593	237
55-64	535	233
65-74	354	159
75-84	255	179
85+	146	197

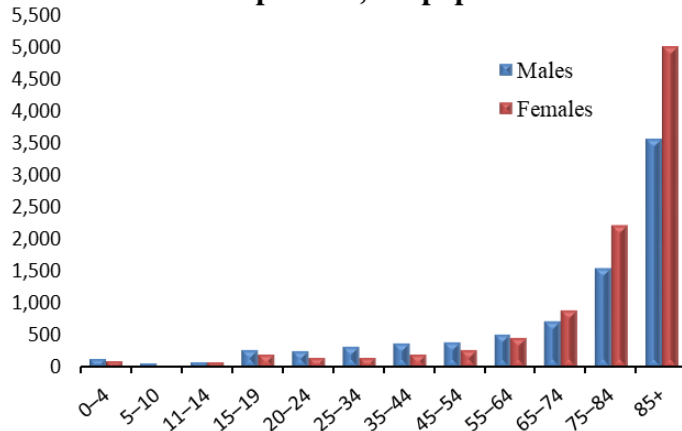
## Inpatient Hospitalizations

Total: 22,058 (423.6)

Males: 10,223 (430.4)

Females: 11,835 (405.2)

### Crude rate per 100,000 population



Age	Males	Females
0-4	192	141
5-10	104	53
11-14	122	121
15-19	415	291
20-24	413	229
25-34	1,000	439
35-44	1,113	572
45-54	1,090	794
55-64	1,471	1,373
65-74	1,653	2,310
75-84	1,678	3,072
85+	972	2,440

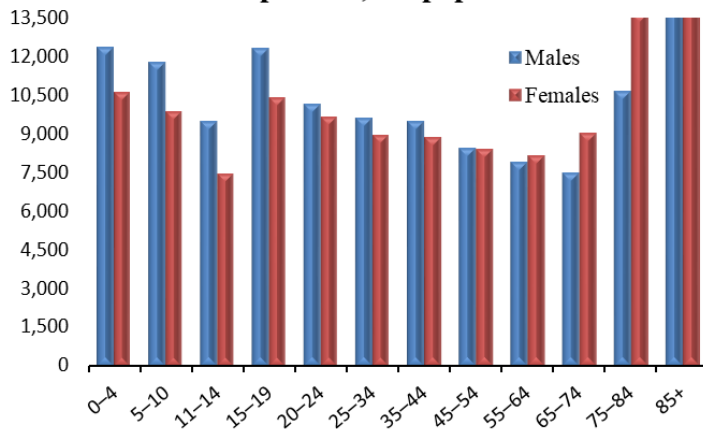
## Emergency Department Visits

Total: 436,488 (9,564.6)

Males: 217,937 (9,751.3)

Females: 218,551 (9,317.6)

### Crude rate per 100,000 population



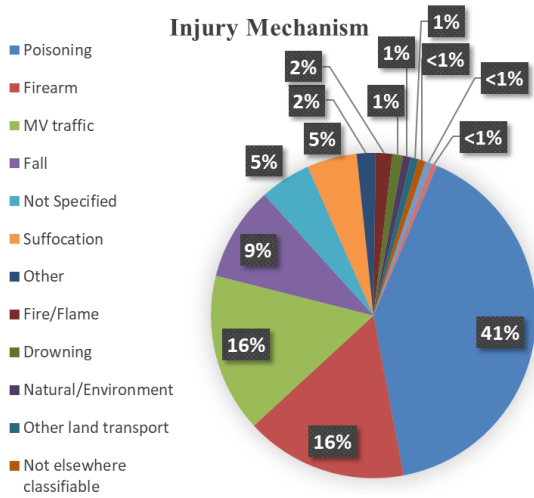
Age	Males	Females
0-4	16,704	13,692
5-10	17,078	13,584
11-14	14,076	10,363
15-19	18,632	14,939
20-24	15,539	13,920
25-34	29,224	26,136
35-44	27,072	24,964
45-54	23,531	23,292
55-64	22,393	24,199
65-74	17,077	23,245
75-84	11,538	18,955
85+	5,073	11,262

<sup>^</sup>Age-adjusted rate per 100,000 population  
Rates based on counts of 20 or less may be unstable.



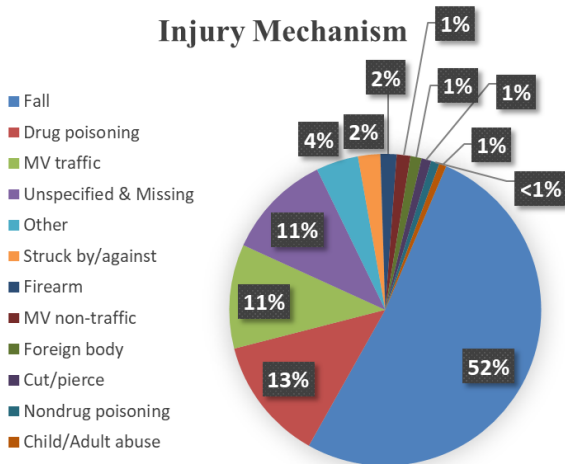
# All Injuries by Injury Mechanism

## Mortality



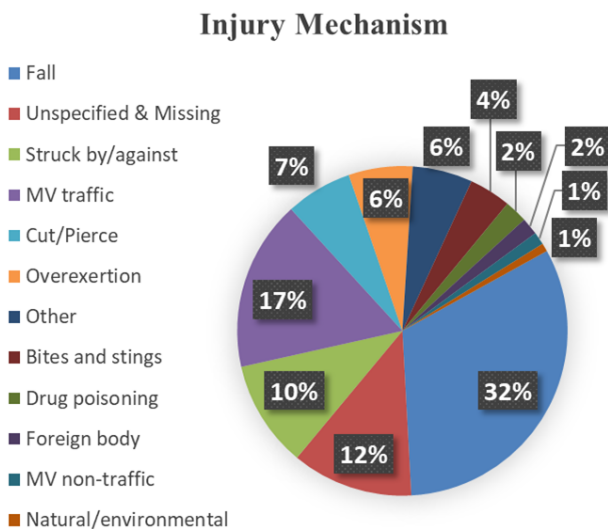
Injury Mechanism	Count
Poisoning	2,085
Firearm	827
MV traffic	810
Fall	480
Not Specified	260
Suffocation	255
Other	96
Fire/Flame	85
Drowning	54
Natural/Environment	41
Other land transport	39
Not elsewhere classifiable	37
Struck by/against	32
Cut/Pierce	29

## Inpatient Hospitalizations



Injury Mechanism	Count
Fall	11,416
Drug poisoning	2,834
MV traffic	2,385
Unspecified & Missing	2,426
Other	969
Struck by/against	509
Firearm	369
MV non-traffic	314
Foreign body	256
Cut/pierce	222
Nondrug poisoning	193
Child/Adult abuse	165

## Emergency Department Visits



Injury Mechanism	Count
Fall	140,534
Unspecified & Missing	73,062
Struck by/against	51,849
MV traffic	45,716
Cut/Pierce	28,399
Overexertion	27,326
Other	25,660
Bites and stings	17,863
Drug poisoning	9,775
Foreign body	7,366
MV non-traffic	5,433
Natural/environmental	3,505

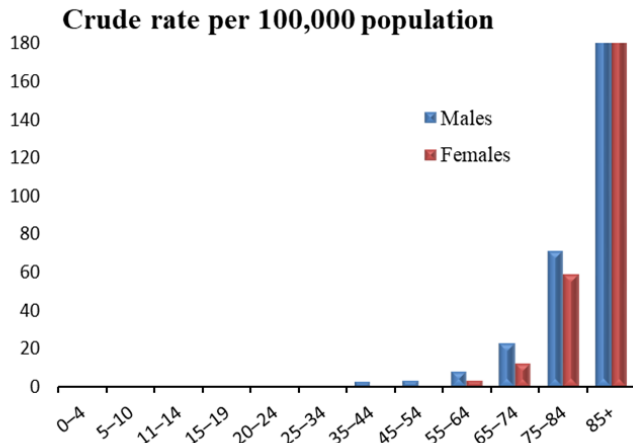
# Unintentional Falls by Age and Sex

## Mortality

Total: 463 (8.5)<sup>^</sup>

Males: 236 (10.1)

Females: 227 (7.2)



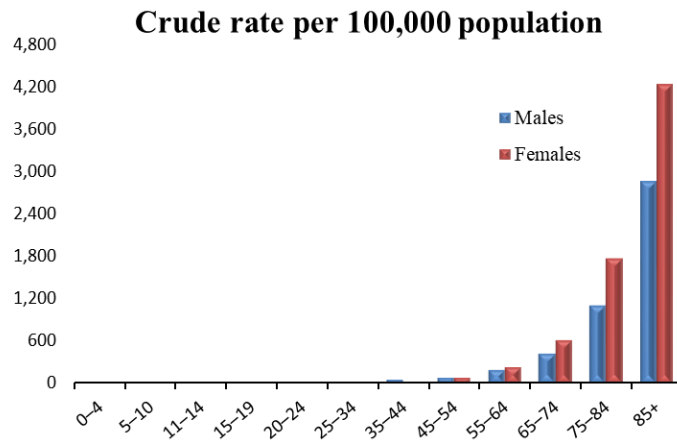
Age	Counts	
	Males	Females
0-4	0	0
5-10	0	0
11-14	0	0
15-19	*	0
20-24	0	0
25-34	*	*
35-44	7	*
45-54	8	*
55-64	23	10
65-74	52	31
75-84	77	82
85+	65	97

## Inpatient Hospitalization

Total: 11,412 (204.9)

Males: 4,167 (170.8)

Females 7,245 (228.3)



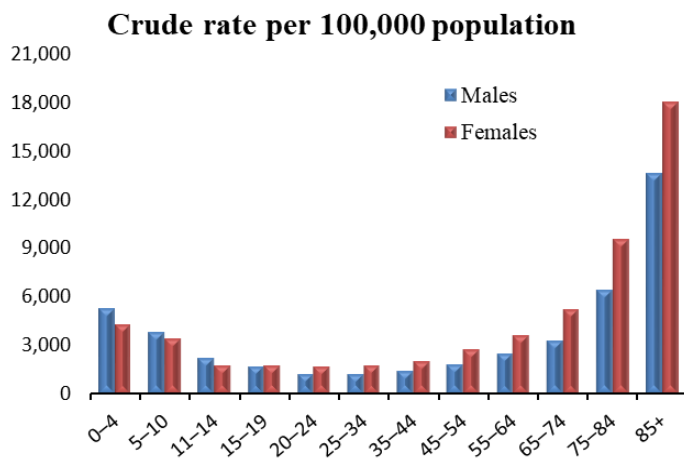
Age	Counts	
	Males	Females
0-4	44	19
5-10	28	17
11-14	22	8
15-19	26	7
20-24	23	13
25-34	105	33
35-44	167	91
45-54	241	252
55-64	562	701
65-74	964	1,587
75-84	1,205	2,455
85+	780	2,062

## Emergency Department Visits

Total: 140,472 (2,856.0)

Males: 58,306 (2,508.1)

Females: 82,166 (3,157.7)



Age	Counts	
	Males	Females
0-4	7,138	5,500
5-10	5,477	4,699
11-14	3,303	2,454
15-19	2,564	2,521
20-24	1,795	2,441
25-34	3,713	5,106
35-44	4,080	5,722
45-54	4,978	7,524
55-64	7,075	10,731
65-74	7,484	13,420
75-84	6,986	13,235
85+	3,713	8,813

<sup>^</sup>Age-adjusted rate per 100,000 population

\*Suppressed per state data policies

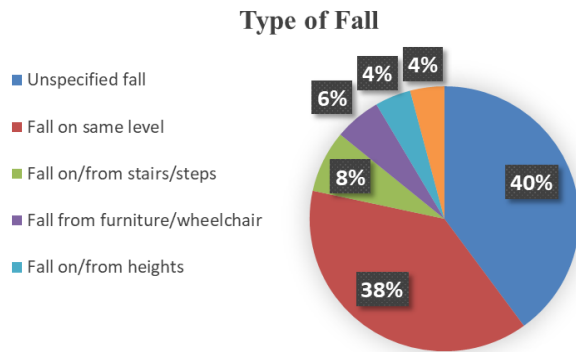
Rates based on counts of 20 or less may be unstable.





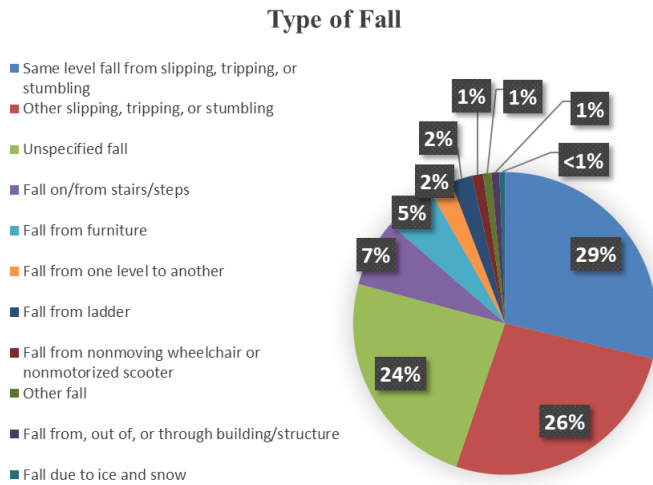
# Unintentional Falls by Type of Fall

## Mortality



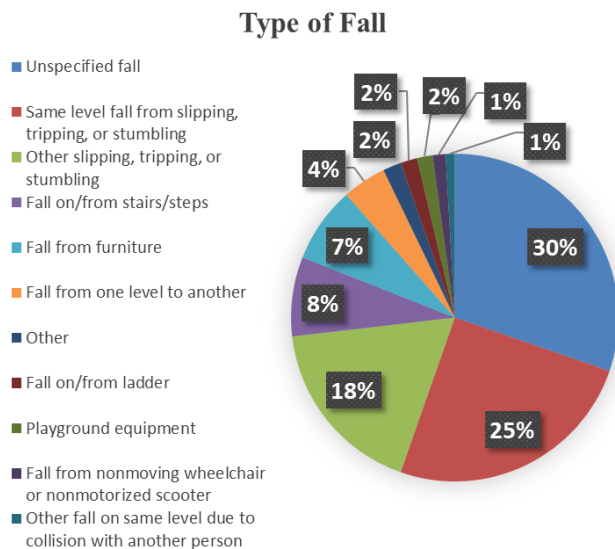
Type of Fall	Count
Unspecified fall	185
Fall on same level	178
Fall on/from stairs/steps	35
Fall from furniture/wheelchair	26
Fall on/from heights	20
Other fall from one level to another	19

## Inpatient Hospitalizations



Type of Fall	Count
Same level fall from slipping, tripping, or stumbling	3,281
Other slipping, tripping, or stumbling	3,022
Unspecified fall	2,736
Fall on/from stairs/steps	818
Fall from furniture	622
Fall from one level to another	271
Fall from ladder	262
Fall from nonmoving wheelchair or nonmotorized scooter	133
Other fall	102
Fall from, out of, or through building/structure	95
Fall due to ice and snow	70

## Emergency Department Visits



Type of Fall	Count
Unspecified fall	42,558
Same level fall from slipping, tripping, or stumbling	35,221
Other slipping, tripping, or stumbling	24,987
Fall on/from stairs/steps	11,006
Fall from furniture	10,525
Fall from one level to another	6,104
Other	2,538
Fall on/from ladder	2,327
Playground equipment	2,157
Fall from nonmoving wheelchair or nonmotorized scooter	1,795
Other fall on same level due to collision with another person	1,254

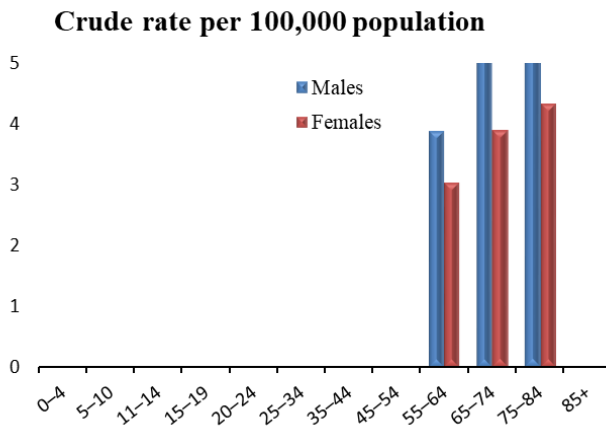
# Unintentional Fire-Related Injuries by Age and Sex

## Mortality

Total: 75 (1.3)<sup>^</sup>

Males: 39 (1.4)

Females: 36 (1.3)



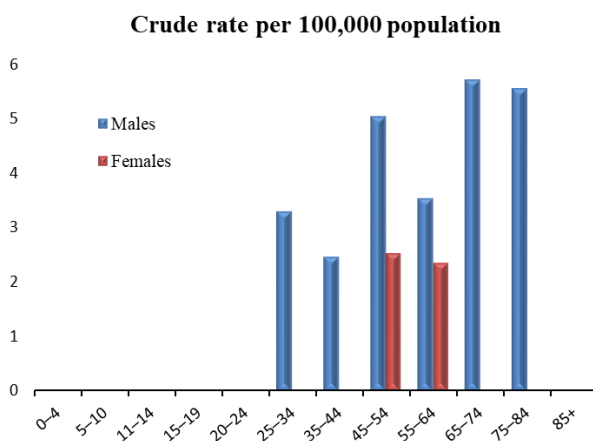
Age	Males	Females
0-4	*	0
5-10	*	*
11-14	0	0
15-19	0	*
20-24	0	*
25-34	*	*
35-44	*	*
45-54	*	*
55-64	11	9
65-74	12	10
75-84	6	6
85+	0	*

## Inpatient Hospitalizations

Total: 96 (1.9)

Males: 67 (2.7)

Females: 29 (1.1)



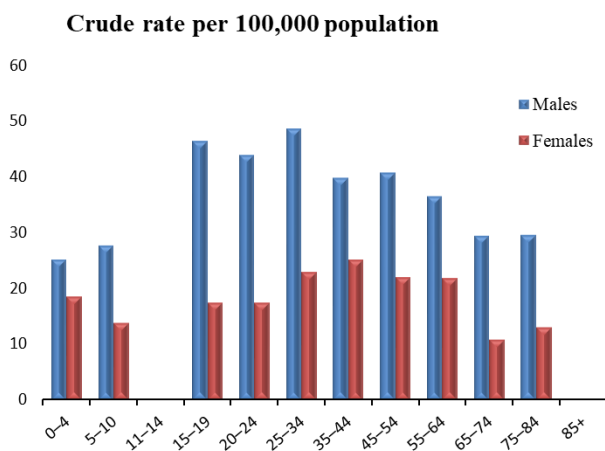
Age	Males	Females
0-4	*	*
5-10	0	*
11-14	0	*
15-19	*	0
20-24	*	0
25-34	10	*
35-44	7	*
45-54	14	7
55-64	10	7
65-74	13	*
75-84	6	*
85+	*	*

## Emergency Department Visits

Total: 1,242 (26.6)

Males: 822 (35.4)

Females: 420 (17.9)



Age	Males	Females
0-4	34	24
5-10	40	19
11-14	##	##
15-19	70	25
20-24	67	25
25-34	147	67
35-44	113	71
45-54	113	61
55-64	103	65
65-74	67	28
75-84	32	18
85+	*	*

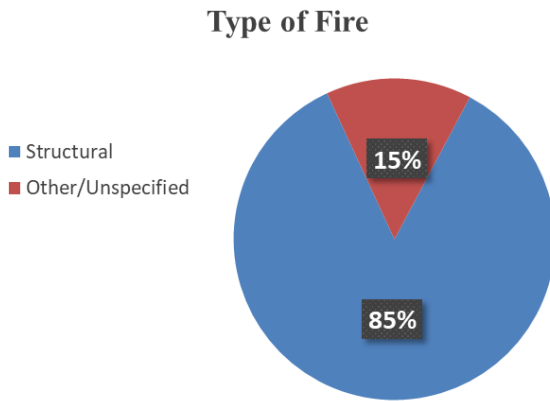
<sup>^</sup>Age-adjusted rate per 100,000 population  
 \*Suppressed per state data policies  
 Rates based on counts of 20 or less may be unstable.

##Suppressed to prevent indirect disclosure



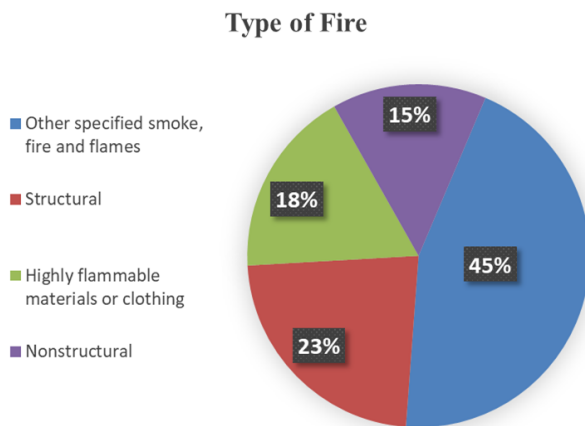
# Unintentional Fire-Related Injuries by Type of Fire

## Mortality



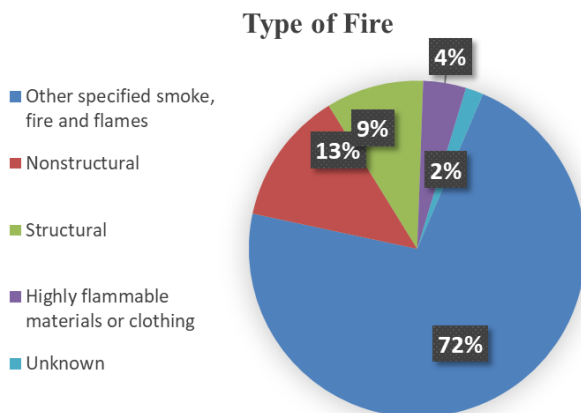
Type of Fire	Count
Structural	64
Other/Unspecified	11

## Inpatient Hospitalizations



Type of Fire	Count
Other specified smoke, fire and flames	43
Structural	22
Highly flammable materials or clothing	17
Nonstructural	14

## Emergency Department Visits



Type of Fire	Count
Other specified smoke, fire and flames	891
Nonstructural	159
Structural	116
Highly flammable materials or clothing	51
Unknown	21

# Firearm-Related Injuries by Age and Sex

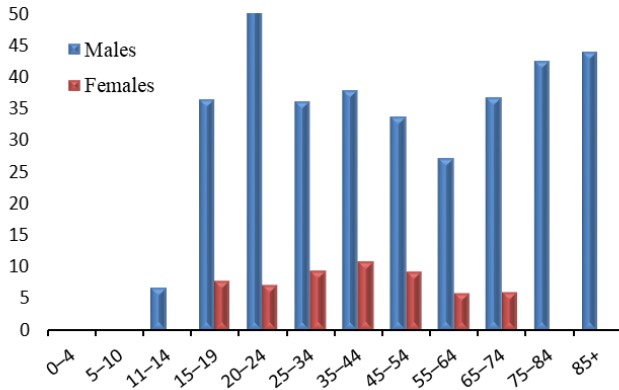
## Mortality

Total: 827 (18.0)<sup>^</sup>

Males: 682 (29.8)

Females: 145 (6.4)

Crude rate per 100,000 population



Age	Males	Females
0-4	*	0
5-10	*	0
11-14	10	0
15-19	55	11
20-24	79	10
25-34	110	27
35-44	108	30
45-54	94	25
55-64	77	17
65-74	84	15
75-84	46	##
85+	12	*

Counts

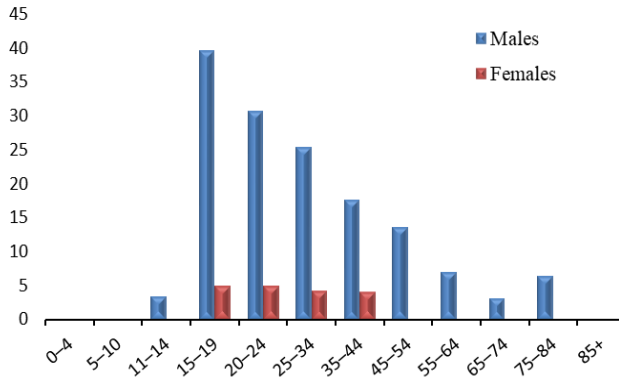
## Inpatient Hospitalizations

Total: 369 (8.6)

Males: 315 (14.5)

Females: 54 (2.6)

Crude rate per 100,000 population



Age	Males	Females
0-4	*	0
5-10	*	*
11-14	5	*
15-19	60	7
20-24	47	7
25-34	77	12
35-44	50	11
45-54	38	*
55-64	20	*
65-74	7	*
75-84	7	*
85+	*	0

Counts

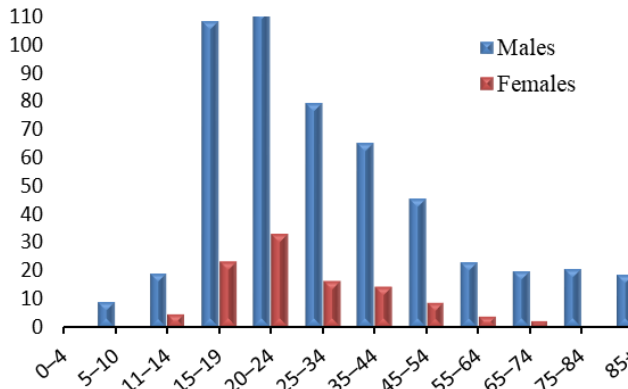
## Emergency Department Visits

Total: 1,291 (30.1)

Males: 1,071 (49.4)

Females: 220 (10.5)

Crude rate per 100,000 population



Age	Males	Females
0-4	5	*
5-10	13	*
11-14	28	6
15-19	164	33
20-24	171	47
25-34	241	47
35-44	186	40
45-54	126	23
55-64	65	10
65-74	45	5
75-84	22	*
85+	5	*

Counts

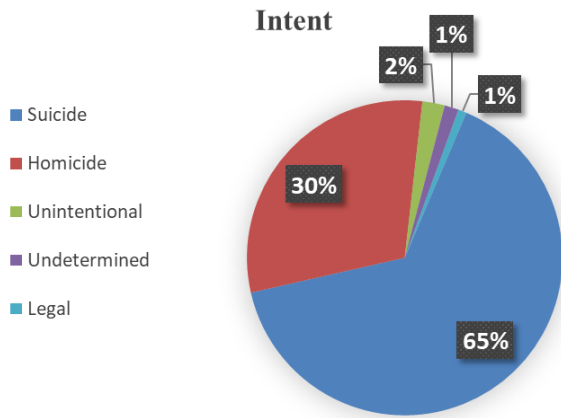
<sup>^</sup>Age-adjusted rate per 100,000 population  
 \*Suppressed per state data policies  
 Rates based on counts of 20 or less may be unstable.

##Suppressed to prevent indirect disclosure



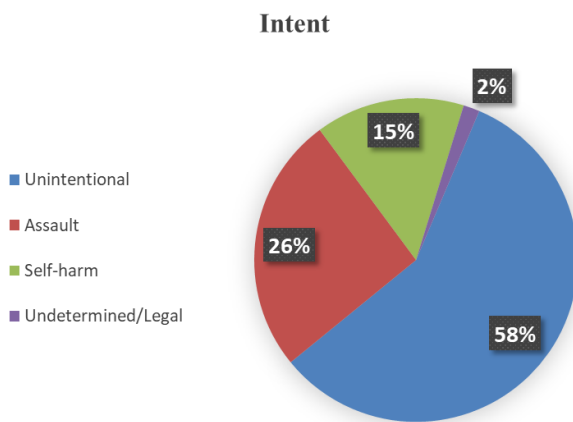
# Firearm-Related Injuries by Intent

## Mortality



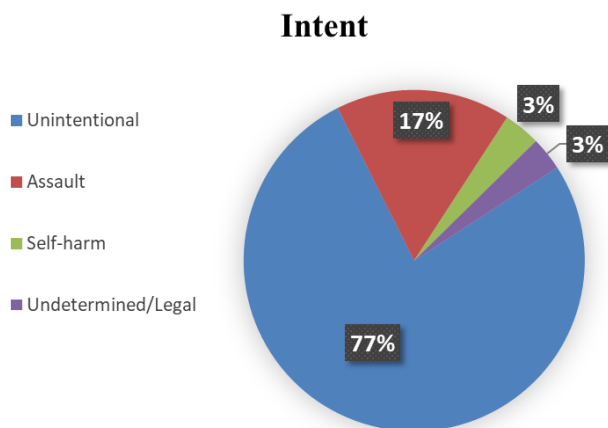
Intent	Count
Suicide	538
Homicide	251
Unintentional	19
Undetermined	12
Legal	7

## Inpatient Hospitalizations



Intent	Count
Unintentional	213
Assault	95
Self-harm	55
Undetermined/Legal	6

## Emergency Department Visits



Intent	Count
Unintentional	991
Assault	214
Self-harm	45
Undetermined/Legal	41

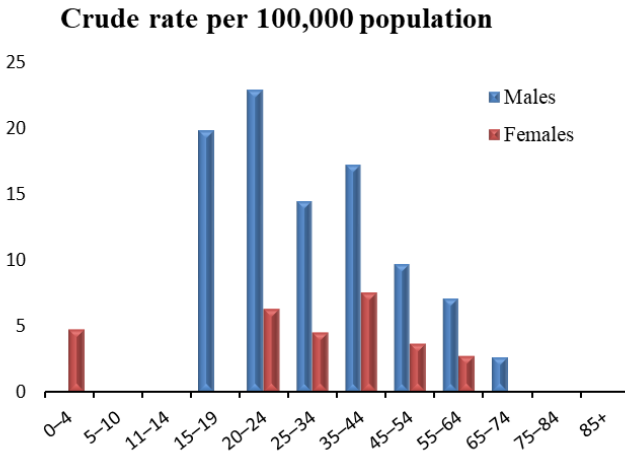
# Homicide and Assault by Age and Sex

## Mortality

Total: 305 (7.0)<sup>^</sup>

Males: 226 (10.4)

Females: 79 (3.5)



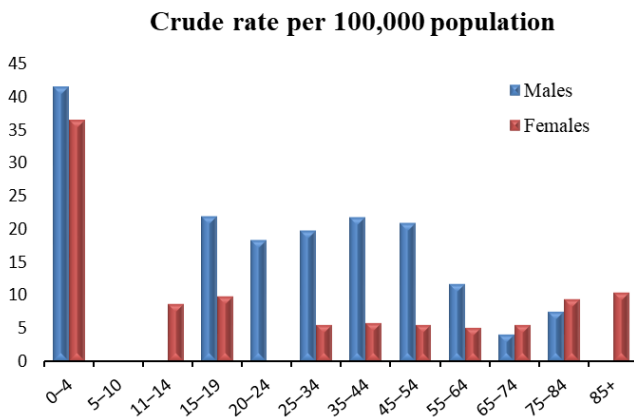
Age	Males	Females
0-4	*	6
5-10	*	*
11-14	*	0
15-19	30	*
20-24	35	9
25-34	44	13
35-44	49	21
45-54	27	10
55-64	20	8
65-74	6	*
75-84	*	*
85+	0	*

## Inpatient Hospitalizations

Total: 529 (10.3)

Males: 356 (14.5)

Females: 173 (5.9)



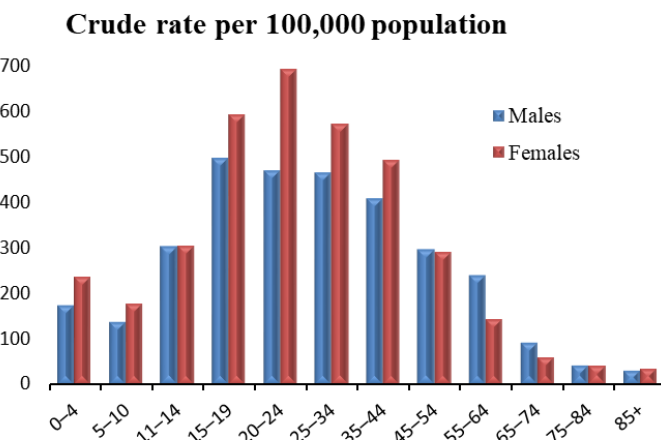
Age	Males	Females
0-4	56	47
5-10	*	*
11-14	*	12
15-19	33	14
20-24	28	*
25-34	60	16
35-44	62	16
45-54	58	15
55-64	33	15
65-74	9	14
75-84	8	13
85+	*	5

## Emergency Department Visits

Total: 13,978 (320.0)

Males: 6,652 (299.0)

Females: 7,326 (342.8)



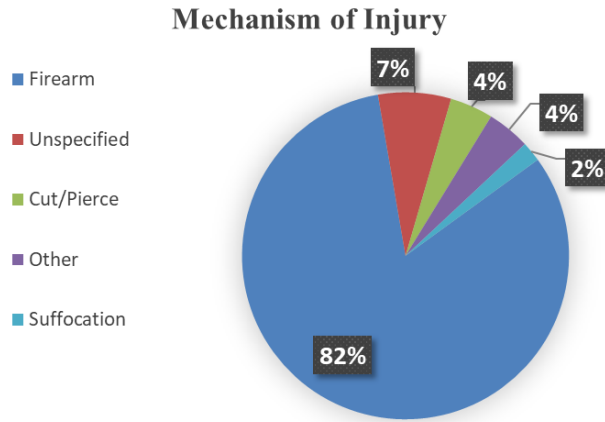
Age	Males	Females
0-4	231	304
5-10	197	242
11-14	446	424
15-19	747	852
20-24	715	996
25-34	1,408	1,672
35-44	1,158	1,388
45-54	820	802
55-64	673	424
65-74	205	151
75-84	44	55
85+	8	16

<sup>^</sup>Age-adjusted rate per 100,000 population  
 \*Suppressed per state data policies  
 Rates based on counts of 20 or less may be unstable.



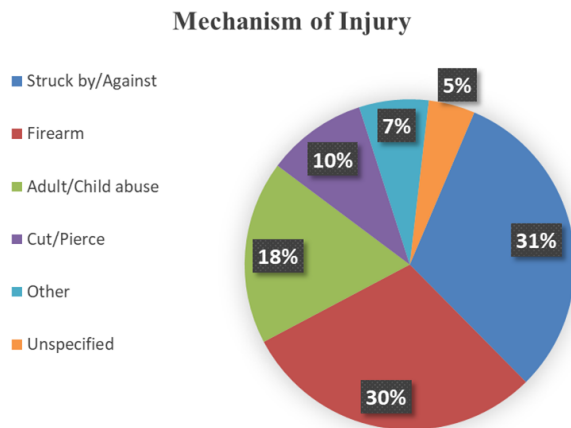
# Homicide and Assault by Mechanism of Injury

## Mortality



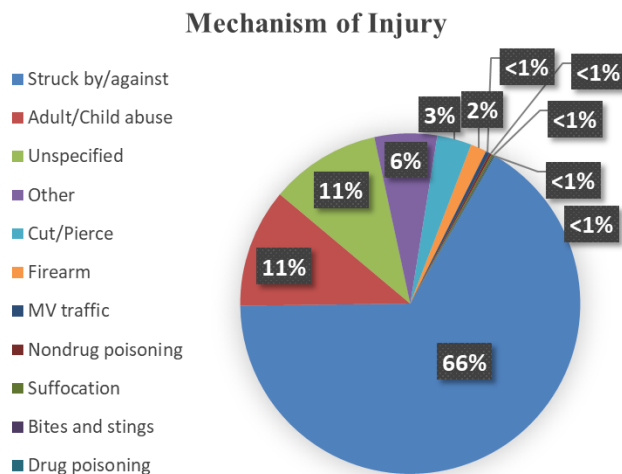
Mechanism of Injury	Count
Firearm	251
Unspecified	22
Cut/Pierce	13
Other	13
Suffocation	6

## Inpatient Hospitalizations



Mechanism of Injury	Count
Adult/Child abuse	165
Struck by/against	157
Firearm	95
Cut/Pierce	52
Unspecified	36
Other	24

## Emergency Department Visits



Mechanism of Injury	Count
Struck by/against	9,291
Adult/Child abuse	1,579
Unspecified	1,469
Other	832
Cut/Pierce	458
Firearm	214
MV traffic	51
Nondrug poisoning	31
Suffocation	27
Bites and stings	13
Drug poisoning	13

# Unintentional MV Traffic Crashes by Age and Sex

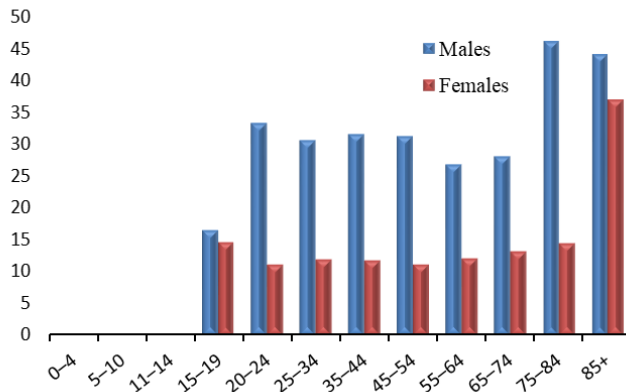
## Mortality

Total: 810 (17.2)<sup>^</sup>

Males: 559 (24.2)

Females: 251 (10.2)

Crude rate per 100,000 population



Age	Males	Females
0-4	*	*
5-10	*	*
11-14	*	*
15-19	25	21
20-24	51	16
25-34	93	35
35-44	90	33
45-54	87	31
55-64	76	36
65-74	64	34
75-84	50	20
85+	12	18

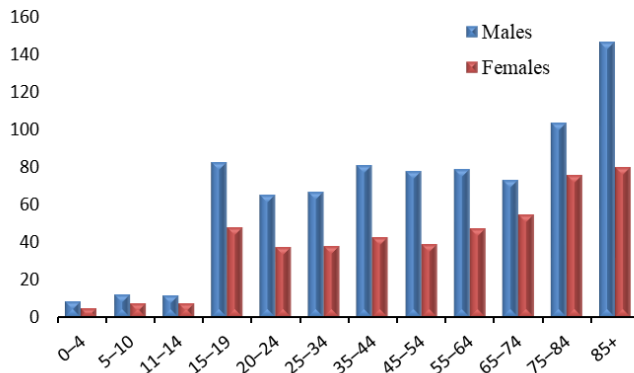
## Inpatient Hospitalizations

Total: 2,374 (50.0)

Males: 1,462 (63.5)

Females: 912 (36.8)

Crude rate per 100,000 population



Age	Males	Females
0-4	11	6
5-10	17	10
11-14	17	10
15-19	125	69
20-24	100	54
25-34	203	110
35-44	230	120
45-54	217	108
55-64	224	140
65-74	166	141
75-84	112	105
85+	40	39

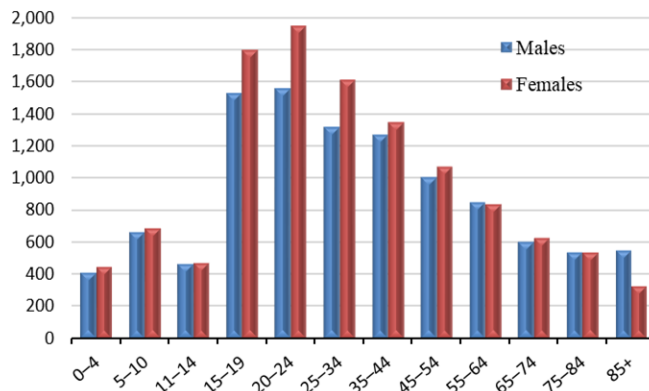
## Emergency Department Visits

Total: 45,636 (1,016.9)

Males: 21,709 (965.1)

Females: 23,927 (1,071.9)

Crude rate per 100,000 population



Age	Males	Females
0-4	550	569
5-10	952	937
11-14	680	650
15-19	2,299	2,578
20-24	2,378	2,798
25-34	3,993	4,688
35-44	3,601	3,781
45-54	2,784	2,957
55-64	2,390	2,470
65-74	1,360	1,603
75-84	573	739
85+	149	157

<sup>^</sup>Age-adjusted rate per 100,000 population

\*Suppressed per state data policies

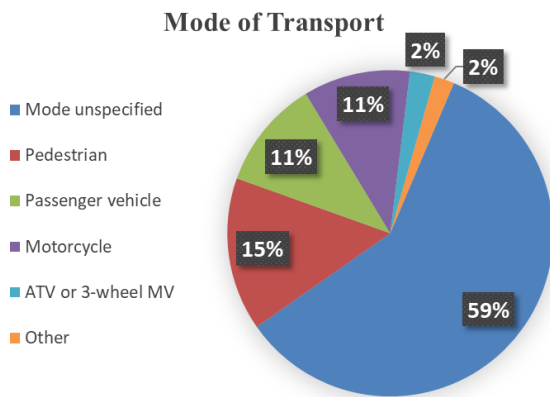
Rates based on counts of 20 or less may be unstable.





# Unintentional MV Traffic Crashes by Mode of Transport

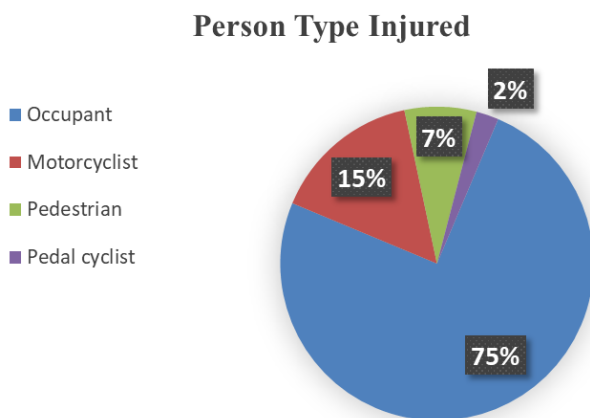
## Mortality



Mode of Transport	Count
Mode unspecified	477
Pedestrian	123
Passenger vehicle	88
Motorcycle	86
ATV or 3-wheel MV	20
Other	16

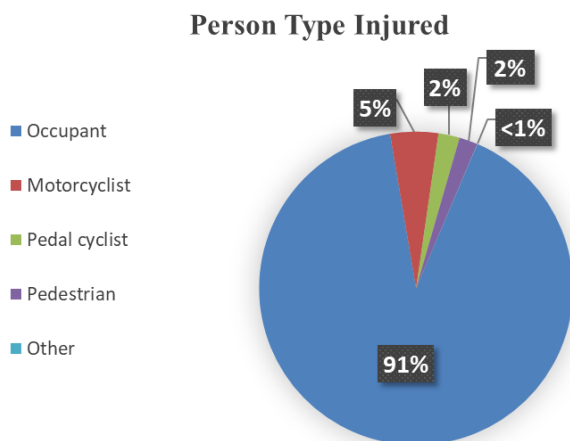
Note: "Other" includes persons whose mode of transport was a pedal cycle or a heavy transport vehicle.

## Inpatient Hospitalizations



Person Type Injured	Count
Occupant	1,778
Motorcyclist	365
Pedestrian	176
Pedal cyclist	55

## Emergency Department Visits



Person Type Injured	Count
Occupant	41,508
Motorcyclist	2,258
Pedal cyclist	996
Pedestrian	868
Other	6

Note: "Other" includes emergency department visits due to injuries related to persons boarding and alighting and unspecified occupants of a motor vehicle.

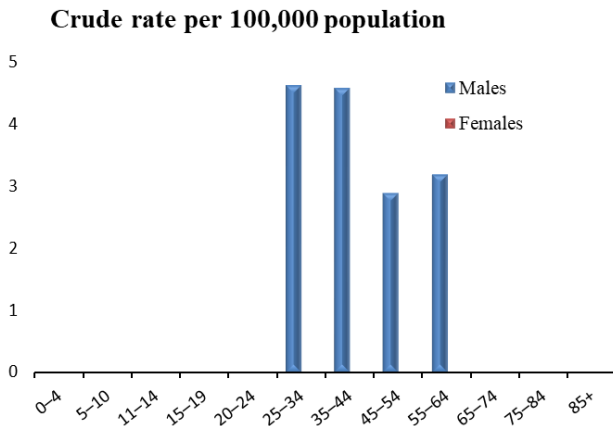
# Nondrug Poisoning by Age and Sex

## Mortality

Total: 66 (1.4)<sup>^</sup>

Males: 56 (2.5)

Females: 10 (0.4)



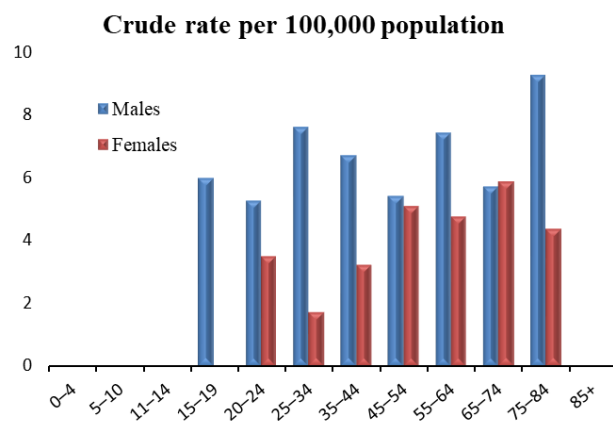
Age	Males	Females
0-4	0	0
5-10	0	0
11-14	0	0
15-19	*	*
20-24	*	0
25-34	14	*
35-44	13	*
45-54	8	*
55-64	9	*
65-74	*	*
75-84	*	0
85+	*	0

## Inpatient Hospitalizations

Total: 193 (4.0)

Males: 121 (5.2)

Females: 72 (2.8)



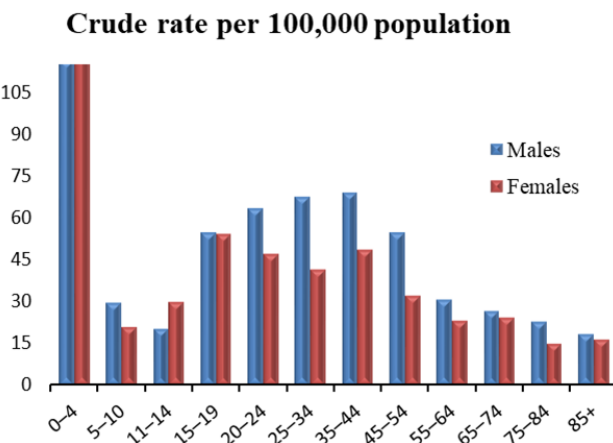
Age	Males	Females
0-4	*	0
5-10	*	0
11-14	*	*
15-19	9	*
20-24	8	5
25-34	23	5
35-44	19	9
45-54	15	14
55-64	21	14
65-74	13	15
75-84	10	6
85+	0	*

## Emergency Department Visits

Total: 2,027 (41.1)

Males: 1,142 (47.0)

Females: 885 (35.1)



Age	Males	Females
0-4	157	157
5-10	43	29
11-14	30	42
15-19	83	78
20-24	97	68
25-34	205	122
35-44	197	138
45-54	152	90
55-64	87	69
65-74	61	63
75-84	25	21
85+	5	8

<sup>^</sup>Age-adjusted rate per 100,000 population  
 \*Suppressed per state data policies  
 Rates based on counts of 20 or less may be unstable.



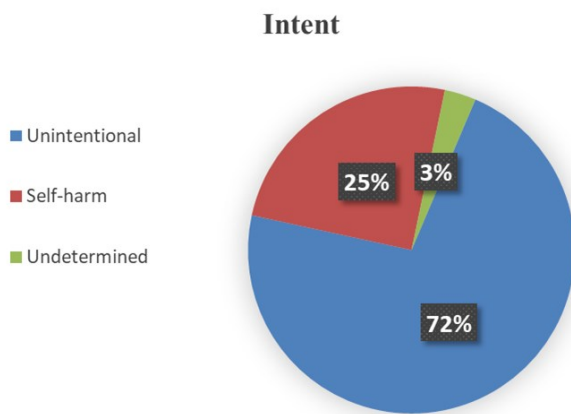
# Nondrug Poisoning by Intent

## Mortality

Intent	Count
Suicide	##
Undetermined	*

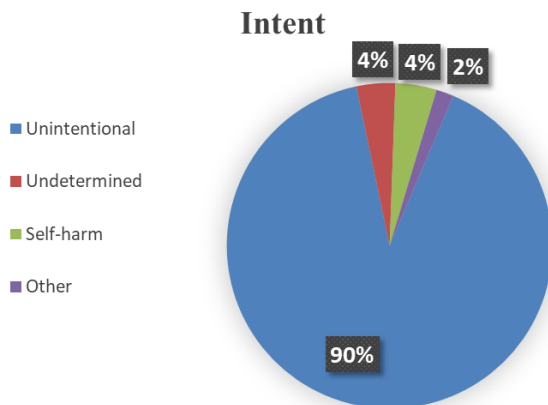
Note: Due to suppressed counts, a pie chart is not provided for fatal nondrug poisoning injury intents.

## Inpatient Hospitalizations



Intent	Count
Unintentional	139
Self-harm	48
Undetermined	6

## Emergency Department Visits



Intent	Count
Unintentional	1,831
Undetermined	83
Self-harm	78
Other	35

Note: "Other" includes emergency department visits due to assault and legal/war intents.

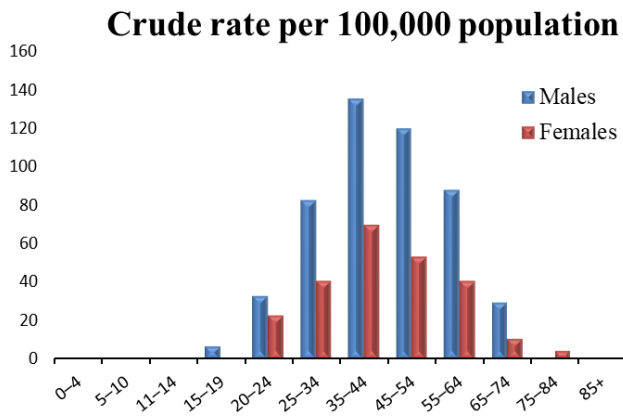
# Drug Poisoning by Age and Sex

## Mortality

Total: 2,019 (46.3)<sup>^</sup>

Males: 1,356 (62.0)

Females: 663 (30.5)



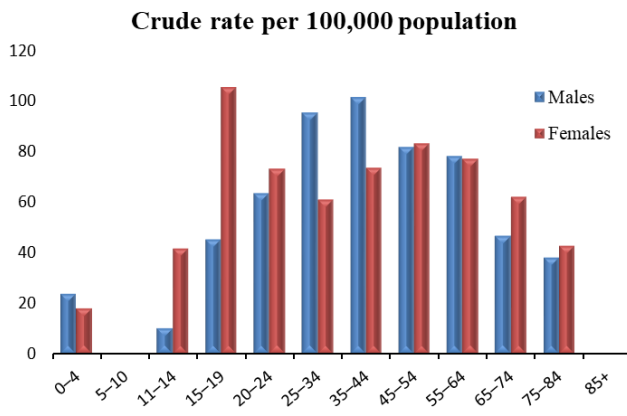
Age	Males	Females
0-4	*	*
5-10	0	0
11-14	*	*
15-19	10	*
20-24	50	33
25-34	251	119
35-44	385	196
45-54	333	147
55-64	250	120
65-74	67	28
75-84	*	6
85+	*	*

## Inpatient Hospitalizations

Total: 2,834 (61.3)

Males: 1,409 (61.9)

Females: 1,425 (60.7)



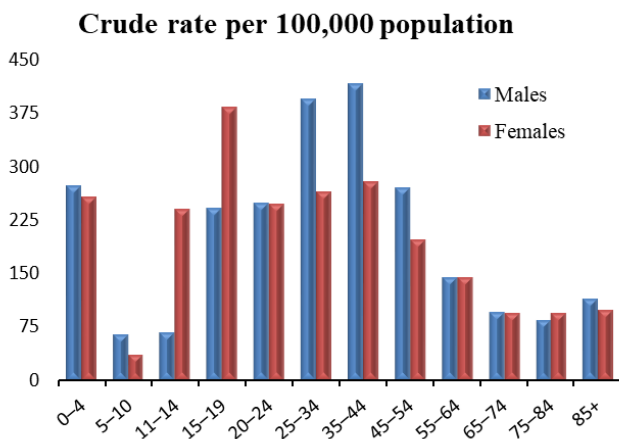
Age	Males	Females
0-4	32	23
5-10	##	*
11-14	15	58
15-19	68	151
20-24	97	105
25-34	289	177
35-44	288	207
45-54	227	229
55-64	221	228
65-74	106	159
75-84	41	59
85+	##	##

## Emergency Department Visits

Total: 9,775 (215.1)

Males: 5,198 (229.9)

Females: 4,577 (200.4)



Age	Males	Females
0-4	369	333
5-10	94	49
11-14	100	336
15-19	365	552
20-24	380	357
25-34	1,201	773
35-44	1,186	786
45-54	752	545
55-64	410	427
65-74	219	241
75-84	91	130
85+	31	48

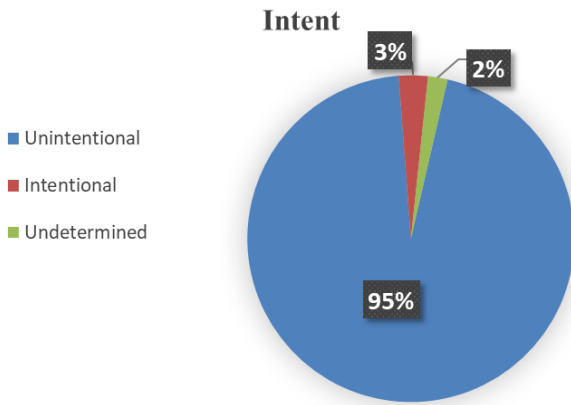
<sup>^</sup>Age-adjusted rate per 100,000 population  
 \*Suppressed per state data policies  
 Rates based on counts of 20 or less may be unstable.

##Suppressed to prevent indirect disclosure



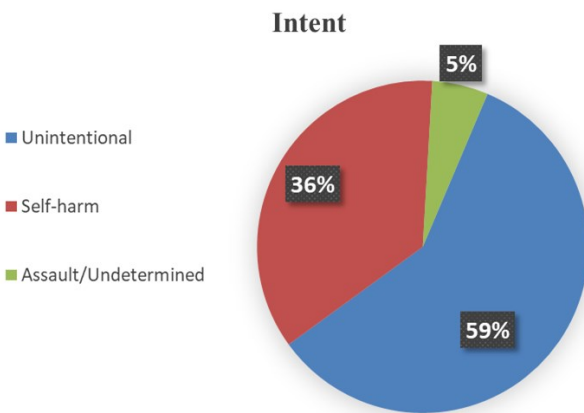
# Drug Poisoning by Intent

## Mortality



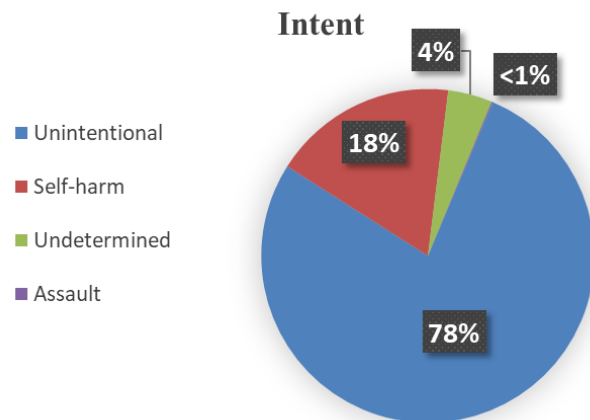
Intent	Count
Unintentional	1,922
Intentional	58
Undetermined	39

## Inpatient Hospitalizations



Intent	Count
Unintentional	1,661
Self-harm	1,018
Assault/Undetermined	155

## Emergency Department Visits



Intent	Count
Unintentional	7,587
Self-harm	1,755
Undetermined	420
Assault	13

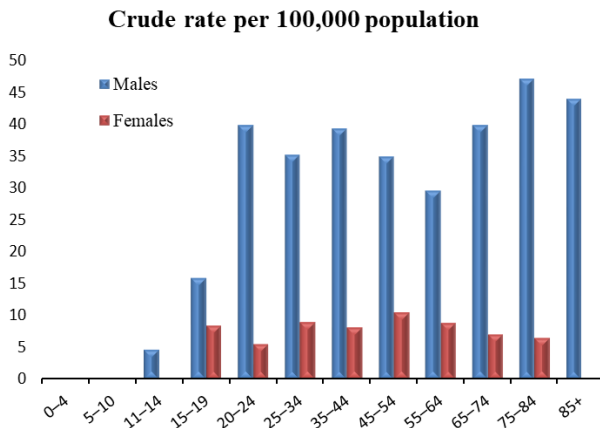
# Suicide and Self-Harm Injury by Age and Sex

## Mortality<sup>1</sup>

Total: 803 (17.2)<sup>^</sup>

Males: 646 (28.1)

Females: 157 (6.7)



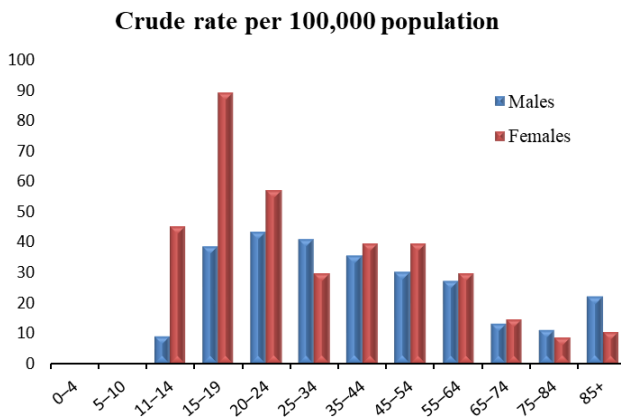
Age	Males	Females
0-4		
5-10		
11-14	7	*
15-19	24	12
20-24	61	8
25-34	107	26
35-44	112	23
45-54	97	29
55-64	84	26
65-74	91	18
75-84	51	9
85+	12	*

## Inpatient Hospitalizations<sup>1</sup>

Total: 1,292 (29.4)

Males: 570 (25.7)

Females: 722 (33.4)



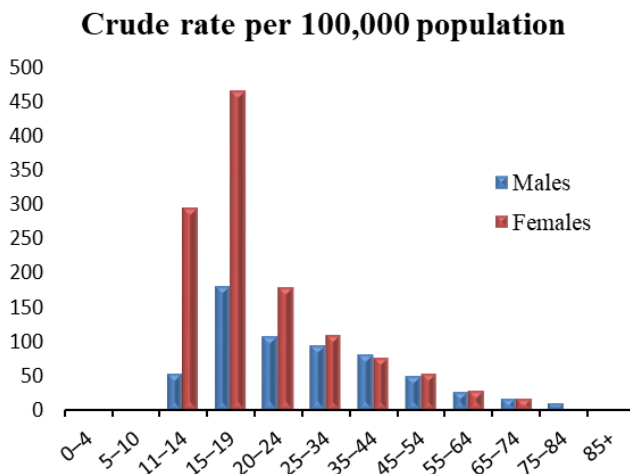
Age	Males	Females
0-4		
5-10		
11-14	13	63
15-19	58	128
20-24	66	82
25-34	124	87
35-44	101	111
45-54	83	109
55-64	77	88
65-74	30	37
75-84	12	12
85+	6	5

## Emergency Department Visits<sup>1</sup>

Total: 3,460 (82.6)

Males: 1,297 (60.8)

Females: 2,163 (105.7)



Age	Males	Females
0-4		
5-10		
11-14	79	412
15-19	274	670
20-24	164	259
25-34	288	318
35-44	232	216
45-54	139	146
55-64	75	82
65-74	36	42
75-84	10	##
85+	0	*

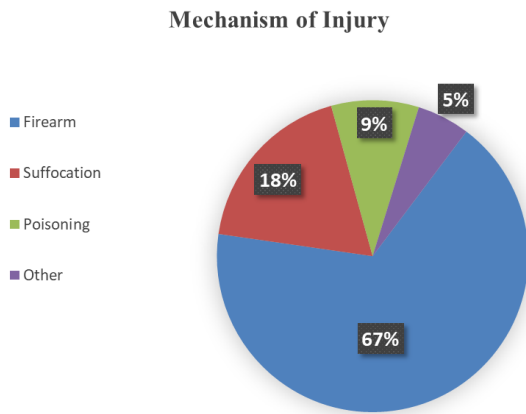
\*Suppressed per state data policies  
 Rates based on counts of 20 or less may be unstable.  
<sup>1</sup>Data for persons aged <10 years are not shown.

<sup>^</sup>Age-adjusted rate per 100,000 population  
 ##Suppressed to prevent indirect disclosure



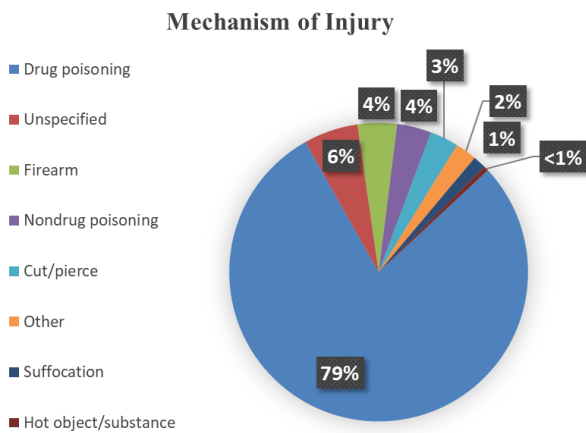
# Suicide and Self-Harm Injury by Mechanism of Injury

## Mortality



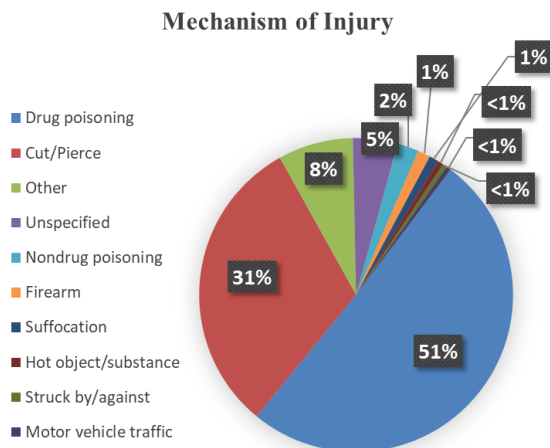
Mechanism of Injury	Count
Firearm	538
Suffocation	148
Poisoning	73
Other	44

## Inpatient Hospitalizations



Mechanism of Injury	Count
Drug poisoning	1,018
Unspecified	76
Firearm	55
Nondrug poisoning	48
Cut/pierce	40
Other	30
Suffocation	18
Hot object/substance	7

## Emergency Department Visits



Mechanism of Injury	Count
Drug poisoning	1,755
Cut/Pierce	1,077
Other	271
Unspecified	160
Nondrug poisoning	78
Firearm	45
Suffocation	34
Hot object/substance	21
Struck by/against	17
Motor vehicle traffic	16

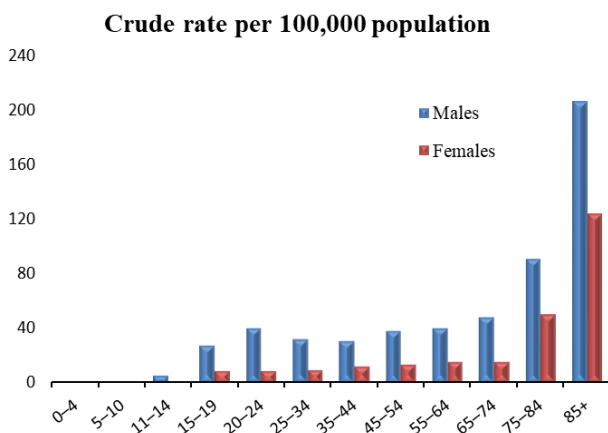
# Traumatic Brain Injury by Age and Sex

## Mortality

Total: 1,139 (23.1)<sup>^</sup>

Males: 790 (33.7)

Females: 349 (13.1)



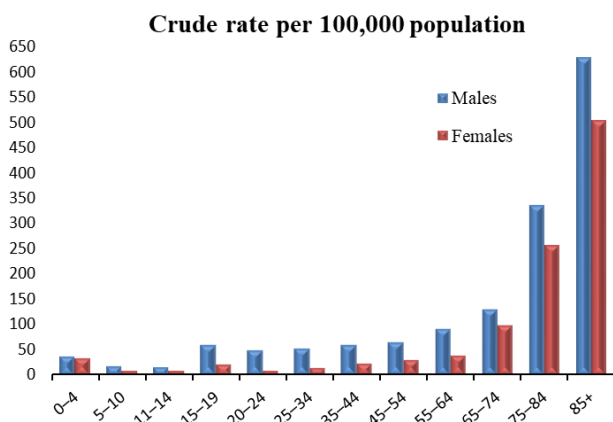
Age	Males	Females
0-4	##	*
5-10	*	*
11-14	8	0
15-19	41	13
20-24	61	13
25-34	97	28
35-44	88	35
45-54	106	38
55-64	114	46
65-74	110	39
75-84	98	69
85+	56	60

## Inpatient Hospitalizations

Total: 3,147 (60.0)

Males: 1,871 (77.8)

Females: 1,276 (43.1)



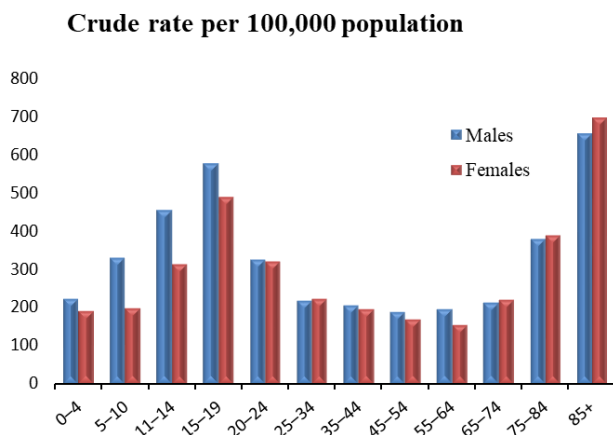
Age	Males	Females
0-4	50	44
5-10	27	12
11-14	23	12
15-19	92	30
20-24	75	14
25-34	159	43
35-44	172	66
45-54	181	83
55-64	260	118
65-74	298	253
75-84	363	356
85+	171	245

## Emergency Department Visits

Total: 11,824 (252.7)

Males: 6,177 (268.6)

Females: 5,647 (235.8)



Age	Males	Females
0-4	298	245
5-10	475	271
11-14	672	433
15-19	867	699
20-24	496	457
25-34	653	642
35-44	581	545
45-54	521	464
55-64	548	455
65-74	480	561
75-84	408	537
85+	178	338

<sup>^</sup>Age-adjusted rate per 100,000 population  
<sup>\*</sup>Suppressed per state data policies  
 Rates based on counts of 20 or less may be unstable.

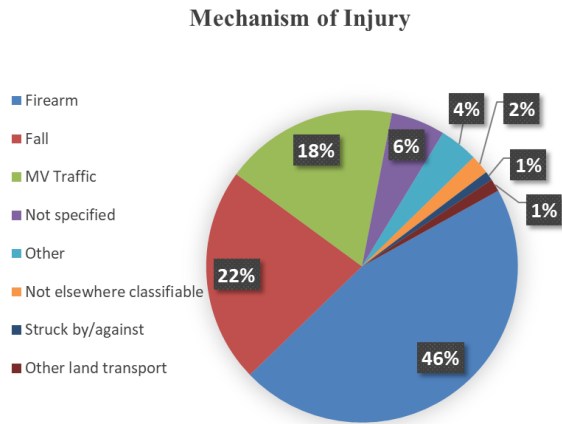
##Suppressed to prevent indirect disclosure





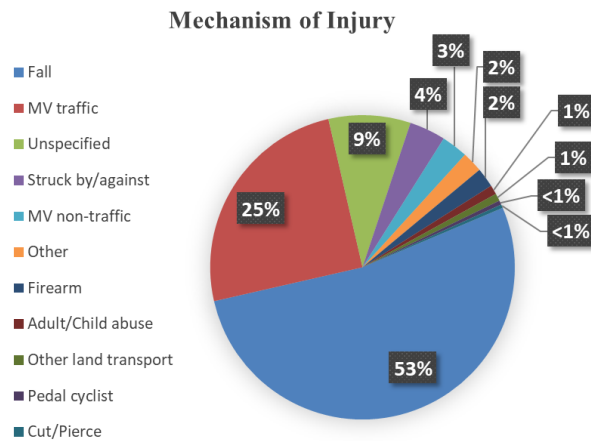
# Traumatic Brain Injury by Mechanism of Injury

## Mortality



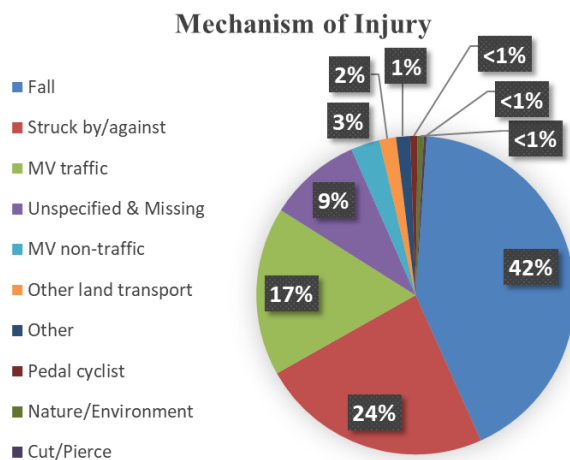
Mechanism of Injury	Count
Firearm	529
Fall	257
MV Traffic	208
Not specified	65
Other	46
Not elsewhere classifiable	23
Struck by/against	11
Other land transport	15

## Inpatient Hospitalizations



Mechanism of Injury	Count
Fall	1,662
MV traffic	786
Unspecified	274
Struck by/against	121
MV non-traffic	88
Other	69
Firearm	65
Adult/Child abuse	31
Other land transport	25
Pedal cyclist	14
Cut/Pierce	12

## Emergency Department Visits



Mechanism of Injury	Count
Fall	4,986
Struck by/against	2,785
MV traffic	2,025
Unspecified & Missing	1,117
MV non-traffic	346
Other land transport	201
Other	168
Pedal cyclist	89
Nature/Environment	74
Cut/Pierce	33