

KENTUCKY INJURY INDICATORS



2024

KENTUCKY VIOLENCE AND INJURY PREVENTION PROGRAM (KVIPP)

COOPERATIVE AGREEMENT No. NU17CE010064

KENTUCKY INJURY PREVENTION AND RESEARCH CENTER

NOVEMBER 2025



This page intentionally left blank.

ACKNOWLEDGMENTS

This report is supported by the Centers for Disease Control and Prevention of the U.S. Department of Health and Human Services (HHS) as part of cooperative agreement 5NU17CE010064 totaling \$1,250,000 with 0% financed with nongovernmental sources and by the Kentucky Cabinet for Health and Family Services (CHFS) as part of cooperative agreement PON2 728 2200003056. The contents are those of the author(s) and do not necessarily represent the official views of, nor and endorsement by, CHFS, CDC, HHS, or the U.S. government.

Prepared by

**Alaina Murphy
Ashley M. Bush**

Released by

Kentucky Violence and Injury Prevention Program
Kentucky Injury Prevention and Research Center
University of Kentucky College of Public Health
Lexington, Kentucky

Suggested citation: *Kentucky Injury Indicators, 2024*. Kentucky Injury Prevention and Research Center; November 2025.

This page intentionally left blank.

TABLE OF CONTENTS

Executive Summary.....	1
Data Sources and Methods.....	2
 10 Leading Causes of Injury by Age Group and Intent	
Definitions for Injury Data Matrices.....	4
Mortalities.....	5
Inpatient Hospitalizations	6
Emergency Department Visits.....	7
 Injury Indicators	
All Injuries.....	8
Unintentional Falls	10
Unintentional Fire/Burn-Related Injuries.....	12
Firearm-Related Injuries	14
Homicide and Assault	16
Unintentional Motor Vehicle Traffic Crashes	18
Nondrug Poisoning	20
Drug Poisoning	22
Suicide and Self-Harm Injury.....	24
Traumatic Brain Injury.....	26

Acronyms

CDC	Centers for Disease Control and Prevention
CSTE	Council of State and Territorial Epidemiologists
ED	emergency department
ICD	International Classification of Diseases
ICD-10-CM	International Classification of Diseases, Clinical Modifications – Tenth Revision
KIPRC	Kentucky Injury Prevention and Research Center
MV	motor vehicle
ATV	all-terrain vehicle
PCR	police collision report
TBI	traumatic brain injury

Executive Summary

Mortalities

There were 4,337 injury mortalities among Kentucky residents in 2024. Kentucky's overall age-adjusted injury mortality rate was 91.5 per 100,000 Kentucky resident population. The male and female age-adjusted rates were 129.6 and 54.9, respectively.

The leading mechanisms of injury mortality for Kentucky residents were *poisonings* (1,498), *firearms* (829), and *motor vehicle traffic crashes* (627). The age-adjusted mortality rates across these three injury mechanisms was two times higher for males than females. The majority of the poisonings were unintentional (90.9%), and were drug poisoning injuries (96.1%). The majority of firearm injury-related deaths were intentional (suicide 66% and homicide 30%). All of the motor vehicle traffic crashes were unintentional.

There were 1,085 mortalities from traumatic brain injuries (TBI), where TBI was reported as a cause of death on the death certificate alone or in combination with other injuries or conditions—an age-adjusted rate of 22.0 per 100,000. Males (34.6 per 100,000) had a higher age-adjusted rate than females (10.4 per 100,000) for TBI mortalities.

Inpatient Hospitalizations

There were 22,691 injury-related inpatient hospitalization encounters among Kentucky residents in 2024. The age-adjusted rate for injury-related hospitalizations per 100,000 Kentucky resident population was 432.4. The male and female age-adjusted rates were 424.1 and 427.7, respectively.

The leading mechanisms of injury-related hospitalizations were *falls* (12,166), *drug poisonings* (2,727), and *motor vehicle (MV) traffic crashes* (2,274). Of the falls and MV crashes, almost all were unintentional injuries (e.g., 99.9% of falls, and 99.9% of MV traffic crashes). More than over-half (55.4%) of drug poisonings were unintentional. The male and female age-adjusted rates for unintentional falls were 180.4 and 245.7, respectively. The majority (94.7%) of the unintentional fall hospitalizations occurred among residents aged 45 and older. Females (61.2 per 100,000) had a higher age-adjusted hospitalization rate for drug poisoning than males (55.5), and higher fall injury rates than males (245.7 and 180.4, respectively). Males (58.9 per 100,000) had a higher rate for unintentional MV traffic crash hospitalizations than females (36.8).

TBI (either TBI alone or in combination with other injuries) accounted for 3,166 hospitalizations. The majority of the TBI-related inpatient hospitalizations were *unintentional* (86.4%). *Falls* (57%) and *MV traffic crashes* (20%) were the leading mechanisms of TBI-related hospitalizations. Males (74.1 per 100,000) had a higher age-adjusted rate than females (46.2) for TBI-related hospitalizations.

Emergency Department Visits

There were 452,616 injury-related emergency department (ED) visits among Kentucky residents in 2024. The age-adjusted rate for injury-related ED visit discharges per 100,000 Kentucky resident population was 9,892.7. The male and female age-adjusted rates were 9,992.6 and 9,736.7, respectively.

The majority of the injury-related ED visits were unintentional (88.7%). The leading mechanisms of injury-related ED visits were *falls* (148,576), being *struck by/against an object or person* (54,976), *motor vehicle traffic crashes* (47,098), and *overexertion* (29,780). The majority of the falls were unintentional (99.9%). The male and female age-adjusted rates for unintentional fall-related ED visits were 2,638.0 and 3,352.2, respectively.

TBI (either TBI alone or in combination with other injuries) accounted for 11,891 ED visits (253.3 per 100,000). The majority of the TBI-related ED visits were unintentional (87.9%). The leading mechanisms of TBI-related ED visits were *falls* (44%), *struck by/against* (25%), and *MV traffic crashes* (16%). Males (269.5 per 100,000) had a higher age-adjusted rate than females (236.1) for TBI-related hospitalizations.

Data Sources and Methods

Data Sources

All data are provisional and subject to change. Injury indicators are based on the completeness of the external cause coding fields within the respective data source.

Population Data

United States Census Bureau. Annual County and Puerto Rico Municipio Resident Population Estimates by Selected Age Groups and Sex: April 1, 2020 to July 1, 2024 (CC-EST2024-AGESEX-[ST-FIPS]). U.S. Census Bureau, Population Division. Released June 2025.

Mortality Data

Kentucky Death Certificate Database, Kentucky Office of Vital Statistics, Cabinet for Health and Family Services

Inpatient Hospitalization Discharge Data

Kentucky Inpatient Hospitalization Claims Files, Office of Health Data and Analytics, Cabinet for Health and Family Services. Note: Counts represent encounters of care and could be greater than the number of individual patients treated at an acute care facility.

Emergency Department Visit Discharge Data

Kentucky Outpatient Services Database, Office of Health Data and Analytics, Cabinet for Health and Family Services. Note: Counts represent encounters of care and could be greater than the number of individual patients treated.

Methods

Injury-Related Mortality

The definitions for fatal injuries (deaths) used in this report correspond to the Centers for Disease Control and Prevention's (CDC's) "State Injury Indicators Report: Instructions for Preparing 2022 Data" that was released June 2024. An International Classification of Diseases, Tenth Revision [ICD-10] code in an underlying cause of death field was used to identify the mechanism and manner of fatal injuries. These injuries are severe enough to result in death, but only represent a proportion of the overall injury burden.

A mortality count of at least one but fewer than six is suppressed per state data policy.

PLEASE NOTE: Death counts in this report are based on state death certificate files and thus cannot be expected to match counts based on other sources. In particular, numbers of motor vehicle traffic deaths will not match those based on police collision reports (PCRs) because the two systems do not report on identical underlying populations. Death certificates capture deaths of Kentucky residents regardless of where they occur; PCRs capture deaths that occur on Kentucky roads only, regardless of state of residence. Similarly, counts of homicides and assaults in this report will not match counts based on police crime reports. These data sources should be viewed as complementary. There also exist specialized death certificate-based surveillance systems for injury mortalities at both the state (e.g., the Kentucky Violent Death Reporting System and Child Fatality Reviews) and national levels (e.g., CDC's Web-Based Injury Statistics Query and Reporting System [WISQARS] and Wide-ranging Online Data for Epidemiologic Research [WONDER]). Counts from those systems may not exactly match counts in this report due to differences in inclusion criteria, case definitions, the use of ancillary data sources for case identification, or other factors.

Injury-Related Inpatient Hospitalizations

Hospitalizations were limited to discharges from nonfederal, acute care, or inpatient facilities. The CDC's surveillance definition for injury hospitalizations was used; only initial encounters were included (indicated by a seventh character of "A" or missing in the International Classification of Diseases, Tenth Revision, Clinical Modification [ICD-10-CM] code). The injury subset for hospitalizations was created by selecting discharges having a principal diagnosis code.

The CDC external causes of injury matrix (updated January 2024) was used to categorize the injury visit by mechanism of injury and intent. Injury details were provided using external cause of morbidity codes, which are not required for discharge billing purposes; therefore, every injury hospitalization may not have this level of detail. Traumatic brain injury hospitalizations were defined using CDC's "State Injury Indicators Report: Instructions for Preparing 2022 Data".

Note that inpatient hospitalizations resulting in death are included in the total inpatient injury hospitalization count. An inpatient hospitalization count of at least one but fewer than five is suppressed per state data policy. These injuries are severe enough to result in hospitalization, but only represent a proportion of the overall injury burden.

Injury-Related Emergency Department Visits

The CDC's surveillance definition for injury emergency department visits was used; only initial encounters were included (seventh character of "A" or missing) in the ED data set using ICD-10-CM diagnosis codes or external cause codes. The injury subset for ED visits was used, applying an any mention approach.

The CDC's external causes of injury matrix (updated January 2024) was used to categorize the injury visit by mechanism of injury and intent. The external causes of morbidity, which were used to provide injury details, are not required for discharge billing purposes; therefore, every injury ED visit may not have this level of detail. Traumatic brain injury hospitalizations were defined using CDC's "State Injury Indicators Report: Instructions for Preparing 2022 Data".

Note that ED visits, including those resulting in inpatient hospitalization or death, are included in the total injury ED visit count. An ED visit count of at least one but fewer than five is suppressed per state data policy. These injuries are severe enough to require medical care in the ED, but only represent a proportion of the overall injury burden.

Calculation of Rates and Data Presentation

All data were limited to Kentucky residents.

Two types of rates are reported. Age-specific ("crude") rates were calculated by dividing the number of injury events occurring in a particular age group by the estimated number of Kentucky residents in that age group in 2024 and multiplying by 100,000. Age-adjusted rates were adjusted to the year 2000 standard population. Rates based on counts of 20 or fewer may be unstable.

Note that data are presented as aggregated counts. Certain counts have been suppressed because either the observed number of injury events is very small and not appropriate for publication or the count can be used to calculate the number in a count that has been suppressed per state data policies.

Definitions for Injury Data Matrices

Motor vehicle non-traffic (MV non-traffic)—Includes motor vehicle crashes that occurred somewhere other than on a public roadway,

Motor vehicle traffic (MV traffic)—Includes crashes that occurred on a public roadway and involved at least one motor vehicle. All persons injured in MV traffic incidents are counted here. Pedal cyclists and pedestrians who were struck by a motor vehicle would be counted here, but those who crashed on a public roadway without involvement of a motor vehicle would be counted elsewhere (see “Pedal cyclist, other” definition).

Natural/Environmental—Includes causes related to nature and the environment (insect bites and stings, animal bites, extreme weather, excessive heat or cold, etc.).

Other land transport—Includes motor vehicle crashes that occurred somewhere other than on a public roadway, rail injuries, etc. Does not include air or water injuries.

Other specified—Includes a variety of relatively low-incidence causes of injury grouped together. Includes causes not elsewhere classified; an external cause of injury code that is intended for use when no other code exists to adequately describe the mechanism and manner of injury.

Pedal cyclist, other—Includes pedal cyclists who crashed on a public roadway without involvement of a motor vehicle.

Poisoning—Includes drug and non-drug poisonings, unless otherwise noted.

Self-harm/Suicide—Includes injuries resulting from behaviors deliberately trying to harm or injure oneself. Data for persons aged <10 years are not shown, as it is difficult to determine suicide intent among younger children.

Tie—Indicates a tied count for a leading cause of injury-related mortality or morbidity.

Unspecified—Includes injuries for which an external code of injury either (a) was not specified or (b) was specified but did not indicate the mechanism or manner of injury.

10 Leading Causes of Injury-Related Mortality by Age Group and Intent, 2024 Kentucky Residents

Age Groups												
Rank	0-4	5-10	11-14	15-19	20-24	25-34	35-44	45-54	55-64	65-74	75-44	85+
1	Suffocation 9	Motor Vehicle Traffic 7	Firearm 7	Motor Vehicle Traffic 35	Motor Vehicle Traffic 54	Overexertion 229	Overexertion 374	Overexertion 356	Overexertion 264	Overexertion 96	Fall 154	Fall 188
2	Drowning 7			Firearm 35	Overexertion 46	Motor Vehicle Traffic 99	Motor Vehicle Traffic 83	Motor Vehicle Traffic 88	Motor Vehicle Traffic 96	Motor Vehicle Traffic 77	Firearm 63	Unspecified 114
3				Firearm 23	Firearm 44	Firearm 73	Firearm 76	Firearm 81	Firearm 93	Fall 73	Motor Vehicle Traffic 57	Suffocation 25
4				Overexertion 19	Firearm 36	Firearm 62	Firearm 40	Suffocation 29	Fall 31	Firearm 67	Unspecified 50	Motor Vehicle Traffic 22
5				Suffocation 8	Suffocation 7	Suffocation 31	Suffocation 36	Firearm 27	Firearm 25	Suffocation 38	Suffocation 22	Firearm 21
6						Fire/Burn 8	Fall 10	Overexertion 17	Overexertion 18	Unspecified 23	Overexertion 18	Other Specified 8
7						Overexertion 7	Overexertion 10	Fall 10	Suffocation 16	Fire/Burn 14	Firearm 9	
8							Fire/Burn 9	Other Specified 9	Fire/Burn 15	Firearm 11	Natural/ Environmental 9	
9							Overexertion 9	Suffocation 8	Suffocation 12	Other Land Transport 7	Fire/Burn 9	
10							Drowning 6	Drowning 7	Unspecified 10	Suffocation 7	Other Specified 6	

Injury Intent			
Unintentional	Suicide	Homicide	Undetermined

Counts less than 6 are not included in this matrix. Produced by the Kentucky Injury Prevention and Research Center, as bona fide agent for the Kentucky Department for Public Health, October 2025. This product was supported by grant numbers NU17CE010064 (Centers for Disease Control and Prevention) and 3048114413. Data source: Kentucky Death Certificate Database, Kentucky Office of Vital Statistics, Cabinet for Health and Family Services. Data are provisional and subject to change.



10 Leading Causes of Injury-Related Inpatient Hospitalizations by Age Group and Intent, 2024
Kentucky Residents

Age Groups												
Rank	0-4	5-10	11-14	15-19	20-24	25-34	35-44	45-54	55-64	65-74	75-44	85+
1	Abuse 150	Fall 42	Drug Poisoning 61	Drug Poisoning 178	Motor Vehicle Traffic 172	Motor Vehicle Traffic 323	Motor Vehicle Traffic 343	Fall 491	Fall 1,302	Fall 2,647	Fall 4,045	Fall 3,036
2	Drug Poisoning 74	Motor Vehicle Traffic 38	Motor Vehicle Nontraffic 31	Motor Vehicle Traffic 139	Drug Poisoning 103	Drug Poisoning 198	Fall 287	Motor Vehicle Traffic 305	Motor Vehicle Traffic 335	Motor Vehicle Traffic 288	Motor Vehicle Traffic 215	Motor Vehicle Traffic 77
3	Fall 52	Abuse 20	Fall 22	Motor Vehicle Nontraffic 47	Drug Poisoning 65	Drug Poisoning 188	Drug Poisoning 256	Drug Poisoning 262	Drug Poisoning 276	Drug Poisoning 183	Drug Poisoning 111	Struck by/Against 52
4	Fire/Burn 27	Motor Vehicle Nontraffic 13	Motor Vehicle Traffic 22	Firearm 42	Fall 44	Fall 160	Drug Poisoning 160	Drug Poisoning 161	Drug Poisoning 120	Struck by/Against 86	Unspecified 75	Unspecified 44
5	Motor Vehicle Traffic 17	Foreign Body 11	Abuse 12	Drug Poisoning 36	Firearm 29	Firearm 49	Drug Poisoning 41	Motor Vehicle Nontraffic 33	Unspecified 63	Unspecified 72	Struck by/Against 69	Foreign Body 34
6	Foreign Body 12	Drug Poisoning 9	Drug Poisoning 10	Fall 32	Motor Vehicle Nontraffic 23	Motor Vehicle Nontraffic 40	Motor Vehicle Nontraffic 34	Drug Poisoning 33	Struck by/Against 45	Drug Poisoning 58	Foreign Body 32	Drug Poisoning 31
7	Bite/Sling 8	Struck by/Against 9	Struck by/Against 8	Struck by/Against 13	Struck by/Against 10	Foreign Body 40	Firearm 33	Unspecified 31	Foreign Body 36	Foreign Body 40	Fire/Burn 22	Overexertion 13
8	Non-Drug Poisoning 5	Fire/Burn 7	Firearm 7	Firearm 11	Natural/ Environmental 9	Struck by/Against 23	Struck by/Against 32	Non-Drug Poisoning 31	Motor Vehicle Nontraffic 31	Natural/ Environmental 33	Motor Vehicle Nontraffic 22	Fire/Burn 6
9		Pedal Cyclist, Other 5	Unspecified 7	Abuse 11	Cut/Pierce 8	Fire/Burn 21	Foreign Body 31	Fire/Burn 28	Natural/ Environmental 31	Motor Vehicle Nontraffic 30	Natural/ Environmental 22	Cut/Pierce 5
10		Other Land Transport 5	Other Land Transport 5	Overexertion 8	Other Land Transport 8	Unspecified 19	Non-Drug Poisoning 25	Bite/Sling 27	Drug Poisoning 30	Bite/Sling 22	Overexertion 20	Drug Poisoning 5

Injury Intent

Unintentional

Self-Harm

Assault

Undetermined

Counts less than five are not included in this matrix. Counts represent encounters of care and could be greater than the number of individual patients treated. Produced by the Kentucky Injury Prevention and Research Center, as bona fide agent for the Kentucky Department for Public Health. October 2025. This product was supported by grants numbers NU17CE010064 (Centers for Disease Control and Prevention) and 3048114413. Data source: Kentucky Inpatient Hospitalization Claims Files, Office of Health Data and Analytics, Cabinet for Health and Family Services. Data are provisional and subject to change.

10 Leading Causes of Injury-Related Emergency Department Visits by Age Group and Intent, 2024 Kentucky Residents

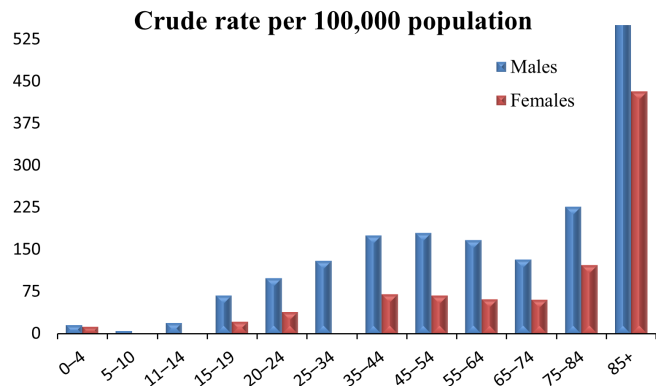
Age Groups												
Rank	0-4	5-10	11-14	15-19	20-24	25-34	35-44	45-54	55-64	65-74	75-44	85+
1	Fall 13,394	Fall 10,674	Fall 5,955	Fall 5,386	Motor Vehicle Traffic 5,360	Fall 9,323	Fall 10,308	Fall 13,449	Fall 18,481	Fall 22,408	Fall 21,847	Fall 12,883
2	Struck by/Against 3,882	Struck by/Against 5,353	Struck by/Against 4,667	Struck by/Against 5,138	Fall 4,419	Motor Vehicle Traffic 8,785	Motor Vehicle Traffic 7,649	Motor Vehicle Traffic 5,944	Motor Vehicle Traffic 5,021	Unspecified 3,129	Unspecified 2,084	Unspecified 874
3	Foreign Body 2,179	Bite/Sting 2,001	Overexertion 2,276	Motor Vehicle Traffic 4,855	Struck by/Against 3,372	Struck by/Against 5,422	Unspecified 5,301	Unspecified 4,789	Unspecified 4,144	Motor Vehicle Traffic 3,037	Struck by/Against 1,881	Struck by/Against 787
4	Unspecified 2,047	Motor Vehicle Traffic 1,992	Unspecified 1,754	Overexertion 3,241	Cut/Pierce 2,624	Unspecified 5,095	Overexertion 4,609	Overexertion 4,064	Struck by/Against 3,403	Struck by/Against 2,640	Motor Vehicle Traffic 1,479	Overexertion 309
5	Bite/Sting 2,043	Cut/Pierce 1,938	Cut/Pierce 1,441	Unspecified 2,621	Overexertion 2,468	Overexertion 4,869	Struck by/Against 4,582	Struck by/Against 3,794	Overexertion 3,133	Cut/Pierce 1,903	Overexertion 904	Motor Vehicle Traffic 308
6	Motor Vehicle Traffic 1,193	Unspecified 1,845	Motor Vehicle Traffic 1,389	Cut/Pierce 2,409	Unspecified 2,331	Cut/Pierce 4,643	Cut/Pierce 4,100	Cut/Pierce 3,416	Cut/Pierce 2,797	Overexertion 1,892	Cut/Pierce 860	Cut/Pierce 234
7	Cut/Pierce 1,077	Foreign Body 1,325	Bite/Sting 910	Struck by/Against 1,197	Bite/Sting 1,293	Bite/Sting 2,729	Bite/Sting 2,582	Bite/Sting 2,277	Bite/Sting 1,969	Bite/Sting 1,397	Bite/Sting 671	Foreign Body 216
8	Other Specified 863	Overexertion 1,300	Motor Vehicle Nontraffic 627	Bite/Sting 1,115	Struck by/Against 1,250	Struck by/Against 2,307	Struck by/Against 1,819	Struck by/Against 1,306	Foreign Body 913	Foreign Body 723	Foreign Body 460	Bite/Sting 166
9	Drug Poisoning 752	Other Specified 1,019	Other Specified 616	Motor Vehicle Nontraffic 909	Other Specified 692	Other Specified 1,304	Drug Poisoning 1,207	Foreign Body 936	Struck by/Against 732	Other Specified 436	Natural/ Environmental 261	Natural/ Environmental 74
10	Overexertion 715	Pedal Cyclist, Other 550	Struck by/Against 560	Other Specified 721	Foreign Body 547	Drug Poisoning 1,136	Other Specified 1,107	Other Specified 891	Other Specified 670	Natural/ Environmental 404	Drug Poisoning 198	Drug Poisoning 70

Injury Intent			
Unintentional	Self-Harm	Assault	Undetermined

Counts represent encounters of care and could be greater than the number of individual patients treated. Produced by the Kentucky Injury Prevention and Research Center, as bona fide agent for the Kentucky Department for Public Health. October 2025. This product was supported by grant numbers NU17CE010064 (Centers for Disease Control and Prevention) and 3048114413. Data source: Kentucky Outpatient Services Database Files, Office of Health Data and Analytics, Cabinet for Health and Family Services. Data are provisional and subject to change.

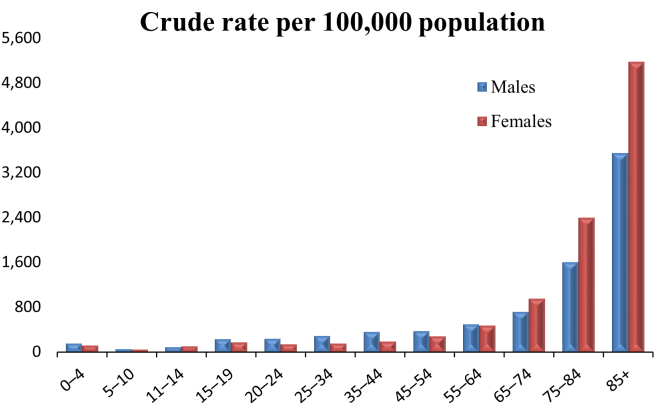
All Injuries by Age and Sex

Mortality Total: 4,337 (91.5)[^] Males: 2,947 (129.6) Females: 1,390 (54.9) **INJURY COUNT**



Age	Males	Females
0-4	22	17
5-10	9	##
11-14	23	*
15-19	105	32
20-24	156	58
25-34	405	149
35-44	508	203
45-54	503	190
55-64	469	181
65-74	306	159
75-84	257	176
85+	184	215

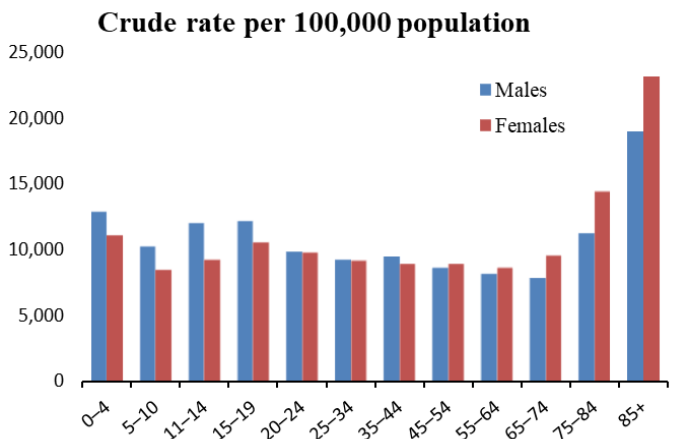
Inpatient Hospitalizations Total: 22,691 (432.4)



Males: 10,105 (424.1) Females: 12,586 (427.7)

Age	Males	Females
0-4	212	160
5-10	99	87
11-14	110	116
15-19	362	263
20-24	376	208
25-34	908	471
35-44	1,050	561
45-54	1,063	797
55-64	1,411	1,396
65-74	1,671	2,500
75-84	1,820	3,449
85+	1,023	2,578

Emergency Department Visits Total: 452,616 (9,892.7) Males 223,610 (9,992.6) Females: 229,006 (9,736.7)

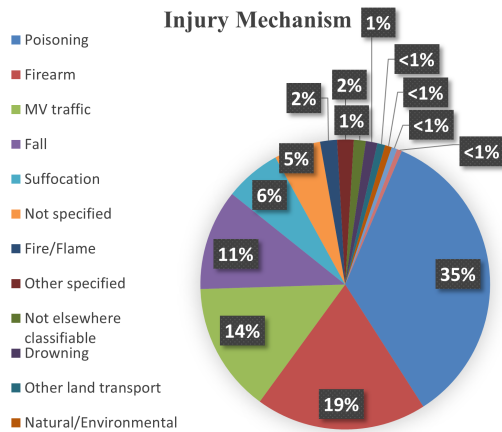


Age	Males	Females
0-4	17,575	14,475
5-10	17,902	14,147
11-14	14,397	10,362
15-19	18,665	15,442
20-24	15,496	14,437
25-34	28,798	27,292
35-44	27,400	25,597
45-54	24,212	24,883
55-64	22,874	25,330
65-74	18,112	24,795
75-84	12,712	20,716
85+	5,467	11,530

[^]Age-adjusted rate per 100,000 population
Rates based on counts of 20 or less may be unstable.
##Suppressed to prevent indirect disclosure

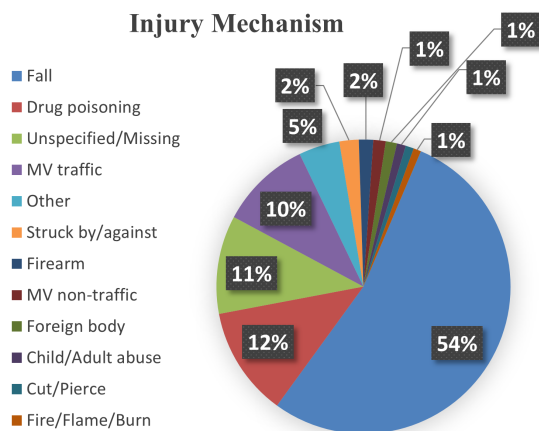


Mortality



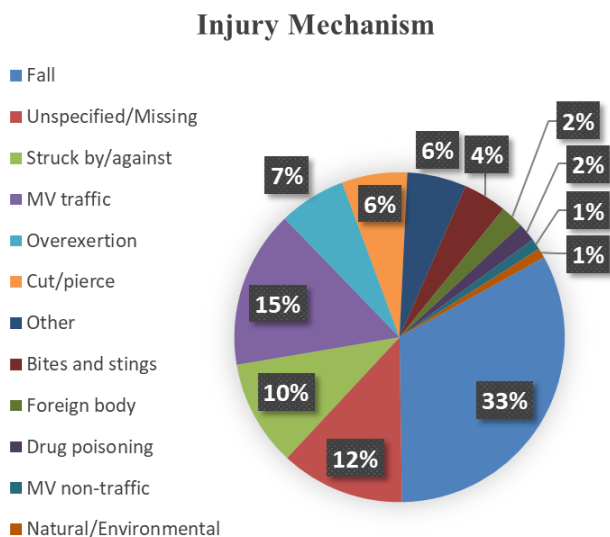
Injury Mechanism	Count
Poisoning	1,498
Firearm	829
MV traffic	627
Fall	487
Suffocation	272
Not specified	226
Fire/Flame	82
Other specified	80
Not elsewhere classifiable	58
Drowning	56
Other land transport	38
Natural/Environmental	33
Cut/Pierce	27
Struck by/against	24

Inpatient Hospitalizations



Injury Mechanism	Count
Fall	12,166
Drug poisoning	2,727
Unspecified/Missing	2,454
MV traffic	2,274
Other	1,022
Struck by/against	484
Firearm	358
MV non-traffic	308
Foreign body	281
Child/Adult abuse	223
Cut/Pierce	204
Fire/Flame/Burn	190

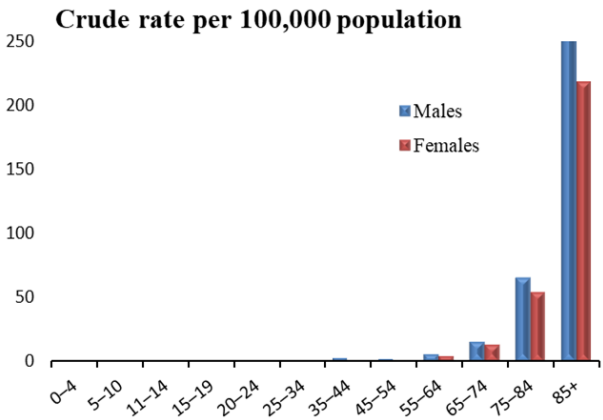
Emergency Department Visits



Injury Mechanism	Count
Fall	148,576
Unspecified/Missing	69,915
Struck by/against	54,976
MV traffic	47,098
Overexertion	29,780
Cut/pierce	29,017
Other	26,190
Bites and stings	19,309
Foreign body	10,401
Drug poisoning	8,174
MV non-traffic	4,944
Natural/Environmental	4,236

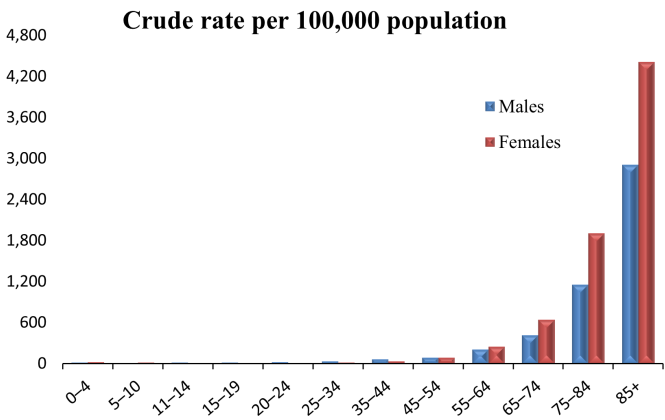
Unintentional Falls by Age and Sex

Mortality Total: 476 (8.9)^ Males: 233 (10.5) Females: 243 (7.6)



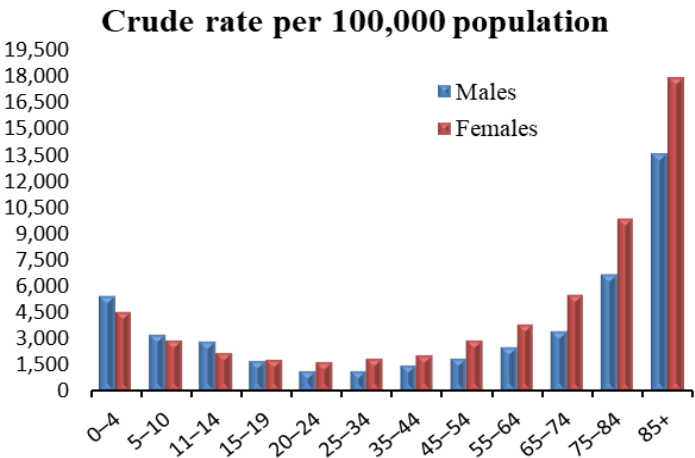
INJURY COUNT		
Age	Males	Females
0-4	0	0
5-10	0	0
11-14	*	0
15-19	*	0
20-24	*	0
25-34	*	*
35-44	9	*
45-54	8	*
55-64	17	14
65-74	37	36
75-84	75	79
85+	79	109

Inpatient Hospitalization Total: 12,160 (218.8) Males: 4,357 (180.4) Females 7,803 (245.7)



Age	Males	Females
0-4	23	29
5-10	20	22
11-14	17	5
15-19	20	12
20-24	32	12
25-34	110	50
35-44	190	97
45-54	253	238
55-64	577	725
65-74	967	1,680
75-84	1,309	2,736
85+	839	2,197

Emergency Department Visits Total: 148,527 (3,017.7) Males: 61,329 (2,638.0) Females: 87,198 (3,352.2)



Age	Males	Females
0-4	7,461	5,933
5-10	5,724	4,950
11-14	3,448	2,507
15-19	2,710	2,676
20-24	1,866	2,553
25-34	3,759	5,564
35-44	4,273	6,035
45-54	5,308	8,141
55-64	7,206	11,275
65-74	8,047	14,361
75-84	7,604	14,243
85+	3,923	8,960

^Age-adjusted rate per 100,000 population

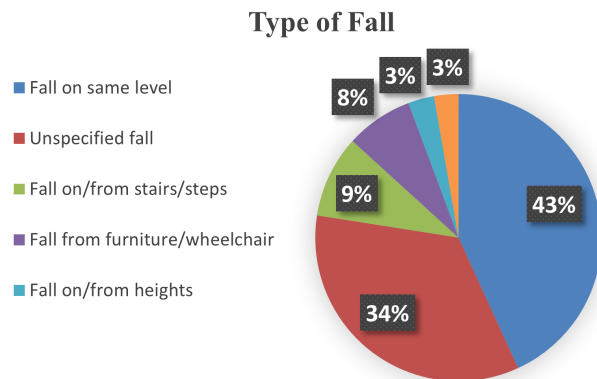
*Suppressed per state data policies

Rates based on counts of 20 or less may be unstable.



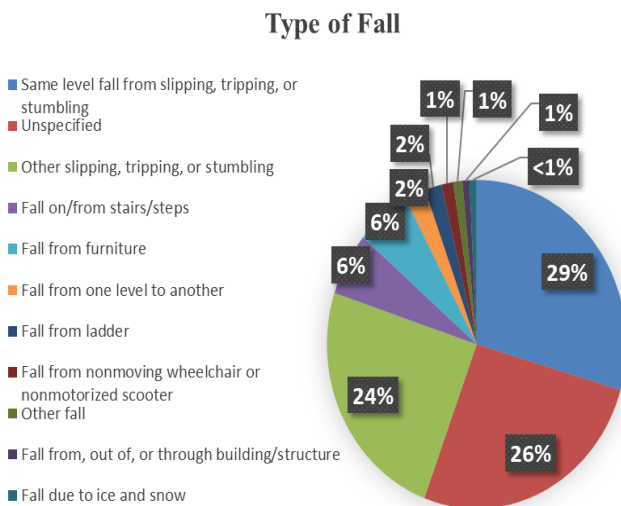
Unintentional Falls by Type of Fall

Mortality

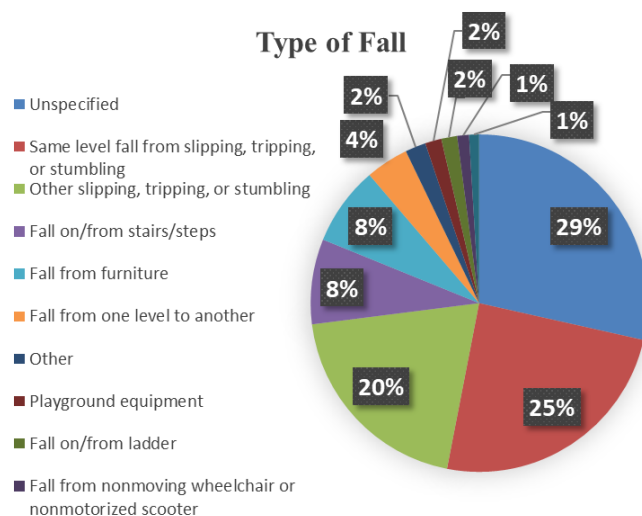


Type of Fall	Count
Fall on same level	205
Unspecified fall	164
Fall on/from stairs/steps	44
Fall from furniture/wheelchair	36
Fall on/from heights	14
Other fall from one level to another	13

Inpatient Hospitalizations



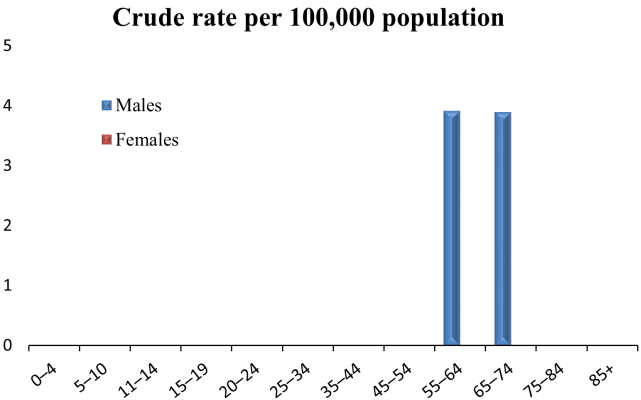
Type of Fall	Count
Same level fall from slipping, tripping, or stumbling	3,587
Unspecified	3,185
Other slipping, tripping, or stumbling	2,963
Fall on/from stairs/steps	755
Fall from furniture	718
Fall from one level to another	271
Fall from ladder	220
Fall from nonmoving wheelchair or nonmotorized scooter	155
Other fall	120
Fall from, out of, or through building/structure	93
Fall due to ice and snow	93



Type of Fall	Count
Unspecified	42,341
Same level fall from slipping, tripping, or stumbling	36,463
Other slipping, tripping, or stumbling	29,606
Fall on/from stairs/steps	12,113
Fall from furniture	11,267
Fall from one level to another	6,105
Other	2,944
Playground equipment	2,332
Fall on/from ladder	2,254
Fall from nonmoving wheelchair or nonmotorized scooter	1,682
Other fall on same level due to collision with another person	1,420

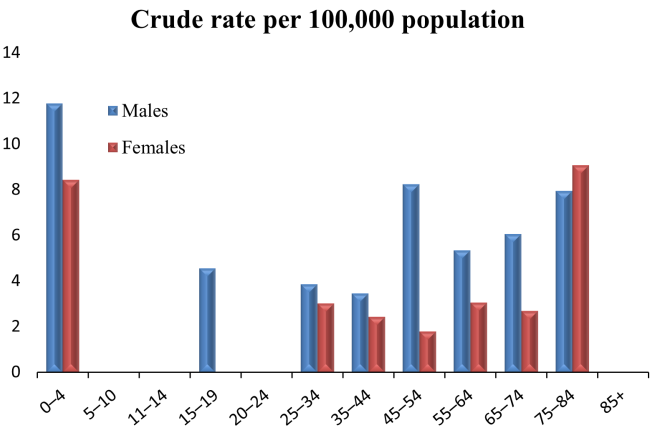
Unintentional Fire/Burn-Related Injuries by Age and Sex

Mortality Total: 69 (1.3)[^] Males: 41 (1.6) Females: 28 (1.0)



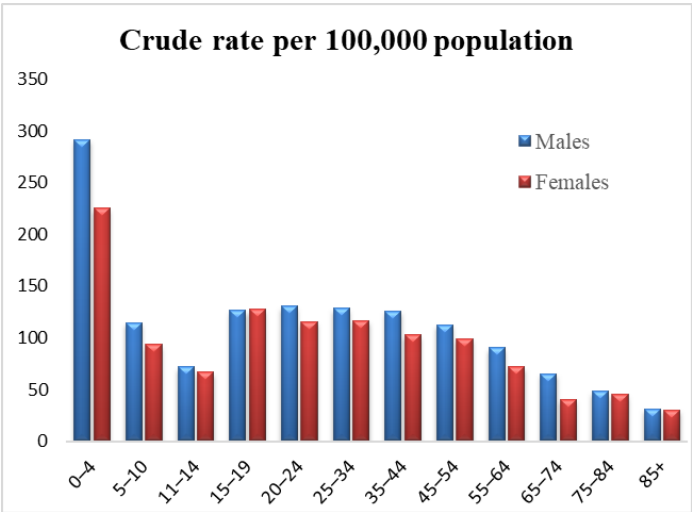
INJURY COUNT		
Age	Males	Females
0-4	*	*
5-10	*	0
11-14	0	0
15-19	*	0
20-24	0	0
25-34	*	*
35-44	*	*
45-54	*	*
55-64	11	*
65-74	9	*
75-84	*	*
85+	*	*

Inpatient Hospitalization Total: 182 (3.4) Males: 112 (4.3) Females 70 (2.4)



Age	Males	Females
0-4	16	11
5-10	*	*
11-14	*	0
15-19	7	0
20-24	*	0
25-34	12	9
35-44	10	7
45-54	23	5
55-64	15	9
65-74	14	7
75-84	9	13
85+	*	##

Emergency Department Visits Total: 4,828 (98.1) Males: 2,630 (105.5) Females: 2,198 (90.7)



Age	Males	Females
0-4	397	294
5-10	201	156
11-14	86	75
15-19	194	186
20-24	205	171
25-34	399	347
35-44	364	295
45-54	315	276
55-64	254	212
65-74	151	106
75-84	55	65
85+	9	15

[^]Age-adjusted rate per 100,000 population

*Suppressed per state data policies

Rates based on counts of 20 or less may be unstable.

##Suppressed to prevent indirect disclosure



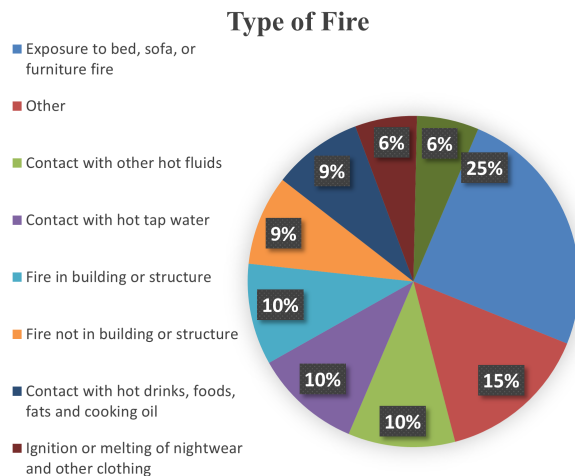
Unintentional Fire/Burn-Related Injuries by Type of Fire/Burn

Mortality

Type of Fire/Burn	Count
Structural fire	64
Heat/Hot Substances	*
Unspecified fire	*

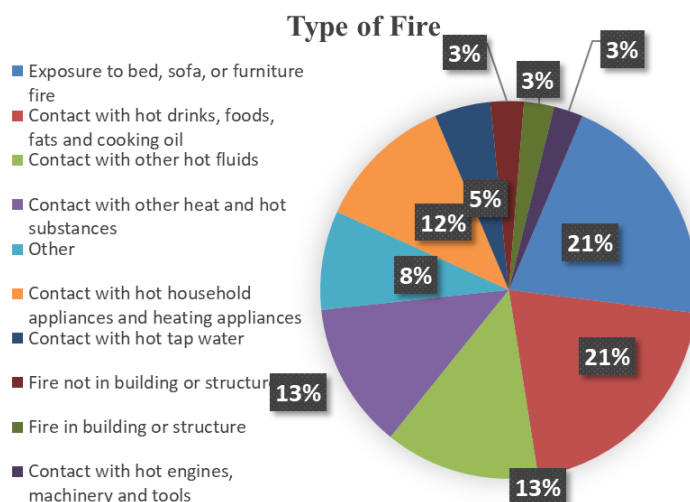
Note: Due to suppressed counts, a pie chart is not provided for fatal unintentional fire-related injuries.

Inpatient Hospitalizations



Type of Fire	Count
Exposure to bed, sofa, or furniture fire	45
Other	27
Contact with other hot fluids	19
Contact with hot tap water	19
Fire in building or structure	18
Fire not in building or structure	16
Contact with hot drinks, foods, fats and cooking oil	16
Ignition or melting of nightwear and other clothing	11
Contact with hot household appliances and heating	11

Emergency Department Visits

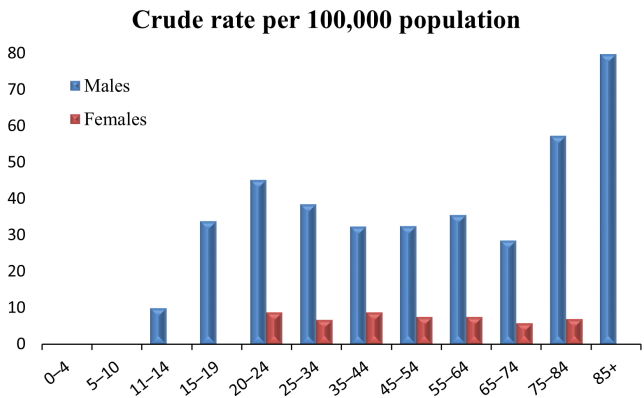


Type of Fire/Burn	Count
Exposure to bed, sofa, or furniture fire	993
Contact with hot drinks, foods, fats and cooking oil	992
Contact with other hot fluids	642
Contact with other heat and hot substances	604
Other	409
Contact with hot household appliances and heating	572
Contact with hot tap water	232
Fire not in building or structure	138
Fire in building or structure	125
Contact with hot engines, machinery and tools	121

Firearm-Related Injuries by Age and Sex

Mortality Total: 829 (17.8)[^] Males: 696 (30.4) Females: 133 (5.7)

INJURY COUNT

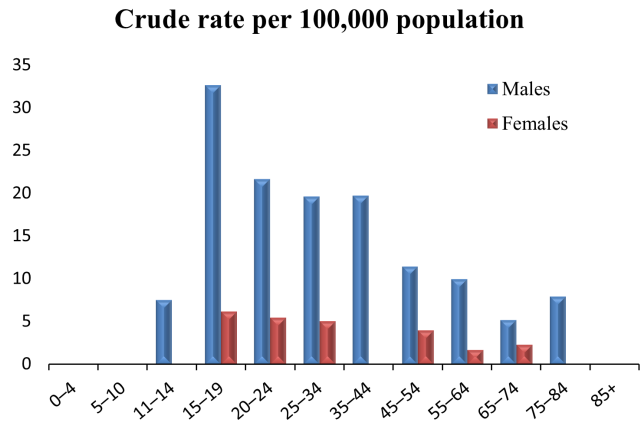


Age	Males	Females
0-4	*	0
5-10	*	0
11-14	12	0
15-19	52	##
20-24	71	13
25-34	120	20
35-44	94	25
45-54	91	21
55-64	100	22
65-74	66	15
75-84	65	10
85+	23	0

Inpatient Hospitalization Total: 358 (8.2)

Males: 297 (13.6)

Females 61 (2.6)

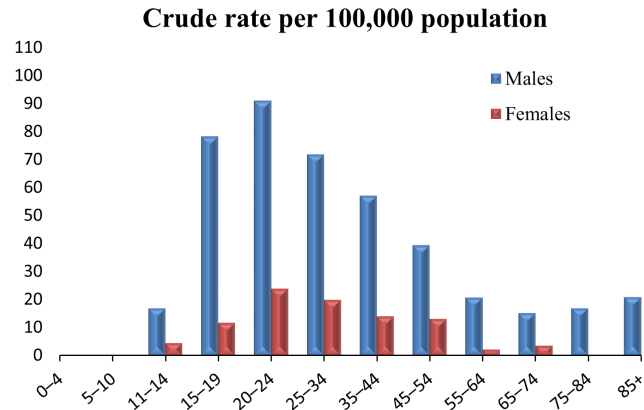


Age	Males	Females
0-4	*	*
5-10	0	0
11-14	9	*
15-19	50	9
20-24	34	8
25-34	61	15
35-44	57	*
45-54	32	11
55-64	28	5
65-74	12	6
75-84	9	*
85+	*	*

Emergency Department Visits Total: 1,122 (26.2)

Males: 907 (41.9)

Females: 215 (10.2)



Age	Males	Females
0-4	*	*
5-10	##	*
11-14	20	5
15-19	120	17
20-24	143	35
25-34	223	59
35-44	165	40
45-54	110	36
55-64	58	6
65-74	35	9
75-84	19	*
85+	6	*

[^]Age-adjusted rate per 100,000 population

*Suppressed per state data policies

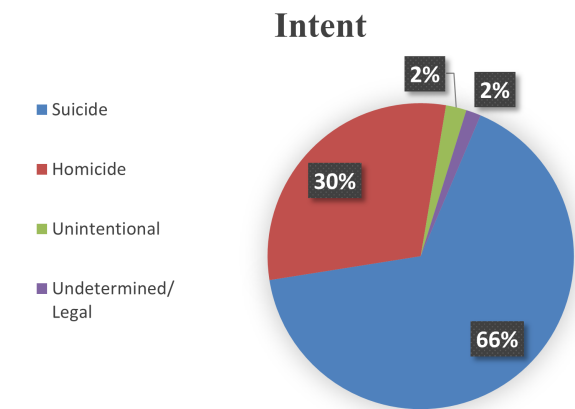
Rates based on counts of 20 or less may be unstable.

##Suppressed to prevent indirect disclosure



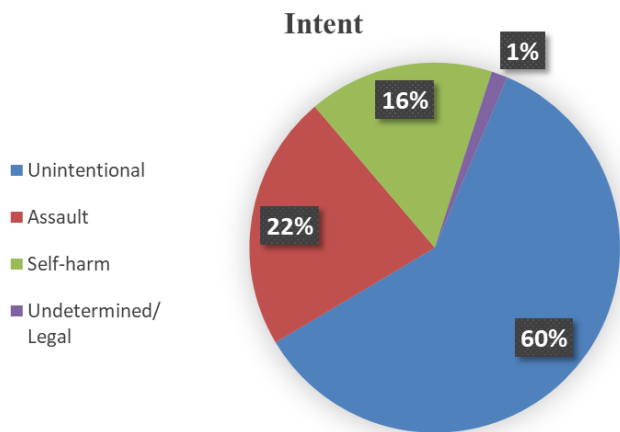
Firearm-Related Injuries by Intent

Mortality



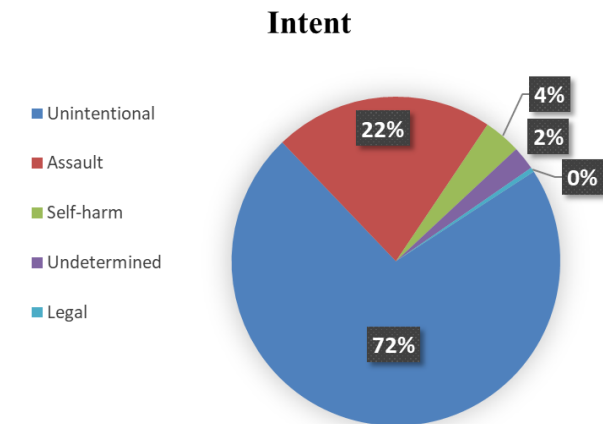
Intent	Count
Suicide	548
Homicide	250
Unintentional	18
Undetermined/Legal	13

Inpatient Hospitalizations



Intent	Count
Unintentional	215
Assault	80
Self-harm	58
Undetermined/Legal	5

Emergency Department Visits

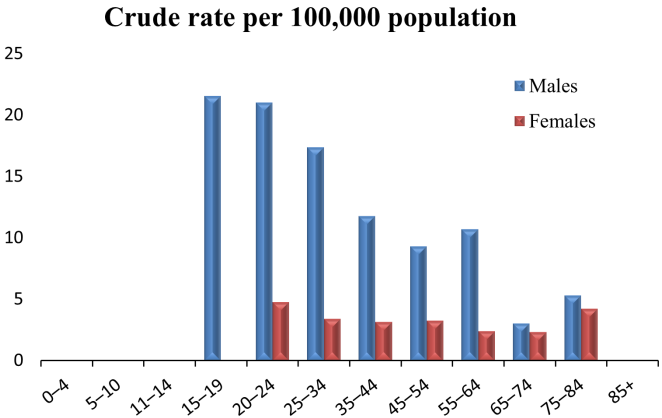


Intent	Count
Unintentional	808
Assault	242
Self-harm	41
Undetermined	26
Legal	5

Homicide and Assault by Age and Sex

Mortality Total: 294 (6.5)^ Males: 231 (10.3) Females: 63 (2.6)

INJURY COUNT

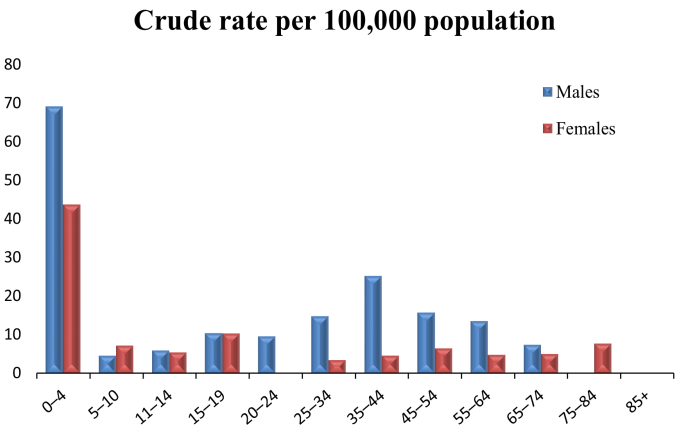


Age	Males	Females
0-4	*	*
5-10	0	*
11-14	*	0
15-19	33	*
20-24	33	7
25-34	54	10
35-44	34	9
45-54	26	9
55-64	30	7
65-74	7	6
75-84	6	6
85+	*	*

Inpatient Hospitalizations Total: 538 (9.6)

Males: 361 (13.3)

Females: 177 (5.8)

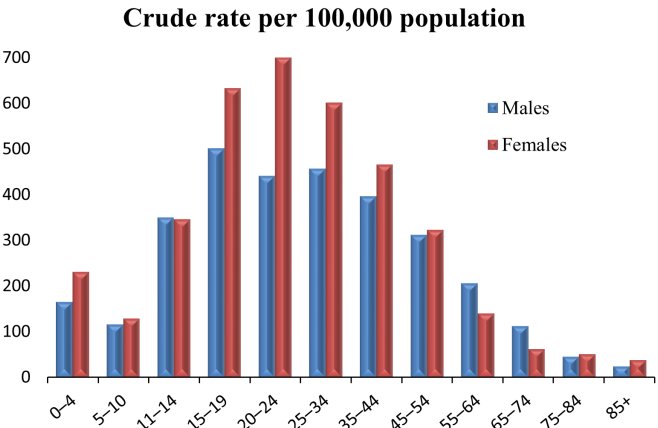


Age	Males	Females
0-4	94	57
5-10	8	12
11-14	7	6
15-19	16	15
20-24	15	*
25-34	46	10
35-44	73	13
45-54	44	18
55-64	38	14
65-74	17	13
75-84	*	11
85+	*	##

Emergency Department Visits Total: 14,186 (325.0)

Males: 6,636 (299.0)

Females: 7,550 (352.4)



Age	Males	Females
0-4	224	302
5-10	203	215
11-14	417	388
15-19	768	922
20-24	693	1,034
25-34	1,419	1,790
35-44	1,147	1,336
45-54	871	898
55-64	578	411
65-74	258	162
75-84	51	73
85+	7	19

^Age-adjusted rate per 100,000 population

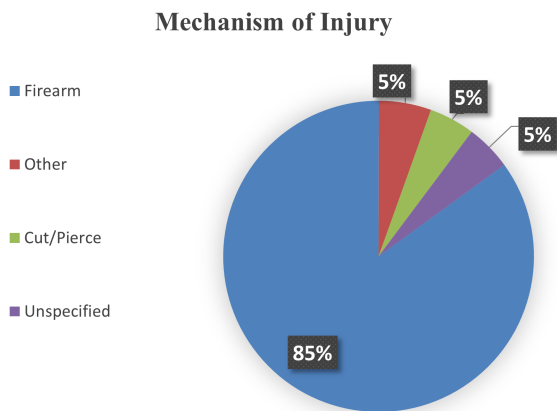
*Suppressed per state data policies

Rates based on counts of 20 or less may be unstable.



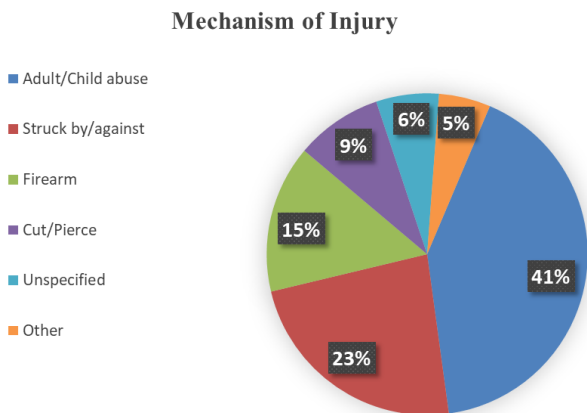
Homicide and Assault by Mechanism of Injury

Mortality



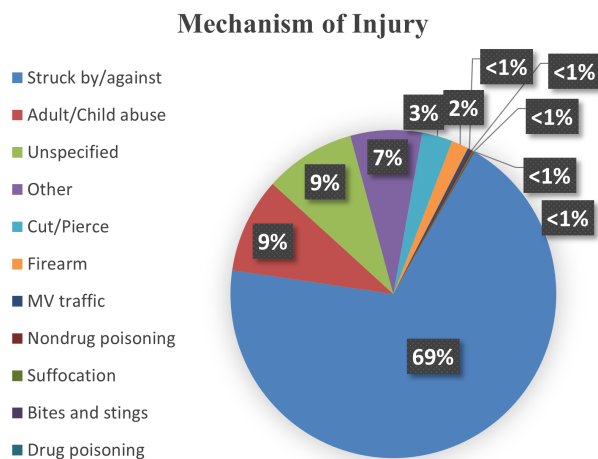
Mechanism of Injury	Count
Firearm	250
Other	16
Cut/Pierce	14
Unspecified	14

Inpatient Hospitalizations



Mechanism of Injury	Count
Adult/Child abuse	223
Struck by/against	126
Firearm	80
Cut/Pierce	47
Unspecified	34
Other	28

Emergency Department Visits

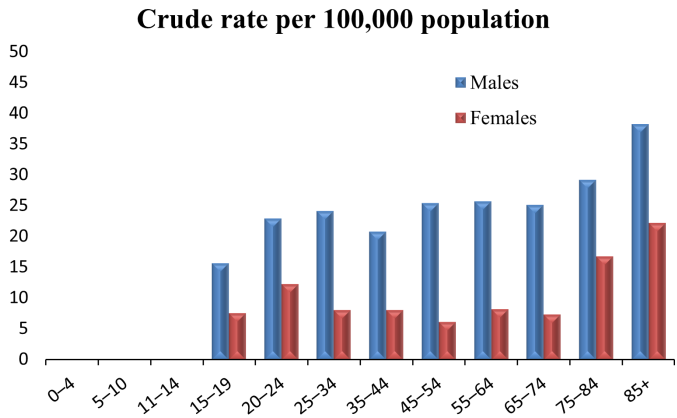


Mechanism of Injury	Count
Struck by/against	9,786
Adult/Child abuse	1,332
Unspecified	1,282
Other	1,008
Cut/Pierce	429
Firearm	242
MV traffic	43
Nondrug poisoning	30
Suffocation	18
Bites and stings	9
Drug poisoning	7

Unintentional MV Traffic Crashes by Age and Sex

Mortality Total: 627 (13.2)[^] Males: 449 (19.2) Females: 178 (7.3)

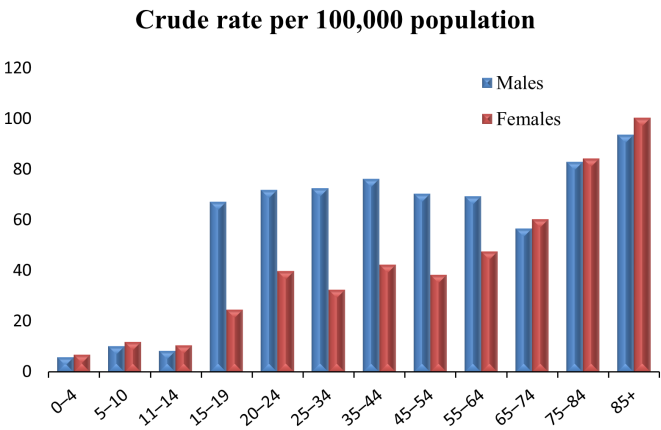
INJURY COUNT



Age	Males	Females
0-4	*	*
5-10	*	*
11-14	*	*
15-19	24	11
20-24	36	18
25-34	75	24
35-44	60	23
45-54	71	17
55-64	72	24
65-74	58	19
75-84	33	24
85+	11	11

Inpatient Hospitalizations Total: 2,273 (47.9)

Males: 1,343 (58.9) Females: 930 (36.8)

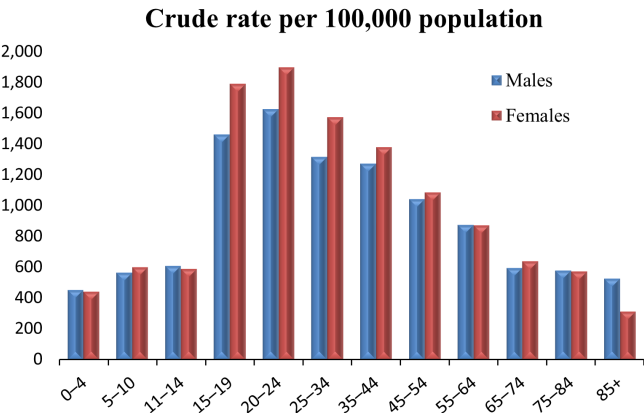


Age	Males	Females
0-4	8	9
5-10	18	20
11-14	10	12
15-19	103	36
20-24	113	59
25-34	226	97
35-44	221	122
45-54	197	107
55-64	195	140
65-74	131	157
75-84	94	121
85+	27	50

Emergency Department Visits Total: 47,012 (1,046.6)

Males: 22,473 (997.1)

Females: 24,539 (1,098.9)



Age	Males	Females
0-4	616	577
5-10	990	1,002
11-14	726	663
15-19	2,241	2,614
20-24	2,558	2,802
25-34	4,093	4,692
35-44	3,686	3,963
45-54	2,920	3,024
55-64	2,460	2,561
65-74	1,375	1,662
75-84	656	823
85+	152	156

[^]Age-adjusted rate per 100,000 population

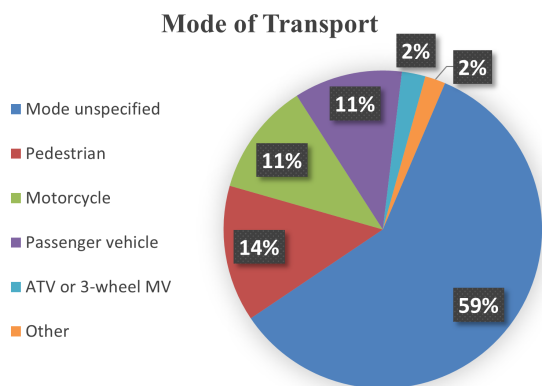
*Suppressed per state data policies

Rates based on counts of 20 or less may be unstable.



Unintentional MV Traffic Crashes by Mode and Person Type

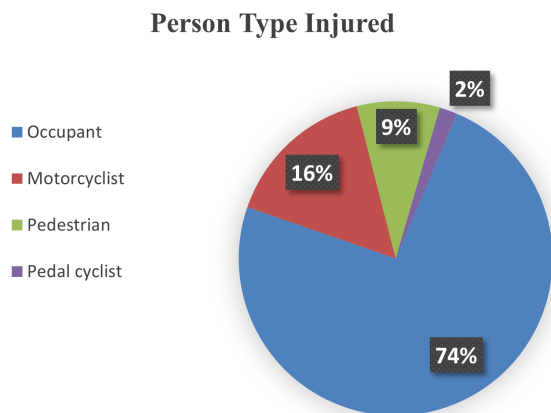
Mortality



Mode of Transport	Count
Mode unspecified	371
Pedestrian	87
Motorcycle	72
Passenger vehicle	69
ATV or 3-wheel MV	15
Other	13

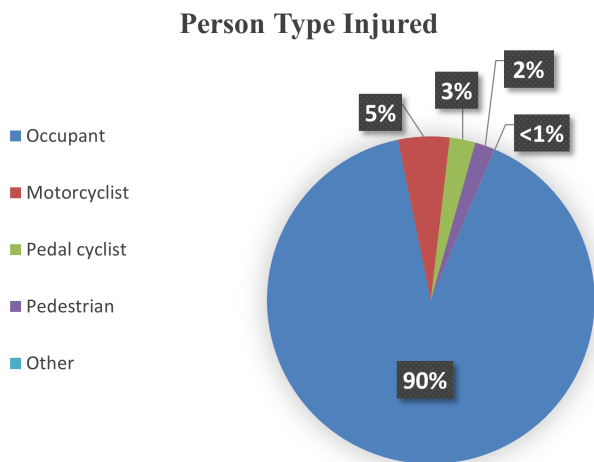
Note: "Other" includes persons whose mode of transport was a pedal cycle or a heavy transport vehicle.

Inpatient Hospitalizations



Person Type Injured	Count
Occupant	1,680
Motorcyclist	357
Pedestrian	194
Pedal cyclist	42

Emergency Department Visits

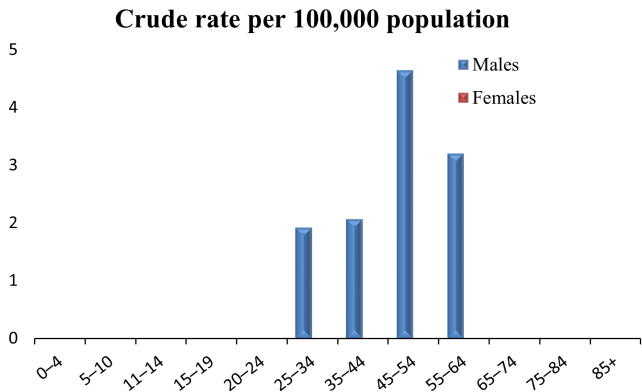


Person Type Injured	Count
Occupant	42,493
Motorcyclist	2,389
Pedal cyclist	1,190
Pedestrian	935
Other	5

Note: "Other" includes emergency department visits due to injuries related to persons boarding and alighting and unspecified occupants of a motor vehicle.

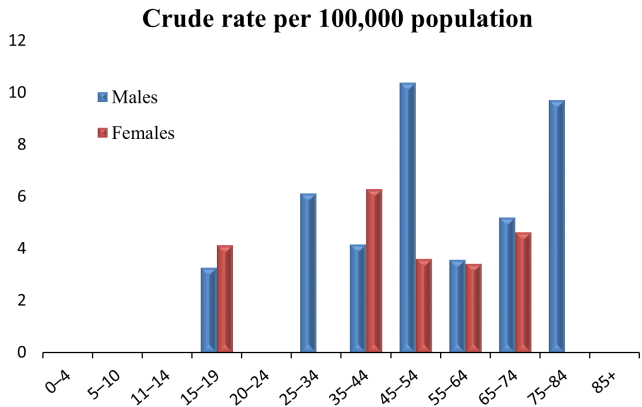
Nondrug Poisoning by Age and Sex

Mortality Total: 59 (1.2)[^] Males: 46 (2.0) Females: 13 (0.5)



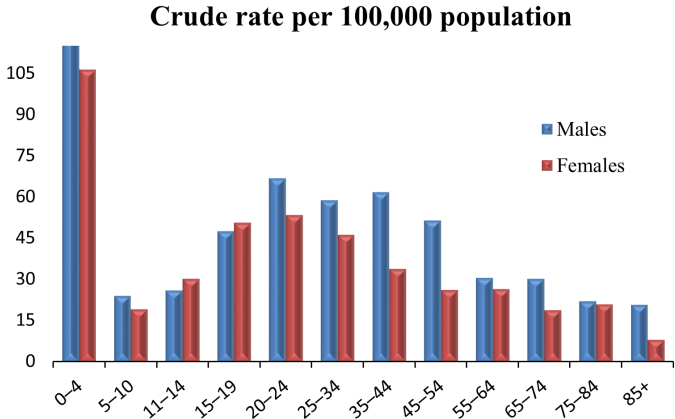
INJURY COUNT		
Age	Males	Females
0-4	0	0
5-10	0	0
11-14	0	0
15-19	*	0
20-24	*	*
25-34	6	*
35-44	6	*
45-54	13	0
55-64	9	*
65-74	*	*
75-84	*	*
85+	0	0

Inpatient Hospitalizations Total: 177 (3.8) Males: 103 (4.5) Females: 74 (3.1)



Age	Males	Females
0-4	*	*
5-10	*	*
11-14	0	*
15-19	5	6
20-24	*	*
25-34	19	*
35-44	12	18
45-54	29	10
55-64	10	10
65-74	12	12
75-84	11	*
85+	0	*

Emergency Department Visits Total: 1,944 (38.7) Males: 1,117 (44.9) Females: 827 (32.6)



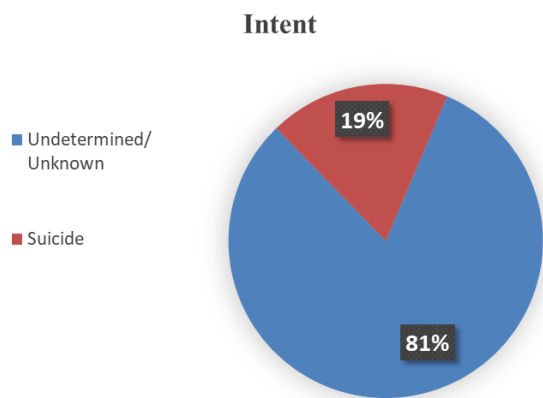
Age	Males	Females
0-4	173	139
5-10	42	32
11-14	31	34
15-19	73	74
20-24	105	79
25-34	183	138
35-44	179	97
45-54	144	73
55-64	86	78
65-74	70	49
75-84	25	##
85+	6	*

[^]Age-adjusted rate per 100,000 population
 *Suppressed per state data policies
 Rates based on counts of 20 or less may be unstable.



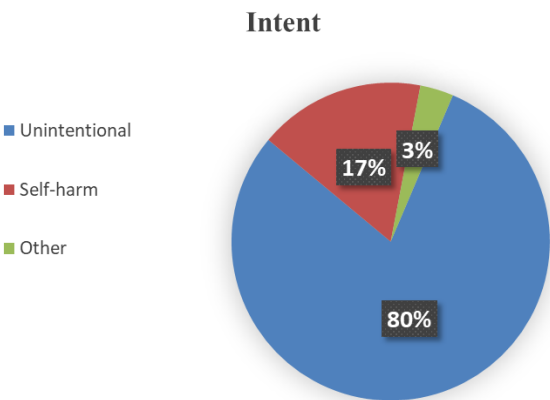
Nondrug Poisoning by Intent

Mortality



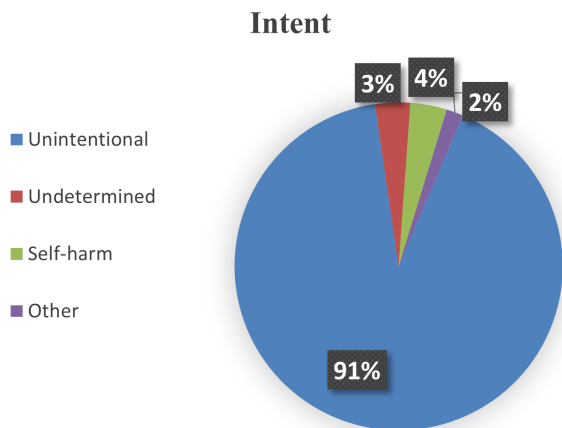
Intent	Count
Undetermined/ Unknown	48
Suicide	11

Inpatient Hospitalizations



Intent	Count
Unintentional	141
Self-harm	30
Other	6

Emergency Department Visits



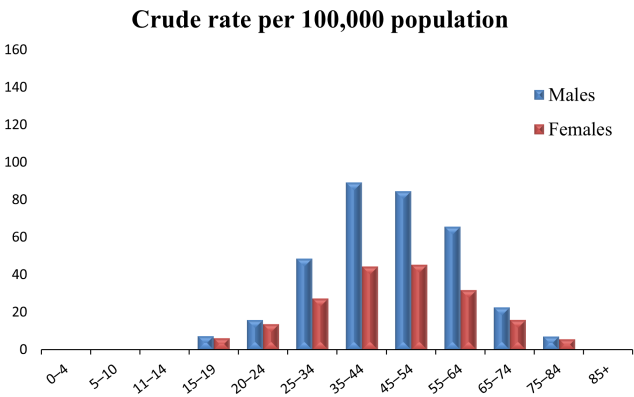
Intent	Count
Unintentional	1,775
Undetermined	70
Self-harm	67
Other	32

Note: “Other” includes emergency department visits due to assault and legal/war intents.

Drug Poisoning by Age and Sex

Mortality Total: 1,439 (32.5)^ Males: 929 (42.3) Females: 510 (22.7)

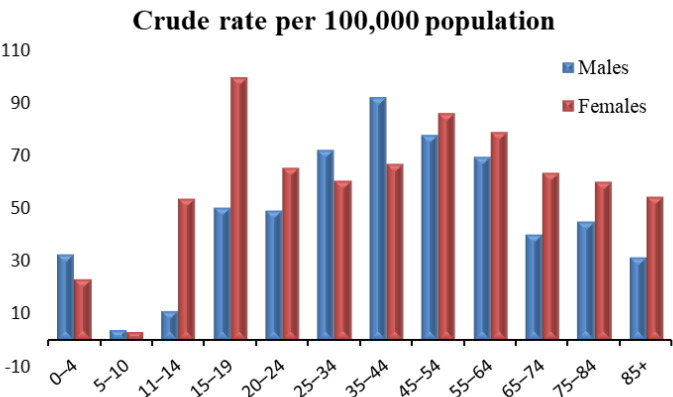
INJURY COUNT



Age	Males	Females
0-4	*	*
5-10	*	0
11-14	0	0
15-19	11	9
20-24	25	20
25-34	151	81
35-44	258	127
45-54	236	126
55-64	184	93
65-74	52	41
75-84	8	8
85+	*	*

Inpatient Hospitalizations Total: 2,727 (58.4)

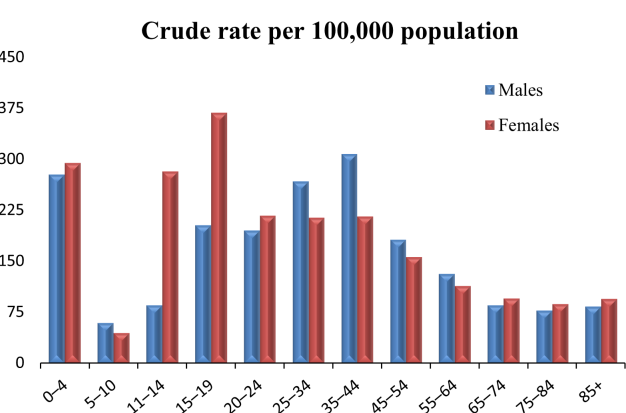
Males: 1,272 (55.5) Females: 1,455 (61.2)



Age	Males	Females
0-4	44	30
5-10	7	5
11-14	13	60
15-19	77	145
20-24	77	96
25-34	224	180
35-44	266	191
45-54	217	239
55-64	195	231
65-74	92	165
75-84	51	86
85+	9	27

Emergency Department Visits Total: 8,179 (175.6)

Males: 4,104 (176.9) Females: 4,075 (174.7)



Age	Males	Females
0-4	377	384
5-10	104	74
11-14	102	316
15-19	311	536
20-24	306	320
25-34	830	637
35-44	888	619
45-54	508	435
55-64	369	334
65-74	197	248
75-84	88	125
85+	24	47

^Age-adjusted rate per 100,000 population

*Suppressed per state data policies

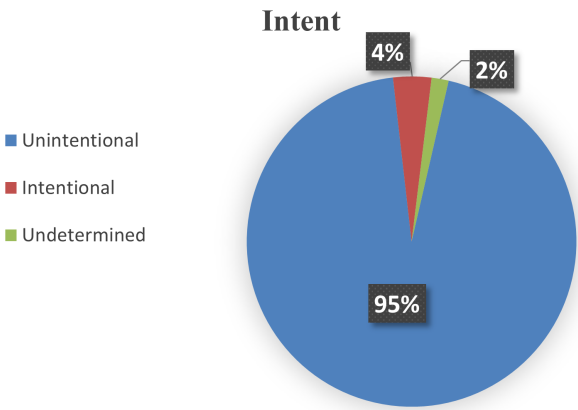
Rates based on counts of 20 or less may be unstable.

##Suppressed to prevent indirect disclosure



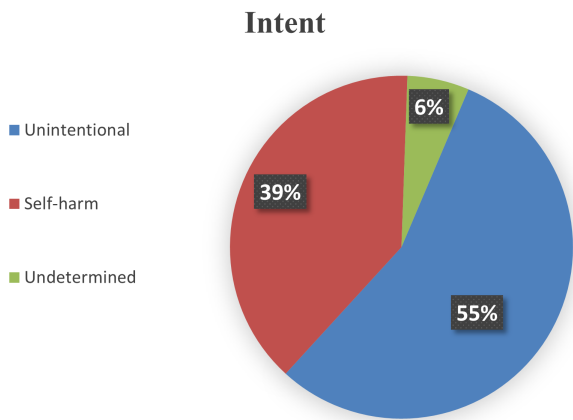
Drug Poisoning by Intent

Mortality

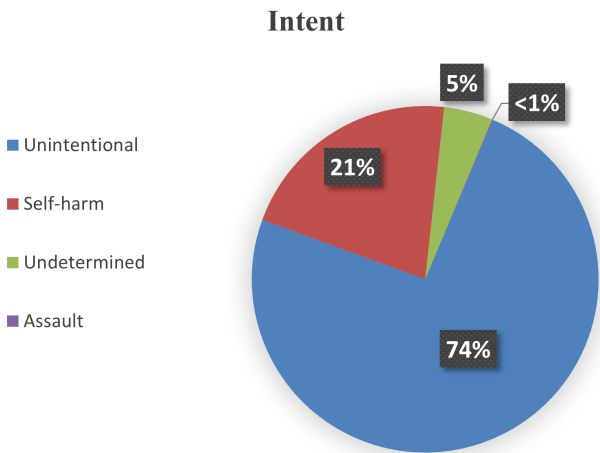


Intent	Count
Unintentional	1,361
Intentional	54
Undetermined	24

Inpatient Hospitalizations



Intent	Count
Unintentional	1,511
Self-harm	1,057
Undetermined	159

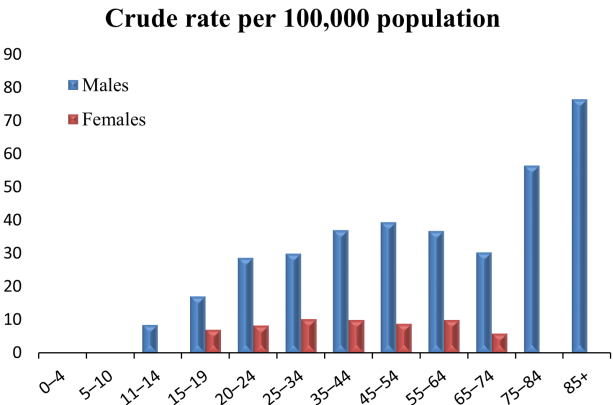


Emergency Department Visits

Intent	Count
Unintentional	6,068
Self-harm	1,732
Undetermined	372
Assault	7

Suicide and Self-Harm Injury by Age and Sex

Mortality Total: 809 (17.3)[^] Males: 650 (28.4) Females: 159 (6.9)

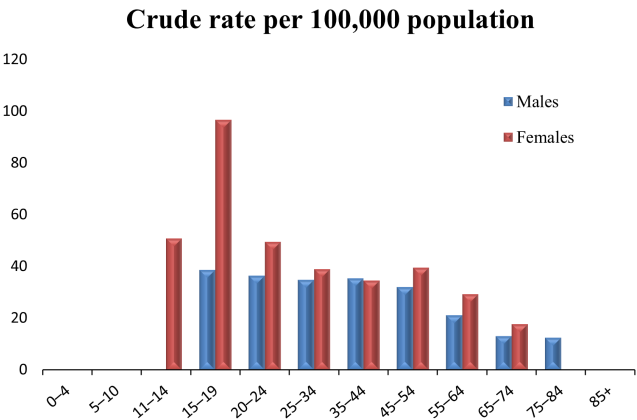


INJURY COUNT

Age	Males	Females
0-4		
5-10		
11-14	10	*
15-19	26	10
20-24	45	12
25-34	93	30
35-44	107	28
45-54	110	24
55-64	103	29
65-74	70	15
75-84	64	##
85+	22	0

Inpatient Hospitalizations¹ Total: 1,282 (29.2)

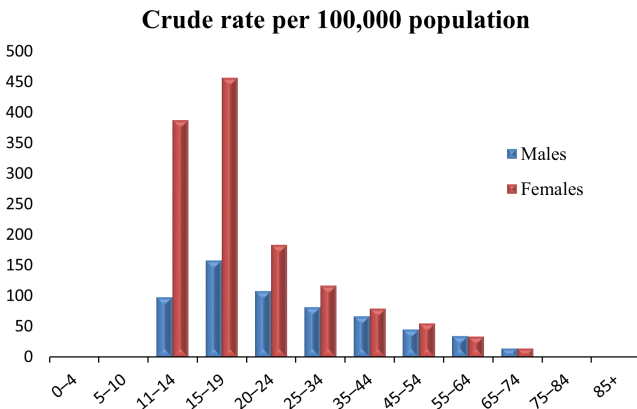
Males: 533 (24.3) Females: 749 (34.3)



Age	Males	Females
0-4		
5-10		
11-14	##	57
15-19	59	141
20-24	57	73
25-34	108	116
35-44	102	99
45-54	89	110
55-64	59	86
65-74	30	46
75-84	14	##
85+	*	*

Emergency Department Visits¹ Total: 3,490 (83.0)

Males: 1,240 (57.6) Females: 2,250 (109.9)



Age	Males	Females
0-4		
5-10		
11-14	116	435
15-19	241	666
20-24	169	271
25-34	253	348
35-44	192	227
45-54	125	154
55-64	96	98
65-74	32	37
75-84	##	##
85+	*	*

[^]Age-adjusted rate per 100,000 population

*Suppressed per state data policies

Rates based on counts of 20 or less may be unstable.

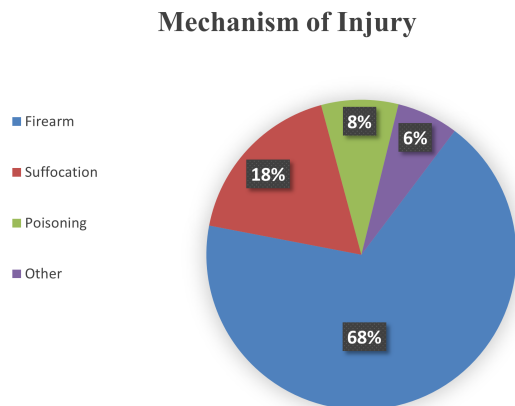
¹Data for persons aged <11 years are not shown.

##Suppressed to prevent indirect disclosure



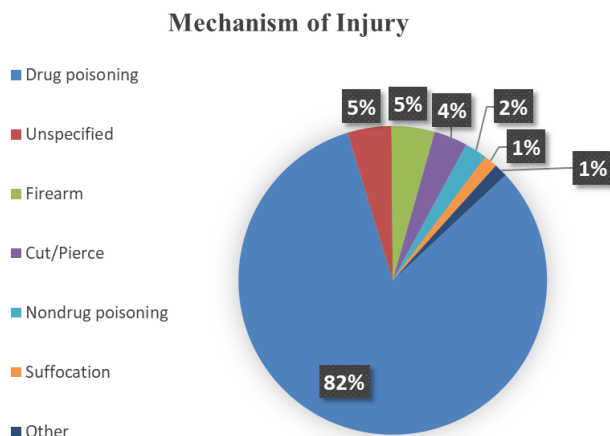
Suicide and Self-Harm Injury by Mechanism of Injury

Mortality



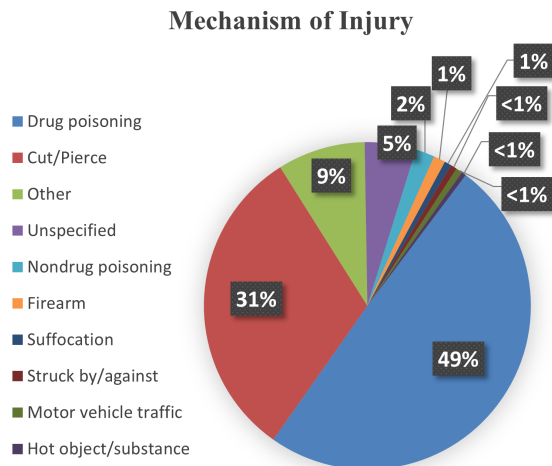
Mechanism of Injury	Count
Firearm	548
Suffocation	144
Poisoning	65
Other	52

Inpatient Hospitalizations



Mechanism of Injury	Count
Drug poisoning	1,054
Unspecified	59
Firearm	58
Cut/Pierce	45
Nondrug poisoning	30
Suffocation	18
Other	18

Emergency Department Visits

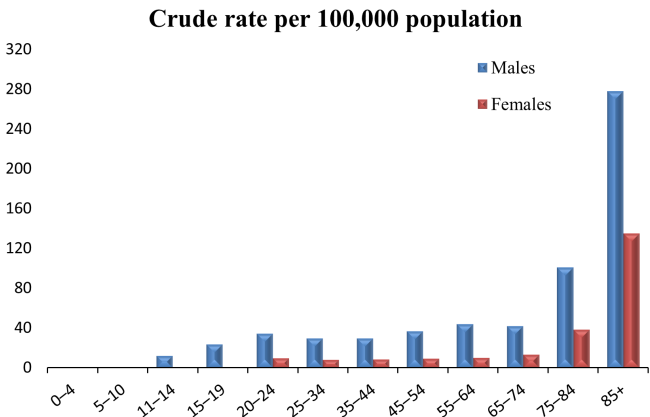


Mechanism of Injury	Count
Drug poisoning	1,727
Cut/Pierce	1,092
Other	303
Unspecified	177
Nondrug poisoning	66
Firearm	41
Suffocation	24
Struck by/against	22
Motor vehicle traffic	22
Hot object/substance	16

Traumatic Brain Injury by Age and Sex

Mortality Total: 1,085 (22.0)^ Males: 803 (34.6) Females: 282 (10.4)

INJURY COUNT

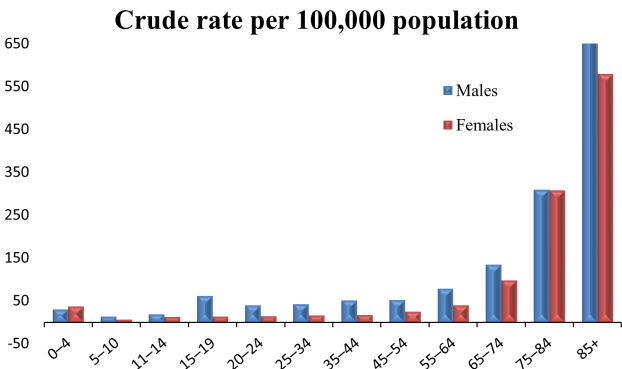


Age	Males	Females
0-4	##	*
5-10	*	*
11-14	14	0
15-19	36	*
20-24	54	14
25-34	91	24
35-44	85	24
45-54	102	25
55-64	123	29
65-74	97	34
75-84	114	55
85+	80	67

Inpatient Hospitalizations Total: 3,166 (59.8)

Males: 1,773 (74.1)

Females: 1,393 (46.2)

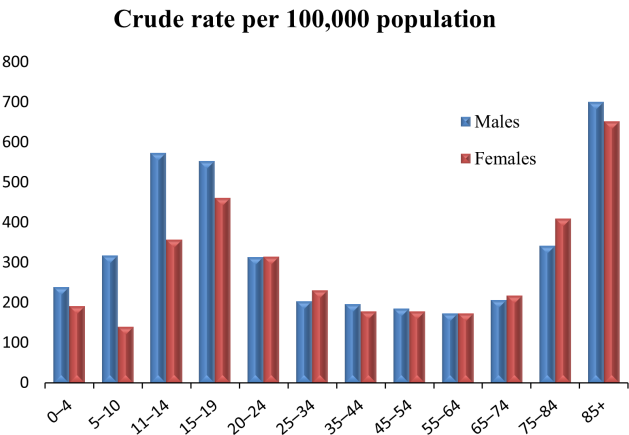


Age	Males	Females
0-4	42	49
5-10	25	12
11-14	23	15
15-19	96	20
20-24	63	22
25-34	135	49
35-44	150	51
45-54	148	70
55-64	222	119
65-74	312	256
75-84	351	442
85+	206	288

Emergency Department Visits Total: 11,891 (253.3)

Males: 6,184 (269.5)

Females: 5,707 (236.1)



Age	Males	Females
0-4	325	250
5-10	556	233
11-14	685	401
15-19	849	673
20-24	493	464
25-34	634	687
35-44	570	513
45-54	518	497
55-64	487	508
65-74	477	567
75-84	388	589
85+	202	325

^Age-adjusted rate per 100,000 population

*Suppressed per state data policies

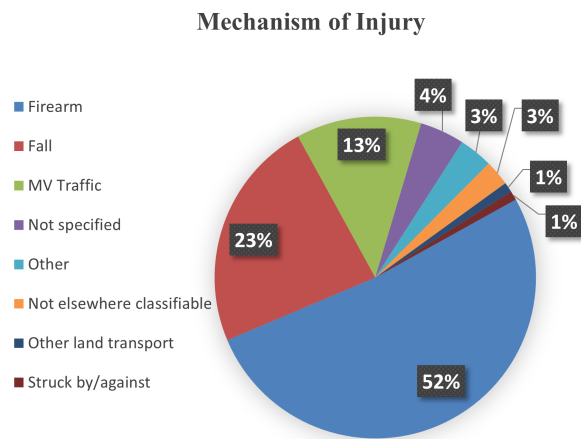
Rates based on counts of 20 or less may be unstable.

##Suppressed to prevent indirect disclosure



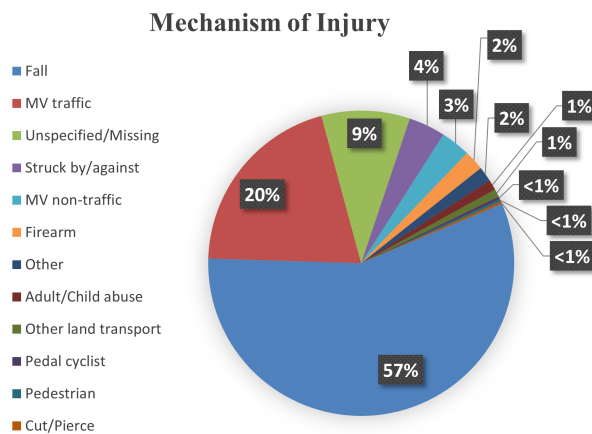
Traumatic Brain Injury by Mechanism of Injury

Mortality



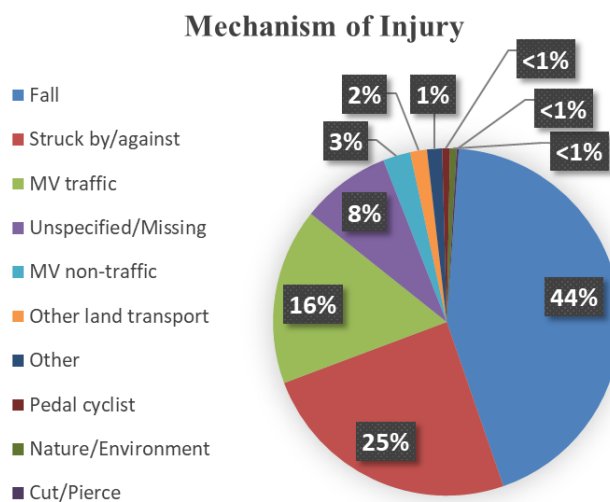
Mechanism of Injury	Count
Firearm	566
Fall	256
MV Traffic	138
Not specified	49
Other	37
Not elsewhere classifiable	28
Other land transport	11
Struck by/against	10

Inpatient Hospitalizations



Mechanism of Injury	Count
Fall	1,801
MV traffic	643
Unspecified/Missing	296
Struck by/against	123
MV non-traffic	99
Firearm	67
Other	50
Adult/Child abuse	35
Other land transport	26
Pedal cyclist	10
Pedestrian	8
Cut/Pierce	8

Emergency Department Visits



Mechanism of Injury	Count
Fall	5,185
Struck by/against	2,922
MV traffic	1,952
Unspecified/Missing	994
MV non-traffic	303
Other land transport	186
Other	166
Pedal cyclist	87
Nature/Environment	72
Cut/Pierce	24